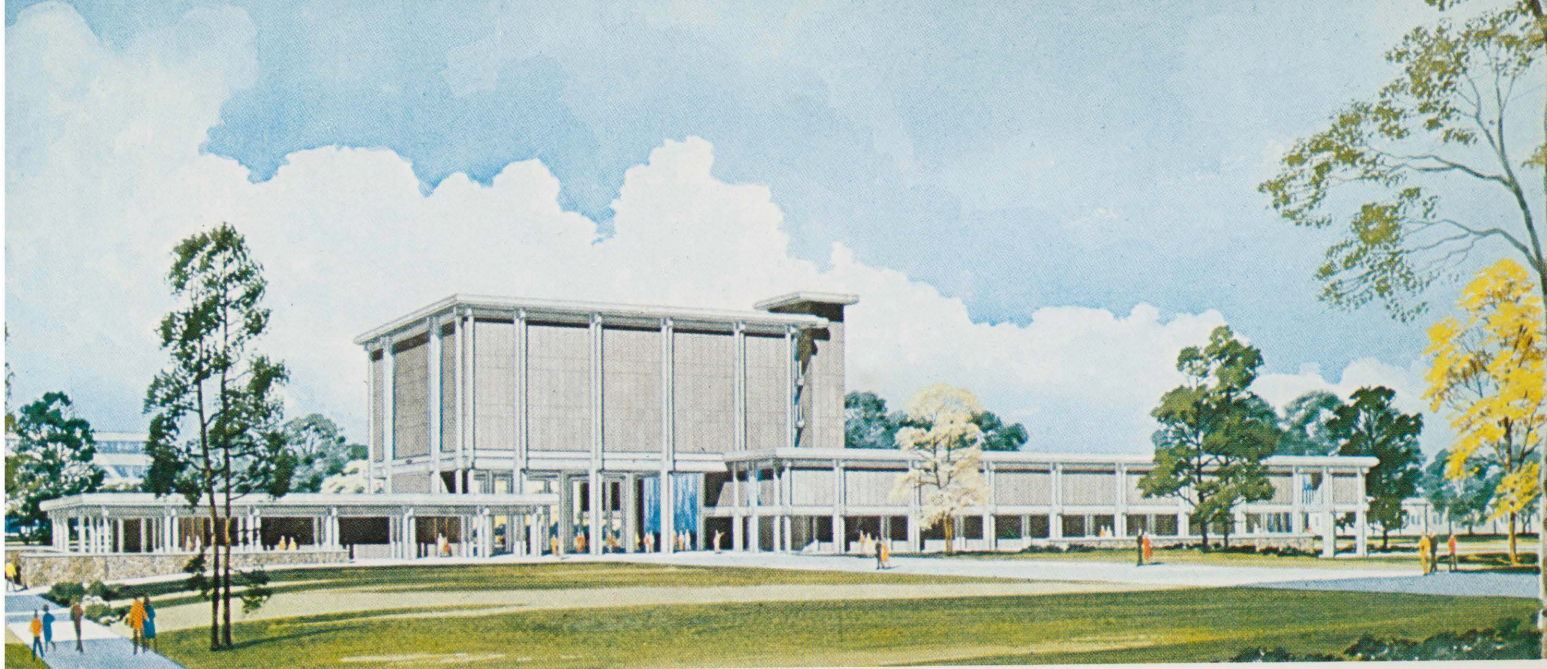


# COLORADO STATE COLLEGE BULLETIN

Summer School '67  
Greeley, Colorado



June 12 - August 18  
1967



### About the Cover:

Exciting things are happening on the Colorado State College West Campus. New buildings are shooting up almost overnight in a concentrated campaign to increase College facilities for the anticipated 1970 student body of 10,000.

Since last summer two more structures have gone under construction, bringing the total number of West Campus buildings to seven. Pictured above is the proposed \$2,850,000 Education Building. Scheduled to open fall quarter, 1968, the Education Building will feature a multi-purpose lecture complex and convertible classroom areas. Below is pictured the proposed \$3,274,000 residence hall, the third to be constructed on the West Campus. The thirteen-story structure will combine the concepts of high-rise construction and co-educational living. Men and women, residing on differ-

ent floors, will share four-room suites designed to accommodate four students comfortably. The residence hall is expected to be ready for use by fall quarter, 1967. Both of the new buildings will follow the architectural precedent set by the other West Campus facilities.

Inspired by the unique design of the West Campus College Center, Bob Waters, official CSC photographer, created the spectacular color photograph on the cover. The result of painstaking planning, this picture was exposed at night during a two-hour period. Using 4 x 5 Ektachrome film, Waters employed the help of two assistants to flash light on the building as well as set off more than 100 colored flash bulbs. The headlights of passing cars and a ten-second exposure of the Center's interior lights further emphasized the ethereal quality of the picture.



# Announcing Our 63rd Session

June 12 - August 18  
1967

It takes only one summer at Colorado State College to see why CSC is a favorite among summer school students and their families. Offering the unique advantage of study with relaxation and vacation, the College maintains a complete academic and extra-curricular program on campus, while community activities and the proximity of the Rocky Mountains provide off-campus recreational diversions.

Visitors to CSC will enjoy the abundance of fresh and progressive educational ideas. Colorado State College encompasses more than 85 buildings on four campuses, with some 20 academic and residence structures in the planning or construction stages. Its enrollment figures average 5,400 summer quarter students, and 7,500 for the regular academic year. The administration and faculty, considered among the most qualified in the nation, average 317 full-time equivalent instructors.

With teacher education still a primary purpose, CSC has also developed progressive programs in the arts and sciences, and in the applied and professional fields in order to meet current educational demands. The College is accredited in seven degree programs, ranging from the bachelor to the doctorate degrees and including a four-year degree program in nursing.

Academically, the entire family may profit from a summer at CSC. Adults will be able to select from the more than 800 courses, workshops and seminars to be offered at the graduate and undergraduate levels. Their instructors will include nationally known guests as well as members of CSC's outstanding regular faculty, and many course formats will include informal discussions, allowing more fully for the cross-communication of ideas.

Provisions may be made for the summer education of the youngsters. On campus, morning classes are scheduled in the Laboratory School (Kindergarten, grades one through six), and in the Special Education School. Although no classes will be conducted in the secondary school on the campus, summer sessions are planned for grades two through twelve in Greeley School District No. 6. Further information concerning these programs may be obtained from Director, Laboratory School, CSC; or Director, Special Education School, CSC 80631. Requested information on the School District No. 6 summer school

program will be furnished by Assistant Principal, Greeley Central High School, Greeley, Colorado 80631. Information on the Nursery School conducted by the College may be obtained from the Home Economics Department, CSC 80631.

Among the more prominent facilities at CSC is the library in Carter Hall, which features air-conditioned stacks and forced air cooling throughout for summer comfort. Maintaining more than 222,500 volumes, microfilms and periodicals, the library also offers several copying services.

The Instructional Materials Center, now located in Cranford Hall, has more than 1,960 films, 950 filmstrips, and several hundred recordings, while the Bureau of Research Services, also in Cranford, offers consultative services to doctoral students in their degree work.

Special study and meeting rooms, student activities offices, and other eating and recreation facilities are outstanding features of the College Center on West Campus. Bru Inn, situated in the west end of Gunter Annex on Central Campus, offers automated snack bar facilities, while the Graduate Center includes snack bar, lounges and study/typing rooms for graduate student use.

## TABLE OF CONTENTS

	PAGE
General Introduction .....	1
Speakers from Around the Nation .....	2
Study-Travel Courses .....	4
Undergraduate Programs .....	5
Graduate Programs .....	6
After Hours .....	7
Admissions Policy .....	8
Housing Information .....	9
Tuition, Fees .....	10
The Administration .....	11
Summer Faculty .....	11
Registration .....	13
Summer Quarter Calendar .....	14
Final Exam Schedule .....	14
Schedule of Classes .....	14

Entered as second class matter at the post office at Greeley, Colorado, under the act of August 24, 1912. Bulletin Series LXVII, No. 3, December, 1966. Published monthly.

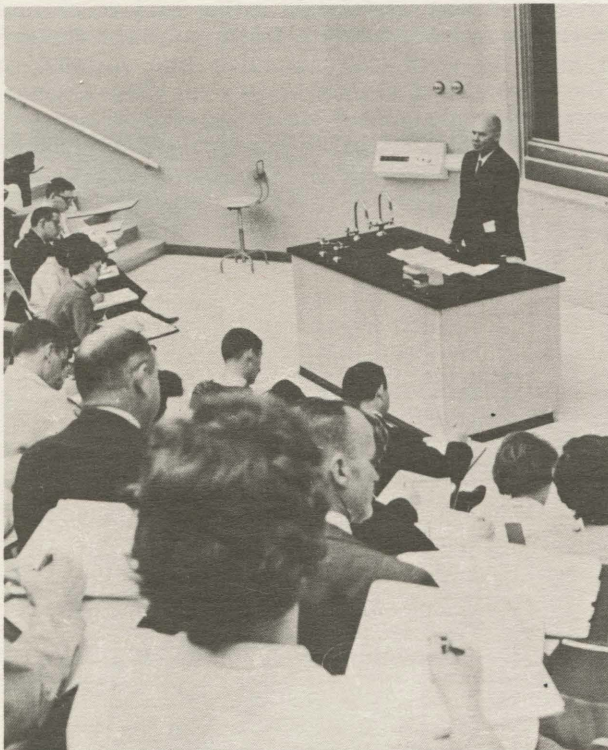
# From Around The Nation

Well-known personalities from around the nation will visit the Colorado State College campus this summer to take part in a number of special assemblies and workshops. Headlining the list of scheduled events will be the annual Monday Night Assembly Series with five featured guests, each a recognized authority in his field.

## **RACE RELATIONS**      **Monday, June 19, 1967**

**The Honorable Carl T. Rowan**, a syndicated columnist and former Director of the U.S. Information Agency, will open the four-week Monday night lecture series. Speaking on "New Frontiers in Race Relations," Mr. Rowan will discuss such movements as sit-ins, wade-ins, kneel-ins and voting rights bills.

Mr. Rowan served as Deputy Assistant to the Secretary of State for Public Affairs and as Ambassador to Finland under the late President John Kennedy. In 1964, President Lyndon Johnson appointed him Director of the United States Information Agency. A syndicated columnist since 1965, Mr. Rowan is author of four books: *Go South to Sorrow*, *Wait Till Next Year*, *South of Freedom* and *The Pitiful and The Proud*.



Tiered lecture halls are a highlight of Ross Hall of Science on the West Campus.

## **POLITICS**

**June 26, 1967**

Considered one of the best storytellers in the Capitol, and a humorist in the vein of Will Rogers, **The Honorable Brooks Hays** will lecture on "Peaks and Pitfalls of Politics" in the second of four summer assemblies.

Mr. Hays was born near Russelville, Arkansas in 1898 and has since maintained close ties with his home state. He received the A.B. degree from the University of Arkansas and was awarded the LL.B. degree from George Washington University Law School. He has been the recipient of 11 honorary degrees of Doctor of Law, as well as the honorary degrees of Doctor of Humanities and Doctor of Divinity.

Having made a career of politics, Mr. Hays served as Congressman for the State of Arkansas for 8 terms (1942-1958), and still maintains a permanent office in the White House. In addition to serving on the Committee of Foreign Affairs since 1951, and on the Committee on Banking and Currency for eight years, Mr. Hays has served in the capacity of consultant to three U.S. Presidents.

## **LITERATURE**

**Monday, July 17, 1967**

"Contemporary Poets in a Changing Landscape" will be discussed by **Miss Carolyn Kizer**, founder and editor of the "Poetry Northwest" magazine and a noted American poet. In her lecture, Miss Kizer will discuss the styles and meanings of contemporary poetry, and will include the works of various modern poets as illustration.

Miss Kizer, who has been publishing poetry since she was 17, was appointed the first director of the literary program for the National Council on the Arts in Washington in early 1966. She has traveled in England and throughout the United States discussing poets and poetry at various universities and symposiums. During 1964-65, she was a poet-in-residence in Pakistan, where she lectured at universities and studied the contemporary Urdu and Bengali poetry.

## **MUSIC AND DANCE**

**Monday, July 24, 1967**

**Mr. Walter Terry** and **Mr. James Clouser** will conclude the Monday night programs with a lecture demonstration on music. Mr. Terry is a dance critic with the "New York Herald Tribune" and a consultant to the State Department on the Cultural Exchange Programs. A ballet master with the Royal Winnipeg Ballet of Manitoba Province, Canada, Mr. Clouser is noted as a choreographer, composer and concert pianist as well as a speaker on dance.



ROWAN



HAYS



KIZER



TERRY

**MATHEMATICS July 31-August 11**

Miss Lola J. May, Mathematics Consultant for the Winnetka, Wisconsin Public Schools, will appear on the CSC campus to conduct the Elementary Mathematics Workshop (MATH 278; see Schedule of Classes).

A nationally known figure in the realm of Mathematics, Miss May received her B.S. degree from the University of Wisconsin, the M.A. degree from Northwestern University and was awarded the Ph.D. in 1964 at Northwestern. She has taught at all school levels including colleges, and is in great demand as a workshop speaker.

Miss May is the author of the book, **Modern Concepts of Elementary Modern Math**, and has authored or co-authored articles in the "Chicago Tribune" and "Grade Teacher Magazine." She last appeared at CSC as a participant in the Greeley Meeting of National Council of Teachers of Mathematics in April, 1966.

**PHYSICAL EDUCATION and SPECIAL EDUCATION July 17-28**

Traveling to CSC for the purpose of conducting a workshop in Physical Education for the Mentally Retarded (HPER 200; see Schedule of Classes) will be Dr. Julian U. Stein and Mr. Ernie Davis.

Dr. Stein is presently Director of the Project on Recreation and Fitness of the American Association for Health, Physical Education and Recreation (AAHPER). Having served as Assistant Professor of Physical Education at the University of Rhode Island, Dr. Stein has spent a number of years in the development of physical education programs for the mentally retarded.

Mr. Davis is presently Physical Education Specialist for Crowley Special School in the St. Paul, Minnesota public school system. A leading practitioner in teaching physical education to the mentally retarded, Mr. Davis is also a member of the AAHPER Task Force on Programs for the Mentally Retarded.

**PROFESSIONAL NEGOTIATIONS IN PUBLIC EDUCATION June 12-16**

One of three colleges in the United States selected to conduct an Institute on Professional

Negotiations in Public Education, CSC will play host to a number of the country's leading educators, legislators and business personalities.

The non-credit institute, to be jointly sponsored by Alpha Mu Chapter, Phi Delta Kappa, CSC, and National Office, Phi Delta Kappa, Bloomington, Indiana, will require a registration fee of \$125. This fee will include all lectures, one social hour and buffet dinner, one luncheon, a textbook and other resource materials. Although participation will be generally limited to registered persons, some general sessions will be open to CSC summer students at a charge of \$2.00 per lecture.

The curriculum will deal intensively with the existing situation, imminent changes, and long-range developments in the area of collective negotiations in public education. Participants will have an opportunity to analyze existing collective agreements, organizational policies, state legislation and other basic policies with the educational, administrative, organizational and legislative leaders responsible for developing and/or implementing them.

Visiting speakers will include Dr. Myron Lieberman, Director of Educational Research and Development, Rhode Island College; Dr. Michael H. Moskow, Assistant Professor of Management, Drexel Institute of Technology; Dr. William Elena, Associate Executive Secretary, American Association of School Administrators; Herrick Roth, Director of Colorado, AFL-CIO; and Kenneth Jonson, Regional Director, National Education Association.

Co-Directors of the conference are Dr. Stanley Elam, Phi Delta Kappa publications, and Dr. Bruce Broderius of Colorado State College. For further information, please write to Dr. Broderius.

**Little Theatre of the Rockies**

Six outstanding dramatic presentations will be offered this year by the Little Theatre of the Rockies, one of the first college summer theatres in the West. Each of the 1967 dramatic productions will be staged two nights, Thursday and Friday, at 8:00 p.m. Season tickets for the six productions may be purchased after June 1, 1967.

# Study-Travel Courses

The dual opportunities of study and travel are again available to CSC summer students this year. Three study-travel plans with destinations in Europe and Russia; Washington, D.C. and New York City; and Greece are being offered for academic credit.

## **SS 221 Cultural Background of Western-Soviet Russian Relations June 14-August 15 (Fifteen hours credit in social sciences)**

Offered in cooperation with the Institute of European Studies, a non-profit organization, this course offers the opportunity for international education by comparing political, economic and social life of the West with that of the Soviet Union. A survey of fine art in Western and Eastern Europe will be included.

Students first attend 31 days of on-campus study in the history of Western-Soviet Russian relations and art under Professors Arnold and Ellinger.

Upon completion of on-campus study, the class will embark on a 28-day tour of Europe via jet from Denver. Cities included in the tour are London, Amsterdam, Brussels, Paris, Berlin, Warsaw, Moscow, Leningrad and Helsinki. Professors of universities and officials of international agencies throughout Europe and the Soviet Union will lecture to students. A European tour conductor of the Institute of European Studies will accompany the tour throughout Europe.

The credit may be applied toward a formal degree program on either the graduate or undergraduate level with prior approval of the academic adviser.

Tour cost of \$1,225 from Greeley to Greeley includes air transportation, hotels, meals and other necessary expenses. Travel to and from Europe will be by jet group flight rate. Included is air transportation to eight cities during the tour. Cost is based on current rates and is subject to change until April 1, 1967. Tuition and living expenses on campus are additional.



A major point of interest to students enrolled in the European-Soviet Russian study-tour this year will be The Kremlin.

—Photo courtesy of Novosti Press Agency

Dr. Dean A. Arnold is tour director. Please contact Dr. Arnold or the Dean of the Graduate Division for additional information. All applications must be submitted no later than April 1, 1967.

## **HUM 220 Greek Culture June 14-August 15 (Fifteen hours credit in the humanities)**

This course offers an intensive study of Greek culture with 30 days in Greece following a five-week study period on campus. The campus study will involve a reading of Greek literature, history, philosophy, art and mythology. Professors Cross, Harrison and others will conduct these studies.

On July 17, the group will fly by jet aircraft to Athens. Here the group will reside in comfortable living quarters while attending lectures and visiting important sites in Greece. A careful study will be made of the buildings on the Acropolis and the Agora. A three-day trip will be made to the Oracle of Apollo at Delphi; a six-day tour will be arranged to visit Agamemnon's palace at Mycenae, Corinth, and Olympia; and a three-day trip will be made to the island of Crete to visit the remains of the great Cretan culture in the Palaces Knossos, Phaestos, and Mallia. In all these places directors of museums and other experts will guide the group through lectures and tours. The group will return to Denver on August 15. Dr. Neal Cross will conduct the group.

Anticipated expenses of this study-tour will be approximately \$1,225 plus tuition and room and board while on campus. All inquiries should be directed to Dr. Neal Cross, English Department, CSC.

## **USH 272 Contemporary American Foreign Policy June 3-13 (Three hours credit)**

In Washington, D.C., members of the class will hear lectures at the State Department and observe the Foreign Relations Committees of both houses. Also scheduled are a trip to the National Archives where the class will examine major historical documents and an optional tour of the Arlington National Cemetery and Mount Vernon.

In New York, participants will tour the United Nations Building, be briefed on America's role in the world organization and attend U.N. meetings if any are in session.

Total cost of this course will be about \$245 plus tuition, to be paid as follows: \$25 in advance reservation deposit before May 1 and the remainder before May 15. Students will not need housing in Greeley because the class departs by train on registration day (June 3) and returns on June 13.

The course may be taken either as a single three-hour course or as three hours of a student's program for the summer quarter. For further information, contact Dr. Stephen Powers, History Department, CSC.

# Undergraduate Programs

## Baccalaureate Degrees

The School of Arts and Sciences, the School of Education, and six academic divisions offer a total of 53 majors in three academic programs: Arts and Sciences, Teaching Professions (Teacher Education), and Applied and Professional Studies. Three undergraduate degrees are available: Bachelor of Arts, Bachelor of Science, and Bachelor of Music.

Thirty majors are offered in the Teaching Profession program by 34 academic departments. Admission to the Teaching Professions program does not guarantee teacher certification; prior to their junior year, students pursuing a teacher profession major must apply for admission in the Advanced Teacher Education Program. If admitted, the student enrolls in a block of advanced teacher education courses including basic concepts of education, educational psychology, student teaching and educational philosophy. Successful completion of the program will result in certification of the prospective teacher to teach in Colorado and many other states in the nation.

Colorado State College also serves as a regional institution in offering a strong program in the Arts and Sciences, Pre-Professional courses, and selected Applied and Professional Studies programs. Sixteen majors are offered in the Arts and Sciences program, while seven majors are available in the Applied and Professional Studies program. Course work is offered in the fields of pre-dentistry, pre-medicine, pre-law and pre-engineering. Undergraduate male students may also participate in the Aerospace Studies program which, if successfully completed, leads to a commission in the U.S. Air Force Reserves.

## Summer Quarter Plan

The Summer Quarter plan allows the undergraduate student to attend college on a four-quarter basis. If this plan is followed from the freshman year, the student, through continuous study, may complete his undergraduate requirements for graduation in three years. If academic requirements are met, the student is then eligible to apply for a position and earn an extra year's salary or to work on a master's degree during the fourth year which is normally devoted to undergraduate study.

### MAJORS

#### SCHOOL OF ARTS AND SCIENCES

Biological Science (Concentration in Botany or Zoology)  
Chemistry  
Earth Science  
Elementary Science  
English  
English (Junior High School Level)  
French  
German  
History  
Junior High Science  
Mathematics  
Medical Technology  
Physics  
Physical Science  
Pre-Professional Curriculums  
Pre-Dentistry  
Pre-Engineering  
Pre-Law  
Pre-Medicine  
Social Science  
Social Studies (Junior High School Level)  
Spanish  
Speech  
Theatre Arts

#### SCHOOL OF EDUCATION

Elementary Education  
Special Education (Concentration in Mental Retardation, Acoustically Handicapped, Speech Correction, Audiology)

#### DIVISIONS

##### Arts

Dietetics  
Fine Arts  
Fine Arts (Junior High School Level)  
Home Economics  
Industrial Arts

##### Business

Business (Specialization in Accounting, Finance, Management or Marketing)  
Business Education (Specialization in Accounting, Basic Business or Economics, Distributive Education or Secretarial)  
Secretarial (Two-year, non-degree program)

##### Health, Physical Education and Recreation

Physical Education for Men  
Physical Education for Women  
Physical Education for Elementary Education Majors (Men or Women)

##### Music

Music  
Music Education (Instrumental, Vocal or General Emphasis)

##### Nursing

## Minor Programs

In addition to the programs listed above, the college offers a number of programs as minors (27 quarter hours). Most major programs are also offered as minor programs. The program in psychology is offered as a minor only. Please consult the general catalog for specific information.

# Graduate Programs

Through the Graduate Division, Colorado State College offers four advanced degree programs leading to the Master of Arts (M.A.), Specialist in Education (Ed.S.), Doctor of Education (Ed.D.) and Doctor of Philosophy (Ph.D.).

Detailed information concerning advanced degrees may be obtained by consulting the 1966-67 General Catalog or by writing to the Dean of the Graduate Division, CSC 80631.

## Master of Arts

The Master of Arts degree may be earned in three consecutive summer quarters of full-time study. The master's degree is awarded upon completion of a minimum of 45 quarter hours of credit. Probationary students are required to complete a 60 quarter hour program. Candidates must be on campus, enrolled as full-time students for two quarters (10 quarter hours per quarter), to satisfy the minimum residence requirement.

### Arts

- Fine Arts
- Home Economics
- Industrial Arts

### Business

- Business Education

### Health, Physical Education and Recreation

- Dance Education
- Health Education
- Physical Education
- Recreation
- \*Supervision of Physical Education

### Music

- Applied Music and Performance
- Music Education
- \*Supervision of Music

### Humanities

- English
- Speech and Drama

### Sciences

- Biological Science
- \*\*Botany
- \*\*Chemistry
- Mathematics
- Physical Science
- \*\*Physics
- Science Education
- \*\*Zoology

### Social Science

- History
- Social Science

### Education

- Audio-Visual Education
- \*Educational Administration: Elementary
- \*Educational Administration: Junior High School
- \*Educational Administration: Secondary
- Elementary Education: Content
- Elementary Education: Developmental Reading
- Elementary Education: Remedial Reading
- Junior High School Curriculum and Instruction
- \*Psychology, Counseling and Guidance
- Reading
- Secondary Education: Curriculum and Instruction

### Special Education

- Acoustically Handicapped
- Audiology
- Emotionally Disturbed
- Mentally Retarded
- Physically Handicapped
- Speech Correction
- Visually Handicapped
- Vocational Rehabilitation Counseling (two-year program)

\*These majors require two years of actual teaching experiences as a prerequisite.

\*\*Master's thesis required.

## Specialist in Education

The Specialist in Education degree is a one-year program beyond the master's degree, assuming that the area of specialization is compatible with the undergraduate and Master of Arts major. This program prepares one to be what the name implies — a specialist — and course work generally cuts across divisional and departmental lines. A student may wish to specialize in areas similar to the following topics: Supervision of Science Instruction, Consultant in School Buildings, Testing in the Elementary School or Guidance in the Elementary School. Programs in Counseling, Educational Administration, School Psychology and Vocational Rehabilitation Counseling are partially or fully prescribed in order to meet certification requirements.

## Doctor of Education

A two-year program beyond the master's degree, the Doctor of Education degree requires course work and research of a professional nature. The student selects an area of concentration (major) and a supporting area (minor). All candidates are required to spend three consecutive quarters in residence in full-time study. A student must earn a minimum of 72 quarter hours of credit in his combined concentration and supporting areas and pass comprehensive examinations on these areas. In addition, he must write and defend an acceptable dissertation for which a maximum of 18 quarter hours of credit are granted.

The degree of Doctor of Education is offered in the following areas of concentration: Business Education; Educational Administration; Elementary Education; English; English Education; Health and Physical Education; Industrial Arts Education; Mathematics Education; Mathematics; Music Education; Psychology, Counseling and Guidance; Reading; Science Education (Botany, Chemistry, Physics, Zoology); Secondary Curriculum and Instruction (in content area); Social Science; Special Education (Administration, Mental Retardation, Visually Handicapped, Vocational Rehabilitation).

Students may select any one of the above fields for their minor course of study or one of the following: Audio-Visual Education; Curriculum; Higher Education; History and Philosophy of Education.

## Doctor of Philosophy

The Doctor of Philosophy degree is a three-year program beyond the baccalaureate. Two specialized programs are available: (1) College Student Personnel Work to prepare candidates for college placement as deans of students and in other related areas; and (2) Educational Measurements and Research designed to prepare candidates for college teaching assignments and/or researchers for curricular areas.



## Alumni Picnic

On Sunday, June 18, the Alumni Association of CSC will sponsor its first annual Summer Picnic at Estes Park Municipal Park. Summer students, faculty and alumni from around the nation are invited to attend. Games and activities will be provided for the young people, allowing Mom and Dad to relax for the day. The Association will provide soft drinks and ice cream for everyone.

## Intramural Sports

The Division of Health, Physical Education and Recreation maintains a spirited intramural sports program during the Summer Quarter. Open to CSC students, the possibilities include softball tournaments with teams usually derived of and named after various states, mixed golf tournaments and bowling leagues.

## Concerts

Band concerts, featuring varied selections will be presented by the Music Division each Tuesday night in the Garden Theatre. Choral and orchestral concerts as well as student and faculty recitals are scheduled throughout the quarter and are also open to the public.

## Book Reviews

For the 43rd consecutive year, members of the CSC faculty will present a series of 16 book reviews, ranging from biographies, to novels, to resource books. Review meetings convene at 4:00 p.m. Monday through Thursday for four weeks beginning July 10.

## Family Fun Night

Perhaps the most popular all-around Summer Quarter activity is Family Fun Night, sponsored by the Division of Health, Physical Education and Recreation each Wednesday night.

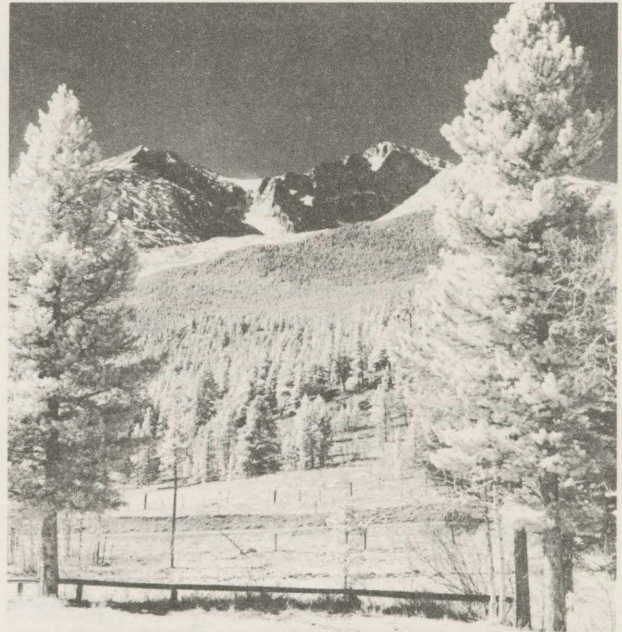
Beginning at approximately 7:00 p.m., members of the CSC recreation courses supervise a variety of activities for all age groups. Included in the evenings' diversions are organized relays and circle games, supervised swimming, indoor sports (badminton, volleyball, etc.), square dancing for all ages on the tennis courts, and recent full-length movies.

## Graduate Dames

A social organization for wives of graduate men, Graduate Dames meets at 1:30 p.m. every Wednesday afternoon beginning June 21. Meetings are held at the College Center for card playing, sewing, refreshments and conversation.

## Exhibits

A variety of student art exhibits, educational film previews, and textbook exhibits have been scheduled for summer student enjoyment. An annual highlight is the International Salon of Photography, to be held this year on June 13.



Long's Peak, one of the highest peaks in the Rocky Mountain chain, is just an hour's drive from Greeley.

## Greeley

Besides campus activities, students are urged to take full advantage of the complete community activities program in Greeley. Facilities include a Community Building, eight city parks, two golf courses, two museums, not to mention movie theaters and numerous restaurants for the pleasure of CSC students and their families.

Greeley is a city of approximately 35,000 people, located at the junction of U.S. Highways 34 and 85. Ideally situated, Greeley lies just fifty miles north of Denver, south of Cheyenne, Wyoming, and east of Estes Park, Gateway to the Rocky Mountain National Park.

## Colorado

A popular weekend recreation for CSC summer students and their families are "Circle Trips," two-day automobile excursions from Greeley to various parts of Colorado and back. Ranging in distance from 100 to 250 miles, popular circle trips include ventures to Central City, the ghost mining town that vividly recalls the era of the Old West; the Cache la Poudre Canyon and Red Feather Lake area; Rocky Mountain National Park, featuring more than 84 named peaks at elevations of more than 11,000 feet and the breath-taking views from Trail Ridge Road; Red Rocks Theater; Denver, capital of the State of Colorado; Colorado Springs, the site of the Garden of the Gods and the Air Force Academy; the Royal Gorge; and Grand Lake. More ambitious circle trips may include Mesa Verde, with its rich Pueblo Indian history and relics, or portions of the Western Slope of the Rocky Mountains.

# Admissions Policy

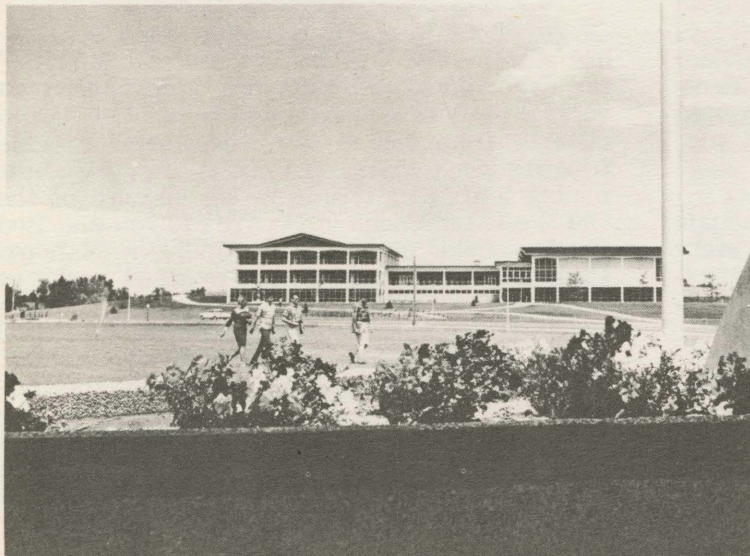
Students applying for admission to Colorado State College for Summer Quarter should complete and return the reply card bound into this bulletin. Students applying for the first time or for the first time since September, 1959, should complete and return the Statistical Information Form also bound into the bulletin. Additional information required as part of application for admission depends upon the status of the student as defined below. Inquiries concerning the graduate program or graduate admissions should be directed to the Dean of the Graduate Division. Undergraduates should contact the Director of Admissions for application forms. There are no admission or evaluation fees.

## Graduate Students

The College requires that the Graduate Record Examination aptitude section (verbal and quantitative) scores accompany the doctoral application. If a student scores below the minimum acceptable score in the aptitude section he will be denied admission to the "formal" doctoral program. Students seeking a graduate degree from CSC may transfer eight quarter hours toward a master or specialist degree and 12 quarter hours toward either doctorate degree.

## Transfer Students

The college accepts a maximum of 135 quarter hours transfer credit on undergraduate programs. Only 90 hours of the transferred credit may be granted by junior colleges. All degree-seeking students must submit two transcripts of previous college work and a health report. Undergraduate students must also submit a transcript of high school studies and an official application for admission.



## Freshmen

Students who are entering college for the first time should write to the Director of Admissions for information and application forms. To be eligible to apply for admission, in-state freshmen must graduate in the upper two-thirds of their class and out-of-state students in the upper half and meet other minimal admission standards as defined in the general college catalog.



Many students returning to CSC for additional studies have the opportunity to renew acquaintances with faculty members and students (above).

Located at the highest elevation in Greeley is the College Center (left) one of several new buildings now in use on the West Campus.

# Housing Information

College housing is available in residence halls for single men and women and for married couples without children. All accommodations in the residence halls include room and board. The rooms are arranged to accommodate two persons per room. Married couples are housed in residence halls, providing either the husband or the wife is a student.

If the applicant desires to cancel his application in the residence halls or College houses for Summer Quarter accommodations and notifies the Director of Student Housing on or before May 1, \$40.00 will be refunded. Cancellations received from May 1 to June 1, \$25.00 will be refunded. Cancellations received after June 1, no refund of deposit. If a student moves into a residence hall, but withdraws before the end of the quarter, he is charged full room rent and is charged board for the days he was in residence, and forfeits the \$50.00 deposit. If all provisions of the contract have been complied with and no damage charges have been assessed, the \$50.00 deposit will be refunded at the end of the Summer Quarter.

The College has a limited amount of housing for married students with one or two children in a residence hall with resident cooking facilities. Many students find rooms, apartments and houses in Greeley. Room and apartment rental listings are available to any student who desires to call in person at the Housing Office. Arrangements for accommodations with private landlords cannot be made by the Housing Office by mail, but must be made by the student directly with the landlord. Students and landlords are both advised to have a clear understanding, preferably in writing, as to facilities, prices and intended length of tenancy.

A limited number of College-owned sorority and fraternity houses are available for single women and married couples without children. Houses accommodating single women have two or more students per room and no food service. Houses for married couples without children provide a room for each couple with community lounge and cooking privileges, but no food service.

	Min.	Max.
Board & Room Residence Halls*	\$265.00	\$325.00
(For further details, contact Director of Housing, Colorado State College)		
Rooms Only* (2 to 4 occupants in adapted fraternity or sorority houses)		
Single Women . . . . .	80.00	80.00
Married Couples		
(rates for 2 persons) . . . . .	160.00	160.00
Residence Hall Rooms Only		
Family (Limited to a student and 3 dependents; not available for single students or married couples without children) . . . . .	275.00	275.00

\*The college furnishes and launders college-owned sheets, pillow cases and blankets for single student housing.

Housing information for periods less than 10 weeks may be obtained from Director of Housing, Colorado State College.

PLEASE PRINT  
**Colorado State College—1967**  
**Summer Quarter**  
**APPLICATION FOR COLLEGE HOUSING**

Name \_\_\_\_\_  
                              (LAST)                              (FIRST)                              (MIDDLE)

Address \_\_\_\_\_  
  (STREET)                              (CITY)                              (STATE)                              (ZIP CODE)

Sex \_\_\_\_\_ Age \_\_\_\_\_

College housing desired — \_\_\_\_\_ **Please Enclose a \$50 Deposit**  
(All rooms are for two or four persons)

My classification is \_\_\_\_\_ Fresh.-Soph.  
\_\_\_\_\_ Residence Hall \_\_\_\_\_ College House \_\_\_\_\_ Jr.-Senior  
\_\_\_\_\_ Accommodations desired for man and \_\_\_\_\_ Graduate  
  wife.  
\_\_\_\_\_ Accommodations desired for family

# Tuition, Fees

Basic required tuition and fees paid by every student are collected for the number of rated credit hours of the courses for which a student registers. These are applicable to every enrollment: for partial or full study, for Colorado resident or non-resident status, and for credit or non-credit status.

All charges are due and payable at the time of regular registration or during registration for special classes. No registration is complete until the assessed charges are paid at the Accounting Office. Any registration permitted at a time other than that scheduled as defined by the regulations of this bulletin will carry a late registration fee. Please consult the incidental fees table below.

Fees for added services, individual instruction, special programs and courses carrying laboratory or field trip expenses will be assessed and paid at registration in like manner with basic tuition and fees. For programs leading to the Specialist in Education and Doctoral degrees, the General Catalog itemizes extra charges (including phasing fees) which are assessed to the student. No graduate program phasing fees will be altered or refunded if the student fails to pursue his intent or for any reason drops out of the program for which he has been accepted.

Certain tuition scholarships and waivers are issued to apply in the fall, winter and spring quarters, only; others, principally Joint Honor Scholarships and Colorado State College Awards, are now validated as well for use during the summer quarter. Only that portion of the credit hour charge represented by the tuition is waived.



Located on the lower level of the New College Center, the Bookstore offers a wide selection of school and personal supplies.

Holders of Student Teaching Reciprocity Waivers which are issued for fractional loads, are granted waivers for tuition plus student services fees for the credit hour value only of the STRW presented.

Determination of residence for tuition assessment purposes is made at registration in accordance with C.R.S. 1963, 124-18-1-5, a Colorado Statute governing residence status and applicable to all state institutions of higher education in Colorado.

The Trustees of the State Colleges, the governing body for Colorado State College, reserves the right to alter tuition, fees, rentals, and/or board and room charges on 30 days notice prior to the first day of registration for a summer quarter.\*

Tuition and Fees:		Summer 1967 Per Credit Hour of Enrollment	
<b>Colorado Resident</b>			
Tuition	.....	\$ 4.50	
Student Service Fee	.....	2.00	\$ 6.50
<b>Non-Colorado Resident</b>			
Tuition	.....	10.00*	
Student Service Fee	.....	2.00	12.00

Complete tuition and student services fee assessments are computed by multiplying the number of course credit hours by \$6.50 for residents and \$12.00 for non-residents.

\*Under consideration by the Trustees at release date of this Bulletin is a change in the non-Colorado Resident Tuition from \$10.00 per credit hour to \$13.50 per credit hour in keeping with a policy designated by the appropriating authority of the State of Colorado. The exact amount of the change will be announced not later than May 1, 1967.

## Incidental Fees

- Late Registration: Assessed for an enrollment completed on the first day following the scheduled registration day ..... \$5.00
- Assessed for each added day, if late registration is permitted, per day ..... 2.00
- Special examination: Assessed when permission is granted to take an examination at a time other than regularly scheduled ..... 2.00
- Change of Program: Assessed for each separate change of program permitted ..... 1.00

See the 1966-67 General Catalog for other fees which may be applicable in the terms of a particular registration.

## Refunds Policy

To be eligible for a refund of any kind under college regulations, the student must present a copy of an approved formal withdrawal notice to the Business Office. Forms may be obtained from the Records Office. Partial refunds for full quarter classes are granted only for early withdrawals. No refund will be granted for special short-period classes after the first meeting of the class. Please consult the 1966-67 General Catalog for the specific refund policies of the College.

# Summer Faculty

Darrell Holmes, Ph.D., President	-----	Frasier 203
Donald G. Decker, Ph.D., Sc.D., Dean of the College and Director of Summer School	-----	Frasier 203
William Hartman, Ed.D., Director of Public Relations	-----	Frasier 108
Norman T. Oppelt, Ph.D., Dean of Students	-----	Frasier 119
Glen C. Turner, M.B.A., D.P.S., Controller	-----	Frasier 5
Duane E. Henderson, M.A., Registrar	-----	Frasier 123
Frank P. Lakin, Ed.D., Administrative Assistant to the President	-----	Frasier 203
Tyrus Hillway, Ph.D., Assistant to the President—Faculty	-----	Frasier 203
J. Gilbert Hause, Ed.D., Coordinator of Administrative Services	-----	Frasier 115
George Leach, M.A., M.S., Assistant to the Dean of the College	-----	Frasier 203
Arthur R. Reynolds, Ph.D., Dean of the Graduate Division	-----	Frasier 207

## SCHOOL OF ARTS AND SCIENCES

Frease, Forrest W., Ph.D., Dean	-----	Carter 205
Glidden, Harley, Ph.D., Associate Dean, Sciences and Mathematics	-----	Ross 147
Aas, Wallace, M.A., Chairman, Dept. of Physics	-----	Ross 48
Ahlberg, Verne, M.A.	-----	Cranford 6
Ahn, Choong Sik, M.A.	-----	Kepner 208
Anders, Frank W., M.A.	-----	Ross 308
Arnold, Dean A., Ph.D.	-----	Kepner 202
Barthell, Robert J., M.A.	-----	Carter 205
Beel, John A., Ph.D., Chairman, Dept. of Chemistry	-----	Ross 134
Boeck, George A., Ph.D.	-----	Kepner 212
Boyle, Thomas, Ph.D.	-----	Carter 201A
Byerly, Benjamin, Ph.D.	-----	Kepner 119A
Cavanagh, Timothy, Ph.D.	-----	Ross 314
Christensen, Harald P., Ph.D.	-----	Kepner 202
Cleere, Ford, M.A.	-----	Frasier 108
Crawford, Richard J., Ph.D.	-----	Kepner 106
Crockett, George, M.A.	-----	Ross 345
Cross, Neal M., Ed.D., Chairman, Dept. of English	-----	Carter 402
Eggert, Donald D., Ph.D.	-----	Ross 310
Elliott, Donald D., Ph.D.	-----	Ross 310
Farren, Jerry D., M.A.	-----	Kepner 220A
Fay, George, Ph.D.	-----	Cranford 304
Freeman, Sam, Ph.D.	-----	Carter 206
Fiel, Larry D., B.S.	-----	Ross 44
Fields, Clark L., Ph.D.	-----	Ross 131
Fisch, Forest N., M.A., Chairman, Dept. of Mathematics	-----	Ross 323
Fry, Richard K., Ph.D.	-----	Ross 45
Gapter, John K., M.S.	-----	Ross 238
Gates, George G., Ed.D.	-----	Carter 306
Girault, John S., M.A.	-----	Frasier 68
Graham, Robert S., Ph.D.	-----	Cranford 210
Griffiths, L. Christopher, A.B.	-----	Kepner 121A
Harrison, John, Ph.D.	-----	Carter 306
Hartman, William, Ed.D.	-----	Frasier 108
Heimerl, Beatrice B., Ed.D.	-----	Gunter Annex 101
Holley, Donald L., Ed.D.	-----	Kepner 6A
Huff, Chester C., Jr., M.A.	-----	Carter 504
James, MarLynn, Ph.D.	-----	Ross 129
Jamison, Frank R., M.S.	-----	Cranford 9
Johnson, Robert L., M.S.	-----	Ross 311
Kearns, Kevin C., Ph.D.	-----	Cranford 220A
Kelsay, Margaret, M.A.	-----	Carter 205
Knapp, Ray B., Ph.D.	-----	Kepner 208
LaBorne, Paul C., M.A.	-----	B. Lehr 201A
Larson, Robert W., Ph.D.	-----	Kepner 211
Lehrer, Paul L., Ph.D.	-----	Kepner 220A
Longwell, Robert L., M.A.	-----	B. Lehr 204A
Matoren, Stanley, M.A.	-----	Kepner 122
Mickey, Barbara, Ph.D.	-----	Kepner 116
Mickey, John R., B.S., Chairman, Dept. of Anthropology-Sociology	-----	Cranford 305
Miller, Roger W., M.A., Chairman, Dept. of Foreign Lang.	-----	Cranford 209
Moinat, Arthur D., Ph.D.	-----	Ross 241
Neal, Louise, Ed.D.	-----	B. Lehr 113A
Olson, Kenneth V., Ph.D.	-----	Ross 350
Ozawa, Terutomo, Ph.D.	-----	Kepner 121A
Perchlik, Richard A., Ed.D., Chairman, Dept. of Political Science	-----	Kepner 211
Plakke, Ronald, Ph.D.	-----	Ross 235
Pogue, Pauline C., M.A., Chairman, Dept. of History	-----	Kepner 212
Popejoy, William D., Ed.D.	-----	Ross 313
Powers, Stephen T., Ph.D.	-----	Kepner 217A
Quammen, Francis, M.A.	-----	Kepner 202

Raghunandan, Kunhunni, Ph.D.	-----	Ross 312
Rich, Royal, Ph.D.	-----	Ross 236
Rothaus, Barry, M.A.	-----	Kepner 122A
Rowland, Ruth, M.A.	-----	Ross 333
Rubenstein, Frank, Ph.D.	-----	Cranford 302
Schmidt, Donald L., Ph.D.	-----	Ross 309
Schmidt, Gerald D., Ph.D.	-----	Ross 239
Schweers, Rex R., M.A.	-----	Ross 318
Schreck, James O., Ph.D.	-----	Ross 136
Shropshire, K. Lee, M.S.	-----	Ross 335
Stamper, Maynard, Ph.D., Chairman, Dept. of Biological Science	-----	Ross 243
Starr, Wendell R., Ph.D.	-----	Carter 201A
Sund, Robert B., Ed.D.	-----	Ross 348
Thomas, Bert O., Ph.D.	-----	Ross 242
Tillery, Bill, M.A.	-----	Ross 343
Tolar, Robert, M.A.	-----	Ross 318
Tollefson, Oscar W., Ph.D., Chairman, Dept. of Earth Science	-----	Ross 333
Toussaint, Sylvester R., Chairman, Dept. of Speech and Theatre Arts	-----	Kepner 107
Trainer, Orvel L., Ph.D., Chairman, Dept. of Economics	-----	Kepner 121A
Trowbridge, Leslie, Ph.D., Chairman, Dept. of Science Education	-----	Ross 349
Vest, E. Dean, Ph.D.	-----	Ross 233
West, Lee R., M.A., Chairman, Dept. of Geography and Coordinator of Social Science	-----	Kepner 201A
Willcoxon, John W., III, Ph.D.	-----	Frasier 70
Willoughby, Gary, M.A.	-----	Cranford 302
Winchester, A. M., Ph.D.	-----	Ross 240
Wing, Fred, M.A.	-----	Carter 402
Woerner, Dale E., Ph.D.	-----	Ross 129
Wolfe, Welby B., Ed.D.	-----	Frasier 70

## SCHOOL OF EDUCATION

Kelly, Edward J., Ph.D., Dean	-----	Cranford 106
Sanderson, Geo. F., Assistant to the Dean	-----	Cranford 106
Anderson, Darrell, Ph.D.	-----	Gunter Annex 101
Barnhart, Alvin E., Ed.D.	-----	Kepner 16
Berremann, Norman P., M.A.	-----	Gunter Annex 210
Blanchard, Howard, Ed.D.	-----	Gunter Annex 7
Bothell, John E., Ed.D., Chrm., Dept. of History & Philosophy of Education	-----	Cranford 201
Bowen, James K., Ed.D.	-----	Frasier 119
Bowman, Harold, Ed.D.	-----	Cranford 9
Brenckle, A. Gordon, M.A.	-----	Cranford 9
Broderius, Bruce, Ed.D.	-----	Cranford A
Cegelka, Walter, Ed.D.	-----	B. Lehr 145D
Chaloupka, Donald, Ed.D.	-----	B. Lehr 108A
Clark, H. Clifford, Ed.D.	-----	Cranford 100A
Claybaugh, Amos L., Ed.D.	-----	Cranford 101A
Clevenger, Susan J., Ed.D.	-----	Gunter Annex 101
Collins, Harry E., M.A.	-----	Frasier 104
Dunwell, Robert R., Ed.D., Chmn., Dept. of Secondary Curriculum & Instruction	-----	Cranford 201
Eldredge, Garth, Ph.D.	-----	1025 20th St.
Forgnone, Charles, M.A.	-----	B. Lehr 145C
Findley, Kenneth W., Ed.D.	-----	Cranford A
Fulbright, John B., Ed.D.	-----	Gunter Annex 211
Gagon, Glen S., Ed.D.	-----	Cranford 114
Gearheart, Bill R., Ed.D.	-----	B. Lehr 145F
Gelhart, Robert P., M.A.	-----	1919 10th Ave.
Harkness, Marjorie, Ed.D.	-----	Cranford 101A
Henkels, Milo, M.A.	-----	B. Lehr 136
Hillway, Tyrus, Ph.D.	-----	Frasier 203
Hogan, Kenneth, Ed.D.	-----	Cranford 105
Hunn, Bernice E., Ed.D.	-----	Cranford 101A
Hunt, Hudine, M.A.	-----	B. Lehr 138
Jardine, Alex, Ed.D.	-----	Kepner 16

Kinnick, Bernard C., Ed.D.	-----	Cranford	103
Kolstoe, Oliver P., Ph.D.	-----	B. Lehr	145A
Koplitz, Eugene D., Ph.D.	-----	Gunter Annex	211
Lewis, Juanita, Ph.D.	-----	Cranford	100
Lowry, Betty, Ph.D.	-----	Cranford	202
Luker, Arno H., Ed.D., Chmn., Dept. of Psych., Counseling & Guidance	-----	Gunter Annex	102
Luketich, Donald M., Ed.D.	-----	Kepner	16
Lutey, Carol, Ph.D.	-----	Gunter Annex	9F
McAlees, Daniel C., Ph.D.	-----	B. Lehr	142
Meier, John H., M.A.	-----	Cranford	205
Miller, Gary E., M.A.	-----	Frasier	18
Montgomery, Lola J., Ed.D.	-----	Gunter Annex	9C
Morgenstern, Robert E., M.A.	-----	Gunter Annex	9B
Morrison, Gaylord D., Ed.D.	-----	Cranford	202
Mosbo, Alvin O., Ed.D., Chairman, Dept. of Elementary Education	-----	Cranford	101A
Moss, Robert H., Ed.D.	-----	Cranford	F
Myers, Donald L., M.A.	-----	Carter	204
Napier, Grace A., M.Ed.	-----	Gunter Annex	9B
Nelson, Theodore M., Ph.D.	-----	Cranford	103
Ninemires, H. D., M.A.	-----	Cranford	B
Oppelt, Norman T., Ph.D.	-----	Frasier	119
Partridge, Arthur, Ed.D., Chairman, Dept. of Educational Administration	-----	Kepner	16
Peterson, Dwayne D., M.A.	-----	1025 20th St.	
Pierce, Keith A., Ed.D.	-----	Gunter Annex	9A
Quinlan, Claire A., Ph.D.	-----	Cranford	103
Reid, William R., Ph.D.	-----	1919 10th Ave.	
Ritter, Emmett A., Ed.D.	-----	Cranford	12
Roscoe, John, Ph.D.	-----	Cranford	12
Schmid, John, Ph.D., Director, Bureau of Educational Research	-----	Cranford	12
Seager, Donald E., M.S.	-----	Cranford	9
Smitherman, Donald W., Ph.D.	-----	B. Lehr	142
Stoffler, James A., M.A.	-----	Cranford	202
Stuckey, June A., Ph.D., Chmn., Dept. of College Student Personnel Work	-----	Frasier	121
Tanner, Gerald, M.A.	-----	Frasier	121
Turner, E. Dean, Ph.D.	-----	Cranford	9
Usher, Richard H., Ed.D.	-----	Gunter Annex	210
Van Maanen, Everett H., Ed.D.	-----	Cranford	E
Vaughan, Tony D., Ed.D., Chairman, Dept. of Special Education	-----	B. Lehr	147
Weishahn, Mel, M.A.	-----	B. Lehr	130
Williams, Elmer D., M.A.	-----	B. Lehr	218A
Williamson, John A., Ed.D.	-----	Cranford	12
Wolfe, Richard R., Ph.D.	-----	1025 20th St.	
Wood, C. David, Ed.D.	-----	Cranford	9

#### DIVISION OF THE ARTS

Perry, Kenneth F., Ph. D., Chairman	-----	Gugg.	101
Bailey, Myrtle, Ph.D., Chairman, Dept. of Home Economics	-----	Crabbe	208
Ball, Richard, M.A.	-----	Gugg.	202
Blubaugh, Charles, M.A.	-----	Gugg.	202
Cadigan, Marianna, M.A.	-----	Crabbe	207
Cordiner, William S., M.A.	-----	Gugg.	202
Davis, Jim L., Ed.D.	-----	Crabbe	107
Erwin, W. R., Ed.D.	-----	Art Annex	200
Funderburk, Clara, M.A.	-----	Crabbe	205
Grale, Joyce, M.A.	-----	Crabbe	207
Green, Olive, M.A.	-----	Gugg.	103
Green, Walt, M.A.	-----	Gugg.	202
Hall, Rhoda, M.A.	-----	Crabbe	307
Hammond, Robert G., Ed.D.	-----	Crabbe	107
Hutchinson, Joseph M., M.A.	-----	Gugg.	103
Jelden, David L., Ed.D., Chairman, Dept. of Industrial Arts	-----	Art Annex	300
Johnson, Dana F., Ed.D.	-----	Gugg.	102
Johnson, F. Morris, Ed.D.	-----	Art Annex	100
Kruger, John M., M.A.	-----	B. Lehr	152A
Leacock, Rose A., M.A.	-----	Gugg.	103
Mariani, John I., M.A., Chairman, Dept. of Fine Arts	-----	Gugg.	101
Nye, Juanita, M.S.	-----	Crabbe	308
Olson, David, M.A.	-----	Crabbe	107
Reeves, Marilyn, M.S.	-----	1919 10th Ave.	
Scamell, Evalyn, M.Ed.	-----	Gugg.	102
Schumacher, Herbert, M.F.A.	-----	Gugg.	1
Taylor, Jo Ann, M.A.	-----	Crabbe	307

#### DIVISION OF BUSINESS

Heimerl, Ramon P., Ph.D., Chairman	-----	Cranford	214
Damgaard, John A., Ed.D.	-----	Cranford	214

Forkner, H. L., Ed.D.	-----	Cranford	214
Hillestad, Mildred, Ph.D.	-----	Cranford	214
Kennedy, Calvin, Ph.D.	-----	Cranford	214
Thames, James P., M.A.	-----	Cranford	214
Waterman, Roland C., Ed.D.	-----	Cranford	211
Will, Ted, M.A.	-----	Cranford	214
Yetka, Alice, Ed.D.	-----	Cranford	214

#### DIVISION OF HEALTH,

#### PHYSICAL EDUCATION AND RECREATION

Butler, L. C., Ed.D., Chairman	-----	Gunter	109A
Barham, Jerry N., Ed.D.	-----	Gunter	103C
Behling, Mary A., M.A.	-----	Gunter Annex	208A
Benich, Thomas B., M.A.	-----	Gunter	B4
Blasi, Robert, M.A.	-----	Gunter	B3
LaBonde, Jack, M.A.	-----	Gunter	B4
Lindahl, Virgil Y., M.A., P.E.Dir.	-----	Gunter	106
McKain, Harold L., Jr., Ph.D.	-----	Gunter	103B
McMillen, Warren J., M.A.	-----	Gunter	B4
Montgomery, Robert A., Ed.D.	-----	Gunter	103B
Notto, Carole Y., M.A.	-----	Gunter Annex	208
Pearson, George B., Ed.D.	-----	Gunter	103B
Rossi, Anthony, M.A.	-----	Gunter	B5
Sage, George, Ed.D.	-----	Gunter	B2
Shirley, Max, Ed.D.	-----	Gunter	103B
Wright, Thurman N., Dir. of P.E.	-----	Gunter	B4

#### LABORATORY SCHOOL

Kerns, LeRoy, Ed.D., Director	-----	B. Lehr	112A
Benson, Charles, M.A., Principal, Ernest Horn Elementary School	-----	B. Lehr	118
Bruce, Josephine, M.A.	-----	B. Lehr	122A
Gunning, Lelloine, M.A.	-----	B. Lehr	224A
Mueller, Louise S., M.A.	-----	B. Lehr	211B
Shoemaker, Joseph, Ed.D.	-----	B. Lehr	103A
Trigg, Dorris, M.S.	-----	B. Lehr	124A

#### LIBRARY

Seager, Daniel A., M.A., Director of Library Services	-----	Carter	208
Bachenberg, Elmer, M.A.	-----	Carter	211C
Brown, Lois, M.A.	-----	Carter	209
Elkins, Thelma L., M.A.	-----	Carter	401
Greer, James, M.A.	-----	Carter	211A
Hall, Josephine, M.A.	-----	Carter	203
Hofer, Sam L., M.S.	-----	Carter	211C
Koehmstedt, Carol, M.A.	-----	Carter	401
Kovacs, Gabor, M.A.	-----	Carter	207
Richardson, Winnifred, M.A.	-----	Carter	307
Rider, Mary, A.B.	-----	Carter	401
Tilden, Vivian, M.A.	-----	Carter	211C

#### DIVISION OF MUSIC

Miller, James D., Ph.D., Chairman (On Leave)	-----	Frasier	159
Baker, Edwin, M.Mus.	-----	Frasier	167
Bartlett, Loren, Ph.D.	-----	Frasier	170
Fluke, John H., Ed.D.	-----	Frasier	166
Garlick, Don, D.M.A.	-----	Frasier	52
Ginsburg, Blanche, B.A.	-----	Frasier	253
Goes, Derryl, M.A.	-----	Frasier	166
Goodbrod, Rupert, M.A.	-----	Frasier	154
Himmel, Joseph, M.Mus.	-----	Frasier	252
Hutcherson, Rita, Ph.D.	-----	Frasier	155
James, Robert, M.Mus.	-----	Frasier	48
Johnson, Germaine, M.A.	-----	Frasier	153
King, Ralph R., Ed.D.	-----	Frasier	49
Menk, Anthony, M.A.	-----	Frasier	151
Mickens, Howard M., M.Mus.	-----	Frasier	251
Mohr, E. E., Ed.D.	-----	Frasier	255
Nofziger, Dwight E., M.A.	-----	Frasier	250
Robinson, Donald T., M.A.	-----	Frasier	250
Schenkman, Walter A., D.Mus.	-----	Frasier	152
Schmitz, Claude M., M.A.	-----	Frasier	150
Skinner, Howard, D.Mus.	-----	Frasier	254
Smith, Robert, Ed.D.	-----	Frasier	49
Walker, Wayman, M.Mus.	-----	Frasier	50

#### DIVISION OF NURSING

McMinn, L. Elaine, M.S., Chairman	-----	Cranford	204
Carlson, Jean, M.S.	-----	Cranford	206
Hallan, Mabel, M.S.	-----	Cranford	206
Payton, Rita, M.S.	-----	Cranford	206
Rubenstein, Vera, M.Litt.	-----	Cranford	206
Sawatzky, Gordon, M.S.	-----	Cranford	206
Self, Evelyn, M.S.	-----	Cranford	206
Thiele, Joan E., M.S.	-----	Cranford	206

# Registration

Registration for regular classes will take place June 12 and 13 in Carter Hall and Gunter Hall. Registration materials are obtained in Carter Hall, and students will confer with their advisers, then obtain class cards, in Gunter Hall.

Summer quarter students will register as follows:

June 12	8:00 - 9:00 a.m.	A-B
	9:00 - 10:00 a.m.	C-D
	10:00 - 11:00 a.m.	E-F
	11:00 a.m. - Noon	G
	1:00 - 2:00 p.m.	H-I
	2:00 - 3:00 p.m.	J-K
	3:00 - 4:00 p.m.	L
June 13	8:00 - 9:00 a.m.	Mc-M
	9:00 - 10:00 a.m.	N-O-P
	10:00 - 11:00 a.m.	Q-R
	11:00 a.m. - Noon	S
	1:00 - 2:00 p.m.	T-U-V
	2:00 - 3:00 p.m.	W
	3:00 - 4:00 p.m.	X-Y-Z

To insure proper registration, follow these steps:

1. Obtain registration materials in Carter Hall in accordance with the above alphabetical arrangement and dates.
2. Fill in all registration cards accurately and as completely as possible before conferring with advisers and major professors.
3. Secure the adviser's signature on the Registration Form in Gunter Hall. Be sure all cards are 100 per cent complete.
4. Go to the specific division tables to secure your correct class cards and laboratory cards (if applicable). Compare registration cards with these class cards to be absolutely sure correct class cards have been given to you.
5. Enter the Women's Gym via the west archway from the Men's Gym. Stop at checking tables where "checkers" will check every card for possible errors.
6. Veterans who must complete Veterans Administration forms must report to the Financial Aid Office in Frasier 105.
7. Leave the Women's Gym via the west door and proceed to Frasier Hall for payment of fees.

Students who complete registration after June 13 will be assessed a late registration fee as described on page 11 of the Summer Bulletin. No registration for 10-week classes will be permitted after 4 p.m. Friday, June 16.



New students at CSC can expect personalized help in becoming acquainted with the campus and program.



Each CSC student is assigned a faculty adviser who will assist in scheduling classes and planning programs.

## Special Courses

Registration for special courses may be completed during regular registration, June 12 or 13, or at the Records Office, Frasier 126, after June 13. Students must register before the first class meeting. It is the student's responsibility to learn when his first class meets.

A student may register for any class for no credit by paying regular tuition and fees. Class cards may be obtained from the Dean of the College. No audit or visitors cards are issued.

## Graduation

Graduation will be at 7 p.m. Thursday, August 17, in Garden Theater. Graduating students are required to participate in graduation exercises. Caps and gowns may be rented from the College Bookstore.

## Final Examinations

Final examinations will be held Wednesday, Thursday and Friday, August 16-17-18, according to the published schedule, unless special arrangements are made by the instructor for special examination periods. A student who must be absent any part of the last week of the course or for final examinations makes arrangements with his instructor to receive an Incomplete, if his reasons and previous work warrant this privilege. If arrangements are not made, the student receives an F. Only in extreme emergency (death, illness, jury duty, armed services directives) may an instructor grant an early examination privilege, which requires a fee and a special examination.

# Schedule of Classes

## CALENDAR

*Registration .....	June 12, 13
Last Day of Registration without Late Fee ..	June 13
Classes Begin .....	June 14
Last Day of Registration with Late Fee .....	June 16
†Graduate Record Examination (GRE)—Aptitude .....	June 20
†Graduate Record Examination (GRE)—Area .....	June 21
†Graduate Record Examination (GRE)—Advanced Test—Education .....	June 22
Last Day for Adding Courses .....	June 22
†English Usage Examination (graduate) ...	June 24
Independence Day (holiday) .....	July 4
Deadline for Filing Research Studies in Graduate Office (prior to scheduling defense of study three weeks later) .....	July 10
Mid-Term Examinations .....	July 17-21
Deadline for Filing Comprehensive Examinations .....	July 31
Deadline for Filing Theses, Specialists' Practicums and Doctoral Research Studies	July 31
Last Day for Dropping Courses (no tuition refund) .....	August 4
Commencement .....	August 17
Final Examinations .....	August 16, 17, 18

\*See Registration Schedule and Instructions, Page 13.  
†GRE Aptitude scores are used as admission criteria in the Ed.S. and Ed.D. programs; obtain tickets of admission from Testing Office, Cranford 103.

## FINAL EXAMINATION SCHEDULE SUMMER QUARTER, 1967

Schedule I for classes that meet daily, 4 days, 3 days, or includes MWF, such as MT, MW, TWTh, TF				
Exam Period	Exam Time	Wednesday Aug. 16	Thursday Aug. 17	Friday Aug. 18
	6:30 - 8:00 p.m.	7:00 a.m.		
Exam Period 1 .....	7:15 - 8:45	11:15	12:20	1:25
Break .....	8:45 - 9:00			
Exam Period 2 .....	9:00 - 10:30	2:30	3:35	4:40
Break .....	10:30 - 10:45			
Exam Period 3 .....	10:45 - 12:15	8:00	9:05	10:10
Break .....	12:15 - 12:30			

Schedule II for any class meeting just T, Th, or on both TTh				
Exam Period	Exam Time	Wednesday Aug. 16	Thursday Aug. 17	Friday Aug. 18
Exam Period 4 .....	12:30 - 2:00	11:15	12:20	1:25
Break .....	2:00 - 2:15			
Exam Period 5 .....	2:15 - 3:45	2:30	3:35	4:40
Break .....	3:45 - 4:00			
Exam Period 6 .....	4:00 - 5:30	8:00	9:05	10:10
Dinner .....	5:30 - 6:30			
Exam Period 7 .....	6:30 - 8:00 Spec. Exam	Spec. Exam	Spec. Exam	Spec. Exam
Break .....	8:00 - 8:15			
Exam Period 8 .....	8:15 - 9:45 7:00 a.m., T, Th	Spec. Exam	Spec. Exam	Spec. Exam

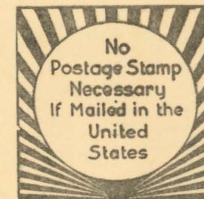
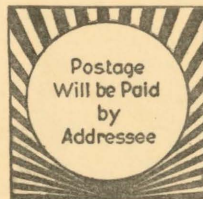
Night classes will have their exams the last 1½ hours of the last night the class meets.  
Monday night classes—Aug. 14      Wednesday night classes—Aug. 9  
Tuesday night classes—Aug. 15      Thursday night classes—Aug. 10  
No graduating senior will be required to take Final Exams during Final Exam periods.

## UNDERGRADUATE GENERAL EDUCATION COURSES

- 7:00 a.m.**  
COM 1-1 Elementary Composition I, 3 hours, Unassigned, MWF, Kepner 110.  
COM 2-1 Elementary Composition II, 3 hours, Wing, MWF, Kepner 118.  
COM 3-1 Principles of Speech, 3 hours, Longwell, TTh, Kepner 205; *class meets T, 7:00-8:50; Th, 7:00-7:50.*  
HPER 61-1 Personal and Community Health, 3 hours, Unassigned, MWF, Gunter 203.  
**8:00 a.m.**  
COM 1-2 Elementary Composition I, 3 hours, Kelsay, TTh, Kepner 110; *class meets T, 8:00-9:55; Th, 8:00-8:50.*  
COM 3-2 Principles of Speech, 3 hours, R. Crawford, MWF, Kepner 110.  
HPER 61-2 Personal and Community Health, 3 hours, Wright, MWF, Frasier 205.  
HUM 1-2 Introduction. The Greek and Roman Periods, 3 hours, Unassigned, MWF, Carter 304.  
**9:05 a.m.**  
SCI 5-3 Earth Science, 3 hours, Rowland, MWF, Ross Lecture 105; *juniors and seniors are urged to take a substitute for this course.*  
HUM 2-3 The Middle Ages and the Renaissance, 3 hours, Unassigned, MWF, Carter 304.  
**10:10 a.m.**  
COM 3-4 Principles of Speech, 3 hours, Longwell, MWF, Kepner 6.

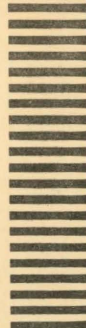
- SS 82-4 American Life and Institutions, 3 hours, Perchlik, MWF, Kepner 218.  
**11:15 a.m.**  
COM 2-5 Elementary Composition II, 3 hours, Mott, MWF, Kepner 110.  
SCI 4-5 Biological Science, 3 hours, Plakke, MWF, Ross Lecture 106; *juniors and seniors are urged to take a substitute for this course.*  
**12:20 p.m.**  
COM 1-6 Elementary Composition I, 3 hours, Barthell, MWF, Kepner 110.  
COM 3-6 Principles of Speech, 3 hours, Holley, MWF, Kepner 209.  
HPER 61-6 Personal and Community Health, 3 hours, Unassigned, MWF, Frasier 205.  
HUM 3-6 The Eighteenth to the Twentieth Century, 3 hours, Mott, MWF, Carter 304.  
**1:25 p.m.**  
PCG 20-7 General Psychology, 3 hours, Unassigned, TWF, Kepner 204.  
SCI 3-7 Physical Science, 3 hours, M. James, MWF, Ross Lecture 107.  
**2:30 p.m.**  
PCG 20-8 General Psychology, 3 hours, Unassigned, MWF, Kepner 119.





**BUSINESS REPLY MAIL**  
First Class Permit No. 182—Greeley, Colorado

**REGISTRAR**  
**COLORADO STATE COLLEGE**  
**GREELEY, COLORADO 80631**



Please Read Carefully and Fill Out Card Completely!

### BUSINESS REPLY CARD

THIS CARD MUST BE RETURNED if you intend to enroll for classes at Colorado State College for the current Summer Quarter.

Name Miss   
Mrs.  \_\_\_\_\_  
Mr.  Last First Middle

Address \_\_\_\_\_  
Street City State Zip

Fill in Each Blank Below Which Applies to You:  
**TO BE COMPLETED BY GRADUATE STUDENTS**

1. New..... Returning .....
2. Have been admitted, application has been evaluated and am classified as a degree candidate for .....
3. Unclassified and do not wish to enroll as a degree candidate. ....
4. Wish to apply for admission and evaluation as degree candidate in ..... Yes..... No.....

If you need specific information about a certain course listed in the Summer Bulletin you must write to the particular division concerned.

My student number\* at CSC is \_\_\_\_\_

\*If you have attended CSC since August 31, 1959, you have been assigned a student number. If you do not have a student number you must complete the statistical information form found at the back of this book and mail it to the Registrar immediately. (If you have been assigned a student number but do not remember it, leave the space blank!)

**TO BE COMPLETED BY UNDERGRADUATE STUDENTS**

1. New..... Returning.....
2. Beginning freshman ..... Transfer Student .....
3. Have been admitted, evaluated and classified as an A.B. degree candidate. Yes..... No.....
4. Wish to apply for admission and evaluation as a degree candidate. Yes..... No.....

Please mail the following items to me:

- A Current General Catalog .....
- A Graduate Bulletin .....
- An Additional Statistical Information Form .....

(TEAR OFF)

Please use the attached

### REPLY CARD

to order additional materials and to inform the college of your intention to enroll at

**Colorado State College**  
for the  
**Current Summer Quarter**

# Statistical Information Form Colorado State College--Greeley

If you have not attended Colorado State College since August 31, 1959, you must complete this form and return it to the Registrar's Office prior to registration in order that Registration Materials (IBM CARDS) may be prepared.

**Complete this form with typewriter or print in ink**

**Please complete this line**

Name \_\_\_\_\_  
(Last) (First) (Middle) (Maiden, if applicable)

**(No Nicknames, Please!!)**

Birthdate \_\_\_\_\_  
(Month-Day-Year)

Social Security  
Account Number

Sex: Male ( ) Female ( ) Marital Status: Single ( ) Married ( )

--	--	--	--	--	--	--	--

Permanent Home Address \_\_\_\_\_  
(City) (County) (State) (Country)

If your home is in Colorado, when did this residence begin for you? \_\_\_\_\_

Where were you living during the past 12 months? \_\_\_\_\_

Name of parent or guardian \_\_\_\_\_

Permanent address of parent or guardian \_\_\_\_\_

When did this residence begin for your parent? \_\_\_\_\_

If married, give name of husband or wife \_\_\_\_\_

What was your occupation during the past 12 months? \_\_\_\_\_

City and state of employment \_\_\_\_\_

What was the occupation of your spouse during the last 12 months? \_\_\_\_\_

City and state of employment of spouse \_\_\_\_\_

Name high schools and academies attended:

School Name	City-County-State	Dates Attended	Yr. Graduated

Names of all colleges and universities attended in order of attendance from earliest to latest date.  
 Failure to list colleges or universities previously attended may result in loss of credit or dismissal.

Name of Institution	City State	Period of Attendance (Quarter and/or Semester and the years)	Date of Graduation (if applicable)	Degree Received (if any)

Have you previously taken CSC correspondence or off-campus courses? Yes ( ) No ( ) When? \_\_\_\_\_

Check your proper Classification: Undergraduate ( )  
 Freshman ( )  
 Sophomore ( )  
 Graduate ( ):  
 Master of Arts ( )  
 Specialist ( )  
 Junior ( )  
 Senior ( )  
 Doctor of Education ( )  
 Doctor of Philosophy ( )  
 Unclassified ( )

Your proposed degree program: 1. ( ) Teacher Education  
 2. ( ) Without Teacher Education (Liberal Arts)

Your major(s) \_\_\_\_\_ Minor(s) \_\_\_\_\_

New and returning students: When do you expect to enter (or re-enter) CSC?  
 Fall ( ) Winter ( ) Spring ( ) Summer ( ) Year \_\_\_\_\_

Returning students only: When was your last enrollment at CSC?  
 Fall ( ) Winter ( ) Spring ( ) Summer ( ) Year \_\_\_\_\_

**DO NOT WRITE IN THIS SPACE**

1. \_\_\_\_\_  
Student No.

2. \_\_\_\_\_  
Alpha No.

3. \_\_\_\_\_  
Birthdate

4. \_\_\_\_\_  
Sex

5. \_\_\_\_\_  
Residence Status

6. \_\_\_\_\_  
Classification

7. \_\_\_\_\_  
Degree Program

8. \_\_\_\_\_  
Major

9. \_\_\_\_\_  
Quarter and Year

**DO NOT WRITE IN THIS SPACE**

LAST NAME

FIRST NAME

MIDDLE NAME

MAIDEN, if applicable

## PROFESSIONAL EDUCATION CORE-ATE

(Professional Education Core courses listed below are required of and open only to students who have been formally admitted to the Advanced Teacher Education Program.)

**7:00 a.m.**

- ED 101-1 Basic Concepts of Education, 5 hours, Ninemires, MTWThF, Kepner 214; ATE.  
ED 295-1 Philosophy of Education, 3 hours, Unassigned, MWF, Frasier 249; ATE.

**8:00 a.m.**

- ED 101-2 Basic Concepts of Education, 5 hours, Sanderson, MTWThF, Kepner 214; ATE.  
ED 101-22 Basic Concepts of Education, 5 hours, Ninemires, MTWThF, Kepner 214; ATE.  
ED 295-2 Philosophy of Education, 3 hours, Unassigned, TTh, Frasier 249; ATE; *class meets T, 8:00-9:55; Th, 8:00-8:50.*

**9:05 a.m.**

- PCG 140-3 Educational Psychology, 5 hours, Unassigned, MTWThF, Gunter Annex 105; ATE.

**10:10 a.m.**

- ED 295-4 Philosophy of Education, 3 hours, Unassigned, MWF, Frasier 169; ATE.

**11:15 a.m.**

- ED 295-5 Philosophy of Education, 3 hours, Unassigned, TTh, Frasier 148; ATE; *class meets T, 11:15-1:10; Th, 11:15-12:05.*

**12:20 p.m.**

- PCG 140-6 Educational Psychology, 5 hours, Unassigned, MTWThF, Gunter Annex 105; ATE.

## INTERDIVISIONAL COURSES

(Courses listed as Interdivisional may be used in any College department except Aerospace Studies.)

**7:00 a.m.**

- ID 0300-1 Writing Laboratory for Graduate Students, 0 hours, Unassigned, MTWThF, Kepner 101.  
ID 300-1 Introduction to Graduate Study (Arts), 3 hours, Perry, MWF, Guggenheim 105.  
ID 300-21 Introduction to Graduate Study (Education), 3 hours, Chaloupka, MWF, Bishop-Lehr 166.  
ID 300-31 Introduction to Graduate Study (English), 3 hours, Boyle, MWF, Kepner 205.

**8:00 a.m.**

- ID 0300-2 Writing Laboratory for Graduate Students, 0 hours, Unassigned, MTWThF, Kepner 101.  
ID 300-2 Introduction to Graduate Study (Business), 3 hours, Waterman, MWF, Kepner 216.  
ID 300-22 Introduction to Graduate Study (Education), 3 hours, Chaloupka, MWF, Bishop-Lehr 166.  
ID 300-32 Introduction to Graduate Study (Education), 3 hours, Findley, TTh, Bishop-Lehr 166; *class meets T, 8:00-9:55; Th, 8:00-8:50.*  
ID 300-42 Introduction to Graduate Study (HPER), 3 hours, Butler, MWF, Gunter 201.  
ID 300-52 Introduction to Graduate Study (Speech and Theatre Arts), 3 hours, Holley, MWF, Kepner 205.  
ID 400-2 Introduction to Doctoral Research, 3 hours, Hillway, MWF, Frasier 148.

**9:05 a.m.**

- ID 0300-3 Writing Laboratory for Graduate Students, 0 hours, Unassigned, MTWThF, Kepner 120.  
ID 300-3 Introduction to Graduate Study (Education), 3 hours, Findley, TTh, Bishop-Lehr 166; *class meets T, 10:10-11:00; Th, 9:05-11:00.*  
ID 300-23 Introduction to Graduate Study (Education), 3 hours, Kerns, MWF, Bishop-Lehr 166.

**10:10 a.m.**

- ID 0300-4 Writing Laboratory for Graduate Students, 0 hours, Unassigned, MTWThF, Kepner 101.  
ID 300-4 Introduction to Graduate Study (Education), 3 hours, Kerns, MWF, Bishop-Lehr 166.

**11:15 a.m.**

- ID 300-5 Introduction to Graduate Study (Music), 3 hours, Mohr, MWF, Frasier 168.

**12:20 p.m.**

- ID 0300-6 Writing Laboratory for Graduate Students, 0 hours, Unassigned, MTWThF, Kepner 101.

**2:30 p.m.**

- ID 200-8 American Speech for Foreign Students, 0 hours, Ahlberg, MTWThF, Cranford 6.

## SCHOOL OF ARTS AND SCIENCES

### (THE HUMANITIES, SCIENCES AND SOCIAL SCIENCES)

#### ANTHROPOLOGY

**7:00 a.m.**

- ANT 282-1 Folk Cultures of Middle and South America, 5 hours, J. Mickey, MTWThF, Kepner 122.

**8:00 a.m.**

- ANT 20-2 General Anthropology, 5 hours, Fay, MTWThF, Kepner 118.

**9:05 a.m.**

- ANT 20-3 General Anthropology, 5 hours, B. Mickey, MTWThF, Kepner 219.

**10:10 a.m.**

- ANT 228-4 Oceania, 5 hours, Fay, MTWThF, Kepner 219.

**11:15 a.m.**

- ANT 284-5 Anthropological Theory I, 3 hours, B. Mickey, MWF, Kepner 219.

**12:20 p.m.**

- ANT 323-6 Spanish-American Culture, 3 hours, B. Mickey, TTh, Crabbe 201; *class meets T, 1:25-2:15; Th, 12:20-2:15.*

**1:25 p.m.**

- ANT 281-7 Acculturation, 5 hours, J. Mickey, MTWThF, Kepner 219.

#### APPLIED STATISTICS

**7:00 a.m.**

- APST 275-1 Descriptive Statistics, 5 hours, Ritter, MTWTh, Ross 301; *lab. 2 hours, arranged.*

**8:00 a.m.**

- APST 275-2 Descriptive Statistics, 5 hours, Schmid, MTWTh, Ross 301; *lab. 2 hours, arranged.*

**9:05 a.m.**

- APST 275-3 Descriptive Statistics, 5 hours, Unassigned, MTWTh, Ross 301; *lab. 2 hours, arranged.*

**10:10 a.m.**

- APST 150-4 Elementary Probability Theory, 4 hours, Elliott, MTWF, Ross 302.

- APST 275-4 Descriptive Statistics, 5 hours, Roscoe, MTWTh, Ross 301; *lab. 2 hours, arranged.*

**11:15 a.m.**

- APST 376-5 Statistical Inference, 5 hours, Unassigned, MTWThF, Ross 301.

**12:20 p.m.**

- APST 275-6 Descriptive Statistics, 5 hours, Raghunandan, MTWTh, Ross 301; *lab. 2 hours, arranged.*

- APST 475-6 Design and Analysis of Experiments, 5 hours, Roscoe, MTWThF, Ross 302.

**1:25 p.m.**

- APST 376-7 Statistical Inference, 5 hours, Unassigned, MTWThF, Ross 301.

#### BIOLOGY

**9:05 a.m.**

- BIO 151-3 Cellular Biology, 5 hours, Rich, MWF, Ross 244; *lab. 4 hours, MW, 10:10-12:05.*

**11:15 a.m.**

- BIO 152-5 Genetics, 5 hours, Winchester, MWF, Ross 224; *lab. 4 hours, TTh, 10:10-12:05.*

**12:20 p.m.**

- BIO 251-6 Evolution, 3 hours, Stamper, MWF, Ross Lecture 106.

- BIO 350-6 Seminar in Biological Sciences, 1 hour, Plakke, T, Ross 204.

**1:25 p.m.**

- BIO 254-7 Aquatic Biology, 5 hours, B. Thomas, MWF, Ross 203; *lab. 4 hours, MW, 2:30-4:25.*

**2:30 p.m.**

- BIO 357-8 Biological Research, 5 hours, Winchester, MF, Ross 224; *lab. 6 hours, arranged.*

#### BOTANY

**7:00 a.m.**

- BOT 121-1 Morphology of the Lower Plants, 5 hours, Gapter, MWF, Ross 245; *lab. 4 hours, TTh, 8:00-9:55.*

- 8:00 a.m.**  
 BOT 322-2 Plant Physiology II—Metabolism, 5 hours, Moinat, MWF, Ross 245; *lab. 4 hours, TTh, 8:00-9:55.*
- 9:05 a.m.**  
 BOT 325-3 Plant Ecology, 5 hours, Vest, MWF, Ross 215; *lab. 4 hours, W, 1:25-5:30.*
- 10:10 a.m.**  
 BOT 23-4 General Botany II, 5 hours, J. Patterson, MWF, Ross 245; *lab. 4 hours, TTh, 10:10-12:05.*
- 10:10 a.m.**  
 BOT 225-4 Plant Ecology I—Physiological Plant Ecology, 5 hours, Moinat, MWF, Ross 224; *lab. 4 hours, MW, 1:25-3:20.*
- 11:15 a.m.**  
 BOT 227-5 Identification of Seed Plants of the Local Flora, 5 hours, Vest, MW, Ross 215; *lab. 6 hours, TThF, 10:10-12:05.*
- 12:20 p.m.**  
 BOT 228-6 Mycology, 5 hours, Gapter, MWF, Ross 209; *lab. 4 hours, TTh, 1:25-3:20.*

## CHEMISTRY

- 7:00 a.m.**  
 CHEM 46-1 Qualitative Analysis, 5 hours, Woerner, MWF, Ross 111; *lab. 6 hours, TTh, 2:30-5:30.*
- 8:00 a.m.**  
 CHEM 245-2 Quantitative Analysis, 5 hours, Woerner, MWF, Ross 111; *lab. 6 hours, MW, 2:30-5:30.*
- 8:00 a.m.**  
 CHEM 344-2 Theoretical Organic Chemistry, 3 hours, Schreck, MWF, Ross 35.
- 9:05 a.m.**  
 CHEM 40-3 Principles of Chemistry I, 5 hours, Fields, MTWF, Ross 111; *lab. 6 hours, MW, 2:30-5:30; class meets 9:05 and 1:25; class meets June 14-July 14.*
- 9:05 a.m.**  
 CHEM 41-3 Principles of Chemistry II, 5 hours, Fields, MTWF, Ross 111; *lab. 6 hours, MW, 2:30-5:30; class meets 9:05 and 1:25; class meets July 17-Aug. 18.*
- 9:05 a.m.**  
 CHEM 281-3 Physical Chemistry I, 5 hours, M. James, MTWF, Ross 125; *lab. 3 hours, Th, 1:25-4:25.*
- 10:10 a.m.**  
 CHEM 243-4 Organic Chemistry III, 5 hours, Schreck, MTWF, Ross 111; *lab. 3 hours, T, 2:30-5:30.*
- 11:15 a.m.**  
 CHEM 42-5 Introductory Organic Chemistry, 5 hours, Beel, MTWF, Ross 111; *lab. 3 hours, M, 2:30-5:30.*
- 11:15 a.m.**  
 CHEM 283-5 Physical Chemistry III, 5 hours, M. James, MTWF, Ross 125; *lab. 3 hours, Th, 1:25-4:25.*
- 11:15 a.m.**  
 CHEM 346-5 Seminar in Chemistry, 1 hour, Schreck, Th, Ross 111.
- 1:25 p.m.**  
 CHEM 285-7 Chemical Literature, 1 hour, Woerner, M, Ross 35.

## COMMUNICATIONS

- 7:00 a.m.**  
 COM 1-1 Elementary Composition I, 3 hours, Unassigned, MWF, Kepner 110.
- 7:00 a.m.**  
 COM 2-1 Elementary Composition II, 3 hours, Wing, MWF, Kepner 118.
- 7:00 a.m.**  
 COM 3-1 Principles of Speech, 3 hours, Longwell, TTh, Kepner 205; *class meets T, 7:00-8:50; Th, 7:00-7:50.*
- 8:00 a.m.**  
 COM 1-2 Elementary Composition I, 3 hours, Fogarty, TTh, Kepner 115; *class meets T, 8:00-9:55; Th, 8:00-8:50.*
- 8:00 a.m.**  
 COM 3-2 Principles of Speech, 3 hours, R. Crawford, MWF, Kepner 110.
- 10:10 a.m.**  
 COM 3-4 Principles of Speech, 3 hours, Longwell, MWF, Kepner 6.
- 11:15 a.m.**  
 COM 2-5 Elementary Composition II, 3 hours, Mott, MWF, Kepner 110.
- 12:20 p.m.**  
 COM 1-6 Elementary Composition I, 3 hours, Barthell, MWF, Kepner 110.
- 12:20 p.m.**  
 COM 3-6 Principles of Speech, 3 hours, Holley, MWF, Kepner 209.

## EARTH SCIENCE

- 7:00 a.m.**  
 ESCI 234-1 Geomorphology, 4 hours, Tollefson, MWF, Ross 329; *lab. 3 hours, T, 7:00-9:55.*

- 8:00 a.m.**  
 ESCI 237-2 Principles of Geology, 6 hours, Shropshire, MTWF, Ross 331; *lab. 6 hours, TTh, 1:25-4:25.*
- 9:05 a.m.**  
 ESCI 239-3 Climatology, 3 hours, Unassigned, MWF, Ross 329.
- 10:10 a.m.**  
 ESCI 232-4 Principles of Stratigraphy and Paleontology, 4 hours, Shropshire, MWF, Ross 331; *lab. 3 hours, Th, 7:00-9:55.*
- 11:15 a.m.**  
 ESCI 136-5 General Geology, 4 hours, Tollefson, MTWF, Ross 331; *field trips are required.*
- 1:25 p.m.**  
 ESCI 230-7 Principles of Meteorology, 4 hours, Unassigned, MWF, Ross 329; *lab. 2 hours, Th, 8:00-9:55, 10:10-12:05.*

## ECONOMICS

- 7:00 a.m.**  
 ECON 250-1 National Income Analysis, 3 hours, Griffiths, MWF, Carter 201.
- 8:00 a.m.**  
 ECON 102-2 Contemporary Economic Problems, 3 hours, Ozawa, MWF, Carter 201.
- 9:05 a.m.**  
 ECON 253-3 Analysis of Business Cycles, 3 hours, Griffiths, MWF, Carter 201.
- 10:10 a.m.**  
 ECON 290-4 History of Economic Thought, 3 hours, Trainer, MWF, Carter 201.
- 11:15 a.m.**  
 ECON 102-5 Contemporary Economic Problems, 3 hours, Griffiths, MWF, Carter 201.
- 1:25 p.m.**  
 ECON 330-7 Seminar in Economic History, 3 hours, Trainer, MWF, Crabbe 201.
- 2:30 p.m.**  
 ECON 212-8 International Economics, 3 hours, Griffiths, MWF, Kepner 219.
- 2:30 p.m.**  
 ECON 354-8 Seminar in Developmental Economics, 3 hours, Ozawa, MWF, Kepner 217.
- 3:35 p.m.**  
 ECON 344-9 Seminar in Government and Business, 3 hours, Trainer, MWF, Kepner 218.
- 3:35 p.m.**  
 ECON 360-9 Seminar in Money and Banking, 3 hours, Ozawa, MWF, Kepner 217.

## ENGLISH

- 7:00 a.m.**  
 ENG 259-1 Readings in English Literature from 1800 to the Present, 4 hours, Huff, MTThF, Kepner 103.
- 8:00 a.m.**  
 ENG 52-2 The Romantic Movement, 3 hours, Huff, MWF, Kepner 120.
- 8:00 a.m.**  
 ENG 111-2 Creative Writing III, 2 hours, Huff, TTh, Kepner 120.
- 8:00 a.m.**  
 ENG 325-2 Seminar in World Literature, 4 hours, Cross, MTWThF, Bishop-Lehr 206; *class meets 8:00-11:00; class meets June 14-July 14.*
- 9:05 a.m.**  
 ENG 211-3 The English Language, 4 hours, Freeman, MTWTh, Kepner 118.
- 9:05 a.m.**  
 ENG 236-3 Modern Drama Since Ibsen, 3 hours, Girault, MWF, Kepner 110.
- 9:05 a.m.**  
 ENG 260-3 Readings in American Literature to 1865, 4 hours, Gates, MTThF, Kepner 101.
- 9:05 a.m.**  
 ENG 320-3 Seminar in Victorian Literature, 5 hours, F. Frease, MTWThF, Kepner 103.
- 10:10 a.m.**  
 ENG 261-4 Readings in American Literature Since 1865, 4 hours, Boyle, MTWTh, Kepner 118.
- 10:10 a.m.**  
 ENG 313-4 Chaucer and Middle English, 5 hours, Freeman, MTWThF, Kepner 120.
- 11:15 a.m.**  
 ENG 10-5 Freshman Literature, 4 hours, Unassigned, MTWTh, Kepner 118.
- 11:15 a.m.**  
 ENG 210-5 Advanced Expository Writing, 3 hours, Huff, MWF, Kepner 103.
- 11:15 a.m.**  
 ENG 305-5 Seminar in Major American Writers I, 4 hours, Boyle, MTWTh, Kepner 101.

- ENG 315-5 Milton Seminar, 4 hours, Gates, MTThF, Kepner 120.  
12:20 p.m.
- ENG 258-6 Readings in English Literature from 700-1800, 4 hours, Freeman, MTWTh, Kepner 118.  
1:25 p.m.
- ENG 230-7 Greek and Comparative Mythology, 4 hours, Harrison, MTWTh, Kepner 118.  
2:30 p.m.
- ENG 50-8 Shakespeare, 3 hours, Unassigned, MWTh, Kepner 103.
- ENG 303-8 Seminar in Twentieth Century British and American Poetry, 3 hours, Harrison, TTh, Kepner 120; *class meets T, 2:30-4:25; Th, 2:30-3:20.*
- ENG 311-8 Seminar in English Romantic Movement, 4 hours, Harrison, MW, Kepner 120; *class meets 2:30-4:25.*

## ENGLISH EDUCATION

- 7:00 a.m.
- EED 301-1 The Teaching of Grammar (New and Traditional), 4 hours, Gates, MTThF, Kepner 120.  
10:10 a.m.
- \*EED 226-4 Literature and Materials in the Secondary School, 4 hours, Starr, MTWTh, Kepner 103.  
1:25 p.m.
- EED 228-7 The Teaching of Reading in the Secondary School, 4 hours, Starr, MTWTh, Kepner 101.  
2:30 p.m.
- EED 302-8 The Teaching of Composition, 4 hours, Starr, MTWTh, Kepner 101.

## FOREIGN LANGUAGES

- 7:00 a.m.
- FR 5-1 Intermediate French Composition, 4 hours, Graham, MTThF, Kepner 6; *must also register for FR 6 and 7.*  
8:00 a.m.
- FR 6-2 Intermediate French Conversation, 4 hours, Graham, MTThF, Kepner 6; *must also register for FR 5 and 7.*  
9:05 a.m.
- FR 7-3 Intermediate French Fiction, 4 hours, Graham, MTThF, Kepner 6; *must also register for FR 5 and 6.*  
10:10 a.m.
- GER 5-4 Intermediate German Composition, 4 hours, LaBorne, MTThF, Bishop-Lehr 201; *must also register for GER 6 and 7.*  
11:15 a.m.
- GER 6-5 Intermediate German Reading and Conversation, 4 hours, LaBorne, MTThF, Bishop-Lehr 201; *must also register for GER 5 and 7.*  
12:20 p.m.
- GER 7-6 Introduction to German Classics, 4 hours, LaBorne, MTThF, Bishop-Lehr 201; *must also register for GER 5 and 6.*

## GEOGRAPHY

- 7:00 a.m.
- GEOG 10-1 World Geography, 5 hours, Farren, MTWThF, Kepner 222.
- GEOG 221-1 Physical Geography, 5 hours, Lehrer, MTWThF, Kepner 219.  
8:00 a.m.
- GEOG 48-2 Anglo-America, 5 hours, West, MTWThF, Kepner 222.
- GEOG 244-2 Asia, 5 hours, Farren, MTWThF, Kepner 219.  
9:05 a.m.
- GEOG 360-3 Political Geography, 5 hours, West, MTWThF, Kepner 222.  
10:10 a.m.
- GEOG 226-4 Africa, 5 hours, Lehrer, MTWThF, Kepner 222.
- GEOG 250-4 Geography of Colorado, 2 hours, Pogue, TTh, Kepner 122.  
11:15 a.m.
- GEOG 218-5 Australia and the Pacific, 2 hours, Farren, TTh, Kepner 222.
- GEOG 365-5 The Soviet Union, 3 hours, K. Kearns, MWF, Kepner 222.  
12:20 p.m.
- GEOG 385-6 Seminar in Topical Geography, 3 hours, Lehrer, TTh, Kepner 222; *class meets T, 1:25-2:15; Th, 12:20-2:15.*

- 1:25 p.m.
- GEOG 238-7 South America, 3 hours, K. Kearns, MWF, Kepner 222.  
2:30 p.m.
- GEOG 380-8 Seminar in Regional Geography, 3 hours, K. Kearns, MWF, Kepner 222.

## HISTORY

- Arranged
- USH 272-70 Contemporary American Foreign Policy, 3 hours, Powers, Faculty Lounge, 903 19th Street; *class meets June 3-13; field study course to Washington, D.C., and New York; cost is about \$245 plus tuition; see page 4 for details.*  
7:00 a.m.
- WHS 261-1 The Middle Ages, 5 hours, Byerly, MTWThF, Kepner 125.
- WHS 271-1 English History, 5 hours, Rothaus, MTWThF, Kepner 217.  
8:00 a.m.
- USH 75-2 Unit Survey of United States History, 5 hours, Unassigned, MTWThF, Kepner 11.
- USH 366-2 The Era of Jacksonian Democracy: 1815-1850, 5 hours, Boeck, MTWThF, Kepner 122.
- WHS 200-2 Introduction to Historical Research, 3 hours, Unassigned, MWF, Kepner 217.  
9:05 a.m.
- USH 70-3 United States History I, 3 hours, Pogue, MWF, Kepner 122.
- USH 251-3 Colonial America: 1607-1763, 3 hours, Powers MWF, Kepner 11.
- WHS 372-3 Constitutional History of Medieval England, 3 hours, Byerly, MWF, Kepner 217.  
10:10 a.m.
- USH 250-4 History of Colorado, 3 hours, Pogue, MWF, Kepner 122.
- USH 367-4 Intellectual History of the United States, 5 hours, Boeck, MTWThF, Kepner 11.
- WHS 200-4 Introduction to Historical Research, 3 hours, Matoren, MWF, Kepner 217.  
11:15 a.m.
- USH 273-5 Diplomatic History of the United States, 5 hours, Unassigned, MTWThF, Kepner 11.
- USH 368-5 The Populist-Progressive Age: 1887-1920, 5 hours, Unassigned, MTWThF, Kepner 122.
- WHS 264-5 The Old Regime: 1600-1789, 5 hours, Rothaus, MTWThF, Kepner 125.
- WHS 334-5 European Ideologies, 4 hours, Unassigned, MTWF, Kepner 217.  
12:20 p.m.
- USH 71-6 United States History II, 3 hours, Unassigned, MWF, Kepner 11.
- USH 363-6 Emergence of a New Nation: 1763-1815, 5 hours, Powers, MTWThF, Kepner 122.
- WHS 268-6 Contemporary World History, 5 hours, Matoren, MTWThF, Kepner 125.
- WHS 330-6 History of Nationalism, 5 hours, Unassigned, MTWThF, Kepner 217.  
1:25 p.m.
- USH 265-7 Contemporary United States History, 3 hours, Unassigned, MWF, Kepner 122.
- WHS 30-7 World History I, 4 hours, Matoren, MTWTh, Kepner 217.
- WHS 399-7 Historiography, 3 hours, Boeck-Byerly-Rothaus, Th, Kepner 125; *class meets 1:25-4:25.*

## HUMANITIES

- 8:00 a.m.
- HUM 1-2 Introduction. The Greek and Roman Periods, 3 hours, Unassigned, MWF, Carter 304.
- HUM 220-2 Greek Culture, 15 hours, Cross, MTWThF, Bishop-Lehr 206; *class meets MTWThF, 8:00-11:00 and MTWTh, 1:25-2:15 with ENG 230-7; on campus June 14-July 14; traveling July 17-August 15; Students who wish to study Greek Culture without the European trip may enroll in ENG 325 and ENG 230 as listed elsewhere, studying with the HUM 220 group for the first five weeks of the quarter. See page 4 for details.*  
9:05 a.m.
- HUM 2-3 The Middle Ages and the Renaissance, 3 hours, Unassigned, MWF, Carter 304.  
12:20 p.m.
- HUM 3-6 The Eighteenth to the Twentieth Century, 3 hours, Mott, MWF, Carter 304.

## JOURNALISM

1:25 p.m.

- JOUR 201-7 Sponsorship of the School Newspaper and Annual, 3 hours, Hartman-Cleere-Wooley, MTWThF, Kepner 115; *class meets MTWThF, 1:25-5:00; class meets June 19-30.*

## MATHEMATICS

7:00 a.m.

- MATH 1-1 Basic Mathematics I, 3 hours, Eggert, TTh, Ross 305; *class meets 7:35-8:50.*  
 MATH 24-1 College Algebra, 5 hours, Raghunandan, MTWThF, Ross 302.  
 MATH 31-1 Calculus with Analytic Geometry I, 5 hours, Schweers, MTWThF, Ross 304; *class meets 7:00 and 11:15; class meets June 14-July 14.*  
 MATH 32-1 Calculus with Analytic Geometry II, 5 hours, Schweers, MTWThF, Ross 304; *class meets 7:00 and 11:15; class meets July 17-August 18.*  
 MATH 203-1 Structure of Numbers, 3 hours, R. Johnson, MWF, Ross 305.  
 MATH 232-1 Advanced Calculus I, 4 hours, D. Schmidt, MTWF, Ross 303.

8:00 a.m.

- MATH 101-2 Basic Mathematic Logic, 3 hours, Cavanagh, MWF, Ross 305.  
 MATH 122-2 Introduction to Modern Algebra I, 4 hours, Tolar, MTWTh, Ross 304.  
 MATH 323-2 Modern Algebra I, 5 hours, R. Johnson, MTWThF, Ross 303.  
 MATH 324-2 Modern Algebra II, 5 hours, Elliott, MTWThF, Ross 302.

9:05 a.m.

- MATH 1-3 Basic Mathematics I, 3 hours, Schweers, MWF, Ross 305.  
 MATH 2-3 Basic Mathematics II, 3 hours, Popejoy, TTh, Ross 305; *class meets 9:05-10:20.*  
 MATH 222-3 Basic Matrix Algebra, 5 hours, Raghunandan, MTWThF, Ross 303.  
 MATH 340-3 Introduction to Topology, 4 hours, D. Schmidt, MTWF, Ross 302.  
 MATH 343-3 Modern Geometry I, 5 hours, Fisch, MTWThF, Ross 304.

10:10 a.m.

- MATH 102-4 Theory of Sets, 3 hours, Tolar, MWF, Ross 305.  
 MATH 225-4 Linear Algebra, 4 hours, Eggert, MTWF, Ross 304.  
 MATH 310-4 Seminar in Mathematics, 1 hour, D. Schmidt, Th, Ross 302.

11:15 a.m.

- MATH 25-5 Plane Trigonometry, 5 hours, Eggert, MTWThF, Ross 34.  
 MATH 233-5 Advanced Calculus II, 4 hours, D. Schmidt, MTWF, Ross 303.  
 MATH 281-5 Introduction to Computer Mathematics, 4 hours, Anders, MWF, Ross 302; *lab. 2 hours arranged.*

12:20 p.m.

- MATH 33-6 Calculus with Analytic Geometry III, 5 hours, Tolar, MTWThF, Ross 303.  
 MATH 326-6 Theory of Rings, 4 hours, Elliott, MTWF, Ross 304.

1:25 p.m.

- MATH 142-7 Introduction to Modern Geometry II, 4 hours, Popejoy, MTWTh, Ross 303.  
 MATH 282-7 Computer Mathematics I, 4 hours, Anders, MWF, Ross 302; *lab. 2 hours arranged.*  
 MATH 344-7 Modern Geometry II, 5 hours, Fisch, MTWThF, Ross 304.

## MATHEMATICS EDUCATION

10:10 a.m.

- MED 374-4 Seminar in Teaching Secondary Mathematics, 4 hours, Cavanagh, MTWF, Ross 307.

11:15 a.m.

- MED 364-5 History of Mathematics II, 3 hours, R. Johnson, MWF, Ross 305.

12:20 p.m.

- MED 373-6 Problems in the Teaching of Secondary Mathematics, 4 hours, Popejoy, MTWTh, Ross 305.

1:25 p.m.

- MED 278-7 Mathematics Teachers' Workshop II, 3 hours, May, MTWThF, Ross Lecture 104; *class meets 1:25-4:25; class meets July 31-August 11; elementary teachers.*  
 MED 372-7 Curriculum in Secondary School Mathematics, 5 hours, Cavanagh, MTWThF, Ross 305.

## PHYSICS

7:00 a.m.

- PHYS 265-1 Mechanics II, 3 hours, Fry, MWF, Ross 35.

8:00 a.m.

- PHYS 60-2 Introductory Physics—Mechanics, 4 hours, Aas, MTWThF, Ross 34; *lab. 4 hours, T, 10:10-12:05; Th, 1:25-3:20; class meets WThF, 8:00; MTW, 12:20; class meets June 14-July 14.*  
 PHYS 61-2 Introductory Physics—Heat, Sound, and Light, 4 hours, Aas, MTWThF, Ross 34; *lab. 4 hours, T, 10:10-12:05; Th, 1:25-3:20; class meets WThF, 8:00; MTW, 12:20; class meets July 17-August 18.*

9:05 a.m.

- PHYS 161-3 Elementary Photography, 3 hours, Aas, MW, Ross 34; *lab. 2 hours, Th, 10:10-12:05.*

10:10 a.m.

- PHYS 65-4 General Physics—Mechanics, 5 hours, Fry, MTWF, Ross 35; *lab. 2 hours, Th, 8:00-9:55.*  
 PHYS 262-4 Electronics, 4 hours, Fiel, MWF, Ross 34; *lab. 3 hours, Th, 1:25-4:25.*

12:20 p.m.

- PHYS 166-6 Electricity and Magnetism I, 4 hours, Fry, MTWF, Ross 35.

1:25 p.m.

- PHYS 63-7 Radiation Physics, 3 hours, Fiel, MWF, Ross 34.

## POLITICAL SCIENCE

7:00 a.m.

- PSCI 40-1 National Government of the United States, 5 hours, Knapp, MTWThF, Kepner 218.

8:00 a.m.

- PSCI 40-2 National Government of the United States, 5 hours, Unassigned, MTWThF, Kepner 218.

- PSCI 377-2 Constitutional Law, 5 hours, Christensen, MTWThF, Kepner 103.

9:05 a.m.

- PSCI 210-3 Government and Politics of Asia, 4 hours, Ahn, MTWF, Kepner 218.

- PSCI 218-3 Russian-American Relations, 3 hours, Knapp, TTh, Kepner 218; *class meets T, 10:10-11:00; Th, 9:05-11:00.*

10:10 a.m.

- PSCI 171-4 State and Local Government, 5 hours, Christensen, MTWThF, Kepner 110.

11:15 a.m.

- PSCI 172-5 Problems in United States Government, 3 hours, Unassigned, MWF, Kepner 218.

12:20 p.m.

- PSCI 212-6 The Politics of the Developing Areas, 4 hours, Ahn, MTThF, Kepner 218.

- PSCI 379-6 Seminar in International Politics, 3 hours, Knapp, W, Kepner 218; *class meets 12:20-3:20.*

1:25 p.m.

- PSCI 211-7 Government and Politics of Latin America, 4 hours, Ahn, MTThF, Kepner 218.

## SCIENCE

8:00 a.m.

- SCI 205-2 Physical Science Concepts, 4 hours, Beel, MTWF, Ross Lecture 107.

9:05 a.m.

- SCI 5-3 Earth Science, 3 hours, Rowland, MWF, Ross Lecture 105; *juniors and seniors are urged to take a substitute for this course.*

- SCI 379-3 Philosophy of Science, 3 hours, K. Olson, MWF, Ross 357.

11:15 a.m.

- SCI 4-5 Biological Science, 3 hours, Plakke, MWF, Ross Lecture 106; *juniors and seniors are urged to take a substitute for this course.*

1:25 p.m.

- SCI 3-7 Physical Science, 3 hours, M. James, MWF, Ross Lecture 107.

- SCI 204-7 Common Minerals and Rocks, 3 hours, Tollefson, MTWThF, Ross 331; *class meets 1:25-4:25; class meets July 17-28; field trip fee required.*
- SCI 206-7 Conservation of Natural Resources, 4 hours, Glidden-Stamper, MTWThF, Ross Lecture 105; *class meets 1:25-5:30; class meets June 19-30; field trip fee required.*
- SCI 207-7 Aerospace Workshop, 3 hours, K. Olson, MTWThF, Ross Lecture 105; *class meets 1:25-4:25; class meets July 10-21.*
- SCI 208-7 Elementary Science Workshop, 3 hours, Crockett-Neal, MTWThF, Ross 357-358; *class meets 1:25-4:25; class meets July 24-August 4.*
- SCI 376-7 History of Science, 3 hours, Sund, MWF, Ross 224. **2:30 p.m.**
- SCI 330-8 Graduate Readings Course in Science, 4 hours, Glidden-Staff, MTWF, Ross Lecture 107.

## SCIENCE EDUCATION

- 7:00 a.m.**
- SCED 374-1 Instructional Problems in Teaching Science, 3 hours, Unassigned, MWF, Ross 358.
- 8:00 a.m.**
- \*SCED 270-2 Teaching Science in the Elementary School, 3 hours, Crockett, MW, Ross 300; *lab. 2 hours, Th, 1:25-3:20, 3:35-5:30.*
- SCED 373-2 Research in Science Education, 3 hours, K. Olson, MWF, Ross 357.
- 9:05 a.m.**
- SCED 277-3 Test Construction in Science, 3 hours, Glidden, MWF, Ross Lecture 107.
- 10:10 a.m.**
- SCED 371-4 Science Curriculum in the Elementary School, 3 hours, Neal, MWF, Ross 357.
- 11:15 a.m.**
- SCED 278-5 Instructional Materials in the Teaching of Science, 4 hours, Crockett, MWF, Ross 358; *lab. 2 hours, Th, 10:10-12:05.*
- SCED 372-5 Science Curriculum in the Secondary School, 3 hours, Sund, MWF, Ross 357.
- SCED 375-5 Development of Scientific Inquiry Abilities of Children Through Science, 4 hours, Neal, MTWF, Ross 329.
- 12:20 p.m.**
- SCED 378-6 Science Education Seminar, 1 hour, K. Olson, W, Ross 357.
- 2:30 p.m.**
- \*SCED 270-8 Teaching Science in the Elementary School, 3 hours, Tillery, MW, Ross 300; *lab. 2 hours, T, 1:25-3:20, 3:35-5:30.*
- SCED 371-8 Science Curriculum in the Elementary School, 3 hours, Sund, MWF, Ross 301.

## SOCIAL SCIENCES

- 8:00 a.m.**
- SS 221-2 Cultural Background of Western-Soviet Russian Relations, 15 hours, Arnold-Ellinger, MTWThF, Kepner 125; *European study tour; class meets MTWThF, 8:00-11:15, on campus for first five weeks; class travels 28 days in Europe; round trip via jet from Denver; tour cost \$1225 Greeley to Greeley; tuition and living expenses on campus additional; class returns August 15; see page 4 for details.*
- 9:05 a.m.**
- SS 200-3 Social Philosophy, 3 hours, Willoughby, MWF, Crabbe 201.
- 10:10 a.m.**
- SS 82-4 American Life and Institutions, 3 hours, Unassigned, MWF, Kepner 218.
- 1:25 p.m.**
- SS 330-7 Graduate Readings in the Social Sciences, 4 hours, Unassigned, TTh, Kepner 122; *class meets 1:25-3:20.*

## SOCIOLOGY

- 7:00 a.m.**
- SOC 331-1 Seminar in Social Communication, 3 hours, Willoughby, MWF, Kepner 11.
- 8:00 a.m.**
- SOC 104-2 Marriage and the Family, 3 hours, Rubenstein, 3 hours, TTh, Crabbe 201; *class meets T, 8:00-9:55; Th, 8:00-8:50.*

\*These classes are open only to those students who have been formally admitted to the Advanced Teacher Education Program.

- SOC 205-2 Soviet Society Today, 3 hours, Quammen, MWF, Crabbe 201.
- 10:10 a.m.**
- SOC 50-4 Principles of Sociology, 5 hours, Quammen, MTWThF, Crabbe 201.
- 11:15 a.m.**
- SOC 291-5 Social Psychology, 3 hours, Willoughby, MWF, Crabbe 201.
- SOC 304-5 Seminar—Marriage, 3 hours, Rubenstein, TTh, Crabbe 201; *class meets T, 11:15-1:10; Th, 11:15-12:05.*
- 12:20 p.m.**
- SOC 102-6 Criminology, 4 hours, Quammen, MTThF, Kepner 219.
- 2:30 p.m.**
- SOC 207-3 Collective Behavior, 3 hours, Willoughby, MWF, Kepner 125.

## SPEECH AND THEATRE ARTS

- 7:00 a.m.**
- SP 290-1 Persuasion, 3 hours, Toussaint, MWF, Kepner 209.
- 8:00 a.m.**
- SP 294-2 Critical Thinking, 4 hours, Toussaint, MTThF, Kepner 209.
- 9:05 a.m.**
- SP 16-3 Voice and Diction, 4 hours, Ahlberg, MTThF, Kepner 209.
- SP 220-3 Stage Costuming, 4 hours, Unassigned, MTWTh, Frasier 69.
- SP 350-3 Rhetorical Theory, 4 hours, Holley, MTThF, Kepner 205.
- 10:10 a.m.**
- SP 115-4 Beginning Characterization, 3 hours, Willcoxon, MWF, Frasier 71; *summer theatre members and permission of instructor.*
- SP 218-4 Discussion Techniques, 4 hours, R. Crawford, MTWF, Kepner 209.
- SP 280-4 American Public Address, 4 hours, Toussaint, MTWTh, Kepner 205.
- 11:15 a.m.**
- SP 200-5 Techniques of Play Direction, 3 hours, Willcoxon, MWF, Frasier 71; *summer theatre members and permission of instructor.*
- SP 213-5 Advanced Staging Techniques, 4 hours, Wolfe, MTWTh, Frasier 171; *summer theatre members and permission of instructor.*
- SP 275-5 Phonetics, 3 hours, Ahlberg, MWF, Kepner 209.
- 12:20 p.m.**
- SP 270-6 The Psychology of Speech, 4 hours, R. Crawford, MTWF, Kepner 205.
- 1:25 p.m.**
- SP 116-7 Beginning Play Direction, 4 hours, Girault, MTWTh, Frasier 71.
- SP 228-7 Television in Education, 4 hours, Jamison, MW, Bishop-Lehr 228; *lab. TTh, 1:25-3:20.*
- SP 248-7 Workshop in Speech Education: Forensics, Theatre, Interpretation, 3 hours, Crawford-Longwell-Willcoxon, MTWThF, Kepner 209; *class meets 1:30-4:30; June 26-July 7.*
- 2:30 p.m.**
- SP 265-8 Advanced Scene Design, 3 hours, Wolfe, MWF, Frasier 171; *summer theatre members and permission of instructor.*
- 3:35 p.m.**
- SP 208-9 Introduction to Television Production, 4 hours, Jamison, MW, Bishop-Lehr 228; *lab. TTh, 3:35-5:30.*
- SP 212-9 Summer Theatre Workshop III, 5 hours, Wolfe-Willcoxon, MTWThF, Frasier 71; *summer theatre members and permission of instructor.*
- 4:40 p.m.**
- SP 315-10 Theatre Production in the High School, 3 hours, Girault, MWF, Frasier 71.

## ZOOLOGY

- 7:00 a.m.**
- ZOO 112-1 Mammalian Anatomy, 5 hours, Plakke, MWF, Ross Lecture 106; *lab. 4 hours, MW, 1:25-3:20.*
- ZOO 114-1 Ornithology, 3 hours, Stamper, MWF, Ross 224; *field trips are required.*
- 8:00 a.m.**
- ZOO 11-2 General Zoology—Invertebrate, 5 hours, Stamper, MWF, Ross Lecture 106; *lab. 4 hours, TTh, 8:00-9:55.*



- ZOO 117-2 Human Physiology, 5 hours, Rich, MWF, Ross 224; lab. 4 hours, TTh, 10:10-12:05.  
**9:05 a.m.**  
 ZOO 318-3 Vertebrate Histology, 5 hours, G. Schmidt, MWF, Ross 204; lab. 4 hours, TTh, 10:10-12:05.  
**1:25 p.m.**  
 ZOO 218-7 Animal Microscopic Techniques, 3 hours, G. Schmidt, MWF, Ross 209; class meets 1:25-3:20.  
 ZOO 219-7 Animal Ecology, 5 hours, B. Thomas, TTh, Ross 203; lab. 6 hours, TTh, 2:30-5:30.

## SCHOOL OF EDUCATION EDUCATION

- 7:00 a.m.**  
 \*ED 101-1 Basic Concepts of Education, 5 hours, Ninemires, MTWThF, Kepner 214; ATE.  
 ED 206-1 Audio-Visual Materials in Education, 4 hours, Wood, MWF, Carter 202; lab. 2 hours, arranged.  
 \*ED 295-1 Philosophy of Education, 3 hours, Unassigned, MWF, Frasier 249; ATE.  
 ED 343-1 School Finance, 3 hours, Barnhart, MWF, Kepner 119.  
 ED 360-1 Professional Roles and Responsibilities, 2 hours, Morrison, TTh, Kepner 204.  
 ED 363-1 Curriculum in the Junior High School, 3 hours, Stoffler, MWF, Kepner 204.  
 ED 366-1 Foundations for Curriculum Development, 3 hours, Broderius, Frasier 148.  
**8:00 a.m.**  
 \*ED 101-2 Basic Concepts of Education, 5 hours, Sanderson, MTWThF, Kepner 214; ATE.  
 \*ED 101-22 Basic Concepts of Education, 5 hours, Ninemires, MTWThF, Kepner 214; ATE.  
 ED 206-2 Audio-Visual Materials in Education, 4 hours, Wood, MWF, Carter 202; lab. 2 hours, arranged.  
 ED 208-2 Local Production of Audio-Visual Instructional Materials, 3 hours, Bowman, TTh, Carter 202; class meets T, 8:00-9:55; Th, 8:00-8:50.  
 \*ED 295-2 Philosophy of Education, 3 hours, Unassigned, TTh, Frasier 249; ATE; class meets T, 8:00-9:55; Th, 8:00-8:50.  
 ED 348-2 School Law II, 3 hours, Partridge, MWF, Kepner 119.  
 ED 351-2 Supervision of Student Teachers, 3 hours, Van Maanen, MWF, Frasier 169.  
 ED 366-2 Foundations for Curriculum Development, 3 hours, Dunwell, MWF, Frasier 249.  
 ED 391-2 Higher Education in the United States, 3 hours, Hogan, TTh, Frasier 169; class meets T, 8:00-9:55; Th, 8:00-8:50.  
 ED 443-2 Seminar in Administration, 3 hours, Partridge, TTh, Kepner 16; class meets 8:00-9:30.  
 ED 443-22 Seminar in Administration, 3 hours, Jardine, TTh, Kepner 16; class meets 8:00-9:30.  
**9:05 a.m.**  
 ED 207-3 Audio-Visual Administration Workshop, 3 hours, Donald Seager, MWF, Carter 202.  
 ED 317-3 Remedial Reading in the Secondary School, 4 hours, Unassigned, TTh, Kepner 206; class meets TTh, 9:05-11:00; graduates only.  
 ED 341-3 Philosophy and Techniques of Public Relations, 3 hours, Hartman, TTh, Carter 201; class meets T, 10:10-11:00; Th, 9:05-11:00.  
 ED 344-3 School Plant Planning, 3 hours, Luketich, MWF, Kepner 119.  
 ED 352-3 Organization of Student Teaching Programs, 3 hours, Van Maanen, MWF, Frasier 169.  
 ED 363-3 Curriculum in the Junior High School, 3 hours, Stoffler, MWF, Guggenheim 201.  
 ED 367-3 Advanced Curriculum Concepts, 3 hours, Broderius, MWF, Kepner 204.  
 ED 368-3 Seminar in Curriculum and Instruction (Improvement of Instructional Programs), 3 hours, Morrison, TTh, Frasier 148; class meets T, 10:10-11:00; Th, 9:05-11:00.  
 ED 395-3 Philosophy of Education, 3 hours, D. Turner, MWF, Frasier 249.  
 ED 461-3 Philosophical Foundations of Education, 3 hours, Bothell, TTh, Frasier 249; class meets T, 10:10-11:00; Th, 9:05-11:00.  
 ED 494-3 College Administration, 3 hours, Hillway, MWF, Frasier 148.

\*These classes are open only to those students who have been formally admitted to the Advanced Teacher Education Program.

- 10:10 a.m.**  
 ED 206-4 Audio-Visual Materials in Education, 4 hours, Wood, MWF, Carter 202; lab 2 hours, arranged.  
 \*ED 295-4 Philosophy of Education, 3 hours, Unassigned, MWF, Frasier 169; ATE.  
 ED 355-4 Organization, Administration, and Supervision of the Elementary School, 4 hours, Barnhart, TTh, Kepner 16; class meets TTh, 10:10-12:05.  
 ED 365-4 Secondary School Organization, Administration, and Supervision, 4 hours, Luketich, TTh, Kepner 119; class meets TTh, 10:10-12:05.  
 ED 368-4 Seminar in Curriculum and Instruction (Individual Study), 3 hours, Dunwell, MWF, Frasier 148.  
 ED 461-4 Philosophical Foundations of Education, 3 hours, Bothell, MWF, Frasier 249.  
 ED 462-4 Psychological Foundations of Education, 3 hours, Meier, MWF, Gunter Annex 103.  
 ED 463-4 Sociological Foundations of Education, 3 hours, D. Turner, MWF, Kepner 119.  
**11:15 a.m.**  
 ED 206-5 Audio-Visual Materials in Education, 4 hours, Donald Seager, MWF, Carter 202; lab 2 hours, arranged.  
 \*ED 260-5 Professional Roles and Responsibilities, 2 hours, Broderius, TTh, Frasier 169.  
 \*ED 295-5 Philosophy of Education, 3 hours, Unassigned, TTh, Frasier 148; ATE; class meets T, 11:15-1:10; Th, 11:15-12:05.  
 ED 296-5 History of Education in the United States, 3 hours, Bothell, MWF, Frasier 249.  
 ED 361-5 Secondary Instruction, 3 hours, Dunwell, MWF, Frasier 148.  
 ED 364-5 Seminar in Junior High School Instruction, 3 hours, Stoffler, TTh, Kepner 204; class meets T, 11:15-1:00; Th, 11:15-12:05.  
 ED 393-5 The Junior and Community College, 3 hours, Hogan, TTh, Frasier 249; class meets T, 11:15-1:10; Th, 11:15-12:05.  
 ED 493-5 The College and University Curriculum, 3 hours, Hogan, MWF, Kepner 204.  
**12:20 p.m.**  
 ED 308-6 Production of Photographic Teaching Materials, 3 hours, Bowman, TTh, Carter 202; class meets T, 1:25-2:15; Th, 12:20-2:15.  
 ED 342-6 School Administration—Federal, State, Local, 3 hours, Jardine, MWF, Kepner 214.  
 ED 342-26 School Administration—Federal, State, Local, 3 hours, Moss, MWF, Kepner 214.  
 ED 368-6 Seminar in Curriculum and Instruction (Current Trends and Issues), 3 hours, Morrison, MWF, Kepner 204.  
**1:25 p.m.**  
 ED 200-7 Education Workshop: Elementary School Modern Mathematics, 3 hours, Kramer, MTWThF, Kepner 214; class meets 1:25-5:30; class meets June 14-22; class also meets Saturday, June 17, 9:00-12:00.  
 ED 200-27 Education Workshop: Elementary School Reading, 3 hours, Lane, MTWThF, Kepner 214; class meets 1:25-4:25; class meets June 26-July 7; class also meets Saturday, July 1, 9:00-12:00.  
 ED 237-7 Comparative Education, 3 hours, D. Turner, MWF, Kepner 119.  
 ED 347-7 School Purchasing and Warehousing, 4 hours, Unassigned, TTh, Kepner 119; class meets 1:25-3:20.  
 ED 420-7 Seminar in Research, 0 hours, Ritter, M, Kepner 204; class meets 1:25-4:25.  
 ED 443-7 Seminar in Administration, 3 hours, Moss, M, Kepner 16; class meets 1:25-4:25.  
 ED 443-27 Seminar in Administration, 3 hours, Moss, T, Kepner 16; class meets 1:25-4:25.  
 ED 444-7 Advanced Seminar in Administration, 3 hours, Jardine, M, Kepner 16; class meets 1:25-4:25.

## ELEMENTARY EDUCATION

### Arranged

- \*ED 139-70 Introduction to Student Teaching in the Elementary School, 2 hours, Bruce, Arranged, Bishop-Lehr 122; ATE; four hours per week and one conference hour per week arranged.  
 \*ED 139-71 Introduction to Student Teaching in the Elementary School, 2 hours, Trigg, Arranged, Bishop-Lehr 124; ATE; four hours per week and one conference hour per week arranged.

\*These classes are open only to those students who have been formally admitted to the Advanced Teacher Education Program.

- \*ED 139-72 Introduction to Student Teaching in the Elementary School, 2 hours, Unassigned, Arranged, Bishop-Lehr 126; ATE; four hours per week and one conference hour per week arranged.
- \*ED 139-73 Introduction to Student Teaching in the Elementary School, 2 hours, Gunning, Arranged, Bishop-Lehr 224; ATE; four hours per week and one conference hour per week arranged.
- \*ED 139-74 Introduction to Student Teaching in the Elementary School, 2 hours, Unassigned, Arranged, Bishop-Lehr 222; ATE; four hours per week and one conference hour per week arranged.
- \*ED 139-75 Introduction to Student Teaching in the Elementary School, 2 hours, Unassigned, Arranged, Bishop-Lehr 220; ATE; four hours per week and one conference hour per week arranged.
- \*ED 139-76 Introduction to Student Teaching in the Elementary School, 2 hours, Unassigned, Arranged, Bishop-Lehr 218; ATE; four hours per week and one conference hour per week arranged.  
7:00 a.m.
- \*ED 109-1 Teaching Handwriting and Spelling in the Elementary School, 2 hours, Trigg, TTh, Ross 300; ATE.
- \*ED 223-1 Reading in the Intermediate Grades, 3 hours, Barney, MWF, Kepner 105; ATE; undergraduates only.
- ED 309-1 Supervision of Handwriting and Spelling in the Elementary School, 2 hours, Unassigned, TTh, Kepner 206; graduates only.
- ED 310-1 Supervision of Instruction in Reading in the Elementary School, 3 hours, Hunn, MWF, Kepner 9; graduates only.
- ED 311-1 Supervision of Instruction in English in the Elementary School, 3 hours, Mosbo, MWF, Kepner 206; graduates only.
- ED 320-1 Analysis of Reading Methods, 3 hours, Lane, MWF, Kepner 210; graduates only; doctoral students take ED 320-4; prerequisites ED 110, 310 or permission of instructor.
- ED 324-1 Remedial Reading in the Elementary School (Theory), 2 hours, Unassigned, TTh, Kepner 105; graduates only.
- ED 325-1 Remedial Reading Case Study, 3 hours, Unassigned, T, Kepner 210; permission of instructor.
- ED 326-1 Remedial Reading Internship, 3 hours, Triplett, Th, Kepner 210; permission of instructor.  
8:00 a.m.
- \*ED 115-2 Literature in the Elementary School, 2 hours, Unassigned, TTh, Ross 300; ATE.
- \*ED 223-2 Reading in the Intermediate Grades, 3 hours, Barney, MWF, Kepner 105; graduates only.
- ED 309-2 Supervision of Handwriting and Spelling in the Elementary School, 2 hours, Unassigned, TTh, Kepner 206; graduates only.
- ED 310-2 Supervision of Instruction in Reading in the Elementary School, 3 hours, Lane, MWF, Kepner 9; graduates only.
- ED 311-2 Supervision of Instruction in English in the Elementary School, 3 hours, Mosbo, MWF, Kepner 206; graduates only.
- ED 320-2 Analysis of Reading Methods, 3 hours, Claybaugh, MWF, Kepner 210; graduates only; doctoral students take ED 320-4; prerequisites ED 110, 310 or permission of instructor.
- ED 322-2 Seminar in Elementary School Mathematics, 3 hours, Clark, TTh, Kepner 210; class meets T, 8:00-9:55; Th, 8:00-8:50; graduates only; doctoral students take ED 322-5; prerequisites ED 112, 312 or permission of instructor.
- ED 323-2 Seminar in Elementary School Social Studies, 3 hours, Kelly, TTh, Kepner 9; class meets T, 8:00-9:55; Th, 8:00-8:50; doctoral students only; prerequisite ED 113, 313 or permission of instructor.
- ED 325-2 Remedial Reading Case Study, 3 hours, Unassigned, T, Kepner 105; permission of instructor.
- ED 327-2 Reading Clinic Internship, 3 hours, Gagon, Th, Kepner 105; permission of instructor.  
9:05 a.m.
- \*ED 112-3 Improvement of Instruction in Mathematics in the Elementary School, 3 hours, Unassigned, TTh, Kepner 9; ATE; class meets T, 10:10-11:00; Th, 9:05-11:00.
- \*ED 227-3 Kindergarten Education, 3 hours, Lewis, MWF, Kepner 9; ATE.
- ED 310-3 Supervision of Instruction in Reading in the Elementary School, 3 hours, Hunn, MWF, Ross 300; graduates only.
- ED 311-3 Supervision of Instruction in English in the Elementary School, 3 hours, Nebel, MWF, Kepner 210; graduates only.
- ED 312-3 Supervision of Instruction in Mathematics in the Elementary School, 3 hours, Unassigned, MWF, Kepner 105; graduates only.
- ED 313-3 Supervision of Instruction in Social Studies in the Elementary School, 3 hours, Lowry, MWF, Kepner 206; graduates only.
- ED 321-3 Seminar in Elementary School English, 3 hours, Nebel, TTh, Kepner 210; doctoral students only; prerequisites ED 111, 311 or permission of instructor; class meets T, 10:10-11:00; Th, 9:05-11:00.
- ED 324-3 Remedial Reading in the Elementary School (Theory), 2 hours, Gagon, TTh, Kepner 105; graduates only.  
10:10 a.m.
- \*ED 113-4 Improvement of Instruction in Social Studies in the Elementary School, 3 hours, Barney, MWF, Ross 300; ATE.
- ED 310-4 Supervision of Instruction in Reading in the Elementary School, 3 hours, Lane, MWF, Kepner 9; graduates only.
- ED 312-4 Supervision of Instruction in Mathematics in the Elementary School, 3 hours, Unassigned, MWF, Kepner 105; graduates only.
- ED 313-4 Supervision of Instruction in Social Studies in the Elementary School, 3 hours, Lowry, MWF, Kepner 206; graduates only.
- ED 320-4 Analysis of Reading Methods, 3 hours, Claybaugh, MWF, Kepner 210; doctoral students only; prerequisites ED 110, 310 or permission of instructor.
- ED 324-4 Remedial Reading in the Elementary School (Theory), 2 hours, Gagon, TTh, Kepner 105; graduates only.  
11:15 a.m.
- \*ED 110-5 Improvement of Instruction in Reading in the Elementary School, 3 hours, Unassigned, MWF, Kepner 9; ATE.
- \*ED 111-5 Improvement of Instruction in English in the Elementary School, 3 hours, Benson, TTh, Ross 300; ATE; class meets T, 11:15-1:10; Th, 11:15-12:05.
- \*ED 112-5 Improvement of Instruction in Mathematics in the Elementary School, 3 hours, Unassigned, TTh, Kepner 105; ATE; class meets T, 11:15-1:10; Th, 11:15-12:05.
- \*ED 222-5 Reading in the Primary Grades, 3 hours, Lewis, MWF, Kepner 210; graduates only.
- ED 310-5 Supervision of Instruction in Reading in the Elementary School, 3 hours, Hunn, MWF, Ross 300; graduates only.
- ED 312-5 Supervision of Instruction in Mathematics in the Elementary School, 3 hours, Clark, MWF, Kepner 105; graduates only.
- ED 314-5 The Elementary School Curriculum, 3 hours, Unassigned, MWF, Kepner 206; graduates only.
- ED 315-5 Supervision of Instruction in Children's Literature, 2 hours, Lewis, TTh, Kepner 206; graduates only.
- ED 322-5 Seminar in Elementary School Mathematics, 3 hours, Clark, TTh, Kepner 210; doctoral students only; prerequisites ED 112, 312 or permission of instructor; class meets T, 11:15-1:10; Th, 11:15-12:05.
- ED 323-5 Seminar in Elementary School Social Studies, 3 hours, Lowry, TTh, Kepner 9; graduates only; doctoral students take ED 323-2; prerequisites ED 113, 313 or permission of the instructor; class meets T, 11:15-1:10; Th, 11:15-12:05.  
12:20 p.m.
- \*ED 110-6 Improvement of Instruction in Reading in the Elementary School, 3 hours, Unassigned, MWF, Kepner 9; ATE.
- \*ED 111-6 Improvement of Instruction in English in the Elementary School, 3 hours, Benson, TTh, Ross 300; ATE; class meets T, 1:25-2:15; Th, 12:20-2:15.
- \*ED 113-6 Improvement of Instruction in Social Studies in the Elementary School, 3 hours, Gunning, MWF, Ross 300; ATE.
- ED 314-6 The Elementary School Curriculum, 3 hours, Unassigned, MWF, Kepner 103; graduates only.
- ED 315-6 Supervision of Instruction in Children's Literature, 2 hours, Lewis, TTh, Kepner 206; graduates only.

\*These classes are open only to those students who have been formally admitted to the Advanced Teacher Education Program.

\*These classes are open only to those students who have been formally admitted to the Advanced Teacher Education Program.

- ED 320-6 Analysis of Reading Methods, 3 hours, Claybaugh, MWF, Kepner 210; *graduates only; doctoral students take ED 320-4; prerequisites ED 110, 310 or permission of instructor.*
- ED 321-6 Seminar in Elementary School English, 3 hours, Nebel, TTh, Kepner 210; *graduates only; doctoral students take ED 321-3; prerequisites ED 111, 311 or permission of instructor; class meets T, 1:25-2:15; Th, 12:20-2:15. 1:25 p.m.*
- \*ED 109-7 Teaching Handwriting and Spelling in the Elementary School, 2 hours, Unassigned, TTh, Kepner 105; ATE.
- \*ED 222-7 Reading in the Primary Grades, 3 hours, Bruce, MWF, Kepner 210; ATE; *undergraduates only.*
- ED 313-7 Supervision of Instruction in Social Studies in the Elementary School, 3 hours, Barney, MWF, Kepner 9; *graduates only.*
- ED 314-7 The Elementary School Curriculum, 3 hours, Unassigned, MWF, Kepner 206; *graduates only.*

### COLLEGE STUDENT PERSONNEL WORK

#### Arranged

- CSPW 358-60 Internship in College Student Personnel Work, 2 hours, Nelson, Arranged; *lab. 6 hours per week.*
- CSPW 358-61 Internship in College Student Personnel Work, 2 hours, Oppelt, Arranged; *lab. 6 hours per week.*
- CSPW 358-62 Internship in College Student Personnel Work, 2 hours, Quinlan, Arranged; *lab. 6 hours per week.*
- CSPW 358-63 Internship in College Student Personnel Work, 2 hours, Stuckey, Arranged; *lab. 6 hours per week.*
- CSPW 358-64 Internship in College Student Personnel Work, 2 hours, Tanner, Arranged; *lab. 6 hours per week.*
- CSPW 358-65 Internship in College Student Personnel Work, 2 hours, Miller, Arranged; *lab. 6 hours per week.*
- CSPW 358-66 Internship in College Student Personnel Work, 2 hours, Bowen, Arranged; *lab. 6 hours per week.*
- CSPW 358-67 Internship in College Student Personnel Work, 2 hours, Kinnick, Arranged; *lab. 6 hours per week.*
- CSPW 358-68 Internship in College Student Personnel Work, 2 hours, Collins, Arranged; *lab. 6 hours per week. 8:00 a.m.*
- CSPW 351-2 Philosophy and History of College Student Personnel Work, 3 hours, Oppelt, MWF, Kepner 204.
- CSPW 453-2 Research and Evaluation in College Student Personnel Work, 3 hours, Quinlan, TTh, Kepner 204; *class meets T, 8:00-9:55; Th, 8:00-8:50; permission of instructor. 9:05 a.m.*
- CSPW 252-3 Workshop for Residence Hall Directors and Housemothers, 2 hours, Stuckey-Tanner, MTWThF, Wiebking Hall Lounge; *class meets 9:00-4:00; class meets June 19-23.*
- CSPW 358-3 Internship in College Student Personnel Work, 2 hours, Bowen, Th, Kepner 204; *class meets 9:05-11:00. 10:10 a.m.*
- CSPW 353-4 College Counseling & Health Services, 3 hours, Kinnick, MWF, Kepner 204. *1:00 p.m.*
- CSPW 352-7 Student Housing, 3 hours, Stuckey, MTWThF, Carter 201; *class meets 1:00-4:00; class meets July 24-August 4.*
- CSPW 354-7 Admissions and Records, 3 hours, Miller, MTWThF, Carter 201; *class meets 1:00-4:00; class meets June 19-30.*

### LIBRARY SCIENCE

- 7:00 a.m.*
- LS 284-1 The Librarian and Reading Guidance for Youth, 5 hours, Unassigned, MTWThF, Carter 305. *8:00 a.m.*
- LS 283-2 Book Selection for School Libraries, 5 hours, Unassigned, MTWThF, Carter 305. *9:05 a.m.*
- LS 280-3 Organization and Administration of the School Library, 5 hours, Unassigned, MTWThF, Carter 305. *10:10 a.m.*
- LS 282-4 Reference Material for School Libraries, 5 hours, W. Richardson MTWThF, Carter 305. *11:15 a.m.*
- LS 281-5 Classification and Cataloging, 5 hours, W. Richardson, MTWThF, Carter 305; *class also meets MTWThF, 1:25-3:35.*

\*These classes are open only to those students who have been formally admitted to the Advanced Teacher Education Program.

### PSYCHOLOGY, COUNSELING AND GUIDANCE

#### Arranged

- PCG 390-70 Internship in School Psychology, maximum 16 hours, Anderson, Arranged.
- PCG 415-70 Supervised Practice in Counseling, 3 hours, Meier, Arranged; *permission of instructor.*
- PCG 415-71 Supervised Practice in Counseling, 3 hours, L. Montgomery, Arranged; *permission of instructor.*
- PCG 415-72 Supervised Practice in Counseling, 3 hours, Pierce, Arranged; *permission of instructor.*
- PCG 415-73 Supervised Practice in Counseling, 3 hours, Usher, Arranged; *permission of instructor.*
- PCG 415-74 Supervised Practice in Counseling, 3 hours, Unassigned, Arranged; *permission of instructor.*
- PCG 415-75 Supervised Practice in Counseling, 3 hours, Unassigned, Arranged; *permission of instructor.*
- PCG 415-76 Supervised Practice in Counseling, 3 hours, Unassigned, Arranged; *permission of instructor.*
- PCG 415-77 Supervised Practice in Counseling, 3 hours, Unassigned, Arranged; *permission of instructor.*
- PCG 415-78 Supervised Practice in Counseling, 3 hours, Unassigned, Arranged; *permission of instructor.*
- PCG 415-79 Supervised Practice in Counseling, 3 hours, Unassigned, Arranged; *permission of instructor. 7:00 a.m.*
- PCG 222-1 Seminar: Psychological Issues, 3 hours, Unassigned, MWF, Gunter Annex 6.
- PCG 285-1 Mental Hygiene and Emotional Adjustment, 3 hours, Unassigned, MWF, Gunter Annex 5.
- PCG 314-1 Techniques in Group Guidance, 3 hours, L. Montgomery, TTh, Gunter Annex 5; *class meets T, 7:00-8:50; Th, 7:00-7:50.*
- PCG 317-1 Foundations of Guidance, 3 hours, Blanchard, MWF, Gunter Annex 103.
- PCG 331-1 Child Psychology, 3 hours, Unassigned, MWF, Kepner 123.
- PCG 340-1 Theories of Learning, 5 hours, Unassigned, MTWThF, Gunter Annex 105.
- PCG 370-1 Principles and Practices in Testing and Measurement, 3 hours, Clevenger, TTh, Gunter Annex 103; *class meets T, 7:00-8:50; Th, 7:00-7:50.*
- PCG 388-1 Abnormal Psychology, 3 hours, Anderson, TTh, Kepner 123; *class meets T, 7:00-8:50; Th, 7:00-7:50. 8:00 a.m.*
- PCG 230-2 Psychology of Childhood and Adolescence, 3 hours, Fulbright, TTh, Kepner 123; *class meets T, 9:05-9:55; Th, 8:00-9:55.*
- PCG 240-2 Psychology of Learning, 3 hours, Unassigned, MWF, Kepner 123.
- PCG 315-2 Counseling Theory and Techniques, 3 hours, Luker, MWF, Gunter Annex 103.
- PCG 340-2 Theories of Learning, 5 hours, Unassigned, MTWThF, Gunter Annex 105.
- PCG 370-2 Principles and Practices in Testing and Measurement, 3 hours, Clevenger, TTh, Gunter Annex 5; *class meets T, 9:05-9:55; Th, 8:00-9:55.*
- PCG 370-22 Principles and Practices in Testing and Measurement, 3 hours, Unassigned, TTh, Gunter Annex 103; *class meets T, 9:05-9:55; Th, 8:00-9:55.*
- PCG 380-2 Theories of Personality, 3 hours, Unassigned, MWF, Gunter Annex 5. *9:05 a.m.*
- \*PCG 140-3 Educational Psychology, 5 hours, Unassigned, MTWThF, Gunter Annex 105; ATE.
- PCG 313-3 Occupational Information and Analysis in Vocational Guidance, 3 hours, Berreman, MWF, Kepner 123.
- PCG 315-3 Counseling Theory and Techniques, 3 hours, Usher, MWF, Gunter Annex 103.
- PCG 318-3 Occupational Information for Guidance in Elementary Schools, 3 hours, Pierce, MWF, Gunter Annex 5. *10:10 a.m.*
- PCG 230-4 Psychology of Childhood and Adolescence, 3 hours, Fulbright, TTh, Kepner 123; *class meets T, 10:10-12:05; Th, 10:10-11:00.*
- PCG 285-4 Mental Hygiene and Emotional Adjustment, 3 hours, L. Montgomery, MWF, Gunter Annex 5.
- PCG 311-4 Organization and Administration of Guidance Services, 3 hours, Berreman, MWF, Kepner 123.

\*These classes are open only to those students who have been formally admitted to the Advanced Teacher Education Program.

- PCG 315-4 Counseling Theory and Techniques, 3 hours, Usher, TTh, Gunter Annex 103; *class meets T, 10:10-12:05; Th, 10:10-11:00.*
- PCG 340-4 Theories of Learning, 5 hours, Unassigned, MTWThF, Gunter Annex 105.
- PCG 370-4 Principles and Practices in Testing and Measurement, 3 hours, Unassigned, TTh, Gunter Annex 5; *class meets T, 10:10-12:05; Th, 10:10-11:00.*
- PCG 374-4 Supervised Practice in the Use of Individual Tests of Intelligence, 4 hours, Lutey, TTh, Gunter Annex 6; *class meets TTh, 10:10-12:05; permission of instructor.*
- PCG 374-24 Supervised Practice in the Use of Individual Tests of Intelligence, 4 hours, Unassigned, TTh, Gunter Annex 8; *class meets TTh, 10:10-12:05; permission of instructor.*
- PCG 374-34 Supervised Practice in the Use of Individual Tests of Intelligence, 4 hours, Unassigned, TTh, Crabbe 306; *class meets TTh, 10:10-12:05; permission of instructor.*
- PCG 374-44 Supervised Practice in the Use of Individual Tests of Intelligence, 4 hours, Unassigned, TTh, Arranged; *class meets TTh, 10:10-12:05; permission of instructor.*
- PCG 422-4 Seminar: Issues in Psychology, Counseling and Guidance 3 hours, Luker, MWF, Gunter Annex 6. **11:15 a.m.**
- PCG 240-5 Psychology of Learning, 3 hours, Unassigned, TTh, Kepner 123; *class meets T, 12:20-1:10; Th, 11:15-1:10.*
- PCG 311-5 Organization and Administration of Guidance Services, 3 hours, Berreman, TTh, Gunter Annex 5; *class meets T, 12:20-1:10; Th, 11:15-1:10.*
- PCG 332-5 Psychology of Adolescence, 3 hours, Unassigned, MWF, Kepner 123.
- PCG 340-5 Theories of Learning, 5 hours, Unassigned, MTWThF, Gunter Annex 105.
- PCG 373-5 Individual Tests of Intelligence, 3 hours, Lutey, MWF, Gunter Annex 103.
- PCG 373-25 Individual Tests of Intelligence, 3 hours, Unassigned, MWF, Gunter Annex 5.
- PCG 388-5 Abnormal Psychology, 3 hours, Anderson, TTh, Gunter Annex 103; *class meets T, 12:20-1:10; Th, 11:15-1:10.*
- PCG 422-5 Seminar: Issues in Psychology, Counseling and Guidance, 3 hours, Unassigned, MWF, Gunter Annex 6. **12:20 p.m.**
- PCG 101-6 Guidance in the Classroom, 3 hours, Unassigned, MWF, Kepner 123.
- PCG 140-6 Educational Psychology, 5 hours, Unassigned, MTWThF, Gunter Annex 105; ATE.
- PCG 170-6 Introduction to Measurement and Evaluation, 3 hours, Unassigned, MWF, Kepner 119.
- PCG 280-6 Personality Development, 3 hours, Unassigned, MWF, Frasier 148.
- PCG 317-6 Foundations of Guidance, 3 hours, Blanchard, MWF, Gunter Annex 5.
- PCG 373-6 Individual Tests of Intelligence, 3 hours, Lutey, MWF, Gunter Annex 103. **1:25 p.m.**
- PCG 20-7 General Psychology, 3 hours, Unassigned, TWF, Kepner 204.
- PCG 170-7 Introduction to Measurement and Evaluation, 3 hours, Unassigned, MWF, Gunter Annex 105.
- PCG 201-7 Guidance in the Elementary School, 3 hours, Pierce, TTh, Gunter Annex 5; *class meets T, 1:25-3:20; Th, 1:25-2:15.*
- PCG 214-7 Guidance Workshop, 3 hours, Clevenger, MTWThF, Carter 304; *class meets 1:25-4:40; class meets June 19-30.*
- PCG 230-7 Psychology of Childhood and Adolescence, 3 hours, Fulbright, TTh, Kepner 11; *class meets T, 1:25-3:20; Th, 1:25-2:15.*
- PCG 280-7 Personality Development, 3 hours, Unassigned, TTh, Kepner 123; *class meets T, 1:25-3:20; Th, 1:25-2:15.*
- PCG 280-27 Personality Development, 3 hours, Unassigned, MWF, Kepner 11.
- PCG 314-7 Techniques in Group Guidance, 3 hours, Unassigned, TTh, Frasier 249; *class meets T, 1:25-3:20; Th, 1:25-2:15.*
- PCG 317-7 Foundations of Guidance, 3 hours, Blanchard, MWF, Gunter Annex 103.
- PCG 331-7 Child Psychology, 3 hours, Unassigned, MWF, Kepner 123.
- PCG 347-7 Learning Problems: Diagnosis and Remediation, 3 hours, Meier, TTh, Gunter Annex 103; *class meets T, 1:25-3:20; Th, 1:25-2:15.*

- PCG 370-7 Principles and Practices in Testing and Measurement, 3 hours, Unassigned, MWF, Frasier 148.
- PCG 384-7 Group Dynamics in Human Relations, 3 hours, Unassigned, MWF, Kepner 125.
- PCG 387-7 Seminar in School Psychology, 4 hours, Anderson, T, Gunter Annex 6; *class meets 1:25-5:30.*
- PCG 415-7 Supervised Practice in Counseling, 3 hours, Koplitz, MWF, Gunter Annex 5; *permission of instructor.* **2:30 p.m.**
- PCG 20-8 General Psychology, 3 hours, Unassigned, MWF, Kepner 119.
- PCG 21-8 General Psychology and Human Performance, 3 hours, Unassigned, TWF, Kepner 204.
- PCG 170-8 Introduction to Measurement and Evaluation, 3 hours, Unassigned, MWF, Kepner 218.
- PCG 184-8 Industrial Psychology, 3 hours, Fulbright, MWF, Kepner 123.
- PCG 285-8 Mental Hygiene and Emotional Adjustment, 3 hours, L. Montgomery, MWF, Gunter Annex 5.
- PCG 315-8 Counseling Theory and Techniques, 3 hours, Unassigned, MWF, Gunter Annex 103.
- PCG 370-8 Principles and Practices in Testing and Measurement, 3 hours, Unassigned, MWF, Kepner 206.
- PCG 371-8 Aptitude and Achievement Analysis, 5 hours, Koplitz-Unassigned, MTWThF, Kepner 9.
- PCG 372-8 Aptitude and Achievement Analysis, K-6, 5 hours, Koplitz-Unassigned, MTWThF, Gunter Annex 105.

### SPECIAL EDUCATION

- 7:00 a.m.**
- SPED 200-1 The Education of Exceptional Children, 3 hours, Forgnone, MWF, Bishop-Lehr 200.
- SPED 210-1 Introduction to Mental Retardation, 4 hours, Kolstoe, TTh, Bishop-Lehr 200; *class meets 7:00-8:50.*
- SPED 211-1 Education of Severely Mentally Retarded Children, 3 hours, Unassigned, MWF, Bishop-Lehr 202.
- SPED 212-1 Curriculum Development and Methodology for Mentally Retarded, 4 hours, Unassigned, TTh, Bishop-Lehr 204; *class meets 7:00-8:50.*
- SPED 250-1 Pathology and Introduction to Education of the Deaf, 3 hours, Unassigned, MWF, Bishop-Lehr 204.
- SPED 302-1 Appraisal of Exceptional Children, 4 hours, Unassigned, TTh, Bishop-Lehr 203; *class meets 7:00-8:50.*
- SPED 346-1 The Multi-Impaired Blind Child, 3 hours, Napier, MWF, Bishop-Lehr 205.
- SPED 364-1 Voice Disorders and Treatment, 3 hours, Unassigned, MWF, Bishop-Lehr 203. **8:00 a.m.**
- SPED 241-2 Survey of Education of the Visually Handicapped, 3 hours, Napier, MWF, Bishop-Lehr 200.
- SPED 256-2 Education of Hard-of-Hearing Child, 3 hours, Unassigned, MWF, Bishop-Lehr 203.
- SPED 266-2 Programming Speech Correction in the Public School, 3 hours, Unassigned, MWF, Bishop-Lehr 202.
- SPED 270-2 Audiology, 3 hours, Hunt, MWF, Bishop-Lehr 204.
- SPED 360-2 Speech Habilitation in Cerebral Palsy, 3 hours, Unassigned, MWF, Bishop-Lehr 205. **9:05 a.m.**
- SPED 200-3 The Education of Exceptional Children, 3 hours, Unassigned, MWF, Bishop-Lehr 200.
- SPED 210-3 Introduction to Mental Retardation, 4 hours, Forgnone, TTh, Bishop-Lehr 200; *class meets 9:05-11:00.*
- SPED 251-3 Speech Development for Acoustically Handicapped Children, 6 hours, Henkels, MWF, Bishop-Lehr 203; *class meets 9:05-11:00.*
- SPED 264-3 Speech Correction in the Classroom, 3 hours, Unassigned, MWF, Bishop-Lehr 204.
- SPED 290-3 Introduction to Rehabilitation, 3 hours, Eldredge, MWF, Bishop-Lehr 202.
- SPED 312-3 Advanced Curriculum Development, 4 hours, Unassigned, TTh, Bishop-Lehr 203; *class meets 9:05-11:00.*
- SPED 395-3 Seminar in Rehabilitation: Specific Disability Areas, 3 hours, McAlees, TTh, Bishop-Lehr 204; *class meets T, 10:10-11:00; Th, 9:05-11:00.*
- SPED 401-3 Research Seminar in Special Education and Rehabilitation, 3 hours, Kolstoe, MWF, Bishop-Lehr 205. **10:10 a.m.**
- SPED 231-4 Problems of Teaching the Physically Handicapped, 3 hours, D. Peterson, MWF, Bishop-Lehr 200.
- SPED 260-4 Speech Pathology I, 3 hours, Unassigned, MWF, Bishop-Lehr 202.

- SPED 271-4 Speech Audiometry, 3 hours, Hunt, MWF, Bishop-Lehr 204.
- SPED 363-4 The Theory and Treatment of Stuttering, 3 hours, Unassigned, MWF, Bishop-Lehr 205.  
11:15 a.m.
- SPED 230-5 Care and Pathology of the Physically Handicapped, 3 hours, D. Peterson, MWF, Bishop-Lehr 200.
- SPED 245-5 Secondary Methods for the Blind, 3 hours, Weishahn, MWF, Bishop-Lehr 202.
- SPED 311-5 Vocational Rehabilitation of Mentally Retarded Youth, 3 hours, R. Wolfe, MWF, Bishop-Lehr 203.
- SPED 411-5 Medical and Psychological Aspects of Mental Retardation, 4 hours, Cegelka, TTh, Bishop-Lehr 203; *class meets 11:15-1:10.*
- SPED 441-5 Seminar in Visually Handicapped, 3 hours, Unassigned, TTh, Bishop-Lehr 205; *class meets T, 11:15-1:10; Th, 11:15-12:05.*  
12:20 p.m.
- SPED 253-6 Methods of Teaching Content Subjects to the Deaf, 6 hours, Henkels, MWF, Bishop-Lehr 204; *class meets 12:20-2:15.*
- SPED 321-6 Methods of Teaching Classes of Socially and Emotionally Maladjusted Children, 3 hours, Smitherman, MWF, Bishop-Lehr 200.
- SPED 350-6 Advanced Problems in Teaching Deaf Children, 3 hours, Unassigned, MWF, Bishop-Lehr 202.
- SPED 361-6 Cleft Palate Speech and Therapy, 3 hours, Unassigned, TTh, Bishop-Lehr 204; *class meets T, 1:25-2:15; Th, 12:20-2:15.*
- SPED 362-6 The Rehabilitation of Persons with Aphasia, 3 hours, Unassigned, MWF, Bishop-Lehr 203.
- SPED 392-6 Vocational Placement and Adjustment of the Disabled in Rehabilitation, 3 hours, Eldredge, MWF, Bishop-Lehr 205.  
1:25 p.m.
- SPED 202-7 Counseling Parents of Exceptional Children, 3 hours, Cegelka, MWF, Bishop-Lehr 200.
- SPED 301-7 Administration and Supervision of Special Education, 3 hours, Gearheart, MWF, Bishop-Lehr 202.
- SPED 396-7 Seminar in Rehabilitation: Professional Problems, 3 hours, R. Wolfe, MWF, Bishop-Lehr 205.
- SPED 403-7 Trends in Special Education, 3 hours, Unassigned, MWF, Bishop-Lehr 203.  
2:30 p.m.
- SPED 220-8 Introduction to the Education of Socially and Emotionally Disturbed Children, 3 hours, Unassigned, TTh, Bishop-Lehr 204; *class meets T, 2:30-4:25; Th, 2:30-3:20.*
- SPED 280-8 Education of Children with Special Abilities, 3 hours, Unassigned, MWF, Bishop-Lehr 200.
- SPED 322-8 Sociological and Cultural Aspects of Socially and Emotionally Disturbed Children, 3 hours, Smitherman, MWF, Bishop-Lehr 202.
- SPED 331-8 Advanced Problems in Teaching the Cerebral Palsied, 3 hours, D. Peterson, MWF, Bishop-Lehr 204.
- SPED 343-8 Advanced Braille, 3 hours, Napier, MWF, Bishop-Lehr 203.  
3:35 p.m.
- SPED 262-9 Clinical Practice in Speech Correction, 2 hours, Unassigned, Arranged, Bishop-Lehr 140.
- SPED 274-9 Practicum in Audiology, 3 hours, Hunt, Arranged, Bishop-Lehr 138.
- SPED 314-9 Practicum with the Mentally Retarded, 6 hours, Unassigned, Arranged, Bishop-Lehr 141.
- SPED 314-29 Practicum with the Mentally Retarded, 6 hours, Unassigned, Arranged, Bishop-Lehr 137.
- SPED 314-39 Practicum with the Mentally Retarded, 6 hours, Unassigned, Arranged, Bishop-Lehr 135.
- SPED 314-49 Practicum with the Mentally Retarded, 6 hours, Unassigned, Arranged, Bishop-Lehr 133.
- SPED 314-59 Practicum with the Mentally Retarded, 6 hours, Unassigned, Arranged, Bishop-Lehr 145.
- SPED 323-9 Seminar in Education of Emotionally Disturbed, 3 hours, Smitherman, Arranged, Arranged.
- SPED 324-9 Practicum with the Socially and Emotionally Disturbed, maximum of 15 hours, Unassigned, Arranged, Arranged.
- SPED 334-9 Practicum with Physically Handicapped, maximum of 15 hours, Unassigned, Arranged, Bishop-Lehr 132.
- SPED 344-9 Practicum with Visually Handicapped, 6 hours, Weishahn, Arranged, Bishop-Lehr 130.
- SPED 354-9 Practicum with the Deaf and Hard-of-Hearing, maximum of 15 hours, Unassigned, Arranged, Arranged.

- SPED 394-9 Supervised Clinical Practice in Rehabilitation Counseling, 16 hours, McAlees, Arranged, Bishop-Lehr 142.

## DIVISION OF ARTS

### FINE ARTS

#### 7:00 a.m.

- FA 17-1 Introduction to Pottery, 3 hours, Schumacher, MWF, Guggenheim 2; *labs. arranged.*
- FA 108-1 Clay Modeling, 2 hours, Cordiner, TTh, Guggenheim 2; *labs. arranged.*
- FA 127-1 Craft Techniques, 3 hours, Ball, MWF, Guggenheim 206; *labs. 2 hours, TTh, 7:00-7:45.*
- FA 209-1 Print Making, 3 hours, Cordiner, MWF, Guggenheim 201.
- FA 335-1 Advanced Life Drawing, 2 hours, Mariani, TTh, Guggenheim 106; *labs. arranged.*  
8:00 a.m.
- FA 11-2 Introduction to Design, 5 hours, Blubaugh, MTWThF, Guggenheim 1; *labs. arranged.*
- FA 124-2 Elementary Art, 3 hours, Leacock, MWF, Guggenheim 100; *labs. arranged; must be taken concurrently with FA 125-2.*
- FA 125-2 Methods of Teaching Art in the Elementary School, 2 hours, Leacock, TTh, Guggenheim 100; *must be taken concurrently with FA 124-2.*
- FA 227-2 Glaze Formulation, 3 hours, Schumacher, MWF, Guggenheim 2; *labs. arranged.*
- FA 232-2 Contemporary Oil Painting, 5 hours, W. Green, MTWThF, Guggenheim 200; *lab. arranged; prerequisite FA 120.*
- FA 319-2 Serigraphy, 2 hours, Ball, TTh, Guggenheim 205; *labs. arranged.*

#### 9:05 a.m.

- FA 111-3 Advanced Design, 5 hours, Blubaugh, MTWThF, Guggenheim 1; *labs. arranged.*
- FA 120-3 Introduction to Oil Painting, 3 hours, W. Green, MWF, Guggenheim 200; *labs. arranged.*
- FA 124-3 Elementary Art, 3 hours, Leacock, MWF, Guggenheim 100; *labs. arranged; must be taken concurrently with FA 125-3.*
- FA 125-3 Methods of Teaching Art in the Elementary School, 2 hours, Leacock, TTh, Guggenheim 100; *must be taken concurrently with FA 124-3.*
- FA 203-3 Watercolor Painting, 5 hours, Mariani, MTWThF, Guggenheim 106; *labs. arranged.*
- FA 205-3 Monoprints, 2 hours, W. Green, TTh, Guggenheim 201.
- FA 208-3 Sculpture, 3 hours, Cordiner, MWF, Guggenheim 2; *labs. arranged.*
- FA 315-3 Craft Trends in the Secondary School, 2 hours, Ball, TTh, Guggenheim 206; *labs. arranged.*

#### 10:10 a.m.

- FA 1-4 Drawing, 3 hours, Hutchinson, MWF, Guggenheim 106; *labs. 2 hours, TTh, 10:10-11:00.*
- FA 126-4 Instructional Techniques in Art Education, 3 hours, Scamell, MWF, Guggenheim 1.
- FA 200-4 Techniques of Creative Weaving, 3 hours, Ball, MWF, Guggenheim 205; *labs. arranged.*
- FA 221-4 Art History I, 3 hours, O. Green, MWF, Guggenheim 105.
- FA 304-4 Seminar in Art Education, 2 hours, D. Johnson, TTh, Guggenheim 201.
- FA 328-4 The Curriculum in Art Education, 3 hours, D. Johnson, MWF, Guggenheim 201.

#### 11:15 a.m.

- FA 12-5 Elementary Crafts Design, 2 hours, Leacock, TTh, Guggenheim 100.
- FA 13-5 Lettering, 2 hours, Scamell, TTh, Guggenheim 201.
- FA 54-5 Drawing and Painting Techniques, 3 hours, Hutchinson, MWF, Guggenheim 1; *labs. arranged.*
- FA 103-5 Introduction to Watercolor Painting, 2 hours, O. Green, TTh, Guggenheim 106; *labs. arranged.*
- FA 301-5 Supervision of Art, 3 hours, Scamell, MWF, Guggenheim 201.
- FA 317-5 Ceramics, 3 hours, Schumacher, MWF, Guggenheim 2; *labs. arranged; for beginning graduates only.*

#### 1:25 p.m.

- FA 23-7 Poster Design and Production, 2 hours, Cordiner, TTh, Guggenheim 1.
- FA 51-7 Introduction to Color, 3 hours, Hutchinson, MWF, Guggenheim 201; *labs. arranged.*

- FA 223-7 Survey of Art, 5 hours, O. Green, MTWThF, Guggenheim 105.  
 FA 302-7 Trends in Art Education, 2 hours, D. Johnson, TTh, Guggenheim 201.  
 FA 317-7 Ceramics, 3 hours, Schumacher, MWF, Guggenheim 2; *labs. arranged; for advanced graduates only.*  
 FA 320-7 Advanced Oil Painting, 2 hours, W. Green, TTh, Guggenheim 200; *labs. arranged.*  
**2:30 p.m.**  
 FA 101-8 Philosophy of Art Education, 2 hours, D. Johnson, TTh, Guggenheim 105.  
 FA 123-8 Art Education for the Secondary School, 3 hours, Hutchinson, MWF, Guggenheim 201.  
 FA 228-8 Seminar in Secondary Art, 2 hours, Blubaugh, MTWThF, Guggenheim 1; *class meets 2:30-4:40; class meets June 19-June 30.*  
 FA 230-8 Seminar in Elementary Art, 2 hours, Scamell, MTWThF, Guggenheim 100; *class meets 2:30-4:40; class meets July 10-July 21.*  
 FA 230-28 Seminar in Elementary Art, 2 hours, Scamell, MTWThF, Guggenheim 100; *class meets 2:30-4:40; class meets July 24-August 4.*  
 FA 303-8 Advanced Watercolor Painting, 2 hours, O. Green, TTh, Guggenheim 106; *labs. arranged.*

### HOME ECONOMICS

#### Arranged

- HEC 264-70 Workshop in Pre-School, 3 hours, Reeves, Southard House; *lab. 6 hours, MTWThF, arranged between 9:05 and 1:00.*  
 HEC 299-70 Home Management Residence, 3 hours, Unassigned, Home Management House; *lab. 6 hours, arranged.*  
**7:00 a.m.**  
 HEC 203-1 Development and Guidance of the Young Child, 3 hours, Reeves MWF, Crabbe 305; *lab. 2 hours, MTWThF, arranged between 9:05 and 11:00.*  
 HEC 376-1 Problems in Clothing Construction, 3 hours, Nye, MTWThF, Bishop-Lehr 111; *class meets 7:00-9:55; class meets July 17-August 4.*  
 HEC 389-1 Advanced Clothing Construction, 3 hours, Bailey, T, Crabbe 301; *lab. 4 hours, TTh, 8:00-9:50.*  
**8:00 a.m.**  
 HEC 301-2 Supervision of Student Teaching in Home Economics, 3 hours, Hall, MTWThF, Crabbe 302; *class meets June 19-July 28.*  
 HEC 387-2 Food Economics, 3 hours, Funderburk, MTWThF, Gunter Annex 6; *class meets 8:00-9:55; class meets June 19-July 7.*  
**9:05 a.m.**  
 HEC 71-3 Textile Fundamentals, 3 hours, Taylor, MWF, Crabbe 306.  
 ED 249-3 Principles of Vocational Education, 3 hours, Hall, MWF, Crabbe 305.  
 HEC 284-3 Demonstration Techniques, 2 hours, Grable, MTWF, Crabbe 202.  
 HEC 285-3 Experimental Cookery, 3 hours, Cadigan, MW, Crabbe 206; *lab. 2 hours, TF, 9:05-9:55.*  
**10:10 a.m.**  
 \*HEC 78-4 Principles of Food Preparation, 4 hours, Funderburk, MWF, Crabbe 206; *lab. 3 hours, MWF, 11:15-12:05.*  
 \*HEC 94-4 Elementary Cookery and Food Service, 4 hours, Grable, MW, Crabbe 202; *lab. 4 hours, TTh, 10:10-12:05.*  
 HEC 209-4 New Trends in Nutrition, 3 hours, Cadigan, MWF, Crabbe 305.  
 HEC 243-4 Art in Contemporary Living, 3 hours, Taylor, MWF, Crabbe 306.  
 HEC 306-4 History of Costume, 3 hours, Nye, MWF, Crabbe 302.  
 HEC 372-4 Techniques of Textile Research, 3 hours, Bailey, MTWThF, Crabbe 301; *class meets June 19-July 28.*  
**11:15 a.m.**  
 HEC 72-5 Elementary Clothing Construction, 3 hours, Nye, MWF, Crabbe 301; *lab. 3 hours, MWF, 12:20-1:10.*  
 HEC 255-5 Consumer Problems of the Family, 3 hours, Cadigan, MWF, Crabbe 305.  
 HEC 265-5 The Family, 3 hours, Taylor, MWF, Crabbe 306.  
 HEC 304-5 Evaluation in Homemaking Education, 4 hours, Hall, MTWF, Crabbe 302.

\*These classes are open only to those students who have been formally admitted to the Advanced Teacher Education Program.

- 12:20 p.m.**  
 HEC 298-6 Meal Planning and Service, 4 hours, Funderburk, TTh, Crabbe 206; *lab. 4 hours, TTh, 10:10-12:05.*  
**1:25 p.m.**  
 HEC 244-7 Personal Improvement for the Teacher, 3 hours, Grable, MTWThF, Ross Lecture 106; *class meets 1:25-4:25; class meets June 19-30.*  
 HEC 274-7 Equipment Selection and Maintenance, 4 hours, Cadigan, MTWThF, Crabbe 206; *class meets 1:25-4:25; class meets July 17-August 4.*  
 HEC 275-7 Home Furnishings, 3 hours, Taylor, MTWThF, Crabbe 305; *class meets 1:25-3:20; class meets June 19-July 7.*  
 HEC 280-7 Preservation of Food II, 2 hours, Grable, MTWThF, Crabbe 202; *class meets 1:25-4:25; class meets July 3-15.*

### INDUSTRIAL ARTS

- 7:00 a.m.**  
 IA 50-1 Bench Woodwork, 3 hours, D. Olson, MWF, Crabbe 102; *lab. 3 hours, MWF, 8:00-8:50.*  
 IA 243-1 Theory and Practice in Offset Lithography, 3 hours, Unassigned, MWF, Kepner 4; *lab. 3 hours, TTh, 7:00-8:15.*  
 IA 261-1 Architectural Drawing, 3 hours, Hammond, TTh, Art Annex 300; *lab. 3 hours, MWF, 9:05-9:55; class meets T, 7:00-8:50; Th, 7:00-7:45.*  
 IA 272-1 Advanced Gas and Electric Welding, 3 hours, Kruger, MWF, Art Annex 100; *lab. 3 hours, MWF, 8:00-8:50.*  
 IA 274-1 Advanced Machine Tool Operation, 2 hours, Kruger, TTh, Art Annex 100; *lab. 2 hours, TTh, 8:00-8:50.*  
 IA 362-1 Problems in Drafting and Planning, 3 hours, Hammond, MWF, Art Annex 300; *labs. arranged.*  
**8:00 a.m.**  
 IA 281-2 Problems in Teaching General Shop Electricity, 3 hours, Unassigned, MWF, Art Annex 300; *lab. 3 hours, MWF, 9:05-9:55.*  
 IA 292-2 Steam and Reaction Engines, 3 hours, Davis, MWF, Crabbe 106; *lab. 3 hours, MWF, 9:05-9:55.*  
 IA 333-2 History of Industrial Arts, 4 hours, Erwin, MTThF, Crabbe 305.  
 IA 335-2 Philosophy of Industrial Arts, 3 hours, Perry, MWF, Guggenheim 105.  
 IA 338-2 Curriculum Development in Industrial Arts, 3 hours, Jelden, TTh, Guggenheim 105; *class meets T, 8:00-9:55; Th, 8:00-8:50.*  
**9:05 a.m.**  
 IA 72-3 Gas and Electric Welding, 2 hours, Kruger, TTh, Art Annex 100; *lab. 2 hours, TTh, 10:10-11:00.*  
 IA 240-3 Graphic Arts Design and Layout, 3 hours, Unassigned, TTh, Kepner 4; *lab. 3 hours, TTh, 10:30-12:00; class meets T, 10:10-11:00; Th, 9:05-11:00.*  
 IA 256-3 Advanced Upholstery, 2 hours, D. Olson, TTh, Crabbe 102; *lab. 2 hours, TTh, 8:00-8:50.*  
 IA 272-3 Advanced Gas and Electric Welding, 3 hours, Kruger, MWF, Art Annex 100; *lab. 3 hours, MWF, 10:10-11:00.*  
 IA 331-3 A Critique of Modern Industrial Arts, 3 hours, M. Johnson, TTh, Guggenheim 105; *class meets T, 10:10-11:00; Th, 9:05-11:00.*  
 IA 339-3 Evaluation in Industrial Arts, 3 hours, Jelden, MWF, Guggenheim 105.  
 IA 344-3 Problems of Design in the Graphic Arts, 3 hours, Unassigned, MWF, Kepner 4; *lab. 3 hours, MWF, 8:00-8:50.*  
 IA 381-3 Industrial Electronics, 2 hours, Unassigned, TTh, Art Annex 300.  
**10:10 a.m.**  
 IA 257-4 Construction Problems in Wood, 3 hours, D. Olson, MWF, Crabbe 102; *lab. 3 hours, TTh, 10:10-11:30.*  
 IA 285-4 Basic Radio (AM-FM), 3 hours, Unassigned, MWF, Art Annex 300; *lab. 3 hours, MWF, 11:15-12:05.*  
**11:15 a.m.**  
 IA 220-5 Course Organization in Industrial Arts, 3 hours, Hammond, MWF, Guggenheim 105.  
 IA 290-5 Power Fundamentals, 3 hours, Davis, MWF, Crabbe 106; *lab. 3 hours, MWF, 10:10-11:00.*  
 IA 352-5 Problems in Woodworking, 3 hours, D. Olson, MWF, Crabbe 102; *lab. 3 hours, MWF, 1:25-2:15.*  
 IA 373-5 Advanced Lapidary and Silver Crafts, 3 hours, Erwin, TTh, Art Annex 200; *lab. 3 hours, T, 10:10-11:00; Th, 9:05-11:00.*  
 IA 375-5 Problems of the Metal Shop, 3 hours, M. Johnson, MWF, Art Annex 100; *lab. 3 hours, MWF, 12:20-1:10.*

- 1:25 p.m.**  
 IA 275-7 Advanced Machine Shop Practice, 3 hours, M. Johnson, MWF, Art Annex 100; *lab. 3 hours, MWF, 2:30-3:20.*  
 IA 336-7 Critique for General Shop Organization, 3 hours, Erwin, MTWThF, Art Annex 200; *workshop; class meets 1:25-4:25; class meets June 19-30.*  
 IA 395-7 Problems in Teaching Power, 3 hours, Davis, MTWThF, Crabbe 106; *workshop; class meets 1:25-4:25; class meets July 31-August 11.*  
 IA 430-7 Research in Industrial Arts, 1 hour, Jelden, Th, Crabbe 306.

## DIVISION OF BUSINESS

### BUSINESS

- 7:00 a.m.**  
 BUS 164-1 Marketing, 3 hours, Will, MWF, Kepner 108.  
 BUS 253-1 Personnel Management, 5 hours, Damgaard, MTWThF, Kepner 216.  
 BUS 256-1 Business Policies and Management, 3 hours, Will, TTh, Kepner 108.  
 BUS 257-1 Production Management, 3 hours, Thames, MWF, Frasier 101.  
 BUS 287-1 Electronic Data Processing, 3 hours, Yetka, MWF, Kepner 114.  
**8:00 a.m.**  
 BUS 125-2 Business Finance, 3 hours, Will, MWF, Kepner 108.  
 BUS 221-2 Advanced Accounting, 5 hours, Kennedy, MTWThF, Frasier 101.  
**9:05 a.m.**  
 BUS 115-3 Business Communications, 3 hours, Thames, MWF, Kepner 115.  
 BUS 228-3 Income Tax Accounting I, 3 hours, Kennedy, MWF, Frasier 101.  
 BUS 279-3 Marketing Research, 3 hours, Will, TTh, Kepner 108.  
 BUS 290-3 The Consumer in Our Economy, 3 hours, Heimerl, MWF, Kepner 216.  
 BUS 321-3 Seminar in Accounting Theory, 3 hours, Kennedy, TTh, Frasier 101.  
**10:10 a.m.**  
 BUS 231-4 Real Estate Law, 2 hours, Damgaard, TTh, Kepner 216.  
 BUS 278-4 Sales Management, 3 hours, Unassigned, MWF, Kepner 216.  
**11:15 a.m.**  
 BUS 149-5 Mathematics for Management, 3 hours, Thames, MWF, Frasier 101.  
 BUS 285-5 Systems and Procedures, 3 hours, Yetka, MWF, Kepner 114.  
 BUS 333-5 Applied Business Law, 5 hours, Damgaard, MTWThF, Kepner 216.  
**1:25 p.m.**  
 BUS 22-7 Principles of Accounting III, 4 hours, Waterman, MTThF, Frasier 101.  
 BUS 254-7 Investments, 3 hours, Thames, MWF, Kepner 216.  
 BUS 341-7 Foundations of Business, 3 hours, Heimerl, MWF, Kepner 114.  
**2:30 p.m.**  
 BUS 272-8 Principles of Real Estate, 3 hours, Trainer, MWF, Kepner 216.

### BUSINESS EDUCATION

- 7:00 a.m.**  
 BUED 356-1 Improvement of Instruction in Shorthand, 2 hours, Hillestad, TTh, Kepner 114.  
**8:00 a.m.**  
 BUED 277-2 Adult Programs in Business Education, 3 hours, Unassigned, MWF, Kepner 113.  
 BUED 401-2 Analysis of Research in Business Education, 5 hours, Hillestad, MTWThF, Kepner 115.  
 BUED 403-2 Post High School Business Education, 3 hours, Yetka, MWF, Kepner 114.  
**9:05 a.m.**  
 BUED 371-3 Tests and Measurements in Business Education, 5 hours, Hillestad, MTWThF, Kepner 114.  
**10:10 a.m.**  
 BUED 372-4 Curriculum Construction in Business Education, 5 hours, Dykman, MTWThF, Kepner 108.  
 BUED 373-4 Current Problems in Business Education, 3 hours, Waterman, MWF, Frasier 101.

- 11:15 a.m.**  
 BUED 353-5 Improvement of Instruction in Bookkeeping and Accounting, 2 hours, Waterman, TTh, Frasier 101.  
 BUED 355-5 Improvement of Instruction in Distributive Education, 3 hours, Unassigned, MWF, Kepner 108.  
**1:25 p.m.**  
 BUED 280-7 Workshop in Business Education—Creativity, 3 hours, Blockhus, MTWThF, Kepner 108; *class meets 1:25-5:30; class meets June 14-23.*  
**2:30 p.m.**  
 BUED 280-8 Workshop in Business Education—Data Processing, 3 hours, Yetka, MTWThF, Kepner 108; *class meets 2:30-5:30; class meets July 3-14.*  
 BUED 280-28 Workshop in Business Education—Forkner Shorthand, 2 hours, Forkner, MTWThF, Kepner 114; *class meets 2:30-5:30; class meets June 26-30.*  
 BUED 374-8 Cooperative Programs in Business Education, 2 hours, Unassigned, MTWThF, Kepner 108; *class meets 2:30-4:30; class meets July 31-August 11.*

## DIVISION OF HEALTH, PHYSICAL EDUCATION AND RECREATION

- 7:00 a.m.**  
 HPER 16-1 Golf, 1 hour, Benich, T, Men's Gym; *beginning; fee required; class meets 7:00-8:50.*  
 HPER 16-21 Golf, 1 hour, Benich, W, Men's Gym; *beginning; fee required; class meets 7:00-8:50.*  
 HPER 16-31 Golf, 1 hour, Benich, F, Men's Gym; *beginning; fee required; class meets 7:00-8:50.*  
 HPER 61-1 Personal and Community Health, 3 hours, Unassigned, MWF, Gunter 203.  
 HPER 62-1 First Aid, 2 hours, Unassigned, TTh, Gunter 203.  
 HPER 121-1 Applied Human Physiology, 5 hours, Unassigned, MTWThF, Gunter 205; *lab. TTh, 8:00-8:50, Gunter Hallway.*  
 HPER 252-1 Internship in Recreation, 15 hours, Shirley, MTWThF, Gunter 103.  
 HPER 271-1 Safety Education, 3 hours, Lindahl, MWF, Gunter 201.  
 HPER 375-1 Areas and Facilities in Physical Education and Recreation, 4 hours, Shirley, MTWF, Frasier 205.  
**8:00 a.m.**  
 HPER 12-2 Tennis, 1 hour, Unassigned, MWF, Courts; *beginning.*  
 HPER 20-2 Bowling, 1 hour, Unassigned, TTh, College Center Alleys; *beginning; fee required.*  
 HPER 61-2 Personal and Community Health, 3 hours, Wright, MWF, Frasier 205.  
 HPER 62-2 First Aid, 2 hours, Wright, TTh, Frasier 205.  
 \*HPER 101-2 Health Education in the Elementary School, 2 hours, J. Humphrey, TTh, Gunter 201.  
 HPER 245-2 Advanced Techniques in Teaching Gymnastic Activities, 4 hours, Rossi, MTWThF, Gunter Annex 3.  
 HPER 272-2 Recreation Leadership, 3 hours, Shirley, MWF, Gunter 107.  
 HPER 322-2 Advanced Physiological Kinesiology, 4 hours, Barham, MTThF, Gunter 205.  
 HPER 402-2 Changing Perspectives in Physical Education, 4 hours, Sage, MTThF, Gunter 203.  
**9:05 a.m.**  
 HPER 12-3 Tennis, 1 hour, Unassigned, MWF, Courts; *beginning.*  
 HPER 20-3 Bowling, 1 hour, Benich, TTh, College Center Alleys; *beginning; fee required.*  
 HPER 25-3 Swimming, 1 hour, Unassigned, MW, Pool; *beginning.*  
 HPER 33-3 Social Dance, 1 hour, Notto, TTh, Gunter Annex 3; *beginning.*  
 HPER 62-3 First Aid, 2 hours, Wright, TTh, Gunter 205.  
 HPER 88-3 Physical Education Activities for the Elementary School, 2 hours, Unassigned, MTWThF, Men's Gym.  
 \*HPER 101-3 Health Education in the Elementary School, 2 hours, J. Humphrey, TTh, Kepner 119.  
 \*HPER 102-3 Health Education in the Secondary School, 4 hours, LaBonde, MTThF, Gunter 201.  
 HPER 247-3 Advanced Techniques in Teaching Team Sports, 4 hours, Behling, MTWThF, Gunter Field & Gunter 107; *women.*  
 HPER 280-3 Care of Sports Injuries, 3 hours, Rossi, MWF, Gunter 205.  
 HPER 312-3 Evaluation in Health, Physical Education, and Recreation, 4 hours, Pearson, MTThF, Gunter 203.

\*These classes are open only to those students who have been formally admitted to the Advanced Teacher Education Program.

- HPER 344-3 Supervision of Physical Education and Recreation, 4 hours, McKain, MTThF, Frasier 205.  
10:10 a.m.
- HPER 12-4 Tennis, 1 hour, Unassigned, MWF, Courts; *beginning*.
- HPER 20-4 Bowling, 1 hour, Unassigned, TTh, College Center Alleys; *beginning; fee required*.
- HPER 25-4 Swimming, 1 hour, Unassigned, MW, Pool; *beginning*.
- HPER 25-24 Swimming, 1 hour, Unassigned, TTh, Pool; *intermediate*.
- HPER 62-4 First Aid, 2 hours, Wright, TTh, Gunter 205.
- HPER 88-4 Physical Education Activities for the Elementary School, 2 hours, Behling, MTWThF, Gunter 107.
- \*HPER 101-4 Health Education in the Elementary School, 2 hours, Rossi, TTh, Gunter 201.
- HPER 201-4 Problems in School Health Programs, 4 hours, LaBonde, MTThF, Frasier 205.
- \*HPER 226-4 Tests and Measurements in Physical Education, 3 hours, Pearson, MWF, Gunter 201.
- \*HPER 232-4 Adapted Physical Education, 3 hours, D. Humphrey, MWF, Gunter 205.
- HPER 257-4 Dance History and Philosophy, 4 hours, Notto, MTThF, Gunter Annex 4.
- HPER 270-4 Administration of Athletics, 3 hours, Lindahl, MWF, Gunter Hallway.
- HPER 304-4 School Health Administration, 4 hours, J. Humphrey, MTThF, Gunter 203.  
11:15 a.m.
- HPER 3-5 Badminton, 1 hour, Unassigned, TTh, Men's Gym; *beginning*.
- HPER 12-5 Tennis, 1 hour, Unassigned, MWF, Courts; *beginning*.
- HPER 25-5 Swimming, 1 hour, Unassigned, MW, Pool; *beginning*.
- HPER 62-5 First Aid, 2 hours, Unassigned, TTh, Frasier 205.
- HPER 63-5 Advanced First Aid, 1 hour, Rossi, TTh, Gunter 205; *students must register for both HPER 63 and 64; class meets June 14-July 13*.
- HPER 64-5 Instructors Course in First Aid, 1 hour, Rossi, TTh, Gunter 205; *students must register for both HPER 63 and 64; class meets July 18-August 18*.
- \*HPER 226-5 Tests and Measurements in Physical Education, 3 hours, Lindahl, MWF, Gunter 205.
- \*HPER 235-5 Educational Interpretations of Health, Physical Education, and Recreation, 3 hours, Sage, MWF, Frasier 205.
- HPER 312-5 Evaluation in Health, Physical Education, and Recreation, 4 hours, Pearson, MTThF, Gunter 203.
- HPER 340-5 Curriculum in Health and Physical Education, 4 hours, R. Montgomery, MTThF, Gunter 201.  
12:20 p.m.
- HPER 61-6 Personal and Community Health, 3 hours, Unassigned, MWF, Frasier 205.
- HPER 65-6 Senior Life Saving, 1 hour, Best, MTWThF, Pool; *students must register for both HPER 65 and 66; class meets June 14-July 13*.
- HPER 66-6 Water Safety Instructor's Course, 1 hour, Best, MTWThF, Pool; *students must register for both HPER 65 and 66; class meets July 18-August 18*.
- HPER 88-6 Physical Education Activities for the Elementary School, 2 hours, Behling, MTWThF, Men's Gym.
- HPER 200-6 Workshop in Health, Physical Education, and Recreation for the Mentally Retarded and Physically Handicapped, 3 hours, Davis-Stein, MTWThF, Bishop-Lehr Auditorium and Gymnasium; *class meets 12:20-1:10, Bishop-Lehr Gym, 1:25-3:20, Bishop-Lehr Auditorium; class meets July 17-28*.
- HPER 248-6 Advanced Techniques in Teaching Dance Activities, 4 hours, Notto, MTWThF, Gunter 107.
- \*HPER 250-6 Administration of Physical Education, 3 hours, McKain, MWF, Gunter 201.
- HPER 265-6 Advanced Techniques in Teaching Football to Men, 2 hours, Blasi, TTh, Gunter 201.
- HPER 268-6 Programs in Recreation, 4 hours, Shirley, MTWF, Kepner 216.
- HPER 340-6 Curriculum in Health and Physical Education, 4 hours, R. Montgomery, MTThF, Gunter 203.
- HPER 404-6 Problems in Human Movement, 4 hours, Unassigned, MTWTh, Gunter 205.  
1:25 p.m.
- HPER 9-7 Physical Fitness and Conditioning, 1 hour, Benich, MWF, Conditioning Room.
- HPER 20-7 Bowling, 1 hour, Benich, TTh, College Center Alleys; *beginning; fee required*.
- HPER 247-7 Advanced Techniques in Teaching Team Sports, 2 hours, LaBonde, MTWThF, Gunter 202; *workshop, wrestling; class meets 1:25-5:00; class meets July 24-28*.
- HPER 247-27 Advanced Techniques in Teaching Team Sports, 2 hours, Benich, MTWThF, Gunter 201; *workshop, track; class meets 1:25-5:00; class meets July 31-August 4*.
- HPER 256-7 Workshop in Contemporary Dance, 4 hours, Notto, MTWThF, Gunter Annex 4.
- HPER 266-7 Advanced Techniques in Teaching Basketball to Men, 2 hours, Sage, MTWThF, Men's Gym; *workshop; class meets 1:25-5:00; class meets July 17-21*.
- HPER 274-7 Methods and Materials in Driver Education, 3 hours, Wright, MTWThF, Gunter 201; *workshop; class meets 1:25-4:10; class meets June 19-30*.
- HPER 275-7 Advanced Driver Education, 3 hours, LaBonde, MTWThF, Gunter 201; *workshop; class meets 1:25-4:10; class meets July 3-14*.
- HPER 350-7 Issues and Trends in Health Education, Physical Education, and Recreation, 4 hours, McKain, MTWTh, Frasier 205.
- HPER 401-7 Analysis of Research and Literature in Health and Physical Education, 4 hours, J. Humphrey, MTWTh, Gunter 205.
- HPER 403-7 Research Seminar in Health and Physical Education, 4 hours, Butler, MTWTh, Gunter 203.  
2:30 p.m.
- HPER 25-8 Swimming, 1 hour, Unassigned, TTh, Pool; *beginning*.
- HPER 324-8 Advanced Maturational Kinesiology, 4 hours, Barham, MTWTh, Gunter 205.  
3:35 p.m.
- Faculty Swimming, 0 hours, Guards, TTh, Pool.  
Recreational Swimming, 0 hours, Guards, MWF, Pool.  
Team Sports (Intramural Program), 0 hours, Benich.  
7:00 p.m.
- Family Fun Night, 0 hours, Shirley, W.

## DIVISION OF MUSIC

### Arranged

- MUS 205-71 Music Performance—Individual Instruction Voice, 1 hour, Himmel, Frasier 252.
- MUS 205-72 Music Performance—Individual Instruction Voice, 1 hour, G. Johnson, Frasier 153.
- MUS 205-73 Music Performance—Individual Instruction Voice, 1 hour, Schmitz, Frasier 150.
- MUS 205-74 Music Performance—Individual Instruction Voice, 1 hour, Skinner, Frasier 254.
- MUS 205-75 Music Performance—Individual Instruction Voice, 1 hour, Unassigned.
- MUS 205-76 Music Performance—Individual Instruction Piano, 1 hour, Fluke, Frasier 166.
- MUS 205-77 Music Performance—Individual Instruction Piano, 1 hour, Goodbrod, Frasier 154.
- MUS 205-78 Music Performance—Individual Instruction Piano, 1 hour, Hutcherson, Frasier 155.
- MUS 205-79 Music Performance—Individual Instruction Piano, 1 hour, Menk, Frasier 151.
- MUS 205-80 Music Performance—Individual Instruction Piano, 1 hour, Schenkman, Frasier 152.
- MUS 205-81 Music Performance—Individual Instruction Piano, 1 hour, Unassigned.
- MUS 205-82 Music Performance—Individual Instruction Organ, 1 hour, Unassigned, Frasier 55A.
- MUS 205-83 Music Performance—Individual Instruction Organ, 1 hour, Smith, Frasier 55B.
- MUS 205-84 Music Performance—Individual Instruction Strings, 1 hour, Unassigned.
- MUS 205-85 Music Performance—Individual Instruction Strings, 1 hour, Garlick, Frasier 52.
- MUS 205-86 Music Performance—Individual Instruction Strings, 1 hour, Ginsburg, Frasier 253.
- MUS 205-87 Music Performance—Individual Instruction Strings, 1 hour, Mickens, Frasier 251.
- MUS 205-88 Music Performance—Individual Instruction Woodwinds, 1 hour, Unassigned.
- MUS 205-89 Music Performance—Individual Instruction Woodwinds, 1 hour, Loren Bartlett, Frasier 170.
- MUS 205-90 Music Performance—Individual Instruction Woodwinds, 1 hour, R. James, Frasier 48.
- MUS 205-91 Music Performance—Individual Instruction Brass, 1 hour, Unassigned.

\*These classes are open only to those students who have been formally admitted to the Advanced Teacher Education Program.



## SCHEDULE OF SUMMER SCHOOL CLASSES

- MUS 205-92 Music Performance—Individual Instruction Brass, 1 hour, Baker, Frasier 167.  
 MUS 205-93 Music Performance—Individual Instruction Brass, 1 hour, Walker, Frasier 50.  
 MUS 205-94 Music Performance—Individual Instruction Percussion, 1 hour, Goes, Frasier 166.  
**7:00 a.m.**  
 MUS 10-1 Beginning Class Piano I, 1 hour, Menk, TTh, Frasier 51.  
 MUS 215-1 Instrumental Literature, 3 hours, R. James, MWF, Frasier 58.  
 MUS 279-1 Administration and Supervision of the Music Program, 3 hours, Mohr, MWF, Frasier 256.  
 MUS 380-1 Survey of Music History, 3 hours, R. Smith, MWF, Frasier 168.  
**8:00 a.m.**  
 MUS 190-2 Clarinet Class, 1 hour, Loren Bartlett, TTh, Frasier 58.  
 MUS 205-2 Music Performance (Brass Ensemble), 1 hour, Baker, TTh, Frasier 63.  
 MUS 207-2 Literature of the Pianoforte, 3 hours, Schenkman, MWF, Frasier 256.  
 MUS 251-2 Teaching Secondary School Music, 3 hours, Nofziger, MWF, Frasier 168.  
 MUS 270-2 Eighteenth Century Harmony and Forms, 3 hours, Hutcherson, MWF, Frasier 149.  
 MUS 276-2 Music in America, 3 hours, R. Smith, MWF, Frasier 51.  
 MUS 311-2 Improvement of Instruction in Instrumental Music, 3 hours, King, MWF, Frasier 58.  
 MUS 385-2 Seminar: New Music, 2 hours, Menk, TTh, Frasier 168.  
**9:05 a.m.**  
 MUS 10-3 Beginning Class Piano I, 1 hour, Fluke, TTh, Frasier 51.  
 MUS 243-3 Vocal Repertoire: French Art Song, 2 hours, Himmel, TTh, Frasier 256.  
 MUS 253-3 Music for the Exceptional Child, 3 hours, Fluke, MWF, Frasier 51.  
 MUS 305-3 Supervising Elementary Teachers of Music, 3 hours, Nofziger, MWF, Frasier 168.  
 MUS 319-3 Instrumental Techniques and Materials (Woodwinds), 5 hours, Loren Bartlett, MTWThF, Frasier 58.  
 MUS 320-3 Instrumental Techniques and Materials (Brass), 5 hours, Walker-Baker-Goes, MTWThF, Frasier 63.  
 MUS 361-3 Aesthetics and Criticism, 3 hours, Mohr, MWF, Frasier 149.  
**10:10 a.m.**  
 MUS 52-4 Harmony I, 3 hours, Goes, MWF, Frasier 168.  
 MUS 194-4 Percussion Class, 1 hour, Goes, TTh, Frasier 63.  
 \*MUS 209-4 Music Methods and Materials for Elementary Teachers, 2 hours, Nofziger, MWF, Frasier 256.  
 MUS 217-4 Methods and Materials for Class Instrumental Instruction, 3 hours, R. James, MWF, Frasier 63.  
 MUS 262-4 Symphonic Literature, 3 hours, Menk, TTh, Frasier 168; *class meets 10:10-11:30.*  
 MUS 270-4 Eighteenth Century Harmony and Forms, 3 hours, Goodbrod, MWF, Frasier 149.

\*These classes are open only to those students who have been formally admitted to the Advanced Teacher Education Program.

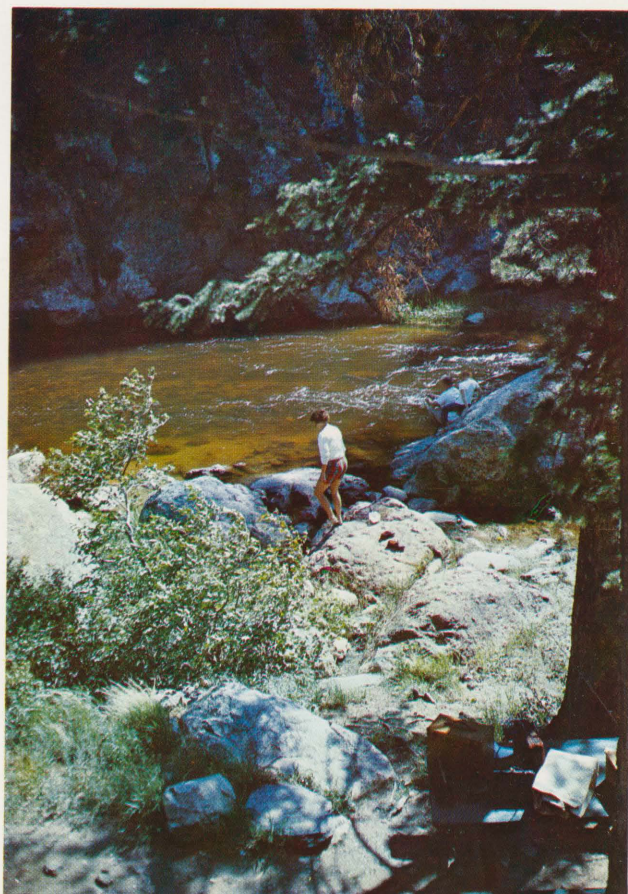
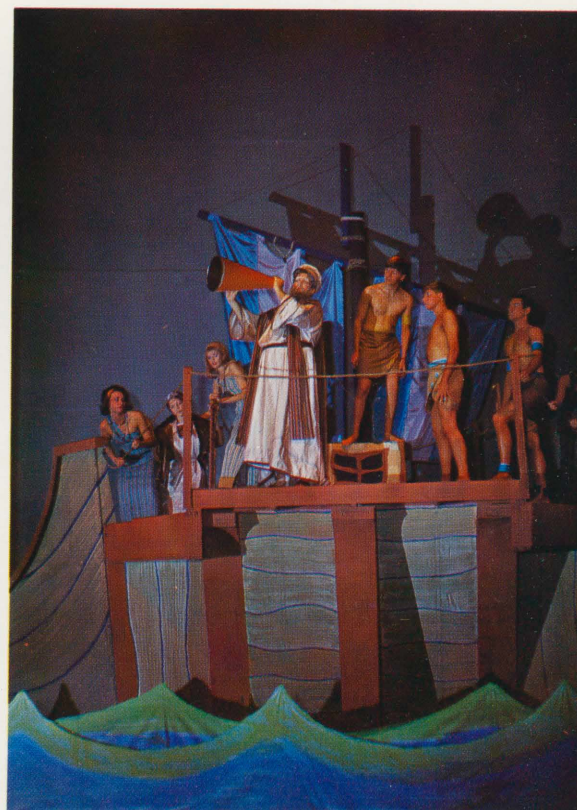
- MUS 274-4 Teaching Music Appreciation, 3 hours, G. Johnson, MWF, Frasier 51.  
 MUS 360-4 Historical Analysis of Music Structure, 3 hours, Garlick, MWF, Frasier 58.  
 MUS 420-4 Criteria for Music Analysis and Comparison, 4 hours, Hutcherson, TTh, Frasier 51; *class meets 10:10-12:00.*  
**11:15 a.m.**  
 MUS 205-5 Music Performance (Stage Band), 1 hour, Baker, TTh, Frasier 63.  
 MUS 205-25 Music Performance (Woodwind Ensemble), 1 hour, Loren Bartlett, TTh, Frasier 170.  
 MUS 252-5 Seminar in Music Education, 3 hours, Fluke, MWF, Frasier 63.  
 MUS 323-5 Comparative Voice Methods and Materials, 3 hours, Himmel, MWF, Frasier 58.  
 MUS 325-5 Comparative Piano Teaching Methods and Materials, 3 hours, Goodbrod, MWF, Frasier 149.  
 MUS 350-5 Practical Arranging, 3 hours, Goes, MWF, Frasier 51.  
**12:20 p.m.**  
 MUS 205-6 Music Performance (Concert Choir), 1 hour, Skinner, MWF, Frasier 256.  
 MUS 205-26 Music Performance (Symphonic Orchestra), 1 hour, Mickens-Ginsburg, MWF, Frasier 63.  
 MUS 205-36 Music Performance (Chamber Orchestra), 1 hour, Mickens, TTh, Frasier 63.  
**1:25 p.m.**  
 MUS 49-7 Music Fundamentals, 2 hours, Ginsburg, MWF, Frasier 149.  
 MUS 204-7 Principles of Violin and Viola Teaching, 2 hours, Ginsburg, TTh, Frasier 149.  
 MUS 205-7 Music Performance (Concert Band), 1 hour, R. James, TTh, Frasier 63.  
 \*MUS 209-7 Music Methods and Materials for Elementary Teachers, 2 hours, Fluke, MWF, Frasier 168.  
 MUS 216-7 Methods and Materials for Class Voice Instruction, 3 hours, G. Johnson, MWF, Frasier 256.  
 MUS 310-7 Problems of Instrumental Supervision, 3 hours, King, MWF, Frasier 58.  
**2:30 p.m.**  
 MUS 202-8 Opera Workshop, 3 hours, Schmitz-Skinner, MWF, Frasier 256.  
 MUS 205-8 Music Performance (Symphonic Winds), 1 hour, Walker, MTTh, Frasier 63; *class meets 2:30-4:20;*  
 MUS 366-8 Seminar in Choral Music, 3 hours, Skinner, T, Frasier 256; *class meets 2:30-5:00.*

## DIVISION OF NURSING

- 9:05 a.m.**  
 NURS 100-3 Basic Principles of Nursing, 10 hours, Thiele-Carlson-Self-Sawatzky-Payton-Hallan, MTF, Crabbe 304; *class meets MF, 9:05-11:00; T, 2:30-4:25; lab. TWTh, 8:00-12:00, Weld County General Hospital.*  
**1:25 p.m.**  
 NURS 101-7 Pharmacology, 3 hours, Hallan, MWF, Crabbe 304.

\*These classes are open only to those students who have been formally admitted to the Advanced Teacher Education Program.

# SUMMER AT CSC



Colorado State College summer students will enjoy a diversified summer of study and recreation. On campus (upper left photo) students and their families may particularly appreciate the tree-shaded campus and the library, Carter Hall, with its air-conditioned stacks. Evenings have been planned to provide recreation as well as experiences in the finer arts. For this reason the Little Theatre of the Rockies (upper right photo) has again scheduled five outstanding theatrical productions this year. Opportunities to combine treks through the Rocky Mountains with course work are often provided through class-sponsored field trips (lower left photo); or students and their families may prefer to while away their weekends on more private outings (lower right photo).

General Introduction .....	1	
Speakers from Around the Nation .....	2	
Study-Travel Courses .....	4	
Undergraduate Programs .....	5	
Graduate Programs .....	6	
After Hours .....	7	
Admissions Policy .....	8	
Housing Information .....	9	
Tuition, Fees .....	10	
The Administration .....	11	
Summer Faculty .....	12	
Registration .....	13	
Summer Quarter Calendar .....	14	
Final Examination Sched. ....	14	
Schedule of Classes .....	14	
Undergraduate General Education Courses .....	14	
Professional Education Core—ATE .....	15	
Interdivisional Courses .....	15	
SCHOOL OF ARTS AND SCIENCES		
Anthropology .....	15	
Applied Statistics .....	15	
Biology .....	15	
Botany .....	16	
Chemistry .....	16	
Communications .....	16	
Earth Science .....	16	
Economics .....	16	
English .....	16	
English Education .....	17	
Foreign Languages .....	17	
Geography .....	17	
History .....	17	
Humanities .....	17	
Journalism .....	18	
Mathematics .....	18	
Mathematics Education .....	18	
Physics .....	18	
Political Science .....	18	
Science .....	18	
Science Education .....	19	
Social Sciences .....	19	
Sociology .....	19	
Speech and Theatre Arts .....	19	
Zoology .....	19	
SCHOOL OF EDUCATION		
Education .....	20	
Elementary Education .....	20	
College Student Personnel Work .....	22	
Library Science .....	22	
Psychology, Counseling and Guidance .....	22	
Special Education .....	23	
DIVISION OF ARTS		
Fine Arts .....	24	
Home Economics .....	25	
Industrial Arts .....	25	
DIVISION OF BUSINESS		
Business .....	26	
Business Education .....	26	
DIVISION OF HEALTH, PHYSICAL EDUCATION AND RECREATION .....		26
DIVISION OF MUSIC .....		27
DIVISION OF NURSING .....		28

