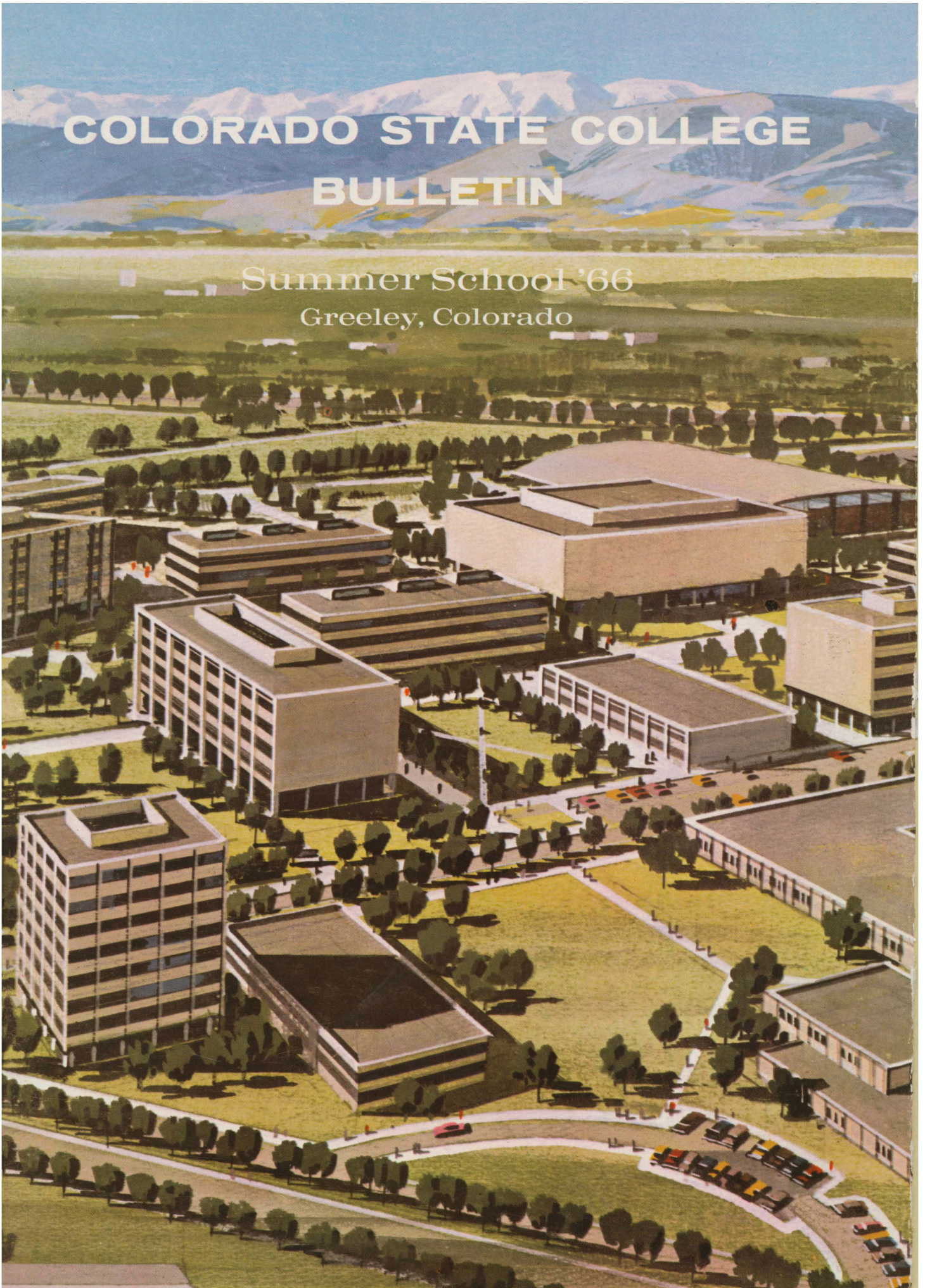
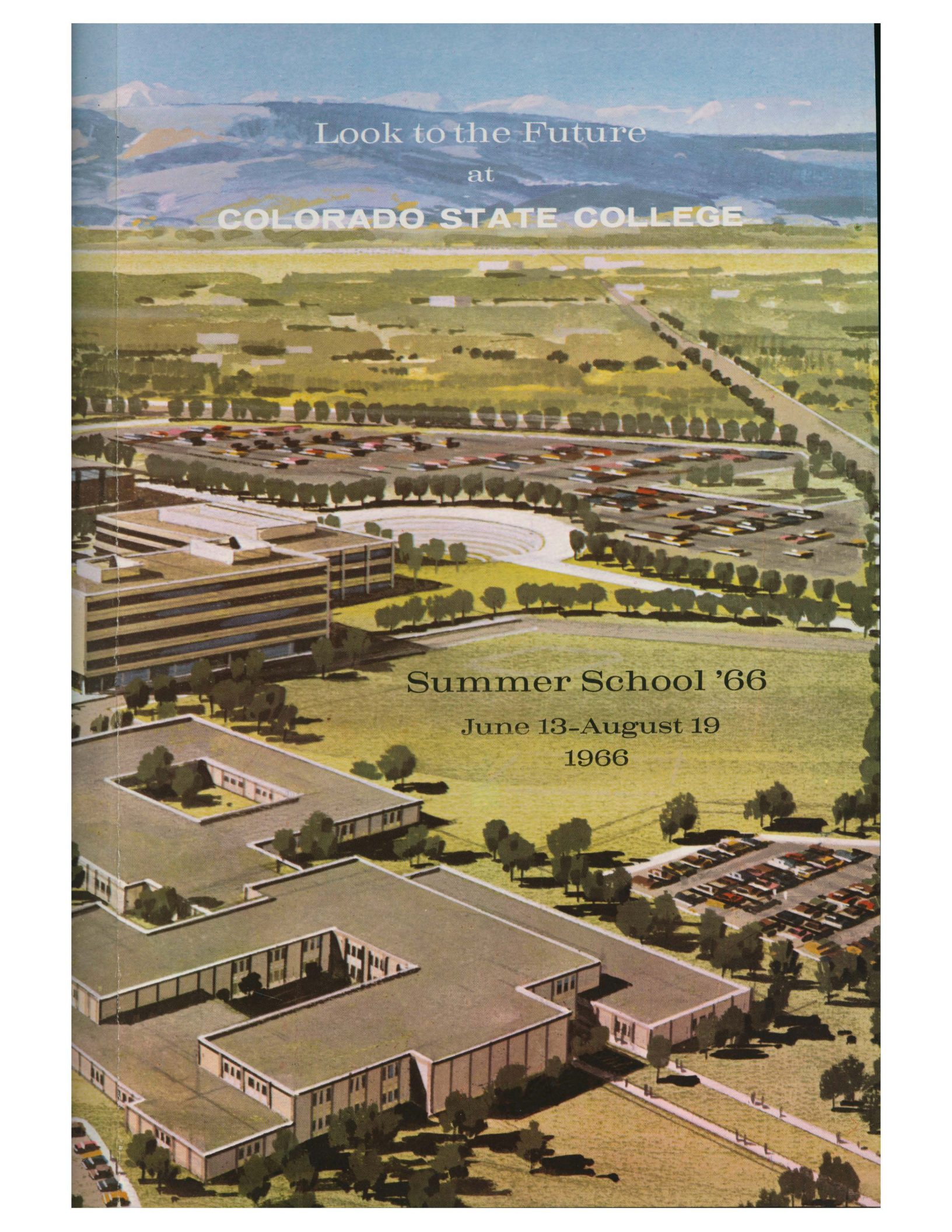


# COLORADO STATE COLLEGE BULLETIN

Summer School '66  
Greeley, Colorado





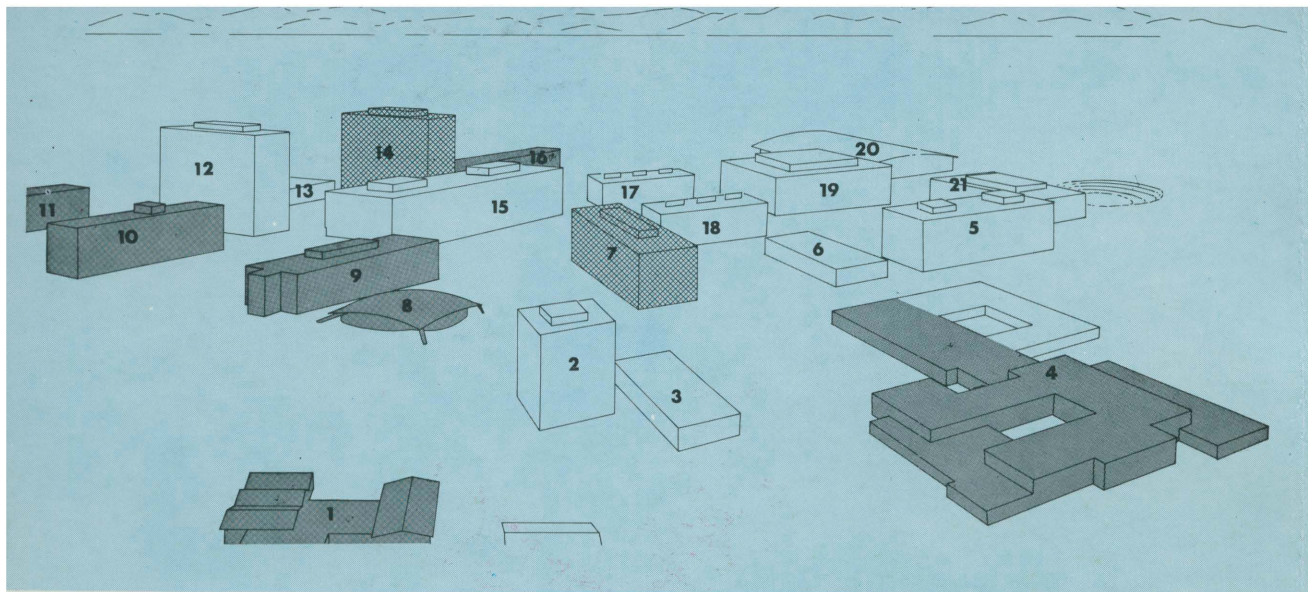
An aerial photograph of the Colorado State College campus. In the foreground, there are several large, multi-story brick buildings with flat roofs. A large, circular amphitheater is situated in the middle ground, surrounded by a parking lot filled with cars. The campus is landscaped with numerous trees and green lawns. In the background, a range of blue mountains with snow-capped peaks stretches across the horizon under a clear blue sky.

Look to the Future  
at  
**COLORADO STATE COLLEGE**

Summer School '66

June 13-August 19  
1966

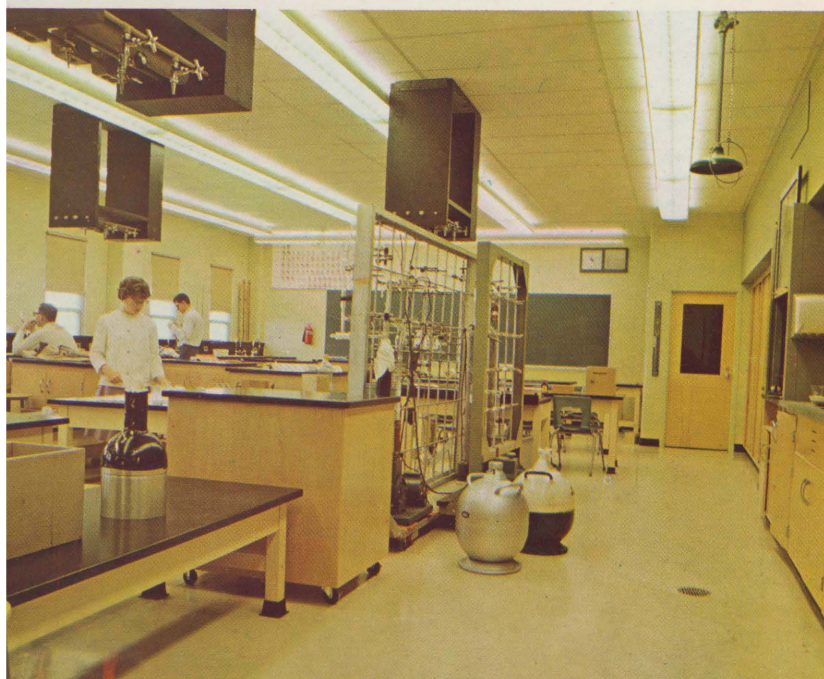




## Legend

Editor's Note: This rendering visualizes college-recommended accommodations for an enrollment of 14,000 by 1980. The rendering is a visual guide only; buildings will not necessarily be designed to conform to forms shown. Heavy screen designates buildings constructed and occupied. Light screen designates buildings in various stages of active planning. Outline designates future buildings.

- |  |   |
|--|---|
| 1. College Center (wing to be added at later date)   | 12. Residence Hall  |
| 2. Administration Building   | 13. Residence Hall Food Service   |
| 3. Student Services Building   | 14. Residence Hall (Co-educational, 13 stories, occupancy Fall Quarter, 1967)                                       |
| 4. Bishop-Lehr Hall (Laboratory school and special education faculty; wing to be added at future date) | 15. Second Science Building   |
| 5. Humanities-Social Science   | 16. Residence Hall (McCowen Hall Prototype, occupancy Summer, 1966; convertible to family residence during summers) |
| 6. Business  | 17. Industrial and Technical Arts   |
| 7. Education   | 18. Fine Arts-Home Economics  |
| 8. Ross Hall of Science Lecture Complex  | 19. Library-general classrooms  |
| 9. Ross Hall of Science  | 20. Field House   |
| 10. McCowen Hall (Women)   | 21. Music (open-air theater in rear)  |
| 11. McCowen Hall (Men)   |   |



The new facilities of the Ross Hall of Science, such as this chemistry laboratory, greatly enhance the science and mathematics programs at CSC. The building, which includes a complex of four tiered classrooms, has been termed the finest multi-purpose science building in the Rocky Mountain area.





## Friends and Prospective Students

The words, "Change," "Future," and "Planning," and the concepts which they engender are essential to the expression of American thought, especially as it pertains to Education. Due to the self-generating nature of these words and concepts, the task of education today is two-fold: (1) keeping abreast of the rapid development of new ideas and technology and (2) accurately anticipating the increasingly rapid developments which will face us in the future.

Colorado State College accepts this task with plans to prepare itself and its students to face existing problems and whatever the future may offer.

The architectural rendering found on the cover of this bulletin is a plan to accommodate a larger student body and house facilities to help teach a larger and more sophisticated body of knowledge. A corresponding academic master plan is currently being developed by the faculty to allow for an orderly development of curriculum and faculty.

Summer School at CSC is an important facet of our efforts to serve the development of Education. Our academic program is designed to meet a variety of needs — the undergraduate accelerating his degree program, the in-service teacher pursuing a graduate program or the educator seeking additional information in a specific area.

We hope you will join us for a summer of academic pursuit, social interaction and, occasionally, recreation and relaxation in the mountains and adjoining areas. You'll be welcomed at Colorado State College.

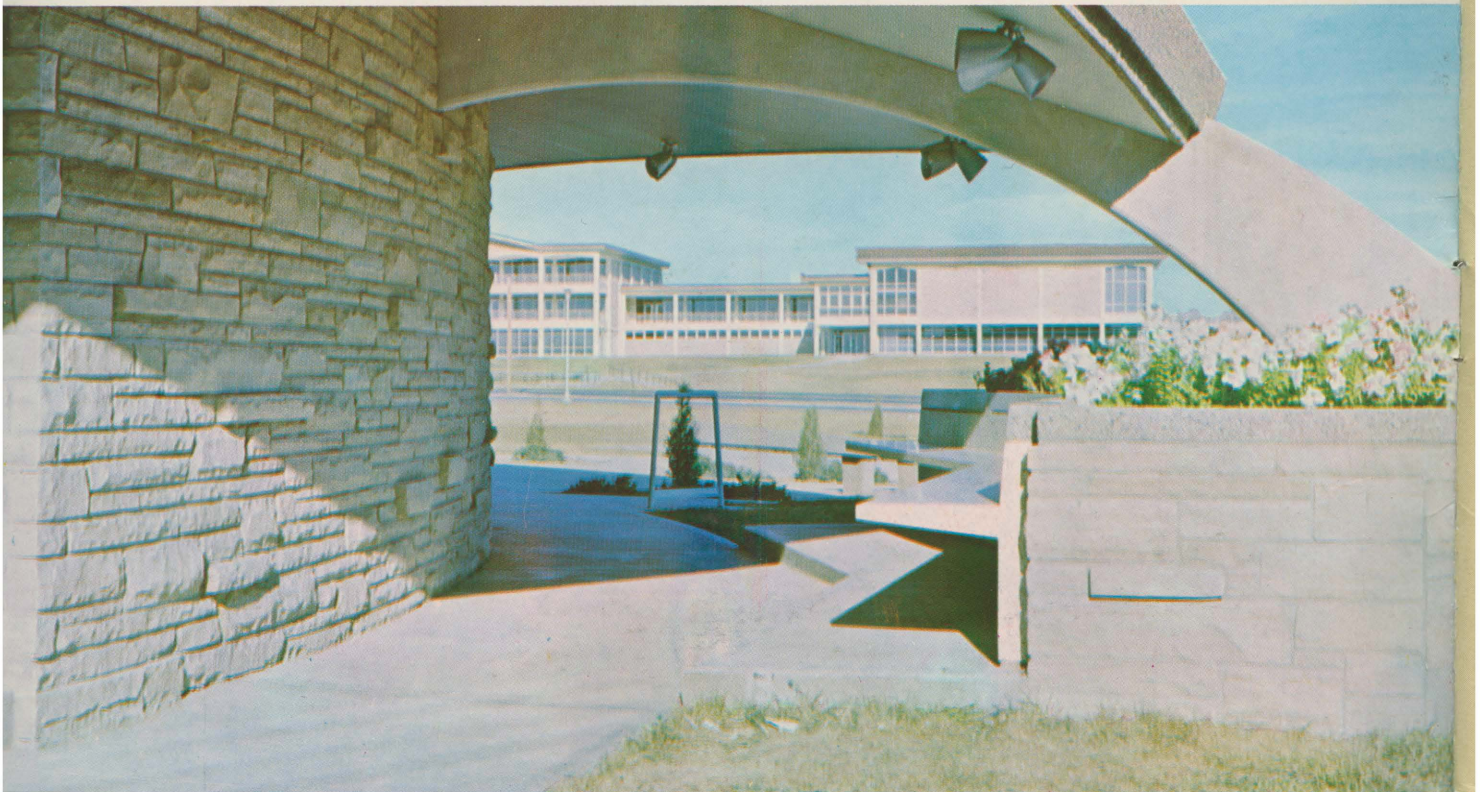
Cordially,

A handwritten signature in black ink that reads "Darrell Holmes".

Darrell Holmes

President

The verticle lines of the new \$3 million College Center framed within a flying buttress of the Ross Hall of Science Lecture Complex symbolizes the forward look of CSC's West Campus.





# A Look To the Future

The modern, beautiful, almost spectacular campus illustrated on the cover of this Summer Bulletin is a visual interpretation of Colorado State College's Master Plan designed to accommodate 14,000 students by the year 1980.

To our many alumni and friends of the College, the master plan marks a pattern of growth to be followed as a logical extension of previous plans. As is true with colleges and universities throughout the nation, CSC is faced with the task of doubling in ten to fifteen years the facilities and programs developed throughout its entire 75-year history.

As most who are familiar with the campus will recognize, future physical growth will be centered on West Campus, a gently rolling 150-acre tract. The Main or Central Campus will be used as a transitional campus with classes being transferred to West Campus structures as facilities permit. The East Campus will be used for married and single student housing plus athletic facilities.

The Master Plan for West Campus as dramatized by the artist's rendering represents the College's suggested course of action to encourage orderly, yet progressive, creative development for the immediate future. In addition to the Capital Construction Master Plan, the College is developing an Academic Master Plan which, when completed by the Spring of 1967, will provide guidelines for a quality academic program and faculty to suit the needs of our growing and increasingly diversified student body.

The Master Plan is more than a dream at this time; many buildings (College Center, Laboratory School, Science Building, and McCowen Residence Hall) are currently occupied. A second residence hall designed to house 125 student families during the summer and 540 single students during the regular academic year will be opened this summer quarter.

On the drawing boards are two buildings, a residence hall and an Education classroom building. The residence hall, breaking with past design patterns, will rise up 13 stories. Designed to house 600 single students and convertible into approximately 50 student family units, the residence hall is scheduled to open Fall Quarter, 1967. Funds for the Education building are being requested of the Legislature this year. If an unnecessary curtailment of enrollment is to be avoided, the Education building must be completed by Fall, 1968. Construction will begin February 1966 on a 100-unit married student complex on East Campus. Designed for year-round family residence, the complex should be completed within a year.

In all, the Master Plan calls for approximately \$56 million of additional construction through 1980, the cost being evenly divided between appropriated public funds and college-secured funds.

Buildings to be funded include most of the academic "core" buildings on West Campus, a residence hall similar to the 13-story hall being planned, and an additional 250 units of married student housing on East Campus.

To be constructed after the Education Building is the Library—general classroom complex which will serve as the focal point of West Campus. Following will be a Field House-Gymnasium, classroom facilities for science (additional), music, business, humanities and social science, industrial arts, home economics and fine arts; an Administration Building and a Student Services Building. An additional wing is planned for Special Education in Bishop-Lehr Hall.

In addition to the Capital Construction and Academic Master Plans, the College is investigating and effecting administrative and academic reorganization. The Division of Education and all other teacher education programs are being reorganized under a School of Education served by a Dean. A program of Arts and Sciences will be headed by a Dean and it is anticipated that increased emphasis will be placed on "content." In addition, the Department of Business and Business Education will be a separate Division of Business.

Yes, the future holds a very real meaning at Colorado State College. We are busy preparing our campus, our programs and our faculty to meet the challenges created by growth and the never-ending pursuit of quality education. Colorado State College is on the move.

---

## TABLE OF CONTENTS

	PAGE
Master Plan Description.....	1
General Introduction.....	2
Summer Festival of the Arts.....	2
Foreign Travel Tours.....	4
Washington-New York Trip.....	4
Special Courses.....	5
Admissions Policies.....	9
Registration.....	10
Undergraduate Programs.....	11
Graduate Programs.....	12
Housing Information.....	13
Tuition-Fees.....	14
Summer Faculty.....	15
Schedule of Classes.....	16
Statistical Information Form.....	31
After-School Activities.....	32



## Introduction to Summer School

In 1890, when members of Horace Greeley's Union Colony founded Colorado State College, the institution's facilities included one unfinished school building, four faculty members and a beginning class of twelve. Greeley, renowned for its cultural and spiritual foundations, was selected as the site for the teacher-training college.

Today, Colorado State College encompasses more than 85 buildings on four campuses, an average summer enrollment of 4,600 and an administration and faculty of more than 200 men and women. With teacher education still its primary purpose, CSC has also developed a progressive liberal arts program to meet current educational demands. The College is accredited in seven degree programs, and includes a fast-developing division of nursing.

The beautiful 317-acre campus is divided among the three Greeley campuses and an 80-acre Mountain Campus near Estes Park. Amid some of the most spectacular scenery

in the Rockies, the mountain campus is still under development, and is used primarily for field trips.

Greeley, still a well-planned city of wide, tree-lined streets, is located at the junction of U.S. Highways 34 and 85, and boasts a population of 32,000. Ideally situated, Greeley lies just fifty miles north of Denver, south of Cheyenne, Wyoming, and east of Estes Park, Gateway to the Rocky Mountain National Park.

Among the more prominent facilities at CSC are the library in Carter Hall, which will be air-conditioned throughout this summer for the comfort of students. The library maintains 222,500 volumes, microfilms and periodicals. The Instructional Materials Center, in the library, has more than 1,960 films, 950 filmstrips, and several hundred recordings.

Special study and meeting rooms, plus student activities offices and recreational facilities are additional outstanding features of the recently completed College Center. Both College Center facilities and the Graduate Center on the Main Campus including a snack bar, typing and study rooms and graduate lounges will be available for graduate student use.

## Summer Festival of the Arts

An annual highlight of the CSC Summer Quarter is the Festival of the Arts, a quarter-long program specifically planned to make available to the student varied and balanced cultural and recreational opportunities.

Featured this year will be lectures on subjects of widespread interest; dramatic, musical and artistic presentations; and weekly recreational programs.

### PHILOSOPHY

Monday, June 20, 1966

Leading off as the first of four Monday night lecturers will be **Dr. Mortimer J. Adler**, Director of the Institute for Philosophical Research and Associate Editor of Encyclopaedia Britannica's **Great Books of the Western World**. Speaking on the subject, "The Future of Man," Dr. Adler will incorporate the stated goals of the Institute for Philosophical Research: "taking stock of Western thought on subjects which have been of continuing philosophical interest from the advent of philosophy in ancient Greece to the present day."

Having taught at Columbia University and the University of Chicago, Dr. Adler was instrumental in instigating many educational reforms through the Great Books Foundation. Since 1953, he has conducted Executive Seminars during the summer months at Aspen, Colorado, in Chicago and San Francisco.

### MUSIC

Monday, June 27, 1966

**Mr. Boris Goldovsky**, Head of Opera Departments at New England Conservatory of Music in Boston and Berkshire Music Center in Tanglewood, will present one of his renowned "Piano Portraits" for CSC summer students. Long torn between his love of playing great music and his fondness of talking about it and exploring the curious byways through which it came into being, Mr. Goldovsky



The 1965 Summer Opera, "Carmen," was presented jointly by the Little Theatre of the Rockies, the Division of Music and the Department of Dance.





Mortimer Adler



Boris Goldovsky



Dana Farnsworth



I. M. Levitt

has combined the two loves into fascinating musical and narrative presentations.

Born in Russia, Mr. Goldovsky came naturally to his interest in music, having a well-known concert violinist, Lea Luboshutz, for a mother and a famed pianist, Pierre Luboshutz, for an uncle. A piano prodigy himself, Goldovsky made his professional debut with the Berlin Philharmonic at the age of 13. After extensively touring Europe, he came to the United States and began a distinguished career.

Presented the Peabody Award for his Metropolitan Opera commentation broadcasts, Mr. Goldovsky is also the author of "Accents on Opera."

#### MENTAL HEALTH

Monday, July 11, 1966

A survey of mental health will be presented by the third lecture series speaker, **Dr. Dana L. Farnsworth**, Henry K. Oliver Professor of Hygiene and Director of the University Health Services at Harvard University. He has also held similar posts at the Massachusetts Institute of Technology and Williams College.

A graduate of Harvard Medical School, Dr. Farnsworth is considered an expert in the fields of health, mental health, psychiatry and neurology. He is a Physician at the Massachusetts General Hospital, past President of the American College Health Association (1953-54) and of the Group for the Advancement of Psychiatry (1957-59), and a member of the Council on Mental Health of the American Medical Association. Dr. Farnsworth is the author of **Mental Health in College and University** and has collaborated on the books, **Textbook of Psychiatry**, **College Health Administration**, **Living**, **Dimensions in Health**.

#### MOON, SPACE AND UNIVERSE

Monday, July 25, 1966

Climaxing the Monday night lectures will be **Dr. I. M. Levitt**, internationally syndicated science columnist and Director of Fels Planetarium, the Franklin Institute. Accompanying his lecture with a series of original slides, Dr. Levitt will depict life on the moon, manned orbital laboratories, and the possibilities of life in the other galaxies.

Dr. Levitt was graduated from Drexel Institute of Technology and earned his Ph.D. in Astronomy from the

University of Pennsylvania. Having worked with the Franklin Institute since 1933, Dr. Levitt became Director of the Fels Planetarium in 1949 and has been awarded several honorary degrees for his work and studies in the field of Astronomy. He is the author of a number of books on outer space and has made more than 350 television appearances.

#### LITTLE THEATRE OF THE ROCKIES

Five outstanding dramatic presentations will be offered as part of the Summer Arts Program by the Little Theatre of the Rockies, one of the first college summer theaters in the West. Each of the 1966 productions will be staged two nights, Thursday and Friday, at 8:00 p.m. The program will include Jean Kerr's **Mary, Mary**; Friedrich Duerrenmatt's **The Visit**; **The Rainmaker**, by N. Richard Nash; **Luther**, by John Osborne; and Jean Anouilh's **Thieves' Carnival**.

#### OPERA

The combined departments of music, theatre and dance will present Mozart's opera, "**Cosi fan tutte**," for three consecutive nights, beginning July 20.

#### BOOK REVIEWS

For the 42nd consecutive year, members of the CSC faculty will present a series of 16 book reviews, ranging from biographies, to novels, to resource books. Review meetings convene at 4:00 p.m. Monday through Thursday for four weeks beginning July 11.

#### OTHER PROGRAMS

Band Concerts, featuring selections from classical to old favorites, will be presented by the Music Division each Tuesday night in Garden Theatre. A choral presentation and an orchestral concert are also scheduled near the end of the quarter.

A variety of student art exhibits, weekly previews of the latest educational films, and two textbook and instructional materials exhibits have been scheduled throughout the quarter.

Family Fun Night, sponsored by the Division of Health, Physical Education and Recreation, has been scheduled each Wednesday night throughout the summer. For more information, see Page 32. Special lecture, forum and debate programs will be announced and sponsored throughout the quarter by the nine academic divisions.



# Study-Travel Courses

Earn academic credit at Colorado State College during Summer '66 and, at the same time, travel to Washington and New York; or London, Berlin, Rome and Paris; or Greece?

Yes, it's possible. This summer Colorado State College is offering three study-travel plans for those students wanting to see and experience first-hand those places so often mentioned in the classroom.

Washington, D.C., and the United Nations building in New York City will be the destination of one of CSC's traveling classrooms June 4-14. Contemporary American foreign policy will be the object of study.

A 29-day tour of Western Europe will climax a summer's study of European contributions to American culture. This plan combines 33 days of in-depth study on campus from June 13 to July 15 followed by an on-the-spot tour of Europe from July 18 to August 15.

An intensive study of Greek culture during a five-week period on campus will be followed by a 30-day tour of Greece from July 17 to August 18.

**SS 220 European Contributions to American Culture** **June 13-August 15**  
(Fifteen hours credit in social science or four hours of individual studies and 11 hours in social sciences.)

Offered in cooperation with the Institute of European Studies, a non-profit organization, this course offers the opportunity for international education by tracing the political and artistic influences of Europe on American cultures.

Students first attend 33 days of on-campus study of European history and art under Profs. Arnold and Green.

Upon completion of this segment of the program, the class will embark on a 29-day tour of Europe via jet from Denver. Countries included in the tour are England, the Netherlands, Belgium, West Germany, Austria, Switzerland,



Study-tour side trips in Europe include afternoons in such historic and picturesque towns as Rothenburg-ob-der-Tauber, above.

Italy and France. Faculty members of universities throughout Western Europe will lecture to students. European tour conductors engaged by the Institute of European Studies will accompany the tour throughout Europe.

The credit may be applied toward a graduate or undergraduate degree with prior approval of the academic adviser and major department. New graduate students must apply for admission to a formal degree program.

Tour cost of \$1150 from Greeley to Greeley includes air transportation, hotels, meals and other necessary expense. Travel to and from Europe will be by jet at group flight rate. Included is air transportation to 12 cities during the tour. Cost is based on current rates and is subject to change until April 1, 1966. Tuition and living expenses on campus are additional.

Dr. Dean A. Arnold is tour director. Please contact Dr. Arnold or the Dean of the Graduate Division, for additional information. All applications must be submitted no later than April 1, 1966.

**HUM 220 Greek Culture** **June 15-August 19**  
(Fifteen hours credit in the humanities.)

This course offers an intensive study of Greek culture with thirty days in Greece following a five-week study period on campus. The campus study will involve a reading of Greek literature, history, philosophy, art and mythology. Professors Cross, Harrison and others will conduct these studies.

On July 17, the group will fly by jet aircraft to Athens. Here the group will reside in comfortable living quarters while attending lectures and visiting important sites in Greece. A careful study will be made of the buildings on the Acropolis, and the Agora. A two-day trip will be made to the Oracle of Apollo at Delphi; a three-day tour will be arranged to visit Agamemnon's palace at Mycenae, Corinth, and Olympia; and a three-day trip will be made to the island of Crete to visit the remains of the great Cretan culture in the Palaces of Knossos, Phaestos, and Mallia. In all these places directors of museums and other experts will guide the group through lectures and tours. Return to Denver on August 18. Professor Cross will conduct the group.

**USH 272 Contemporary American Foreign Policy** **June 4-14**  
(Three hours credit.)

In Washington, D.C., members of the class will hear lectures at the State Department and observe the Foreign Relations Committees of both houses. Also scheduled is a trip to the National Archives where the class will examine major historical documents, and an optional tour of the Arlington National Cemetery and Mount Vernon.

In New York, participants will tour the U.N. building, be briefed on America's role in the world organization, and will attend U.N. meetings if any are in session.

Total cost of this course will be about \$235 plus tuition, to be paid as follows: \$25 in advance, reservation deposit before May 1 and the remainder before May 15. Students will not need housing in Greeley because the class departs by train on registration day (June 4) and returns on June 14.

The course may be taken either as a single three-hour course or as three hours of a student's program for the summer quarter. For further information, contact Dr. Arthur Reynolds, Division of the Social Sciences, CSC.



# Special Courses

Complete schedule information concerning the Special Courses listed below, is found in the Schedule of Classes, pages 16 to 30.

Course No.	Course Description	Date	No. Weeks
------------	--------------------	------	-----------

## Fine Arts

- |   |                           |                  |     |
|---|---------------------------|------------------|-----|
| FA 228-8  | Seminar in Secondary Art  | June 20-July 1   | (2) |
| (Class meets 2:10-3:00; MTWThF; 2 hours credit.)  |                           |                  |     |
| A survey and demonstration of new ideas in art techniques and materials essential to a secondary school art program. Student participation in selected areas.   |                           |                  |     |
| FA 230-8  | Seminar in Elementary Art | July 11-22       | (2) |
| (Class meets 2:10-3:00, MTWThF; 2 hours credit.)  |                           |                  |     |
| This course is designed to give the graduate student a philosophy of art education; an understanding of and an opportunity to participate in the essential art activities for the elementary school; to develop his interest and enthusiasm for the teaching of art. Emphasis is given to the creative approach and the integration of the art activities with the entire school program. |                           |                  |     |
| FA 230-28   | Seminar in Elementary Art | July 25-August 5 | (2) |
| (Class meets 2:10-3:00, MTWThF; 2 hours credit.)  |                           |                  |     |
| See course description above.   |                           |                  |     |

## Home Economics

- |  |                                     |                 |     |
|--|-------------------------------------|-----------------|-----|
| HEC 244-7  | Personal Improvement of the Teacher | June 20-July 1  | (2) |
| (Class meets 1:10-4:00, MTWThF; 3 hours credit.)   |                                     |                 |     |
| A workshop in the personal improvement of the teacher. Emphasis will be given to the problems of the individual. Techniques for the development of positive mental health, expressive personality traits and attractive personal appearance will be stressed.                  |                                     |                 |     |
| HEC 291-7  | Managing the Family Resources       | July 5-15       | (2) |
| (Class meets 1:10-4:00, MTWThF; 3 hours credit.)   |                                     |                 |     |
| A study of the management of human and material resources in achieving family goals. Techniques used in managing the family's resources to achieve desired ends are stressed. Work simplification, efficient planning and management of family finances are studied in detail. |                                     |                 |     |
| HEC 302-2  | Teaching Problems in Home-making    | June 20-July 15 | (2) |
| (Class meets 8:10-9:00, MTWThF; 2 hours credit.)   |                                     |                 |     |
| Modern trends in homemaking education will be evaluated. Problems of the individual teacher are studied and assistance is given her in working out practical solutions. Common problems are considered by the entire group.  |                                     |                 |     |

## Industrial Arts

- |   |  |                |     |
|---|--|----------------|-----|
| IA 254-7  | Seminar in Elementary School Industrial Arts       | June 20-July 1 | (2) |
| (Class meets 1:10-4:00, MTWThF; 3 hours credit.)  |  |                |     |
| Development of basic skills through elementary work in wood, metals, and other materials. Adaptation of work to classroom or small shops, with limited equipment.   |  |                |     |
| IA 330-7  | Organization and Administration of Industrial Arts | July 11-22     | (2) |
| (Class meets 1:10-4:00, MTWThF; 3 hours credit.)  |  |                |     |
| A course designed for teachers, supervisors and administrators of industrial arts. Emphasis placed on shop planning, teacher and school liability, shop organization and operation, accounting procedures, maintenance problems and purchase and replacement of equipment and supplies. |  |                |     |
| IA 344-7  | Problems of Design in the Graphic Arts             | August 1-12    | (2) |
| (Class meets 1:10-4:00, MTWThF; 3 hours credit.)  |  |                |     |
| Course is centered around graphic arts problems found in individual projects with emphasis upon teaching students to recognize, appreciate and use the principles of design on the printed page.  |  |                |     |

Course No.	Course Description	Date	No. Weeks
------------	--------------------	------	-----------

## Business Education

- |  |   |                |     |
|--|---|----------------|-----|
| BUED 230-8   | Economic Education Seminar                          | August 1-12    | (2) |
| (Class meets 2:10-5:00, MTWThF; 3 hours credit.)   |   |                |     |
| Prerequisite, ECON 30 and 102. A study of the conceptual framework of economic education for potential teachers, administrators, curriculum specialists and guidance personnel.  |   |                |     |
| BUED 280-2   | Workshop in Business Education: Colorado Industries | June 6-17      | (2) |
| (Class meets 8:10-4:00, MTWThF; 3 hours credit.)   |   |                |     |
| Through cooperative effort, problems in business education will be solved. Not more than three of these courses may be applied to any one degree.  |   |                |     |
| BUED 281-8   | Workshop in Distributive Organization               | June 20-July 1 | (2) |
| (Class meets 2:10-5:00, MTWThF; 3 hours credit.)   |   |                |     |
| An intensive course designed primarily for distributive education coordinators.  |   |                |     |
| BUED 358-8   | Improvement of Instruction in Basic Business        | July 11-22     | (2) |
| (Class meets 2:10-4:00, MTWThF; 3 hours credit.)   |   |                |     |
| This course emphasizes the teaching of general business with some emphasis on the teaching of business law, consumer education, and advanced general business. Individual and group work on objectives, content, teaching practices, and evaluation. |   |                |     |

## Education

- |  |  |                |     |
|--|--|----------------|-----|
| ED 200-7   | Education Workshop: Elementary School Modern Mathematics | June 20-July 1 | (2) |
| (Class meets 1:10-4:00, MTWThF; 3 hours credit.)   |  |                |     |
| The general purpose of the workshop is to acquaint the teacher with contemporary content of elementary school mathematics and the methods of introducing it to children. Topics which have been added to or re-emphasized in the elementary school curriculum will be presented with special emphasis on the evaluation of exploratory programs. |  |                |     |
| Topics to be presented and discussed include numeration systems, number theory, sets, mathematical sentences, the number line, graphs, geometry, various algorithms, and mental computation.   |  |                |     |
| Dr. Klaas Kramer, CSC's expert in elementary school mathematics, will conduct the workshop.  |  |                |     |
| ED 200-27  | Education Workshop: Elementary School Reading            | July 5-15      | (2) |
| (Class meets 1:10-4:00, MTWThF; 3 hours credit.)   |  |                |     |
| The reading workshop will feature the teaching of the fundamental reading skills related to word perception, comprehension, and beginning reading. The instructional staff will feature experts in the field of teaching reading.  |  |                |     |
| ED 200-37  | Education Workshop: Library Science                      | June 20-July 1 | (1) |
| (Class meets 1:10-4:00, MTWThF; 3 hours credit.)   |  |                |     |
| Concentration on the problems of the small-to-intermediate size school library; this workshop will delve into the problems of library organization, cataloging, book selection, reference work, and establishing and maintaining a periodicals department.   |  |                |     |
| Selected school libraries will be available for visitation, including the college Laboratory School library.   |  |                |     |
| Dr. Lucy Maddox, librarian at Spring Arbor (Mich.) College and a member of the CSC summer guest faculty, will be in charge of the workshop.  |  |                |     |



# Special Courses

Complete schedule information concerning the Special Courses listed below, is found in the Schedule of Classes, pages 16 to 30.

Course No.	Course Description	Date	No. Weeks
ED 200-47	Education Workshop: Outdoor Education	June 20-July 1	(2)

(Class meets 1:10-4:00, MTWThF; 3 hours credit.)

The workshop is designed to provide an opportunity for teachers, supervisors, coordinators, and administrators to become acquainted with the comprehensive interdisciplinary approach to the broad area of outdoor education. The instructional staff for the workshop will include interested and qualified faculty from the academic divisions in the college and the laboratory school. A special emphasis will be centered around the sixth, seventh, and eighth grade outdoor laboratory school program. A major portion of the workshop will be devoted to presentations dealing with the relationship of the various academic areas to the methodology of outdoor education.

Highlights of the workshop will include a Saturday field trip to the "Old Man Mountain" Field Campus, the Rocky Mountain National Park, and the Trail Ridge Highline Drive.

ED 200-57	Education Workshop: New Ideas and Procedures in Education	June 27-July 1	(1)
-----------	---	----------------	-----

(Class meets 1:30-4:30, MTWThF; 3 hours credit.)

The examination of new ideas and procedures in secondary curriculum and instruction by recognized experts in these techniques, and the application of new ideas to typical problems in this area.



In the library, air-conditioned stacks and forced air cooling throughout the remainder of the premises will provide comfortable study conditions.

ED 200-67	Education Workshop: Professional Negotiations	July 18-22	(1)
-----------	---	------------	-----

(Class meets 1:30-4:30, MTWThF; 2 hours credit.)

This workshop will examine current trends and major issues in one of the most significant areas of school-community relations—direct negotiations between teacher organizations and boards of education. Representatives of districts which have formalized negotiations procedures will discuss their practices as well as problems they have encountered. Other speakers will describe alternatives to formal negotiations—e.g., joint salary-study committees.

Course No.	Course Description	Date	No. Weeks
------------	--------------------	------	-----------

	Legislators and other public officials will comment on the problems of financing increased educational costs. Representatives of the mass communication media will consider the public relations implications of teacher-board conflict and negotiations.		
--	---	--	--

Work sessions will provide participants with opportunities to develop fuller understanding of roles and techniques in negotiations procedures.

ED 200-77	Education Workshop: Elementary Principals	June 27-July 1	(1)
-----------	---	----------------	-----

(Class meets 1:10-5:00, MTWThF; 2 hours credit.)

A workshop designed to investigate the problems incurred by elementary school principals and their staffs.

ED 200-87	Education Workshop: Workshop for School Publication Sponsors	June 20-24	(1)
-----------	--	------------	-----

(Class meets 1:00-5:00, MTWThF; 2 hours credit.)

This workshop is designed to meet the needs of beginning, as well as veteran sponsors of school publications. New ideas will be presented in the development of school newspapers and annuals. Practical experience will be provided in the preparation and printing of materials. Experienced consultants will assist in areas of their competencies. The workshop will be taught by Hartman, Cleere and Grabill.

NDEA	Reading Institute	June 20-August 12	(8)
------	-------------------	-------------------	-----

Admission to the National Defense Education Act Institute is by letter of acceptance for teachers of reading in Grades 1-6 that have a minimum background in professional courses in reading. Course content includes word perception, comprehension, analysis of various reading methods, oral reading, diagnostic laboratory and a teaching practicum. Dr. Glen S. Gagon, Director of the Reading Clinic at Colorado State College, will be the director of the Institute. This course is not listed in the 1966 Summer Class Schedule.

## College Student Personnel Work

CSPW 252-3	Workshop for Residence Hall Directors and Housemothers	June 19-24	(1)
------------	--	------------	-----

(Class meets from 9:10-4:00, MTWThF; 2 hours credit.)

This course will be designed for present and prospective residence hall directors and fraternity housemothers. The philosophy and purpose of college housing, together with various methods of supervision, direction, and programming will be discussed. Meal planning, student health, etiquette, budgeting, and advising students will also be considered.

CSPW 356-7	Job Placement	July 25-August 5	(2)
------------	---------------	------------------	-----

(Class meets 1:10-4:00, MTWThF; 3 hours credit.)

The organization, practices, and problems of job placement services in higher education.

CSPW 357-7	Financial Aids	June 20-July 8	(3)
------------	----------------	----------------	-----

(Class meets 1:10-4:00, MTWThF; 3 hours credit.)

The philosophy, organization and practices of this service will be studied as preparation for student personnel work in higher education.

## Psychology, Counseling and Guidance

PCG 214-8	Guidance Workshop	June 20-July 1	(2)
-----------	-------------------	----------------	-----

(Class meets 2:10-5:00, MTWThF; 3 hours credit.)

This course is designed to provide concentration of time and study in a special problem in guidance. The needs and interests of class members will determine to a certain extent the course content.



# Special Courses

Course No.	Course Description	Date	No. Weeks
------------	--------------------	------	-----------

## Special Education

SPED 201-16	Workshop in Special Education	June 27-July 22	(4)
-------------	-------------------------------	-----------------	-----

(Class meets 1:10-4:00, MTWThF; lab. arr. 2 hours per day; to be taken in conjunction with SPED 211; 5 hours credit.)

A workshop designed for teachers and administrators. The following topics will be discussed: the philosophy and needs for Special Education, working relationships with the State Department and local community groups, certification of teachers, problems of financing and services available within the local school district, screening of pupils and requirements of medical reports.

SPED 211-17	Education of Severely Mentally Retarded children	June 27-July 22	(4)
-------------	--	-----------------	-----

(Class meets 8:45-10:15, MTWThF; lab. arr. 2 hours per day; to be taken in conjunction with SPED 201; 3 hours credit.)

Organization of special class and school programs for severely mentally retarded children. Diagnosis and classification. Development of teaching materials and techniques. Community organizations and parent education.

## Health, Physical Education and Recreation — General

HPER 63-5	Advanced First Aid	June 13-July 15	(5)
-----------	--------------------	-----------------	-----

(Class meets 11:10-12:00, TTh; 1 hour credit.)

HPER 64-5	Instructor's Course in First Aid	July 18-August 19	(5)
-----------	----------------------------------	-------------------	-----

(Class meets 11:10-12:00, TTh; 1 hour credit.)

HPER 65-6	Senior Life Saving	June 13-July 15	(5)
-----------	--------------------	-----------------	-----

(Class meets 12:10-1:00, MTWThF; 1 hour credit.)

HPER 66-6	Water Safety Instructor's Course	July 18-August 19	(5)
-----------	----------------------------------	-------------------	-----

(Class meets 12:10-1:00, MTWThF; 1 hour credit.)

## Dance

HPER 94-7	Problems in Dance Composition	June 20-July 1	(2)
-----------	-------------------------------	----------------	-----

(Class meets 1:10-2:00, MTWThF; 2 hours credit.)

Problems in dance composition includes rhythmic analysis and accompaniment for dance.

HPER 248-7	Advanced Techniques in Teaching Dance Activities	July 18-29	(2)
------------	--	------------	-----

(Class meets 1:10-5:00, MTWThF; 4 hours credit.)

Special problems and procedures for teaching social, square and folk dance. For the advanced physical education major student.

HPER 258-7	Dance Methods and Materials	August 1-12	(2)
------------	-----------------------------	-------------	-----

(Class meets 1:10-5:00, MTWThF; 4 hours credit.)

Prerequisite, HPER 90, 92, 93, 94. Teaching procedures for folk, social, square and contemporary dance. For the dance education major and minor student.

## Physical Education

HPER 200-6	Workshop: Physical Education for the Mentally Retarded	July 18-29	(2)
------------	--	------------	-----

(Class meets 12:00-3:00, MTWThF; 3 hours credit.)

Sponsored by the HPER Division at CSC in cooperation with the Colorado State Department of Education and the American Association of Health, Physical Education and Recreation, this workshop is offered to teachers and physical education administrators and supervisors who desire to provide programs for mentally retarded children and youth. Physical education and special education faculty, and Special Consultants will provide lectures. Students will receive opportunities for observation and participation in physical education activities for the mentally retarded.

Complete schedule information concerning the Special Courses listed below, is found in the Schedule of Classes, pages 16 to 30.

Course No.	Course Description	Date	No. Weeks
------------	--------------------	------	-----------

## Team Sports

HPER 247-7	Advanced Techniques in Teaching Team Sports: Baseball	June 27-July 1	(1)
------------	---	----------------	-----

(Class meets 1:10-5:00, MTWThF; 2 hours credit.)

Designed to assist the high school or college teacher with special problems in teaching and officiating team sports.

## Humanities

HUM 220-2	Greek Culture	June 15-August 19	(10)
-----------	---------------	-------------------	------

(Class meets five weeks on campus, travels 4½ weeks in Greece; 15 hours credit in the humanities.)

See Page 4 for course description.

## English

ENG 325-2	Seminar in World Literature	June 13-July 15	(5)
-----------	-----------------------------	-----------------	-----

(Class meets 8:10-10:00, MTWThF; 4 hours credit.)

The study in translation of one great work of non-English or American literature or of a small group of such masterpieces which are closely related either in form or idea. The selections vary with the needs of the students and the interest of the instructor.

## Speech

SP 248-7	Workshop in Speech Education: Curriculum	June 27-July 8	(2)
----------	--	----------------	-----

(Class meets 1:30-4:30, MTWThF; 3 hours credit.)

An opportunity to study cooperatively the problems involved in teaching speech. The area or areas to be covered in any one workshop will be determined by the interests and needs of the group or by previous announcement. These areas will include such matters as curriculum, class instructional projects, co-curricular speech activities, remedial techniques, development and use of instructional materials.

## Music

MUS 218-8	Principles of Piano Teaching	June 20-July 1	(2)
-----------	------------------------------	----------------	-----

(Class meets 2:10-5:00, MTWThF; 3 hours credit.)

Prerequisite, piano performance Level II or above. A laboratory course exploring musical objectives and basic principles of studio and classroom piano teaching. Observation and participation in group and individual piano instruction. Readiness and normal progress defined. Individual differences. Basic keyboard techniques. Interpretation and styles. Criteria for selecting teaching materials. Studio procedures. Recital planning.

MUS 250-8	Seminar in Music Education	July 11-22	(2)
-----------	----------------------------	------------	-----

(Class meets 2:10-5:00, MTWThF; 3 hours credit.)

Prerequisite, MUS 40, 41, 42; ED 141, 144, 251. A course designed for seniors who have completed student teaching. Each student will work independently on a problem occurring in his student teaching work. The class will be conducted as a seminar with reports and discussion of the student's problems.

## Mathematics

MATH 31-2	Calculus with Analytic Geometry I	June 15-July 15	(5)
-----------	-----------------------------------	-----------------	-----

(Class meets 8:10-9:00 and 11:10-12:00, MTWThF; 5 hours credit.)

Prerequisite, MATH 24 and 25. A combined course in analytic geometry and calculus. Fundamental principles of beginning analytic geometry including different forms of the equations of a straight line are developed. Elementary phases of both differential and integral calculus, along with various applications of these subjects, are considered.



# Special Courses

Complete schedule information concerning the Special Courses listed below, is found in the Schedule of Classes, pages 16 to 30.

Course No.	Course Description	Date	Weeks No.
MATH 32-2	Calculus with Analytic Geometry II	July 18-August 19	(5)
	(Class meets 8:10-9:00 and 11:10-12:00, MTWThF; 5 hours credit.)		
	Prerequisite, MATH 31. A continuation of MATH 31 of differential and integral calculus combined with analytic geometry, together with applications from all three fields. Special emphasis in calculus on transcendental functions, and an analytic geometry on conic sections.		
MED 277-7	Mathematics Teachers Workshop I	June 20-July 1	(2)
	(Class meets 1:10-4:00, MTWThF; 3 hours credit.)		
	Provision is made for students to work on individual problems related to arithmetic and mathematics. A student may take no more than six quarter hours for credit.		
MED 279-7	Mathematics Teachers Workshop III	July 11-22	(2)
	(Class meets 1:10-4:00, MTWThF; 3 hours credit.)		
	See course description above.		

## Science

SCI 206-7	Conservation of Natural Resources	June 20-July 1	(2)
	(Class meets 1:10-5:00, MTWThF; 4 hours credit.)		
	A study of the relation of natural resources to the development of man and his culture. Units of study are organized on soil, water, forests and forest products. Range management, wildlife, and mineral resources are also covered. The emphasis throughout is on their relation to man.		
SCI 207-7	Aerospace Workshop	July 11-22	(2)
	(Class meets 1:10-4:00, MTWThF; 3 hours credit.)		
	The purpose of this course is to provide the elementary and secondary teacher with a general background in aviation and an understanding of the air and space age. Subject matter will include the elementary concepts of aircraft, rocket, and satellite development, weather navigation, theory of flight, and aviation in education.		
SCI 208-7	Elementary Science Workshop	July 25-August 5	(2)
	(Class meets 1:10-4:00, MTWThF; 3 hours credit.)		
	Provision is made for public school groups and individual teachers to organize science activities for their school. Opportunity is provided for the solution of individual problems through the guidance of the instructors. Visual aids, laboratory materials, demonstration, experiments, discussions, museums, children's literature, field trips and professional literature are other resources.		
CHEM 40-3	Principles of Chemistry I	June 15-July 15	(5)
	(Class meets 9:10-10:00 and 11:10-12:00, MTWF; 5 hours credit.)		
	This course introduces the student to the principles of chemistry together with some descriptive chemistry to illustrate these principles. It is designed for science majors and minors, as well as for pre-medical, pre-dental, pre-veterinary, pre-engineering, and home economics students.		
CHEM 41-3	Principles of Chemistry II	July 18-August 19	(5)
	(Class meets 9:10-10:00 and 11:10-12:00, MTWF; 5 hours credit.)		
	Prerequisite, CHEM 40. This course is a continuation of the principles of chemistry together with the descriptive chemistry		

Course No.	Course Description	Date	Weeks No.
	necessary to illustrate these principles. It is designed for the same groups of students as CHEM 40 and is necessary to provide a reasonably complete understanding of the basic concepts of chemistry.		
NSF-CSC	Summer Institute in Biology for Secondary Teachers	June 15-August 19	(10)
	Operated under a National Science Foundation grant, the institute will offer four courses for a total of 15 quarter hours credit. Courses will be taught by CSC science resident and guest faculty, and will include BIO 296-1, Ecological Principles, 5 hours credit; BIO 297-2, Basic Genetics, 4 hours credit; BIO 298-4, Plant Growth, Development and Regulation, 4 hours credit; and BIO 299-7, Seminar in Science Inquiry, 2 hours credit.		
NSF-CSC	Summer Institute in Chemistry for Secondary Teachers	June 25-August 19	(8)
	Operated under a National Science Foundation grant, the institute will offer four courses for a total of 13 quarter hours credit. Courses will be taught by CSC science resident and guest faculty, and will include CHEM 291-2, Structure of Matter, 5 hours credit; CHEM 292-3, Introductory Organic Chemistry, 4 hours credit; CHEM 293-5, Quantitative Analysis, 4 hours credit.		

## Social Sciences

SS 220-2	European Contributions to American Culture	June 13-August 15	(10)
	(Class will meet for 33 days on campus, will travel in Europe for 29 days; 15 hours credit in social science, or 4 hours credit in individual studies and 11 hours credit in social science.)		
	See page 4 for course description.		
SS 250-7	New Viewpoints in the Social Sciences	July 19-29	(2)
	(Class meets 1:10-4:00, MWF; 3 hours credit.)		
	A survey of recent findings and new interpretations in the various social science fields. The knowledge revolution has made it virtually impossible for the average teacher to keep abreast of developments and changing concepts in areas of the social sciences outside his own area of interest, yet findings in anthropology, economics, geography, political science, and sociology have significant implications for all education. This intensive course is designed to inform the teacher of the most significant developments. Recent literature in the fields will be studied and discussed. Specialists will be invited to contribute to the discussions and review. Bibliographies and centers of information will be suggested for continuous study.		
	Teaching experience is a course prerequisite but graduate students without such experience can be admitted upon special request by their advisers. Credit is not applicable to graduate programs in the Division of the Social Sciences.		
USH 272-70	Contemporary American Foreign Policy	June 4-14	(1½)
	(Class meets enroute; 3 hours credit.)		
	See Page 4 for course description.		
NDEA	Institute in United States History for Secondary School Teachers	June 20-August 12	(8)
	Under contract with the United States Office of Education, CSC is sponsoring "Change in United States History," an institute for 45 school teachers. The institute will provide an opportunity to become more familiar with U.S. history, to improve the presentation of U.S. history in secondary school classes, to associate with prominent scholars and teachers, and to earn graduate credits if they so desire. This institute is open only to non-history majors and those who have earned less than 15 credit hours in United States History, and who are actually teaching high school classes in U.S. history in the states of Colorado, Wyoming, Nebraska, Kansas, Oklahoma, New Mexico, Arizona and Utah. For further information and printed matter, write to Dr. Richard A. Perchlik, Co-Director of the NDEA Summer Institute in History, Division of the Social Sciences, Colorado State College, Greeley, Colorado, 80631.		



# Admissions Policy

Students applying for admission to Colorado State College for Summer Quarter should complete and return the reply card bound into this bulletin. Students applying for the first time or for the first time since September, 1959, should complete and return the Statistical Information Form on page 31 of the bulletin. Additional information required as part of application for admission depends upon the status of the student as defined below. Inquiries concerning the graduate program or graduate admission should be directed to the Dean of the Graduate Division. Undergraduates should contact the Registrar for application forms. There are no admission or evaluation fees.

## Graduate Students

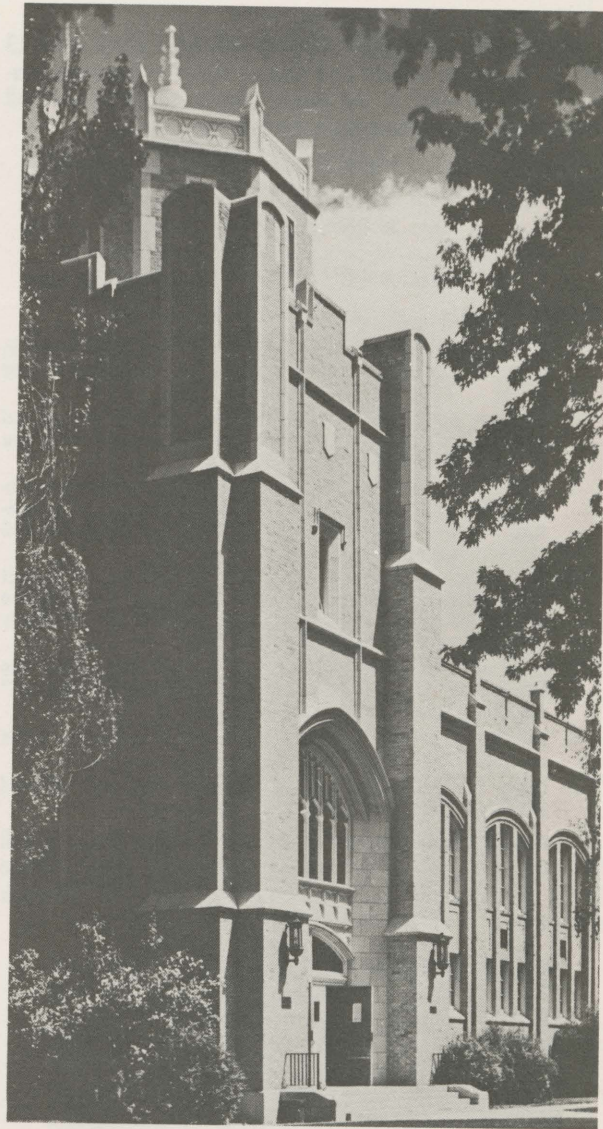
An application in triplicate and two copies of certified transcripts of all previous academic credits should be filed with the Dean of the Graduate Division. All classified graduate students are required to take an English usage examination. A completed medical examination form and two pictures must also be submitted.

## Transfer Students

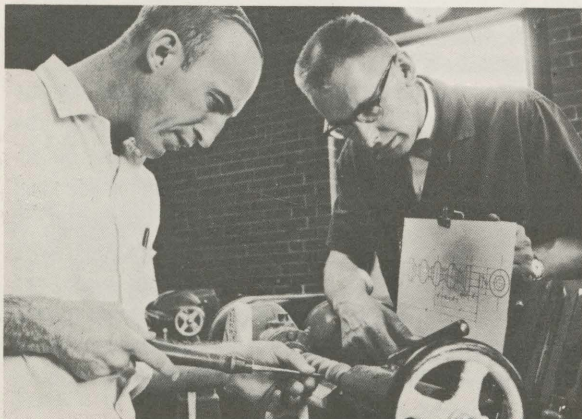
Students seeking a graduate degree from CSC may transfer eight quarter hours toward a master or specialist degree and 12 quarter hours toward either doctorate degree. The college accepts a maximum of 135 quarter hours transfer credit on undergraduate programs. Only 90 hours of the transferred credit may be granted by junior colleges. All degree-seeking students must submit two transcripts of previous college work and a health report. Undergraduate students must also submit a transcript of high school studies.

## Freshmen

Students who are entering college for the first time should write to the Registrar, Mr. George F. Sanderson, for information and application forms. To be eligible to apply for admission, in-state freshmen must graduate in the upper two-thirds of their class and out-of-state students in the upper half.



▲  
Gunter Hall is the most prominent and serene landmark on the Main Campus.



◀ Practical experience is available in most Summer Sessions workshop and special courses.

▶ Special textbook exhibits are presented each summer by regional book associations.





# Registration

Registration for regular classes will take place June 13 and 14 in Gunter Annex and Gunter Hall. Registration materials are obtained in the Gunter Annex and students will confer with their advisers in Gunter Hall.

Summer quarter students will register as follows:

June 13	8 a.m. to noon	A-L graduate students
	1 p.m. to 4 p.m.	A-L undergraduate students
June 14	8 a.m. to noon	M-Z graduate students
	1 p.m. to 4 p.m.	M-Z undergraduate students

To insure proper registration, follow these steps:

1. Students obtain registration materials in the Gunter Annex in accordance with the above alphabetical arrangement and dates.
2. Students should fill in all registration cards accurately and as completely as possible before entering Gunter Hall to see advisers and major professors.
3. Enter Gunter Hall via the north door and locate your academic adviser or major professor. Secure the adviser's signature on the Registration Form. Be sure all cards are 100 per cent complete.
4. Go to the specific division tables to secure your correct class cards and laboratory cards (if applicable). Compare registration cards with these class cards to be absolutely sure correct class cards have been given you.
5. Enter the Women's Gym via the west archway from the Men's Gym. Stop at the checking tables where "checkers" will check every card for possible errors.
6. Veterans who must complete Veterans Administration forms must see Mr. Harry Collins, Frasier 105.
7. Leave the Women's Gym via the west door and proceed to Frasier Hall for payment of fees.

Students who complete registration after June 14 will be assessed a late registration fee as described on page 14 of the Summer Bulletin. No registration for 10-week classes will be permitted after 4 p.m., Friday, June 17.



All campus walks lead to Frasier Hall, location of administrative offices and drama and music facilities.

## JUNE

S	M	T	W	Th	F	Sat
			1	2	3	4
	5	6	7	8	9	10 11
	12	13	14	15	16	17 18
	19	20	21	22	23	24 25
	26	27	28	29	30	

## Summer School Calendar

## JULY

S	M	T	W	Th	F	Sat
					1	2
3	4	5	6	7	8	9
10	11	12	13	14	15	16
17	18	19	20	21	22	23
24	25	26	27	28	29	30
31						

## AUGUST

S	M	T	W	Th	F	Sat
	1	2	3	4	5	6
7	8	9	10	11	12	13
14	15	16	17	18	19	20
21	22	23	24	25	26	27
28	29	30	31			

## Special Courses

Registration for special courses may be completed during regular registration, June 13 or 14, or at the Records Office, Frasier 126, after June 14. Students must register before the first class meeting.

A student may register for any class for no credit by paying regular tuition and fees. Class cards may be obtained from the Dean of the College. No audit or visitors cards are issued.

## Graduation

Graduation will be at 7 p.m. Thursday, August 18, in the Garden Theater. Graduating students are required to participate in graduation exercises. Caps and gowns may be rented from the college bookstore.

## Final Examinations

Final examinations will be held Wednesday, Thursday, and Friday, August 17-18-19, according to the published schedule unless special arrangements are made by the instructor for special examination periods. Graduating students are exempt from final examinations during the scheduled examination periods. A student who must be absent any part of the last week of the course or for final examinations makes arrangements with his instructor to receive an Incomplete if his reasons and previous work warrant this privilege. If arrangements are not made, the student receives an F. Only in extreme emergency (death, illness, jury duty, armed services directives) may an instructor grant an early examination privilege which requires a fee and a special examination.



# Undergraduate Programs

Students enrolling at the undergraduate level may elect to work toward a Bachelor of Arts degree in either the teacher education or liberal arts programs.

## Baccalaureate Degrees

Nine academic divisions within the College offer a total of 53 majors in the three academic programs: Arts and Sciences, Teaching Professions (Teacher Education), and Applied and Professional Studies. Three undergraduate degrees are available: Bachelor of Arts, Bachelor of Science, and Bachelor of Music.

Thirty majors are offered in the Teaching Professions program by seven academic divisions. Admission to the Teaching Professions program does not guarantee teacher certification; prior to their junior year, students pursuing a teaching professions major must apply for admission in the Advanced Teacher Education Program. If admitted, the student enrolls in a block of advanced teacher education courses including basic concepts of education, educational psychology, student teaching and educational philosophy. Successful completion of the program will result in certification of the prospective teacher to teach in Colorado and many other states in the nation.

Colorado State College also serves as a regional institution in offering a strong program in the Arts and Sciences, Pre-Professional courses, and selected Applied and Professional Studies programs. Sixteen majors are offered by five divisions in the Arts and Sciences program, while seven majors presented by four divisions are available in the Applied and Professional Studies program. Course work is offered in the fields of pre-dentistry, pre-medicine, pre-law and pre-engineering. Undergraduate male students may also participate in the Aerospace Studies program which, if successfully completed, leads to a commission in the U.S. Air Force Reserves.

## Minor Programs

In addition to the programs listed above, the college offers a number of programs as minors (27 quarter hours). Most major programs are also offered as minor programs. The program in psychology is offered as a minor only. Please consult the general catalog for specific information.

## Summer Quarter Plan

The Summer Quarter plan allows the undergraduate student to attend college on a four-quarter basis. If this plan is followed from the freshman year, the student, through continuous study, may complete his undergraduate requirements for graduation in three years. If academic requirements are met, the student is then eligible to apply for a position and earn an extra year's salary or to work on a master's degree during the fourth year which is normally devoted to undergraduate study.

### MAJORS

#### ARTS AND SCIENCES

- Fine Arts
- Humanities
  - English
  - Foreign Languages (French, German or Spanish)
  - Drama
  - Speech
- Music
- Science
  - Biological Science (Concentration in Botany or Zoology)
  - Chemistry
  - Physical Science
  - Physics
  - Mathematics
  - Medical Technology
- Social Science
  - Social Science
  - History

#### TEACHER EDUCATION

- Arts
  - Fine Arts
  - Fine Arts (Junior High Level)
  - Home Economics
  - Dietetics
  - Industrial Arts
- Business Education (Specialization in Accounting, Basic Business or Economics, Distributive Education or Secretarial)
- Education
  - Elementary Education
  - Special Education (Concentration in Mental Retardation, Acoustically Handicapped, Speech Correction, Audiology)
- Health and Physical Education
  - Physical Education for Men
  - Physical Education for Women
  - Physical Education for Elementary Education Majors (Men or Women)
- Humanities
  - English
  - English (Junior High Level)
  - Foreign Languages (French, German, or Spanish)
  - Drama
  - Speech
- Music Education (Instrumental, Vocal, or General Emphasis)
- Science
  - Biological Science (General, Ecological, or Physiological)
  - Chemistry
  - Earth Science
  - Elementary Science
  - Science (Junior High Level)
  - Physical Science
  - Physics
  - Mathematics
- Social Science
  - Social Science
  - History
  - Social Studies (Junior High Level)

#### APPLIED AND PROFESSIONAL STUDIES

- Business (Specialization in Accounting, Finance, Management, or Marketing)
- Secretarial (Two-year, non-degree program)
- Home Economics
  - Dietetics
  - Home and Family Living
- Nursing (Bachelor of Science degree)
- Recreation (Bachelor of Science degree)



# Graduate Programs

Through the Graduate Division, Colorado State College offers four advanced degree programs leading to the Master of Arts, (M.A.), Specialist in Education, (Ed.S.), Doctor of Education, (Ed.D.), and Doctor of Philosophy, (Ph.D.). The Specialist degree is offered only in the Division of Education, but is often designed across interdivisional lines to meet individual needs.

Detailed information concerning advanced degrees may be obtained by consulting the 1965-66 General Catalog or by writing to the Dean of the Graduate Division, CSC.

## Master of Arts

The Master of Arts degree may be earned in three consecutive summer quarters of full-time study. The master's degree is awarded upon completion of a minimum of 45 quarter hours of credit. Probationary students are required to complete a 60 quarter hour program. Candidates must be on-campus enrolled as full-time students for two quarters (15 quarter hours per quarter) to satisfy the minimum residence requirement.

### MASTER OF ARTS MAJOR PROGRAMS

- Arts**
  - Industrial Arts
  - Fine Arts
  - Home Economics
- Education**
  - Audio-Visual Education
  - Business Education
  - Education Administration (Elementary, Junior High or Secondary)
  - Elementary Education (Content, Developmental Reading, or Remedial Reading)
  - Junior High School Curriculum and Instruction
  - Psychology, Counseling and Guidance
  - Secondary Curriculum and Instruction
  - Special Education (Audiology, Speech Correction, Mental Retardation, Physically Handicapped, Visually Handicapped or Acoustically Handicapped)
  - Vocational Rehabilitation Counseling
  - Emphasis: Outdoor Education (Limited Elective Credit and Thesis)
- Health, Physical Education and Recreation**
  - Dance Education
  - Health Education
  - Physical Education
  - Recreation
  - Supervision of Physical Education
- Humanities**
  - English
  - Speech and Drama
- Music**
  - Music Education
  - Supervision of Music
- Science**
  - Biological Sciences
  - Botany
  - Chemistry
  - Mathematics
  - Physical Sciences
  - Physics
  - Science Education
  - Zoology
- Social Sciences**
  - History
  - Social Science

## Specialist in Education

The Specialist in Education degree is a one-year program beyond the Master's degree, assuming that the area of specialization is compatible with the undergraduate and master of arts major. This program prepares one to be what the name implies — a specialist — and course work generally cuts across divisional and departmental lines. A student may wish to specialize in areas similar to the following topics: Supervision of Science Instruction, Consultant in School Buildings, Testing in the Elementary School or Guidance in the Elementary School.

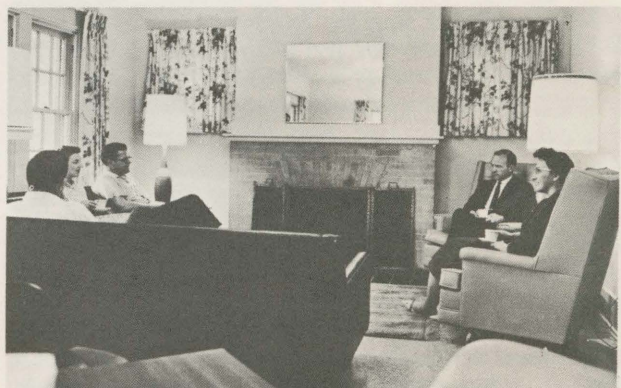
## Doctor of Education

A two-year program beyond the master's degree, the Doctor of Education degree requires course work and research of a professional nature. The student selects an area of concentration (major) and a supporting area (minor). All candidates are required to spend three consecutive quarters in residence in full-time study. To be eligible for admission to candidacy for the degree, the student must have earned at least 36 hours of credit with a "B" average or better and completed all examinations, research outlines and other classification work. Concentration or major fields of study may be chosen from: Business Education; Educational Administration; Psychology, Counseling and Guidance; Elementary Education; English; English Education; Health and Physical Education; Industrial Arts Education; Mathematics; Mathematics Education; Music Education; Reading; Science Education; Secondary Curriculum and Instruction; Secondary Curriculum and Instruction (content area); Social Science; Special Education (Administration, Mental Retardation and Visually Handicapped); Vocational Rehabilitation Counseling.

Students may select any one of the above fields for their minor course of study or one of the following: Audio-Visual Education; Curriculum; Higher Education; Mathematics; History and Philosophy of Education.

## Doctor of Philosophy

The Doctor of Philosophy degree is a three-year program beyond the baccalaureate. Two specialized programs are available: (1) College Student Personnel Work to prepare candidates for college placement as deans of students and in other related areas; and (2) Educational Measurements and Research designed to prepare candidates for college teaching assignments and/or researchers for curricular areas.



Graduate students chat with CSC faculty in the lounge of the Graduate Center.



# Housing Information

College housing is available in residence halls for single men and women, and married couples without children. All accommodations in the residence halls include room and board. The rooms are arranged to accommodate two persons to a room. Married couples are housed in residence halls, providing either the husband or wife is a student.

If the applicant desires to cancel his application in the residence halls or College houses for Summer Quarter accommodations and notifies the Director of Student Housing on or before May 15th, \$20.00 of the deposit will be refunded. If the applicant does not attend Colorado State College and cancels after May 15th the College will retain the entire \$50.00 deposit. If a student living in a residence hall or college house should withdraw from the College before the end of the quarter, he forfeits his room deposit of \$50.00, and is charged for the room rent for the balance of the quarter; however, he is allowed a refund on the dining hall charges on a pro-rated basis.

The college has a limited amount of housing for married students with one or two children in a residence hall with resident cooking facilities. Many students find rooms, apartments and houses in Greeley. Room and apartment rental listings are available to any student who desires to call in person at the Housing Office. Arrangements for accommodations with private landlords cannot be made by the Housing Office by mail, but must be made by the student directly with the landlord. Students and landlords are both advised to have a clear understanding, preferably in writing, as to facilities, prices, and intended length of tenancy.

A limited number of college-owned sorority and fraternity houses are available for single women and married couples without children. Houses accommodating single women have two or more students per room and no food service. Houses for married couples without children provide a room for each couple with community lounge and cooking privileges, but no food service.

Board and Room (Residence Halls)*	Minimum	Maximum
Men (2 per room) .....	\$255.00	\$275.00
Women (2 per room) .....	255.00	275.00
(1 per room) .....	290.00	310.00
Married Couples .....	510.00	530.00

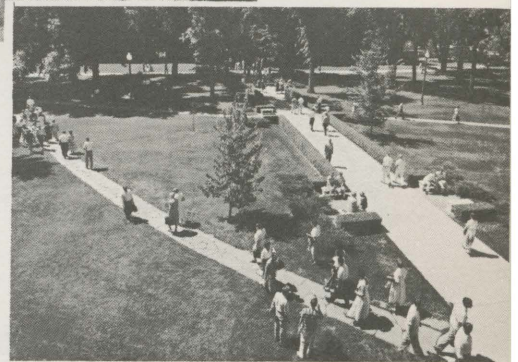
Rooms Only* (2-4 occupants per room in sorority houses)		
Single Women .....	70.00	85.00
Married Couples (Rates for 2 persons) .....	155.00	

**Residence Hall Rooms Only**  
 Family (Limited to a student and 3 dependents; not available for single students or married couples without children) .....

Trailer Parking Space, electricity and water provided, per day .....

\*The college will furnish and launder college-owned sheets, pillow cases and blankets.

Housing information for periods less than 10 weeks may be obtained from Director of Housing, Colorado State College.



Top: Students in the new West Campus Residence Hall will have access to roomy, bright dining facilities similar to the McCowen Dining Hall shown here. Bottom: CSC's beautiful campus and the warm Colorado sun are an unbeatable combination.

PLEASE PRINT **Colorado State College—1966**  
**Summer Quarter**  
**APPLICATION FOR COLLEGE HOUSING**

Name \_\_\_\_\_  
 (LAST) (FIRST) (MIDDLE)

Address \_\_\_\_\_  
 (STREET) (CITY) (STATE) (/IP-CODE)

Sex \_\_\_\_\_ Age \_\_\_\_\_

College housing desired —  
 (All rooms are for two or four persons)

**Please Enclose a \$50 Deposit**

My classification is \_\_\_\_\_ Fresh.-Soph.  
 \_\_\_\_\_ Residence Hall \_\_\_\_\_ College House \_\_\_\_\_ Jr.-Senior  
 \_\_\_\_\_ Accommodations desired for man and wife. \_\_\_\_\_ Graduate  
 \_\_\_\_\_ Accommodations desired for family



# Tuition, Fees



Located on the lower level of the New College Center, the Bookstore offers a wide selection of school and personal supplies.

Basic required tuition and fees paid by every student are collected for the number of rated credit hours of the courses for which a student registers. These are applicable to every enrollment: for partial or full study, for Colorado resident or non-resident status, and for credit or non-credit status.

All charges are due and payable at the time of regular registration or during registration for special classes. No registration is complete until the assessed charges are paid at the Accounting Office. Any registration permitted at a time other than that scheduled as defined by the regulations of this bulletin will carry a late registration fee. Please consult the incidental fees table below.

Fees for added services, individual instruction, special programs and courses carrying laboratory or field trip expenses will be assessed and paid at registration in like manner with basic tuition and fees. For programs leading to the Specialist in Education and Doctoral degrees, the General Catalog itemizes extra charges (including phasing fees) which are assessed to the student. No graduate program phasing fees will be altered or refunded if the student fails to pursue his intent or for any reason drops out of the program for which he has been accepted.

Certain tuition scholarships and waivers are issued to apply in the fall, winter and spring quarters, only; others, principally Joint Honor Scholarships and Colorado State College Awards, are now validated as well for use during the summer quarter. Only that portion of the credit hour charge represented by the tuition is waived. Holders of Student Teaching Reciprocity Waivers which are issued for fractional loads, are granted waivers for tuition plus student services fees for the credit hour value only of the STRW presented.

Determination of residence for tuition assessment purposes is made at registration in accordance with C.R.S. 1963, 124-18-1-5, a Colorado Statute governing residence status and applicable to all state institutions of higher education in Colorado.

The Trustees of the State Colleges, the governing body for Colorado State College, reserves the right to alter tuition, fees, rentals, and/or board and room charges on 30 days notice prior to the first day of registration for a summer quarter. Charges for the present summer are based on the 1965-66 General Catalog.

Tuition and Fees:	Summer 1966 Per Credit Hour of Enrollment	
Colorado Resident		
Tuition .....	\$ 4.50	
Student Service Fee .....	2.00	\$ 6.50
Non-Colorado Resident		
Tuition .....	10.00	
Student Service Fee .....	2.00	12.00

Complete tuition and student services fee assessments are computed by multiplying the number of course credit hours by \$6.50 for residents and \$12.00 for non-residents.

## Incidental Fees

Late Registration: Assessed for an enrollment completed on the first day following the scheduled registration day .....	\$5.00
Assessed for each added day, if late registration be permitted, per day .....	2.00
Special examination: Assessed when permission is granted to take an examination at a time other than regularly scheduled .....	2.00
Change of Program: Assessed for each separate change of program permitted .....	1.00

See the 1965-66 General Catalog for other fees which may be applicable in the terms of a particular registration.

## Refunds Policy

To be eligible for a refund of any kind under college regulations, the student must present a copy of an approved formal withdrawal notice to the Business Office. Forms may be obtained from the Records Office. Partial refunds for full quarter classes are granted only for early withdrawals. No refund will be granted for special short-period classes after the first meeting of the class. Please consult the 1965-66 General Catalog for the specific refund policies of the College.



# Summer Faculty

## ARTS

Perry, Kenneth, Ph.D., Division Chairman.....	Gugg.	101
*Abbott, Pat, M.A.....	Gugg.	101
*Ball, Richard, M.A.....	Gugg.	202
Blubaugh, Charles, M.A.....	Gugg.	202
*Brown, James, M.A.....	Gugg.	101
Cadigan, Marianna, M.A.....	Crabbe	207
*Cantrell, James, M.A.....	Gugg.	101
*Davis, Jim, M.A.....	Gugg.	101
Funderburk, Clara, M.A.....	Crabbe	208
Gleb, Phillip L., M.A.....	Kepner	4
Grable, Joyce, M.A.....	Crabbe	207
Green, Walt, M.A.....	Gugg.	202
Hall, Rhoda, M.A.....	Crabbe	307
Jelden, David L., Ed.D.....	Art Annex	300
Johnson, F. Morris, Ed.D.....	Art Annex	100
Krugger, John M., M.A.....	B. Lehr	152
Leacock, Rose A., M.A.....	Gugg.	102
*Lease, Al, Ph.D.....	Gugg.	101
Lubbers, J. Max, M.A.....	Carter	203
Mariani, John T., M.A.....	Gugg.	101
Nye, Juanita, M.S.....	Crabbe	308
Olson, David, M.A.....	Crabbe	107
Platter, Allen, Ed.D.....	Gugg.	103
Reitze, Alberta, M.S.....	Pre-School	
	1919 10th Ave.	
Scamell, Evalyn, M.Ed.....	Gugg.	102
Schumacher, Herbert, M.F.A.....	Gugg.	103
Taylor, Jo Ann, M.A.....	Crabbe	307
Tryba, John, M.A.E.....	Gugg.	103

## EDUCATION

Kelly, Edward, Ph.D., Dean.....	Cranford	106
Anderson, Arthur L., M.A.....	Cranford	106
Anderson, Darrell, Ph.D.....	Gunter Annex	104A
Barnhart, Alvin E., Ed.D.....	Kepner	16
Blanchard, Howard, Ed.D.....	Gunter Annex	101
Bliler, Robert, M.S.....	B. Lehr	140
Bothell, John Ed.D.....	Cranford	105
Bourgeault, Stanley, Ed.D.....	B. Lehr	145D
Bowman, Harold, Ed.D.....	Carter	205
Cegelka, Walter, Ed.D.....	B. Lehr	142
Chaloupka, Donald, Ed.D.....	B. Lehr	108A
Chrismer, John M., Ed.D.....	Cranford	207
Clevenger, Susan, Ed.D.....	Gunter Annex	101
Claybaugh, Amos L., Ed.D.....	Cranford	100B
Collins, Harry, M.A.....	Frasier	105
Damgaard, John A., Ed.D.....	Cranford	207
Dunwell, Robert R., Ed.D.....	Cranford	201
Forgnone, Charles, M.A.....	B. Lehr	142
Fulbright, John, Ed.D.....	Gunter Annex	211
Gagon, Glen S., Ed.D.....	Cranford	114
Harkness, Marjorie, Ed.D.....	Cranford	106
Heimerl, Ramon P., Ph.D.....	Kepner	6B
Henkels, Milo, M.A.....	B. Lehr	136
Henry, Peggy, M.A.....	Cranford	106
Hillestad, Mildred, Ph.D.....	Cranford	209
Hillway, Tyrus, Ph.D.....	Cranford	201
Hogan, Kenneth, Ed.D.....	Kepner	13
Hughes, Herbert H., Ph.D.....	Kepner	113
Hunn, Bernice E., Ed.D.....	Cranford	106
Hunt, Hudine, M.A.....	B. Lehr	138
Kennedy, Calvin, Ph.D.....	Cranford	211
Kolstoe, Oliver P., Ph.D.....	B. Lehr	145A
Kopitz, Eugene D., Ph.D.....	Gunter Annex	211
Kramer, Klaas, Ph.D.....	Cranford	106
Lewis, Juanita, Ph.D.....	Cranford	100A
Lowry, Betty, Ph.D.....	Cranford	202
Luker, Arno H., Ed.D.....	Gunter Annex	102
Luketich, Donald, Ed.D.....	Kepner	16
Lutzy, Carol L., Ph.D.....	Gunter Annex	104B
McAless, Daniel, Ph.D.....	B. Lehr	142B
McIntyre, K. E., Ph.D.....	Cranford	106
Meier, John H., M.A.....	Gunter Annex	210
Montgomery, Lola J., Ed.D.....	Gunter Annex	104C
Morrison, Gaylord D., Ed.D.....	Cranford	A
Mosbo, Alvin O., Ed.D.....	Cranford	106
Moss, Robert H., Ed.D.....	Cranford	F
Mower, Morris, M.A.....	Cranford	106
Nebel, Dale, Ed.D.....	Cranford	106
Nelson, Theodore M., Ph.D.....	Cranford	103
Ninemires, Howard, M.A.....	Cranford	B
Partridge, Arthur, Ed.D.....	Kepner	103
Pierce, Keith A., Ed.D.....	Gunter Annex	101
Quinlan, Claire, Ph.D.....	Cranford	103
Rapp, William, Ed.D.....	Frasier	102
Reichert, Donald, M.A.....	Cranford	105
Smitherman, Donald W., Ph.D.....	B. Lehr	142
Stuckey, June E., Ph.D.....	Frasier	121
Tanner, Gerald, M.A.....	Frasier	121
Thames, James P., M.A.....	Cranford	207
Triplett, L. E., Ed.D.....	Cranford	106
Usher, Richard H., M.A.....	Gunter Annex	210
Van Maanen, Everett H., Ed.D.....	Cranford	E
Vaughan, Tony, Ed.D.....	B. Lehr	147
Waterman, Roland, Ed.D.....	Cranford	205
Weishahn, Mel, M.A.....	B. Lehr	130
Will, Ted, M.A.....	Cranford	207
Whorton, Gladys P., Ph.D.....	B. Lehr	145B
*Wolfe, Richard R., Ph.D.....	B. Lehr	145C
*Wood, C. David, Ed.D.....	Carter	205

\*Denotes guest and regular faculty not pictured.

Complete information, including academic rank and titles, may be found in the 1966-67 General Catalog.

Darrell Holmes, Ph.D., President.....	Frasier	203
Donald G. Decker, Ph.D., Sc.D., Dean of the College & Director of Summer School.....	Frasier	203
William F. Hartman, Ed.D., Director of Public Relations.....	Frasier	108
Norman T. Oppelt, Ph.D., Dean of Students.....	Frasier	119
Glen C. Turner, M.B.A., D.P.S., Controller.....	Frasier	5
George F. Sanderson, A.M., Registrar.....	Frasier	123
Frank P. Lakin, Ed.D., Administrative Assistant to the President.....	Frasier	201
George Leach, M.A., M.S., Assistant to the Dean of the College.....	Frasier	203

## LABORATORY SCHOOL

Kerns, LeRoy, Ed.D., Director.....	B. Lehr	112A
Benson, Charles, M.A., Principal, Ernest Horn Elementary School.....	B. Lehr	118
Bruce, Josephine, M.A.....	B. Lehr	122A
Gunning, Lelloine, M.A.....	B. Lehr	224A
Lindauer, Ivo E., M.A.....	B. Lehr	204A
Mueller, Louise S., M.A.....	B. Lehr	211
Neal, Louise, Ed.D.....	B. Lehr	113A
Schweers, Rex R., M.A.....	B. Lehr	203A
Shoemaker, Joseph, Ed.D.....	B. Lehr	103A
Trigg, Doris, M.S.....	B. Lehr	124A

## LIBRARY STAFF

Seager, Daniel A., M.A., Head Librarian.....	Carter	208
Bachenberg, Elmer, M.A.....	Carter	211
Brown, Lois, M.A.....	Carter	209
Costello, Virginia, M.A.....	Carter	401
Greer, James, M.A.....	Carter	211
Hall, Josephine, M.A.....	Carter	307
*Hill, Mrs. O. A., A.B.....	Carter	208
Koehmstedt, Carol, M.A.....	Carter	401
Kovacs, Gabor, M.A.....	Carter	207
*Maddox, Lucy, Ph.D.....	Carter	208
Richardson, Winnifred, M.A.....	Carter	211
Rider, Mary, A.B.....	Carter	401
Tilden, Vivian, M.A.....	Carter	211

## HEALTH, PHYSICAL EDUCATION AND RECREATION

Butler, L. C., Ed.D., Division Chairman.....	Gunter	109A
Barham, Jerry N., Ed.D.....	Gunter	103C
Benich, Thomas B., M.A.....	Gunter	B4
Best, Warren (Bud), M.A.....	Gunter	B4
Cyphers, Vincent A., Ed.D.....	Gunter	103B
Everett, Margaret E., Ph.D.....	Gunter	109C
Fri, Rosemary, M.A.....	Gunter	114
Hancock, John, M.A.....	Gunter	106
Heiss, William C., M.A.....	Gunter	3
Latham, Jessie, M.A.....	Gunter	109B
Lindahl, Virgil Y., M.A.....	Gunter	106
Notto, Carole Y., M.A.....	Gunter Annex	208
Pearson, George B., Ed.D.....	Gunter	103B
Rossi, Anthony, M.A.....	Gunter	B5
Sage, George, Ed.D.....	Gunter	B2
Shirley, Max, Ed.D.....	Gunter	103D
Staton, Wesley, Ed.D.....	Gunter	103C
Steffy, Doris, M.A.....	Gunter	109B
Van Anne, Nancy, Ph.D.....	Gunter	109C
Wright, Thurman N., Dir. of P.E.....	Gunter	B4

## HUMANITIES

Frease, Forrest W., Ph.D., Dean, Arts and Sciences.....	Carter	402
Ahlberg, Verne, M.A.....	Carter	402
Carriar, Shirley M., Ed.D.....	B. Lehr	206A
Cleere, Ford, M.A.....	Frasier	108
Crawford, Richard J. Ph.D.....	Kepner	106
Cross, Neal, Ed.D.....	Carter	402
DeBoer, Ray L., Ed.D.....	Kepner	104A
Freeman, Sam F., Ph.D.....	Carter	206
Gates, George G., Ed.D.....	Carter	306
Graham, Robert S., Ph.D.....	Cranford	210
Harrison, John, Ph.D.....	Carter	306
Holley, Donald L., Ed.D.....	Frasier	209
Huff, Chester C., Jr., M.A.....	Carter	504
Jamison, Frank R., M.S.....	Carter	205
Jones, Kenneth L., M.A.....	Frasier	68
Longwell, Robert L., M.A.....	B. Lehr	204A
Norton, Lloyd A., M.A.....	Frasier	68
Princic, Walter F., M.A.....	Carter	504
Starr, Wendell R., Ph.D.....	Carter	201A
Toussaint, Sylvester R., Ph.D.....	Kepner	208
Willcoxson, John W., III, Ph.D.....	Frasier	70
Wolfe, Welby B., Ed.D.....	Frasier	70

## MUSIC

Miller, James E., Ph.D., Division Chairman.....	Frasier	159
Baker, Edwin, M.Mus.....	Frasier	167
Bartlett, Loren, Ph.D.....	Frasier	170
*Duckworth, Guy, D.Mus.....	Frasier	159
Dykens, Dale, M.Mus.....	Frasier	156
Evans, Kenneth, Ph.D.....	Frasier	53
Fluke, John H., Ed.D.....	Frasier	166
Freeburg, Roy, M.A.....	Frasier	160
Garlick, Don, D.M.A.....	Frasier	52
Ginsburg, Blanche, B.A.....	Frasier	252
Goes, Derryl, M.A.....	Frasier	166
Hutcherson, Rita, Ph.D.....	Frasier	155
James, Robert, M.Mus.....	Frasier	48
King, Ralph R., Ed.D.....	Frasier	49
Konig, Doris, M.A.....	Frasier	160
Ludwig, Germaine, M.A.....	Frasier	153
Menk, Anthony, M.A.....	Frasier	151
Mickens, Howard M., M.Mus.....	Frasier	251
Mohr, E. E., Ed.D.....	Frasier	255
Nofziger, Dwight E., M.A.....	Frasier	250
Schenkman, Walter A., D.Mus.....	Frasier	152
Schmitz, Claude M., M.A.....	Frasier	150
Skinner, Howard, D.Mus.....	Frasier	254
Smith, Robert, Ed.D.....	Frasier	49

## NURSING

McMinn, Elaine, M.S., Division Chairman.....	Cranford	204
Carlson, Jean, M.S.....	Cranford	206
Hallan, Mabel, M.S.....	Cranford	206
Payton, Rita, M.S.....	Cranford	206
Rubenstein, Vera, M.Litt.....	Cranford	206
Sawatzky, Gordon, M.S.....	Cranford	206
Self, Evelyn, M.S.....	Cranford	206

## SCIENCE

Glidden, Harley, Ph.D., Division Chairman.....	Ross	138
Anders, Frank W., M.A.....	Ross	308
Cavanagh, Timothy, Ph.D.....	Ross	314
Crockett, George, M.A.....	Ross	345
Fields, Clark, Ph.D.....	Ross	131
Fisch, Forest N., M.A.....	Ross	323
Fry, Richard K., Ph.D.....	Ross	312
Hayes, Stuart, B.A.....	Ross	44
Johnson, Robert L., M.S.....	Ross	311
Koch, William G., Ph.D.....	Ross	137
*Lindsey, Donald L., Ph.D.....	Ross	328
Moinat, Arthur D., Ph.D.....	Ross	241
Olson, Kenneth V., Ph.D.....	Ross	350
Popejoy, William D., Ed.D.....	Ross	313
Rich, Royal, Ph.D.....	Ross	236
Schmidt, Gerald, Ph.D.....	Ross	239
Shropshire, K. Lee, M.S.....	Ross	335
Stamper, Maynard, Ph.D.....	Ross	243
Sund, Robert B., Ed.D.....	Ross	348
Thomas, Bert O., Ph.D.....	Ross	242
Tolar, Robert, M.A.....	Ross	310
Tollefson, Oscar, Ph.D.....	Ross	333
Tomasi, Gordon, Ph.D.....	Ross	135
Trowbridge, Leslie, Ph.D.....	Ross	349
Winchester, A. M., Ph.D.....	Ross	240
Woerner, Dale E., Ph.D.....	Ross	129

## SOCIAL SCIENCE

Reynolds, Arthur, Ph.D., Division Chairman.....	Kepner	201A
Arnold, Dean A., Ph.D.....	Kepner	202
*Barsky, A., Ph.D.....	Kepner	201
Boeck, George A., Ph.D.....	Kepner	212
Byerly, Benjamin, Ph.D.....	Kepner	119A
Christensen, Harold P., Ph.D.....	Kepner	202
*Davis, James N., Jr., Ph.D.....	Kepner	121
Denney, Evan, M.A.....	Kepner	220A
Farren, Jerry D., M.A.....	Kepner	220A
*Green, Olive.....	Kepner	201
Larson, Robert, Ph.D.....	Kepner	211
Matoren, Stanley, M.S.....	Kepner	122A
Menard, Orville D., Ph.D.....	Kepner	201A
Mickey, Barbara, Ph.D.....	Kepner	116
Mickey, John R., B.S.....	Kepner	116
Perchlik, Richard, Ed.D.....	Kepner	211
Pogue, Pauline C., M.A.....	Kepner	212
Quammen, Francis R., M.A.....	Kepner	202
Rubenstein, Frank, Ph.D.....	Kepner	121
Trainer, Orvel L., Ph.D.....	Kepner	121
West, Lee R., M.A.....	Kepner	217A
Willoughby, Gary, M.A.....	Kepner	122A



ADMINISTRATION



Holmes



Decker



Hartman



Oppelt



Turner



Sanderson



Lakin



Leach

ARTS



Perry  
Chairman



Ball



Blubaugh



Cadigan



Funderburk



Gleb

# Interdivisional--Arts

## 1966 Summer Class Schedule

Course	Section No.	Division, Time and Course Title	Hours Credit	Instructor	Days	Building and Room
--------	-------------	---------------------------------	--------------	------------	------	-------------------

### Interdivisional Courses

#### 7:10-8:00 a.m. — Interdivisional

ID	300- 1	Introduction to Graduate Study (Education)	3	Chaloupka	MWF	Bishop-L 166
ID	300-21	Introduction to Graduate Study (Music)	3	Mohr	MWF	Frasier 249
ID	300-31	Introduction to Graduate Study (Arts)	3	Perry	MWF	Gugg. 105
ID	0300- 1	Writing Laboratory for Graduate Students	0		MTWThF	Kepner 101

#### 8:10-9:00 a.m. — Interdivisional

ID	300- 2	Introduction to Graduate Study (HPER)	3	Butler	MWF	Gunter 201
ID	300-22	Introduction to Graduate Study (Education)	3	Chaloupka	MWF	Bishop-L 166
ID	300-32	Introduction to Graduate Study (HUM)	3	Frease, F.	MWF	Kepner 103
ID	300-42	Introduction to Graduate Study (Business)	3	Waterman	MWF	Kepner 105
ID	0300- 2	Writing Laboratory for Graduate Students	0		MTWThF	Kepner 101
ID	400- 2	Introduction to Doctoral Research	3	Hillway	MWF	Little Theater

#### 9:10-10:00 a.m. — Interdivisional

ID	0300- 3	Writing Laboratory for Graduate Students	0		MTWThF	Kepner 101
----	---------	--	---	--	--------	------------

#### 10:10-11:00 a.m. — Interdivisional

ID	0300- 4	Writing Laboratory for Graduate Students	0	Princic	MTWThF	Kepner 101
----	---------	--	---	---------	--------	------------

#### 11:10-12 noon — Interdivisional

ID	200- 5	American Speech for Foreign Students	0	Ahlberg	MTWThF	Kepner 120
----	--------	--------------------------------------	---	---------	--------	------------

#### 12:10-1:00 p.m. — Interdivisional

ID	0300- 6	Writing Laboratory for Graduate Students	0		MTWThF	Kepner 101
----	---------	--	---	--	--------	------------

#### 2:10-3:30 p.m. — Interdivisional

ID	300- 8	Introduction to Graduate Study (2:10-3:30 p.m.) (Social Science)	3	Quammen	MF	Kepner 119
----	--------	--	---	---------	----	------------

### Division of the Arts

#### Hours Arranged — Arts

HEC	261-70	Participation in Pre-School (Labs. 6 hrs. arr. M thru F between 9:10 and 11:00)	3	Reitze	MTWThF	Southard House
-----	--------	---	---	--------	--------	----------------

#### 7:10-8:00 a.m. — Arts

FA	13- 1	Lettering	2	Platter	TTh	Gugg. 201
FA	127- 1	Craft Techniques (Lab. 2 hrs. TTh 7:10-8:00)	3	Ball	MWF	Gugg. 206
FA	317- 1	Ceramics (Beginning Graduate Students Only; lab. 3 hrs. arr.)	3	Schumacher	MWF	Gugg. 2
FA	327- 1	Craft Activities for the Elementary School (Lab. 3 hrs. arr.)	3	Scamell	MWF	Gugg. 1
FA	335- 1	Advanced Life Drawing (Lab. 2 hrs. arr.)	2	Mariani	TTh	Gugg. 106
FA	336- 1	Advanced Drawing (Lab. 3 hrs. arr.)	3	Platter	MWF	Gugg. 201
HEC	219- 1	Infant and Child Care (Lab. 2 hrs. M-F arr. between 9:10 and 11:00)	4	Reitze	MWTh	Crabbe 304
HEC	295- 1	tailoring (Lab. 4 hrs. TTh 8:10-10:00, plus 2 hrs. arr.)	4	Nye, J.	TTh	Crabbe 301
IA	72- 1	Gas and Electric Welding (Labs. 2 hrs. TTh 11:10-12:00 or 1:10-2:00)	2	Kruger	TTh	Art Annex 100
IA	217- 1	Advanced Leathercraft (Labs. 3 hrs. M-F 8:10-9:00, or 9:10-10:00; MWF, 1:10-2:00)	3	Lubbers	MWF	Carter 203
IA	243- 1	Theory and Practice in Offset Lithography (Class meets from 7:10-8:30; labs, 3 hrs. TTh 8:30-10:00)	3	Gleb	TTh	Kepner 4
IA	272- 1	Advanced Gas and Electric Welding (Lab. 3 hrs. MWF 2:10-3:00)	3	Kruger	MWF	Art Annex 100
IA	330- 1	Organization and Administration in Industrial Arts	3	Jelden	MWF	Crabbe 106
IA	371- 1	Advanced Metal Craft Techniques (Lab. 3 hrs. MWF 8:10-9:00, 10:10-11:00, or 1:10-2:00)	3	Griffin	MWF	Art Annex 200

#### 8:10-9:00 a.m. — Arts

FA	11- 2	Introduction to Design (Lab. 5 hrs. arr.)	5	Blubaugh	MTWThF	Gugg. 1
FA	123- 2	Art Education for the Secondary School	3	Abbott	MWF	Gugg. 201
FA	124- 2	Elementary Art (Lab. 3 hrs. arr.)	3	Leacock	MWF	Gugg. 100
FA	125- 2	Methods of Teaching Art at the Elementary School (To be taken concurrently with FA 124-2)	2	Leacock	TTh	Gugg. 100
FA	209- 2	Print Making (Lab. 3 hrs. arr.)	3	Tryba	MWF	Gugg. 3
FA	315- 2	Craft Trends in the Secondary School (Lab. 2 hrs. arr.)	2	Ball	TTh	Gugg. 206
HEC	72- 2	Elementary Clothing Construction (Lab. 3 hrs. MWF 9:10-10:00)	3	Nye, J.	MWF	Crabbe 301
HEC	265- 2	The Family	3	Funderburk		Crabbe 206
HEC	279- 2	Preservation of Food I (Lab. 2 hrs. T 9:10-11:00)	2	Grable, J.	T	Crabbe 202
HEC	302- 2	Teaching Problems in Homemaking (June 20-July 15)	2	Hall, R.	MTWThF	Crabbe 304



# The Arts

## 1966 Summer Class Schedule

Course	Section No.	Division, Time and Course Title	Hours Credit	Instructor	Days	Building and Room
IA	250-2	Contemporary Furniture Design and Fabrication (Lab. 3 hrs. MWF 7:10-8:00, 11:10-12:00, 1:10-2:00)	3	Olson, D.	MWF	Crabbe 102
IA	274-2	Advanced Machine Tool Operation (Lab. 2 hrs. TTh 9:10-10:00)	2	Johnson, F. M.	TTh	Art Annex 100
IA	281-2	Problems in Teaching General Shop Electricity (Lab. 3 hrs. MWF 7:10-8:00, 1:10-2:00)	3	Lease	MWF	Art Annex 300
IA	290-2	Power and Transportation (Lab. 3 hrs. MWF 9:10-10:00)	3	Davis	MWF	Crabbe 106
IA	335-2	Philosophy of Industrial Arts	3	Perry	MWF	Gugg. 105
IA	374-2	Organization of the Metal Shop (Lab 3 hrs. MWF 11:10-12:00, 1:10-2:00)	3	Johnson, F. M.	MWF	Art Annex 100

### 9:10-10:00 a.m. — Arts

FA	108-3	Clay Modeling (Lab. 2 hrs. arr.)	2	Cantrell	TTh	Gugg. 2
FA	117-3	Pottery (Lab. 3 hrs. arr.)	3	Cantrell	MWF	Gugg. 2
FA	120-3	Introduction to Oil Painting (Lab. 3 hrs. arr.)	3	Tryba	MWF	Gugg. 200
FA	203-3	Watercolor Painting (Lab. 5 hrs. arr.)	5	Mariani	MTWThF	Gugg. 106
FA	223-3	Survey of Art	5	Green, W.	MTWThF	Gugg. 201
FA	240-3	Art in the 7th, 8th and 9th Grades (Lab. 5 hrs. arr.)	5	Blubaugh	MTWThF	Gugg. 1
FA	304-3	Seminar in Art Education	2	Scamell	TTh	Gugg. 100
FA	316-3	Crafts for the Secondary School (Lab. 3 hrs. arr.)	3	Ball	MWF	Gugg. 206
FA	324-3	Creative Activities in the Elementary School (Lab. 3 hrs. arr.)	3	Leacock	MWF	Gugg. 100
HEC	77-3	Family Meal Cookery and Service (Class meets from 9:10-11 M; Lab. 4 hrs. WF 9:10-11:00)	4	Grable, J.	M	Crabbe 202
HEC	209-3	New Trends in Nutrition	3	Funderburk	MWF	Crabbe 206
HEC	290-3	Applied Home Furnishings (Lab. 4 hrs. TTh 9:10-11:00)	3	Taylor	M	Crabbe 304
HEC	371-3	Advanced Textiles	3	Cadigan	MWF	Crabbe 306
HEC	398-3	Family Meal Management (Lab. 4 hrs. TTh 10:10-12:00)	4	Funderburk	TTh	Crabbe 206
IA	41-3	Graphic Arts Fundamentals (Lab. 3 hrs. TTh 9:10-10:00, 10:10-11:00)	3	Brown, J.	MWF	Kepner 4
IA	220-3	Course Organization in Industrial Arts	3	Jelden	MWF	Gugg. 105
IA	257-3	Construction Problems in Wood (Lab. 3 hrs. MWF 7:10-8:00, 11:10-12:00, 1:10-2:00)	3	Olson, D.	MWF	Crabbe 102
IA	275-3	Advanced Machine Shop Practice (Lab. 3 hrs. MWF 11:10-12:00, 1:10-2:00)	3	Johnson, F. M.	MWF	Art Annex 100
IA	373-3	Advanced Lapidary and Silver Crafts (Lab. 3 hrs. MWF 8:10-9:00, 10:10-11:00, 1:10-2:00)	3	Griffin	MWF	Art Annex 200
IA	380-3	Electronics (Lab. 3 hrs. MWF 7:10-8:00, 1:10-2:00)	5	Lease	MTWThF	Art Annex 300
ED	249-3	Principles of Vocational Education	3	Hall, R.	MWF	Crabbe 305

### 10:10-11:00 a.m. — Arts

FA	1-4	Drawing (Lab. 2 hrs. TTh 10:10-11:00)	3	Mariani	MWF	Gugg. 106
FA	54-4	Drawing and Painting Techniques (Lab. 3 hrs. arr.)	3	Platter	MWF	Gugg. 1
FA	124-4	Elementary Art (Lab. 3 hrs. arr.)	3	Leacock	MWF	Gugg. 100
FA	125-4	Methods of Teaching Art at the Elementary School (To be taken concurrently with FA 124-4)	2	Leacock	TTh	Gugg. 100
FA	126-4	Instructional Techniques in Art Education	3	Scamell	MWF	Gugg. 201
FA	219-4	The Silk Screen Printing Process (Lab. 3 hrs. arr.)	3	Ball	MWF	Gugg. 205
FA	225-4	Figure Painting (Lab. 4 hrs. arr.)	4	Green	MTWTh	Gugg. 200
FA	317-4	Ceramics (Advanced Graduate Students Only) (Lab. 3 hrs. arr.)	3	Schumacher	MWF	Gugg. 2
HEC	71-4	Textile Fundamentals	3	Taylor	MWF	Crabbe 306
HEC	274-4	Equipment Selection and Maintenance (Lab. 2 hrs. WF 11:10-12:00)	4	Cadigan	MWF	Crabbe 206
HEC	293-4	Adult Education in Homemaking	3	Hall, R.	MWF	Crabbe 304
HEC	307-4	Clothing Economics	3	Nye, J.	MWF	Crabbe 301
IA	264-4	Industrial Arts Design (Lab. 3 hrs. MWF, 8:10-9:00, 9:10-10:00, 1:10-2:00)	3	Lubbers	MWF	Carter 203
IA	274-4	Advanced Machine Tool Operation (Lab. 2 hrs. TTh 11:10-12:00, 1:10-2:00)	2	Kruger	TTh	Art Annex 100
IA	282-4	Motors, Generators, and Electrical Wiring (Lab. 2 hrs. TTh 7:10-8:00, 8:10-9:00)	2	Lease	TTh	Art Annex 300
IA	331-4	A Critique of Modern Industrial Arts (Class meets from 10:10-11:30)	3	Johnson, F. M.	TTh	Gugg. 105
IA	343-4	Organization of Graphics Arts Shop (Lab. 3 hrs. MWF 8:10-9:00, 1:10-2:00)	3	Gleb	MWF	Kepner 4
IA	351-4	Organization of the Wood Shop (Lab 3 hrs. MWF 7:10-8:00, 11:10-12:00, 1:10-2:00)	3	Olson, D.	MWF	Crabbe 102

### 11:10-12 noon — Arts

FA	105-5	Color Theory (Lab. 3 hrs. arr.)	3	Abbott	MWF	Gugg. 106
FA	212-5	Problems in Design (Lab. 3 hrs. arr.)	3	Blubaugh	MWF	Gugg. 1
FA	217-5	Pottery: Advanced Throwing (Lab. 3 hrs. arr.)	3	Schumacher	MWF	Gugg. 2
FA	301-5	Supervision of Art	3	Platter	MWF	Gugg. 201
FA	328-5	Curriculum in Art Education	3	Scamell	MWF	Gugg. 100
HEC	243-5	Art in Contemporary Living	3	Taylor	MWF	Crabbe 306
HEC	268-5	Family Housing	2	Taylor	TTh	Crabbe 306
HEC	284-5	Demonstration Techniques	2	Grable, J.	MTWF	Crabbe 202
HEC	303-5	Curriculum in Homemaking	4	Hall, R.	MTWF	Crabbe 304
IA	90-5	Power Fundamentals (Lab. 2 hrs. TTh 10:10-11:00)	2	Davis	TTh	Crabbe 106
IA	219-5	Advanced Plastics (Lab. 3 hrs. M-F 8:10-9:00, 9:10-10:00, or MWF 1:10-2:00)	3	Lubbers	MWF	Carter 203
IA	230-5	History of Industrial Arts	4	Griffin	MTThF	Crabbe 305



Grable



Green



Hall, R.



Jelden



Johnson



Kruger



Leacock



Lubbers



Mariani



Nye



Olson



Platter



Reitze



Scamell



Schumacher



Taylor





Tryba  
EDUCATION



Kelly  
Dean



Anderson, A.



Anderson, D.



Barnhart



Blanchard



Bliler



Bothell



Bourgeault



Bowman



Cegelka



Chaloupka



Chrismer



Claybaugh



Clevenger

# Arts--Education

## 1966 Summer Class Schedule

Course	Section No.	Division, Time and Course Title	Hours Credit	Instructor	Days	Building and Room
IA	241- 5	Copy Preparation and Camera Procedures (Lab. 3 hrs. MWF 8:10-9:00, 1:10-2:00)	3	Gleb	MWF	Kepner 4
IA	338- 5	Curriculum Development in Industrial Arts	3	Jelden	MWF	Gugg. 105
IA	362- 5	Problems in Drafting and Planning (Lab. 3 hrs. MWF 10:10-11:00)	3	Kruger	MWF	Art Annex 300
<b>1:10-2:00 p.m. — Arts</b>						
FA	208- 7	Sculpture (Lab. 3 hrs. arr.)	3	Cantrell	MWF	Gugg. 2
FA	302- 7	Trends in Art Education	2	Tryba	TTh	Gugg. 201
FA	320- 7	Advanced Oil Painting (Lab. 2 hrs. arr.)	2	Green	TTh	Gugg. 200
HEC	244- 7	Personal Improvement of the Teacher (June 20-July 1; Class meets 1:10-4:00)	3	Grable, J.	MTWThF	Crabbe 305
HEC	291- 7	Managing the Family Resources (July 5-July 15; Class meets 1:10-4:00 plus 3 hrs. arr.)	3	Cadigan	MTWThF	Crabbe 305
IA	254- 7	Seminar in Elementary School Industrial Arts (June 20-July 1; Class meets 1:10-4:00)	3	Brown, J.	MTWThF	Bishop-L 152
IA	330- 7	Organization and Administration of Industrial Education (July 11-July 22; Class meets 1:10-4:00)	3	Jelden	MTWThF	Kepner 118
IA	344- 7	Problems of Design in the Graphic Arts (August 1- August 12; Class meets 1:10-4:00)	3	Brown, J.	MTWThF	Kepner 4
<b>2:10-3:00 p.m. — Arts</b>						
FA	17- 8	Introduction to Pottery (Lab. 3 hrs. arr.)	3	Cantrell	MWF	Gugg. 2
FA	228- 8	Seminar in Secondary Art (June 20-July 1)	2	Abbott	MTWThF	Gugg. 1
FA	230- 8	Seminar in Elementary Art (July 11-July 22)	2	Abbott	MTWThF	Gugg. 1
FA	230-28	Seminar in Elementary Art (July 25-August 5)	2	Abbott	MTWThF	Gugg. 1
<b>3:10-4:00 p.m. — Arts</b>						
FA	232- 9	Advanced Science Design	3	Wolfe, W.	MWF	Frasier 171

## School of Education

### Hours Arranged — Education

139-70	Introduction to Student Teaching in the Elementary School (ATE) (Four hours per week arranged with instructor) (Instructor determined by grade level or assignment. One additional hour per week for conference.)	2	Lab. School Staff	Arr.	Bishop-Lehr	
PCG 390-70	Internship in School Psychology (Permission by instructor; maximum 8 quarter hours.)	8	Anderson, D.	Arr.	Gunter Annex 105	
SPED 201-16	Workshop in Special Education (2 hrs. of lab. arr. each day) (To be taken in conjunction SPED 211) (Class meets from 10:30-12:00, June 27-July 22)	5	Pasch	MTWThF	State Home & Training School Wheat Ridge, Colo.	
SPED 211-17	Education of Severely Mentally Retarded Children (2 hrs. of lab arr. each day) (To be taken in conjunction SPED 201) (Class meets from 8:45-10:15, June 27-July 22)	3	Pasch	MTWThF	State Home & Training School Wheat Ridge, Colo.	
<b>7:10-8:00 a.m. — Education</b>						
101- 1	Basic Concepts of Education (ATE)	5	Ninemires	MTWThF	Frasier 148	
109- 1	Teaching Handwriting and Spelling in the Elementary School (ATE)	2	Trigg	TTh	Kepner 11	
113- 1	Improvement of Instruction in Social Studies in the Elementary School (ATE)	3	Harkness	MWF	Kepner 11	
206- 1	Audio-Visual Materials in Education (Class also meets on TTh at 8:10 in Little Theater, plus 1 additional hour for lab. to be arranged)	4	Bowman	MW	Carter 202	
222- 1	Reading in the Primary Grades (ATE)	3	Henry	MWF	Cranford 101A	
295- 1	Philosophy of Education (ATE)	3	Reichert	MWF	Little Theater	
302- 1	Seminar in Evaluating and Improving Junior High School Instructional Programs	3	Kerns	MWF	Kepner 204	
309- 1	Supervision of Handwriting and Spelling in the Elementary School (Graduates only)	2	Anderson, A.	TTh	Kepner 119	
310- 1	Supervision of Instruction in Reading in the Elementary School (Graduates only)	3	Hunn	MWF	Cranford 100A	
311- 1	Supervision of Instruction in English in the Elementary School (Graduates only)	3	Mosbo	MWF	Ross 300	
314- 1	The Elementary School Curriculum (Graduates only)	3	Lowry	MWF	Kepner 214	
320- 1	Analysis of Reading Methods (Graduates only)	3	Claybaugh Triplett	MWF	Cranford 104	
325- 1	Remedial Reading Case Study (Permission of instructor)	3	Claybaugh Triplett	T	Cranford 104	
326- 1	Remedial Reading Internship (Permission of instructor)	3	Triplett	Th	Cranford 104	
343- 1	School Finance	3	Barnhart	MWF	Kepner 119	
367- 1	Reconstructing Secondary Education	3	Morrison	MWF	Kepner 108	
396- 1	Historical Foundations of Education	3	Bothell	MWF	Kepner 210	
BUS 150- 1	Business Statistics I	3	Thames	MWF	Kepner 105	
BUS 250- 1	Financial Management	3	Will	MWF	Frasier 101	
BUS 287- 1	Electronic Data Processing	3	Damgaard	MWF	Kepner 216	
BUS 341- 1	Foundations of Business (Class meets 7:10-8:25)	3	Will	TTh	Frasier 101	
BUED 266- 1	Development of Distributive Education Instructional Materials	2	Chrismer	TTh	Kepner 105	
LS 284- 1	The Librarian and Reading Guidance for Youth	5	Hill, O.	MTWThF	Carter 201	



# Education

## 1966 Summer Class Schedule

Course	Section No.	Division, Time and Course Title	Hours Credit	Instructor	Days	Building and Room
PCG	170-1	Introduction to Measurement and Evaluation (Class meets 7:10-8:30)	3		TTh	Gunter Annex 103
PCG	314-1	Techniques in Group Guidance	3	Montgomery, L.	MWF	Kepner 207
PCG	317-1	Foundations of Guidance	3	Blanchard	MWF	Kepner 124
PCG	340-1	Theories of Learning	5		MTWThF	Gunter Annex 5
PCG	370-1	Principles and Practices in Testing and Measurement	3	Clevenger	MWF	Gunter Annex 103
PCG	388-1	Abnormal Psychology	3	Anderson, D.	MWF	Gunter Annex 105
SPED	200-1	The Education of Exceptional Children	3	Kolstoe	MWF	Bishop-L 202
SPED	210-1	Introduction to Mental Retardation (Class meets 7:10-9:00)	4	Rapp	TTh	Bishop-L 203
SPED	211-1	Education of Severely Mentally Retarded Children	3	Cornett	MWF	Kepner 218
SPED	243-1	Beginning Braille	3	Weishahn	MWF	Bishop-L 135
SPED	250-1	Pathology and Introduction to Education of the Deaf	3	Henkels	MWF	Bishop-L 203
SPED	343-1	Advanced Braille	3		MWF	Bishop-L 130
SPED	345-1	Principles of Orientation and Mobility for the Blind (Class meets 7:10-8:30)	3		TTh	Bishop-L 135
<b>8:10-9:00 a.m. — Education</b>						
	101-2	Basic Concepts of Education (ATE)	5	Ninemires	MTWThF	Kepner 207
	110-2	Improvement of Instruction in Reading in the Elementary School (ATE)	3	Mower	MWF	Cranford 101A
	206-2	Audio-Visual Materials in Education (Class also meets on TTh at 8:10 in Little Theater plus 1 additional hour for Lab. to be arranged.)	4	Wood	MW	Carter 202
	309-2	Supervision of Handwriting and Spelling in Elementary School (Graduates only)	2	Anderson, A.	TTh	Kepner 108
	310-2	Supervision of Instruction in Reading in the Elementary School (Graduates only)	3	Hunn	MWF	Cranford 100A
	311-2	Supervision of Instruction in English in the Elementary School (Graduates only)	3	Mosbo	MWF	Ross 300
	322-2	Seminar in Elementary School Mathematics (Graduates only; prerequisites ED 112, 312 or permission of instructor)	3	Kramer	MWF	Frasier 249
	324-2	Remedial Reading in the Elementary School (Theory) (Graduates only)	2	Mower	TTh	Cranford 101A
	348-2	School Law II	3	Partridge	MWF	Kepner 9
	351-2	Supervision of Student Teachers	3	Van Maanen	MWF	Crabbe 306
	380-2	Philosophy and Principles of Outdoor Education	3	Cyphers	MWF	Crabbe 305
	443-2	Seminar in Administration (Class meets 8:10-9:30)	3	Partridge	TTh	Kepner 217
	443-22	Seminar in Administration (Class meets 8:10-9:30)	3	Moss	TTh	Kepner 120
BUS	125-2	Business Finance	3	Will	MWF	Frasier 101
BUED	277-2	Adult Programs in Business Education	2	Chrismer	TTh	Kepner 105
BUED	280-2	Workshop in Business Education: Colorado Industries (June 6-June 17) (Class meets 8:10-4:00)	3	Waterman	MTWThF	Cranford 213
BUED	401-2	Analysis of Research in Business Education	5	Hillestad	MTWThF	Kepner 216
CSPW	355-2	Student Government, Activities and Sponsorship	3	Tanner-Oppelt	MWF	Gunter Annex 103
CSPW	452-2	Current Issues in College Student Personnel Work (Class meets from 8:10-9:30)	3	Stuckey	TTh	Gunter Annex 105
LS	283-2	Book Selection for School Libraries	5	Hill	MTWThF	Carter 201
PCG	101-2	Guidance in the Classroom (Class meets 8:10-9:30)	3		TTh	Kepner 124
PCG	222-2	Seminar: Psychological Issues (Class meets 8:10-9:30)	3	Meier	TTh	Gunter Annex 5
PCG	280-2	Personality Development	3	Usher	MWF	Gunter Annex 5
PCG	331-2	Child Psychology	3	Pierce	MWF	Kepner 124
SPED	241-2	Survey of Education of Visually Handicapped	3	Bourgeault	MWF	Bishop-L 203
SPED	245-2	Secondary Methods for the Blind	3		MWF	Bishop-L 132
SPED	257-2	Speech Reading	3	Whorton	MWF	Kepner 204
SPED	270-2	Audiology	3	Hunt	MWF	Bishop-L 202
SPED	302-2	Appraisal of Exceptional Children	4	Forgnone	MTWThF	Bishop-L 200
SPED	390-2	Introduction to Rehabilitation	3	Wolfe, R.	MWF	Bishop-L 206
<b>9:10-10:00 a.m. — Education</b>						
	222-3	Reading in the Primary Grades (ATE)	3	Lewis	MWF	Cranford 101A
	223-3	Reading in The Intermediate Grades (ATE)	3	Harkness	MWF	Cranford 100A
	312-3	Supervision of Instruction in Mathematics in the Elementary School (Graduates only)	3	Kramer	MWF	Kepner 207
	315-3	Supervision of Instruction in Children's Literature (Graduates only)	2	Lewis	TTh	Cranford 101A
	320-3	Analysis of Reading Methods (Graduates only; prerequisites ED 110, 310 or permission of instructor)	3	Claybaugh	MWF	Cranford 104
	323-3	Seminar in Elementary School Social Studies (Graduates only; prerequisite ED 113, 313 or permission of instructor)	3	Kelly	MWF	Kepner 218
	330-3	Foundations of Curriculum Development	3	Dunwell	MWF	Frasier 249
	344-3	School Plant Planning	3	Luketich	MWF	Frasier 169
	352-3	Student Supervision (permission of instructor)	3	Van Maanen	MWF	Kepner 6
	369-3	Experimentation in Education	3	Kerns	MWF	Carter 305
	395-3	Philosophy of Education	3	Reichert	MWF	Kepner 205
	493-3	The College and University Curriculum	3	Hillway	MWF	Kepner 210
BUS	115-3	Business Communications	3	Thames	MWF	Cranford 213
BUS	285-3	Systems and Procedures	3	Damgaard	MWF	Kepner 105
BUS	376-3	Marketing Strategy (Class meets 9:10-10:25)	3	Will	TTh	Kepner 105
BUED	371-3	Tests and Measurements in Business Education	5	Hillestad	MTWThF	Frasier 101



Collins



Damgaard



Dunwell



Forgnone



Fulbright



Gagon



Harkness



Heimerl



Henkels



Hillestad



Hillway



Hogan



Hughes



Hunn



Hunt



Kennedy



# Education

## 1966 Summer Class Schedule

Course	Section No.	Division, Time and Course Title	Hours Credit	Instructor	Days	Building and Room
BUED	402- 3	Issues and Trends in Business Education	3	Heimerl	MWF	Kepner 216
CSPW	252- 3	Workshop for Residence Hall Directors and Housemothers (Class meets from 9:10-4:00) (June 19-June 24)	2	Tanner-Stuckey	MTWThF	Faculty Lounge
LS	280- 3	Organization and Administration of A School Library	5	Hill	MTWThF	Carter 201
PCG	230- 3	Psychology of Childhood and Adolescence	3	Fulbright	MWF	Gunter Annex 5
PCG	275- 3	Experimentation in Psychology (Class meets 9:10-10:30)	3	Hughes	TTh	Kepner 210
PCG	313- 3	Occupational Information and Analysis in Vocational Guidance	3	Pierce	MWF	Kepner 9
PCG	315- 3	Counseling Theory and Techniques	3		MWF	Kepner 124
PCG	370- 3	Principles and Practices in Testing and Measurement	3	Clevenger	MWF	Gunter Annex 103
SPED	200- 3	The Education of Exceptional Children	3	Forgnone	MWF	Bishop-L 202
SPED	212- 3	Curriculum Development and Methodology for Mentally Retarded (Class meets 9:10-11:00)	4		TTh	Bishop-L 203
SPED	252- 3	Language Development for Acoustically Handicapped Children (Class meets 9:10-11:00)	6	Henkels	MWF	Bishop-L 203
SPED	264- 3	Speech Correction in the Classroom	3	Bliler	MWF	Bishop-L 204
SPED	402- 3	Problem Seminar in Special Education	3	Kolstoe	MWF	Gunter Annex 105

### 10:10-11:00 a.m. — Education

	109- 4	Teaching Handwriting and Spelling in the Elementary School (ATE)	2	Anderson, A.	TTh	Kepner 217
	112- 4	Improvement of Instruction in Mathematics in the Elementary School (ATE)	3	Nebel	MWF	Ross L105
	207- 4	Audio-Visual Administration Workshop	3	Bowman	MWF	Carter 204
	208- 4	Local Production of Audio-Visual Instructional Materials	3	Wood	MWF	Carter 202
	227- 4	Kindergarten Education (ATE)	3	Lewis	MWF	Cranford 101A
	310- 4	Supervision of Instruction in Reading in the Elementary School (Graduates only)	3	Hunn	MWF	Cranford 100A
	315- 4	Supervision of Instruction in Children's Literature (Graduates only)	2	Lewis	TTh	Cranford 101A
	321- 4	Seminar in Elementary School English (Graduates only; prerequisites ED 111, 311 or permission of Instructor)	3	Anderson, A.	MWF	Kepner 205
	355- 4	Organization, Administration, and Supervision of the Elementary School (Class meets 10:10-11:30)	4	Barnhart	TTh	Kepner 108
	355-24	Organization, Administration, and Supervision of the Elementary School (Class meets 10:10-11:30 a.m.)	4	Hogan	TTh	Kepner 222
	365- 4	Secondary School Organization, Administration and Supervision (Class meets 10:10-11:30)	4	Luketich	TTh	Kepner 9
	365-24	Secondary School Organization, Administration and Supervision (Class meets 10:10-11:30 a.m.)	4	Dunwell	TTh	Kepner 11
	461- 4	Philosophical Foundations of Education	3	Bothell	MWF	Frasier 249
	462- 4	Psychological Foundations of Education	3	Lutey	MWF	Kepner 124
	463- 4	Sociological Foundations of Education	3	Reichert	MWF	Kepner 218
BUS	20- 4	Principles of Accounting I	4	Kennedy	MTWTh	Frasier 101
BUS	358- 4	Advertising Strategy	3	Chrismser	MWF	Kepner 105
BUED	372- 4	Curriculum Construction in Business Education	5	Heimerl	MTWThF	Kepner 216
CSPW	358- 4	Internship in College Student Personnel Work (Class meets 10:10-12:00; permission of instructor)	2	Quinlan	T	Kepner 124
CSPW	451- 4	Organization and Administration of College Student Personnel Work	3	Nelson	MWF	Gunter Annex 105
LS	282- 4	Reference Material for School Libraries	5		MTWThF	Carter 201
PCG	285- 4	Mental Hygiene and Emotional Adjustment	3	Montgomery, L.	MWF	Kepner 214
PCG	311- 4	Organization and Administration of Guidance Services	3	Blanchard	MWF	Kepner 108
PCG	340- 4	Theories of Learning	5		MTWThF	Gunter Annex 5
PCG	370- 4	Principles and Practices in Testing and Measurement	3	Meier	MWF	Gunter Annex 103
PCG	374- 4	Supervised Practice in the Use of Individual Tests of Intelligence (Permission by instructor; class meets 10:10-12:00)	4	Lutey	TTh	Gunter Annex 105
PCG	374-24	Supervised Practice in the Use of Individual Tests of Intelligence (Permission of instructor; class meets from 10:10-12:00)	4		TTh	Gunter Annex 103
SPED	242- 4	Principles of Education of the Partially Seeing	3	Bourgeault	MWF	Bishop-L 205
SPED	273- 4	The Hearing Mechanism	3	Hunt	MWF	Crabbe 305
SPED	280- 4	Education of Children with Special Abilities	3		MWF	Bishop-L 202
SPED	363- 4	The Theory and Treatment of Stuttering	3	Bliler	MWF	Bishop-L 204
SPED	395- 4	Seminar in Rehabilitation: Specific Disability Areas (Class meets 10:10-11:30 TTh)	3	Wolfe, R.	TTh	Bishop-L 200

### 11:10-12 noon — Education

	111- 5	Improvement of Instruction in English in the Elementary School (ATE)	3	Anderson, A.	MWF	Frasier 148
	223- 5	Reading in the Intermediate Grades (ATE)	3	Harkness	MWF	Cranford 100A
	295- 5	Philosophy of Education (ATE)	3	Bothell	MWF	Kepner 214
	314- 5	The Elementary School Curriculum (Graduates only)	3	Nebel	MWF	Ross 300
	319- 5	Curriculum in the Junior High School	3	Kerns	MWF	Kepner 207
	327- 5	Reading Clinic Internship (Permission of instructor)	3	Mower	T	Cranford 104
	331- 5	Advanced Curriculum Construction	3	Dunwell	MWF	Carter 202
	494- 5	College Administration	3	Hillway	MWF	Kepner 108
BUS	131- 5	Business Law II	5	Damgaard	MTWThF	Kepner 216



Kolstoe



Koplitz



Kramer



Lewis



Lowry



Luker



Luketich



Lutey



McAlees



Meier



Montgomery



Morrison



Mosbo



Moss



Mower



Nelson



# Education

## 1966 Summer Class Schedule



Ninemires



Partridge



Pierce



Quinlan



Rapp



Reichert



Smitherman



Stuckey



Thames



Tanner



Usher



Van Maanen



Vaughan



Waterman



Weishahn



Will

Course	Section No.	Division, Time and Course Title	Hours Credit	Instructor	Days	Building and Room
BUS	228-5	Federal Income Tax Accounting	3	Kennedy	MWF	Frasier 101
BUS	252-5	Office Management	3	Thames	MWF	Kepner 105
BUED	357-5	Improvement of Instruction in Typewriting	2	Hillestad	TTh	Cranford 213
BUED	374-5	Cooperative Programs in Business Education	2	Chrismer	TTh	Kepner 105
LS	281-5	Classification and Cataloging	5		MTWThF	Carter 201
PCG	140-5	Educational Psychology (ATE)	5	Fulbright	MTWThF	Frasier 249
PCG	201-5	Guidance in the Elementary School	3	Pierce	MWF	Gunter Annex 5
PCG	314-5	Techniques in Group Guidance (11:10-12:30)	3	Montgomery, L.	TTh	Gunter Annex 5
PCG	315-5	Counseling Theory and Techniques	3	Usher	MWF	Kepner 124
PCG	347-5	Learning Problems: Diagnosis and Remediation.	3	Meier	MWF	Gunter Annex 103
PCG	373-5	Individual Tests of Intelligence	3	Lutey	MWF	Kepner 125
PCG	422-5	Seminar: Issues in Psychology, Counseling and Guidance	3	Luker	MWF	Kepner 9
SPED	210-5	Introduction to Mental Retardation (Class meets 11:10-1:00)	4	Rapp	TTh	Bishop-L 203
SPED	230-5	Care and Pathology of the Physically Handicapped	3	Peterson	MWF	Carter 305
SPED	244-5	Elementary Methods for the Blind	3	Bourgeault	MWF	Bishop-L 205
SPED	253-5	Methods of Teaching Content Subjects to the Deaf	3	Henkels	MWF	Bishop-L 203
SPED	261-5	Speech Pathology II	3	Bliler	MWF	Bishop-L 206
SPED	311-5	Workshop for the Vocational Rehabilitation of Mentally Retarded Youth	3	McAlees	MWF	Bishop-L 200
SPED	312-5	Advanced Curriculum Development	4		MTWF	Kepner 205
SPED	371-5	Clinical Study in Communication Problems	3	Hunt	MWF	Bishop-L 140
<b>12:10-1:00 p.m. — Education</b>						
	313-6	Supervision of Instruction in Social Studies in the Elementary School (Graduates only)	3	Lowry	MWF	Frasier 249
	316-6	Secondary Education	3	Kerns	MWF	Kepner 216
	342-6	School Administration—Federal, State, Local	3	Luketich	MWF	Kepner 214
	342-26	School Administration—Federal, State, Local	3	Moss	MWF	Kepner 214
	398-6	Current Educational Trends and Issues	3	Morrison	MWF	Kepner 219
PCG	317-6	Foundations of Guidance	3	Blanchard	MWF	Gunter Annex 5
PCG	371-6	Aptitude and Achievement Analysis	5	Koplitz	MTWThF	Kepner 124
SPED	256-6	Education of Hard-of-Hearing Child	3	Whorton	MWF	Bishop-L 205
SPED	392-6	Vocational Placement and Adjustment of the Disabled in Rehabilitation	3	Wolfe, R.	MWF	Bishop-L 202
SPED	410-6	Sociological and Educational Aspects of Mental Retardation	4	Cegelka	MTWF	Bishop-L 204
<b>1:10-2:00 p.m. — Education</b>						
	110-7	Improvement of Instruction in Reading in the Elementary School (ATE)	3	Mower	MWF	Cranford 101A
	113-7	Improvement of Instruction in Social Studies in the Elementary School (ATE)	3	Gunning	MWF	Kepner 9
	115-7	Literature in the Elementary School (ATE)	2	Henry	TTh	Cranford 101A
	200-7	Education Workshop Elementary School Modern Mathematics (June 20-July 1; class meets 1:10-4:00)	3	Kramer	MTWThF	Ross L104
	200-27	Education Workshop: Elementary School Reading (July 5-July 15; class meets 1:10-4:00) (Class will also meet on Saturday, July 9 from 9:00 to 12:00)	3	Claybaugh	MTWThF	McCowan Dining Hall
	200-37	Education Workshop: Library Science (June 20-July 1; class meets from 1:10-4:00)	3	Maddox	MTWThF	Carter 201
	200-47	Education Workshop: Outdoor Education (June 20-July 1; class meets from 1:10-4:00)	3	Cyphers	MTWThF	Gunter 201
	200-57	Education Workshop: New Ideas and Procedures in Education (June 27-July 1; class meets 1:30-4:30)	2	Dunwell	MTWThF	John Evans Jr. High School
	200-67	Education Workshop: Professional Negotiations (July 18-July 22; class meets 1:30-4:30)	2	Hartman-Cleere-Partridge	MTWThF	Greeley West High School
	200-77	Education Workshop: Elementary Principals' Workshop (June 27-July 1; class meets 1:00-5:00 p.m.)	2	McIntyre	MTWThF	Bishop-L 164
	200-87	Education Workshop: Workshop for School Publications Sponsors (June 20-June 24; class meets 1:10-5:00 p.m.)	2	Hartman-Grabill	MTWThF	Cache la Poudre Office
	206-7	Audio-Visual Materials in Education (Class also meets 8:10-9:00 TTh Little Theater, plus 1 additional hr. Lab. arr.)	4	Wood	MW	Carter 202
	237-7	Comparative Education	3	Morrison	MWF	Kepner 207
	308-7	Production of Photographic Teaching Materials (Class meets 1:10-3:00)	3	Bowman	MW	Carter 204
	312-7	Supervision of Instruction in Mathematics in the Elementary School (Graduates only)	3	Nebel	MWF	Ross L106
	313-7	Supervision of Instruction in Social Studies in the Elementary School (Graduates only)	3	Lowry	MWF	Frasier 148
	324-7	Remedial Reading in the Elementary School (Theory) (Graduates only)	2	Mower	TTh	Cranford 100A
	420-7	Seminar in Research (Class meets from 1:10-4:00)	0	Hughes	M	Gunter Annex 105
	443-7	Seminar in Administration (Class meets 1:10-4:00)	3	Partridge	M	Kepner 108
	443-27	Seminar in Administration (Class meets 1:10-4:00)	3	Barnhart	T	Kepner 108
	444-7	Advanced Seminar in Administration (Class meets 1:10-4:00)	3	Moss	M	Kepner 218
BUS	254-7	Investments	3	Thames	MWF	Kepner 105



# Education-- HPER

## 1966 Summer Class Schedule



Whorton



Wood

### LIBRARY STAFF



Seager  
Head Librarian



Bachenburg



Brown



Costello



Greer



Hall, J.



Koehmstedt



Kovacs



Richardson



Rider



Tilden

### LABORATORY SCHOOL



Kerns  
Director



Benson

Course	Section No.	Division, Time and Course Title	Hours Credit	Instructor	Days	Building and Room
BUS	320- 7	Management Accounting	5	Kennedy	MTWThF	Frasier 101
CSPW	356- 7	Job Placement (Class meets 1:10-4:00) (July 25-August 5)	3	Hogan	MTWThF	Carter 305
CSPW	357- 7	Financial Aids (Class meets 1:10-4:00) June 20-July 8)	3	Quinlan-Collins	MTWThF	Carter 305
PCG	20- 7	General Psychology	3	Fulbright	MWF	Kepner 122
PCG	20-27	General Psychology	3	Fulbright	MWF	Kepner 11
PCG	387- 7	Seminar in School Psychology (Class meets 1:10-4:30)	4	Anderson, D.	T	Gunter Annex 105
PCG	415- 7	Supervised Practice in Counseling (Permission of instructor)	3	Luker	MWF	Gunter Annex 5
FCG	415-27	Supervised Practice in Counseling (Permission of instructor)	3	Koplitz	MWF	Gunter Annex 103
PCG	415-37	Supervised Practice in Counseling (Permission of instructor)	3	Usher	MWF	Gunter Annex 6
PCG	415-47	Supervised Practice in Counseling (Permission of instructor)	3	Meier	MWF	Gunter Annex 8
PCG	415-57	Supervised Practice in Counseling (Permission of instructor)	3	Montgomery, L.	MWF	Cranford 200A
PCG	415-67	Supervised Practice in Counseling (Permission of instructor)	3		MWF	Cranford 100A
FCG	415-77	Supervised Practice in Counseling (Permission of instructor)	3	Pierce	MWF	Cranford 203
PCG	415-87	Supervised Practice in Counseling (Permission of instructor)	3		MWF	Kepner 204
SPED	202- 7	Counseling Parents of Exceptional Children	3	Cegelka	MWF	Bishop-L 203
SPED	220- 7	Introduction to the Education of Socially and Emotionally Disturbed Children	3	Smitherman	MWF	Ross 300
SPED	265- 7	The Auditory and Speech Mechanisms	3	Bliler	MWF	Bishop-L 205

### 2:10-3:00 p.m. — Education

	112- 8	Improvement of Instruction in Mathematics in the Elementary School (ATE)	3	Benson	MWF	Kepner 206
	115- 8	Literature in the Elementary School (ATE)	2	Henry	TTh	Cranford 100A
	314- 8	The Elementary School Curriculum (Graduates only)	3	Nebel	MWF	Ross 300
BUS	164- 8	Marketing	3		MWF	Kepner 216
BUED	230- 8	Economic Education Seminar (Class meets 2:10-5:00) (August 1-August 12)	3		MTWThF	Kepner 105
EUED	281- 8	Workshop in Distributive Education (Class meets 2:10-5:00) (June 20-July 1)	3	Chrismer	MTWThF	Kepner 105
BUED	358- 8	Improvement of Instruction in Basic Business (Class meets 2:10-4:00) (July 11-July 22)	2	Heimerl	MTWThF	Kepner 105
PCG	21- 8	General Psychology and Human Performance	3	Fulbright	MWF	Kepner 11
PCG	214- 8	Guidance Workshop (Class meets 2:10-5:00) (June 20-July 1)	3	Clevenger	MTWThF	Frasier 249
PCG	240- 8	Psychology of Learning	3		MWF	Kepner 124
PCG	334- 8	Psychology of Individual Differences	3		MWF	Gunter Annex 5
PCG	380- 8	Theories of Personality	3	Usher	MWF	Frasier 205
SPED	221- 8	Methods of Teaching Classes of Socially and Emotionally Maladjusted Children	3	Smitherman	MWF	Ross L106
SPED	262- 8	Clinical Practice in Speech Correction	2	Bliler	Arr.	Bishop-L 140
SPED	274- 8	Practicum in Audiology	3	Hunt	Arr.	Bishop-L 138
SPED	314- 8	Practicum with the Mentally Retarded	6	Zeitlow	Arr.	Bishop-Lehr 133
SPED	314-28	Practicum with the Mentally Retarded	6	Cassidy	Arr.	Bishop-Lehr 135
SPED	314-38	Practicum with the Mentally Retarded	6	Schimke	Arr.	Bishop-Lehr 141
SPED	314-48	Practicum with the Mentally Retarded	6		Arr.	Bishop-Lehr 137
SPED	334- 8	Practicum with Physically Handicapped	6		Arr.	Bishop-L 130
SPED	344- 8	Practicum with Visually Handicapped	6	Weishahn	Arr.	Bishop-L 130
SPED	394- 8	Supervised Clinical Practice in Rehabilitation Counseling (400 clock hours field work)	16	McAlees	Arr.	Bishop-L 142

### 3:10-4:00 p.m. — Education

BUS	72- 9	Salesmanship	3		MWF	Kepner 216
-----	-------	--------------	---	--	-----	------------

### 4:10-5:00 p.m. — Education

BUS	286-10	Business Data Processing—Unit Record (Class meets 4:10-5:25)	3	Damgaard	TTh	Kepner 216
-----	--------	--	---	----------	-----	------------

### 7:00-10:00 p.m. — Education

SPED	240-13	Structure and Function of the Eye (Class meets 7:00-10:00 p.m.)	3	Droegemueller	T	Frasier 169
------	--------	---	---	---------------	---	-------------

## Division of Health, Physical Education and Recreation

### 7:10-8:00 a.m. — HPER

16- 1	Beginning Golf (7:00-9:00; fee req.)	1	Benich	T	Men's Gym
16-21	Beginning Golf (7:00-9:00; fee req.)	1	Benich	W	Men's Gym
61- 1	Personal and Community Health	3	Heiss	MWF	Gunter 203
62- 1	First Aid	2	Heiss	TTh	Gunter 203
120- 1	Applied Human Anatomy	5	Van Anne	MTWThF	Gunter 205
252- 1	Internship in Recreation	15	Staff	MTWThF	Gunter 103
271- 1	Safety Education	3	Lindahl	MWF	Gunter 201
375- 1	Areas and Facilities in Physical Education and Recreation	4	Shirley	MTWF	Frasier 205



# HPER

## 1966 Summer Class Schedule

Course	Section No.	Division, Time and Course Title	Hours Credit	Instructor	Days	Building and Room
<b>8:10-9:00 a.m. — HPER</b>						
12-2		Tennis (Men and Women)	1	Heiss	MWF	Courts
20-2		Beginning Bowling (fee req.)	1		TTh	College Alleys Center
61-2		Personal and Community Health	3	Wright	MWF	Frasier 205
62-2		First Aid	2	Heiss	TTh	Frasier 205
88-2		Physical Education Activities for the Elementary School	2		MTWThF	Men's Gym
101-2		Health Education in the Elementary School	2	Steffy	TTh	Gunter 201
272-2		Recreation Leadership	3	Shirley	MWF	Gunter 107
312-2		Evaluation in Health, Physical Education, and Recreation	4	Everett	MTThF	Gunter 203
325-2		Physiology of Exercise	4	Van Anne	MTThF	Gunter 205
<b>9:10-10:00 a.m. — HPER</b>						
12-3		Tennis (Men and Women)	1	Heiss	MWF	Courts
20-3		Beginning Bowling (fee req.)	1	Benich	TTh	College Alleys Center
33-3		Beginning Social Dance	1	Notto	TTh	Ballroom
62-3		First Aid	2	Wright	TTh	Gunter 205
74-3		Theory and Practice of Swimming (Men)	1	Best	MTWTh	Pool
75-3		Theory and Practice of Wrestling (Men)	1	Hancock	MTWTh	Gunter 202
88-3		Physical Education Activities for the Elementary School	2	Steffy	MTWThF	Gunter 107
101-3		Health Education in the Elementary School	2	Latham	TTh	Kepner 122
102-3		Health Education in the Secondary School	4	Staton	MTThF	Gunter 201
246-3		Advanced Techniques in Teaching Individual Sports	4		MTWThF	Men's Gym
260-3		Scientific Principles of Coaching	4	Barham	MTThF	Gunter Hallway
280-3		Care of Sports Injuries	3	Rossi	MWF	Gunter 205
344-3		Supervision of Physical Education and Recreation	4	Cyphers	MTThF	Frasier 205
406-3		Administrative Interrelationships in Health, Physical Education and Recreation	4	Pearson	MTThF	Gunter 203
<b>10:10-11:00 a.m. — HPER</b>						
12-4		Tennis (Men and Women)	1		MWF	Courts
20-4		Beginning Bowling (fee req.)	1	Benich	TTh	College Alleys Center
25-4		Beginning Swimming (Men and Women)	1	Best	MW	Pool
26-4		Intermediate Swimming (Men and Women)	1	Best	TTh	Pool
62-4		First Aid	2	Wright	TTh	Gunter 205
88-4		Physical Education Activities for the Elementary School	2		MTWThF	Gunter 107
101-4		Health Education in the Elementary School	2	Rossi	TTh	Gunter 201
201-4		Problems in School Health Programs	4	Latham	MTThF	Frasier 205
226-4		Tests and Measurements in Physical Education	3	Lindahl	MWF	Gunter 201
232-4		Adapted Physical Education	3	Van Anne	MWF	Gunter 205
270-4		Administration of Athletics	3	Hancock	MWF	Gunter Hallway
305-4		Public Health Education	4	Staton	MTThF	Gunter 203
<b>11:10-12 noon — HPER</b>						
12-5		Tennis (Men & Women)	1	Heiss	MWF	Courts
25-5		Beginning Swimming (Men & Women)	1	Best	MW	Pool
62-5		First Aid	2	Best	TTh	Gunter 201
63-5		Advanced First Aid (June 13-July 15)	1	Rossi	TTh	Gunter 205
64-5		Instructors Course in First Aid (July 18-August 19)	1	Rossi	TTh	Gunter 205
226-5		Tests and Measurements in Physical Education	3	Lindahl	MWF	Gunter 205
235-5		Educational Interpretations of Health, Physical Education and Recreation	3	Sage	MWF	Gunter 201
251-5		Administration of Community Recreation	4	Shirley	MTThF	Gunter Hallway
312-5		Evaluation in Health, Physical Education and Recreation	4	Everett	MTThF	Gunter 203
340-5		Curriculum in Health and Physical Education	4	Pearson	MTThF	Frasier 205
<b>12:10-1:00 p.m. — HPER</b>						
61-6		Personal and Community Health	3	Latham	MWF	Frasier 205
65-6		Senior Life Saving (June 13-July 15)	1	Best	MTWThF	Pool
66-6		Water Safety Instructor's Course (July 18-August 19)	1	Best	MTWThF	Pool
88-6		Physical Education Activities for the Elementary School	2	Notto	MTWThF	Gunter 107
200-6		Workshop: Physical Education for the Mentally Retarded (July 18-29; 12:00-3:00)	3	Cyphers-Staff	MTWThF	Bishop-L 131
245-6		Advanced Techniques in Teaching Gymnastic Activities (Men & Women)	4	Rossi	MTWThF	Ballroom
250-6		Administration of Physical Education	3	Barham	MWF	Gunter 201
266-6		Advanced Techniques in Teaching Basketball to Men	2	Sage	TTh	Gunter 201
274-6		Methods and Materials in Driver Education	3	Wright	MWF	Gunter 205
340-6		Curriculum in Health and Physical Education	4	Pearson	MTThF	Gunter 203
<b>1:10-2:00 p.m. — HPER</b>						
3-7		Badminton (Men & Women)	1		TTh	Men's Gym
20-7		Beginning Bowling (fee req.)	1	Behling	TTh	College Alleys Center
61-7		Personal and Community Health	3	Latham	MWF	Gunter 203
94-7		Problems in Dance Composition (Workshop) (June 20-July 1; 1:10-5:00)	2	Notto	MTWThF	Ballroom Mezz.
220-7		Scientific Bases of Health and Physical Education	5	Barham	MTWThF	Kepner 216



Bruce



Gunning



Lindauer



Mueller



Neal



Schweers



Shoemaker



Trigg

### HEALTH AND PHYSICAL EDUCATION



Butler Chairman



Barham



Benich



Best



Cyphers



Everett



Fri



Hancock



# HPER -- Humanities

## 1966 Summer Class Schedule

Course	Section No.	Division, Time and Course Title	Hours		Instructor	Days	Building and Room	
			Credit					
	247-7	Advanced Techniques in Teaching Team Sports (Baseball) (Workshop) (June 27-July 1; 1:10-5:00)	2		Wright	MTWThF	Gunter	205
	248-7	Advanced Techniques in Teaching Dance Activities (Workshop) (July 18-July 29; 1:10-5:00)	4		Steffy	MTWThF	Ballroom	Mezz.
	258-7	Dance Methods and Materials (Workshop) (August 1-August 12; 1:10-5:00)	4		Notto	MTWThF	Ballroom	Mezz.
	265-7	Advanced Techniques in Teaching Football to Men (Workshop) (June 20-June 24; 1:10-5:00)	2		Heiss	MTWThF	Gunter	205
	401-7	Analysis of Research and Literature in Health and Physical Education	4		Staton	MTThF	Frasier	205
	403-7	Research Seminar in Health and Physical Education	4		Everett	MTThF	Gunter	Hallway
<b>2:10-3:00 p.m. — HPER</b>								
	20-8	Beginning Bowling (fee req.)	1		Behling	TTh	College Alleys	Center
	25-8	Beginning Swimming (Men & Women)	1			TTh	Pool	
	200-8	Workshop in Physical Education (Physical Fitness) (July 11-July 15; 2:10-4:00)	2		Van Anne	MTWThF	Gunter	201
	402-8	Changing Perspectives in Physical Education	4		Sage	MTThF	Gunter	203
<b>3:10-4:00 p.m. — HPER</b>								
		Recreational Swimming	0		Guards		Pool	
		Faculty Swimming	0		Guards		Pool	
<b>4:10-5:00 p.m. — HPER</b>								
		Team Sports (Intramural Program)	0		Benich			
<b>7:00-10:00 p.m. — HPER</b>								
		Family Fun Night	0		Shirley	W		

## Division of Humanities

### 7:10-8:00 a.m. — Humanities

COM	1-1	Elementary Composition I	3	Noland	MWF	Kepner	110
COM	1-21	Elementary Composition I	3	Walker, F.	MWF	Kepner	103
COM	2-1	Elementary Composition II (Class meets T 7:10-9:00, Th 7:10-8:00)	3	Sullivan	TTh	Kepner	103
COM	3-1	Principles of Speech (Class meets T 7:10-9:00, Th 7:10-8:00)	3	Longwell	TTh	Kepner	210
EED	226-1	Literature and Materials in the Secondary School	4	Carriar	MTWTh	Bishop-L	206
ENG	259-1	Readings in English Literature from 1800 to the Present	4	Huff	MTThF	Kepner	118
FL	210-1	Linguistics	3	Graham	MWF	Kepner	6
SP	290-1	Persuasion	3	Toussaint	MWF	Kepner	209

### 8:10-9:00 a.m. — Humanities

	1-2	Introduction. The Greek and Roman Periods	3		MWF	Kepner	108
	220-2	Greek Culture (Five weeks' study of Greek history, literature, art, architecture, and mythology on the campus. Classes meet from 8:10 to 11:00 daily and from 1:10 to 2:00 MTWTh. This will be followed by a month in Greece. Students who wish to study Greek culture without the European trip may enroll in ENG 325, and ENG 230, as listed elsewhere, sitting in with the HUM 220 group during the first five weeks of the quarter. (See page 4 for details.)	15	Cross	MTWThF	Bishop-L	104
COM	1-2	Elementary Composition I	3	Holes	MWF	Kepner	110
COM	3-2	Principles of Speech	3	Crawford, R.	MWF	Kepner	210
ENG	235-2	Contemporary American Drama	3	Jones, K.	MWF	Kepner	120
ENG	306-2	Seminar in Major American Writers II	4	Gates, G.	MTThF	Kepner	118
ENG	325-2	Seminar in World Literature (Class meets 8:10-10:00, June 13-July 15)	4	Cross	MTWThF	Bishop-L	104
FR	250-2	French Writers from 1900 to 1914	3	Graham	MWF	Kepner	6
SP	294-2	Critical Thinking	4	Toussaint	MTThF	Kepner	209
SP	350-2	Rhetorical Theory	4	Holley	MTThF	Kepner	205

### 9:10-10:00 a.m. — Humanities

	3-3	The Eighteenth to the Twentieth Centuries	3	Mott	MWF	Kepner	108
EED	228-3	The Teaching of Reading in the Secondary School	4	Carriar	MTWTh	Bishop-L	206
EED	301-3	The Teaching of Grammar (New and Traditional)	4	Gates, G.	MTThF	Kepner	103
ENG	211-3	The English Language	4	Freeman	MTThF	Kepner	118
SP	16-3	Voice and Diction	4	DeBoer	MTThF	Kepner	209
SP	217-3	Advanced Oral Interpretation	3	Norton	MWF	Kepner	204
SP	220-3	Stage Costuming	4		MTWTh	Frasier	69
SP	275-3	Phonetics	3	Ahlberg	MWF	Kepner	120



Heiss



Latham



Lindahl



Notto



Pearson



Rossi



Sage



Shirley



Staton



Steffy



Van Anne



Wright

### HUMANITIES



Frease  
Dean



Ahlberg

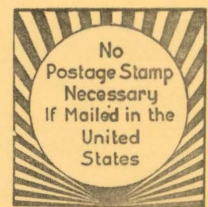
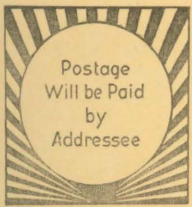


Carriar



Cleere





**BUSINESS REPLY MAIL**  
First Class Permit No. 182—Greeley, Colorado

**REGISTRAR**  
**COLORADO STATE COLLEGE**  
**GREELEY, COLORADO 80631**





### BUSINESS REPLY CARD

My student number\* at CSC is \_\_\_\_\_

You must return this card if you intend to enroll for classes at Colorado State College for the current Summer Quarter.

Name Miss  \_\_\_\_\_  
 Mrs.  \_\_\_\_\_  
 Mr.  \_\_\_\_\_

Address \_\_\_\_\_  
 Street City State

\*If you have attended CSC since August 31, 1959, you have been assigned a student number. If you do not have a student number you must complete the statistical information form on page 31 and mail it to the registrar immediately. (If you have been assigned a student number but do not remember it, leave the space blank!)

Fill in Each Blank Below Which Applies to You:

1. I am a **GRADUATE** student: new \_\_\_\_\_ returning \_\_\_\_\_
  - a. I have been admitted, my application has been evaluated, and I am classified as a degree candidate for the \_\_\_\_\_ degree.
  - b. I am unclassified and do not wish to enroll as a degree candidate \_\_\_\_\_.
  - c. I wish to apply for admission and evaluation as a degree candidate \_\_\_\_\_, What degree? \_\_\_\_\_.
2. I am an **UNDERGRADUATE** student: new \_\_\_\_\_ returning \_\_\_\_\_
  - a. I have been admitted, evaluated, and classified as an A.B. degree candidate \_\_\_\_\_.
  - b. I am unclassified and do not wish to enroll as a degree candidate \_\_\_\_\_.
  - c. I wish to apply for admission and evaluation as a degree candidate \_\_\_\_\_.
1. I will be a beginning freshman \_\_\_\_\_
2. I will be an **UNDERGRADUATE** transfer student \_\_\_\_\_
- d. As a former student with a minimum of 135 quarter hours I wish to apply for graduation \_\_\_\_\_ (I have not applied previously.)
- e. I have applied for graduation and my proposed graduation is \_\_\_\_\_ Quarter, 19\_\_\_\_.
3. Please mail the following items to me:
  - a. A Summer Quarter Bulletin \_\_\_\_\_
  - b. A Current General Catalog \_\_\_\_\_ (For new students only!)
  - c. A Graduate Bulletin \_\_\_\_\_
  - d. An Additional Statistical Information Form \_\_\_\_\_
4. If you need specific information about a certain course listed in the Summer Bulletin, you must write to the particular division concerned.

Please Read Carefully and Fill Out Card Completely!



# Humanities--Music

## 1966 Summer Class Schedule



Crawford



Cross



DeBoer



Freeman



Gates



Graham



Harrison



Holley



Huff



Jamison



Jones



Longwell



Norton



Princic



Starr



Toussaint

Course	Section No.	Division, Time and Course Title	Hours Credit	Instructor	Days	Building and Room
--------	-------------	---------------------------------	--------------	------------	------	-------------------

### 10:10-11:00 a.m. — Humanities

COM	2-4	Elementary Composition II (Class meets T 10:10-11:00, Th 10:10-12:00)	3	Anderson, D.	TTh	Kepner 205
COM	3-4	Principles of Speech	3	Crawford, R.	MWF	Kepner 210
EED	350-4	Seminar in Literature for Adolescents	4	Carriar	MTWTh	Bishop-L 206
ENG	53-4	Victorian Prose and Poetry	3	Huff	MWF	Kepner 118
ENG	261-4	Readings in American Literature Since 1865	4	Frease, F.	MTWThF	Carter 305
ENG	313-4	Chaucer and Middle English	5	Freeman	MTWThF	Kepner 103
FR	251-4	French Writers from 1919 to 1930	3	Graham	MWF	Kepner 6
SP	113-4	Stagecraft (Summer Theatre Members and permission of instructor)	3	Norton	MWF	Frasier 171
SP	213-4	Advanced Staging Techniques (Summer Theatre members and permission of instructor)	4	Wolfe, W.	MTWTh	Frasier 135
SP	280-4	American Public Address	4	Toussaint	MTWTh	Kepner 209

### 11:10-12 noon — Humanities

COM	3-5	Principles of Speech	3	Longwell	MWF	Kepner 209
EED	302-5	The Teaching of Composition	4	Starr	MTWTh	Kepner 118
ENG	110-5	Creative Writing II	2	Huff	TTh	Kepner 103
ENG	210-5	Advanced Expository Writing	3	Huff	MWF	Kepner 103
ENG	260-5	Readings in American Literature to 1865	4	Gates, G.	MTThF	Kepner 101
FR	252-5	French Writers from 1930 to 1955	3	Graham	MWF	Kepner 6
SP	116-5	Beginning Play Direction (Summer Theatre members and permission of instructor)	4	Willcoxon	MTWTh	Frasier 71
SP	360-5	General Semantics	4	DeBoer	MTThF	Kepner 210

### 12:10-1:00 p.m. — Humanities

COM	2-6	The Middle Ages and the Renaissance	3	Princic	MWF	Kepner 108
COM	1-6	Elementary Composition I	3	Bellman	MWF	Kepner 110
EED	326-6	Reconstructing the English Curriculum	4	Starr	MTWTh	Kepner 118
ENG	323-6	Modern English Philology and Usage	4	Freeman	MTThF	Kepner 103
SP	270-6	The Psychology of Speech	4	Crawford, R.	MTThF	Kepner 210

### 1:10-2:00 p.m. — Humanities

ENG	230-7	Greek and Comparative Mythology	4	Harrison	MTWTh	Kepner 101
ENG	325-7	Seminar in World Literature	4	Princic	MTWTh	Kepner 110
SP	108-7	Parliamentary Procedure	2	DeBoer	TTh	Kepner 209
SP	228-7	Television in Education (Lab. 1:10-3:00 TTh)	4	Jamison	MW	Bishop-L 228
SP	248-7	Workshop in Speech Education: Curriculum (June 27-July 8) (Class meets 1:30-4:30)	3	DeBoer-Longwell	MTWThF	Kepner 210
SP	316-7	Seminar in Theater Production	4	Jones, K.	MTWTh	Kepner 120

### 2:10-3:00 p.m. — Humanities

ENG	258-8	Readings in English Literature from 700-1800	4	Starr	MTWTh	Kepner 110
ENG	311-8	The English Romantic Movement (Class meets 2:10-4:00)	4	Harrison	MW	Kepner 101
ENG	321-8	The Twentieth Century British Novel (Class meets 2:10-4:00)	4	Harrison	TTh	Kepner 101
SP	211-8	Summer Theatre Workshop II	5	Willcoxon-Wolfe, W.	MTWThF	Frasier 135

### 3:10-4:00 p.m. — Humanities

SP	200-9	Techniques of Play Direction	3	Willcoxon	MWF	Frasier 71
SP	208-9	Introduction to Radio and Television Production (Lab. 3:10-5:00 TTh)	4	Jamison	MW	Bishop-L 228

### 4:10-5:00 p.m. — Humanities

SP	333-10	Advanced Children's Theater Production	4	Jones, K.	MTWTh	Kepner 214
----	--------	--	---	-----------	-------	------------

## Division of Music

### Hours Arranged—Music

205-71	Music Performance Individual Instruction—Voice	1	Worden	Arr.	Frasier 252
205-73	Music Performance Individual Instruction—Voice	1	Ludwig	Arr.	Frasier 153
205-74	Music Performance Individual Instruction—Voice	1	Schmitz	Arr.	Frasier 150
205-75	Music Performance Individual Instruction—Voice	1	Skinner	Arr.	Frasier 254
205-76	Music Performance Individual Instruction—Piano	1	Konig	Arr.	Frasier 154
205-77	Music Performance Individual Instruction—Piano	1	Dykens	Arr.	Frasier 156
205-78	Music Performance Individual Instruction—Piano	1	Fluke	Arr.	Frasier 166
205-79	Music Performance Individual Instruction—Piano	1	Hutcherson	Arr.	Frasier 155
205-80	Music Performance Individual Instruction—Piano	1	Menk	Arr.	Frasier 151
205-81	Music Performance Individual Instruction—Piano	1	Schenkman	Arr.	Frasier 152
205-82	Music Performance Individual Instruction—Piano	1	Smith	Arr.	Frasier 49
205-83	Music Performance Individual Instruction—Organ	1	Smith	Arr.	Frasier 55B
205-84	Music Performance Individual Instruction—Strings	1	Garlick	Arr.	Frasier 52
205-85	Music Performance Individual Instruction—Strings	1	Ginsburg	Arr.	Frasier 252
205-86	Music Performance Individual Instruction—Strings	1	Mickens	Arr.	Frasier 251
205-87	Music Performance Individual Instruction—Woodwinds	1	Bartlett	Arr.	Frasier 170
205-88	Music Performance Individual Instruction—Woodwinds	1	Evans	Arr.	Frasier 53
205-89	Music Performance Individual Instruction—Woodwinds	1	James, R.	Arr.	Frasier 48



# Music

## 1966 Summer Class Schedule



Willcoxon



Wolfe

### MUSIC



Miller  
Chairman



Baker



Bartlett



Dykins



Evans



Fluke



Garlick



Ginsburg



Goes



Hutcherson



James



King



Ludwig



Menk

Course	Section No.	Division, Time and Course Title	Hours Credit	Instructor	Days	Building and Room
205-90		Music Performance Individual Instruction—Brass	1		Arr.	Frasier 167
205-91		Music Performance Individual Instruction—Brass	1	Baker	Arr.	Frasier Arr.
205-92		Music Performance Individual Instruction—Brass	1	Miller	Arr.	Frasier 159
205-93		Music Performance Individual Instruction—Percussion	1	Goes	Arr.	Frasier 166
<b>7:10-8:00 a.m. — Music</b>						
194- 1		Percussion Class	1	Goes	TTh	Frasier 63
217- 1		Methods and Materials for Class Instrument Instruction	3	James, R.	MWF	Frasier 58
270- 1		18th Century Harmony and Forms (Class meets 7:10-8:30)	3	Menk	TTh	Frasier 149
360- 1		Historical Analysis of Music Structure	5	Garlick	MTWThF	Frasier 54
380- 1		Survey of Music History	3	Smith, R.	MWF	Frasier 168
<b>8:10-9:00 a.m. — Music</b>						
190- 2		Clarinet Class	1	Bartlett	TTh	Frasier 54
205- 2		Music Performance (Brass Ensemble)	1	Baker	TTh	Frasier 63
206- 2		Music and Recreation	2	Nofziger	TTh	Frasier 168
215- 2		Instrumental Literature	3	King	MWF	Frasier 58
251- 2		Teaching Secondary School Music	3	Nofziger	MWF	Frasier 168
277- 2		Church Music	3	Smith, R.	MWF	Frasier 148
350- 2		Practical Arranging	3	Baker	MWF	Frasier 169
383- 2		Seminar: The Romantic Period	3	Schenkman	MWF	Frasier 149
384- 2		Seminar: Beethoven	2	Schenkman	TTh	Frasier 249
385- 2		Seminar: New Music	2	Dykins	TTh	Frasier 169
420- 2		Criteria for Music Analysis and Composition (Class meets 8:10-10:00)	4	Hutcherson	TTh	Frasier 148
<b>9:10-10:00 a.m. — Music</b>						
196- 3		Voice Class	1	Schmitz	TTh	Frasier 168
249- 3		Music Methods and Materials for Elementary Teachers	2	Ludwig	MWF	Frasier 168
276- 3		American Music	3	Smith	MWF	Frasier 54
295- 3		Art of Music Listening	3	Menk	MWF	Frasier 149
305- 3		Supervising Elementary Teachers of Music	3	Nofziger	MWF	Frasier 148
319- 3		Instrumental Techniques and Materials (Woodwinds)	5	Evans-Bartlett	MTWThF	Frasier 58
320- 3		Instrumental Techniques and Materials (Brass)	5	Miller-Baker-Goes	MTWThF	Frasier 63
401- 3		Research Seminar in Music Education	5	Mohr	MTWThF	Frasier 256
<b>10:10-11:00 a.m. — Music</b>						
205- 4		Music Performance (Stage Band)	1	Baker	TTh	Frasier 63
243- 4		Vocal Repertoire: French and English: 19th and 20th Centuries	2	Worden	TTh	Frasier 168
249- 4		Music Methods and Materials for Elementary Teachers	2	Fluke	MWF	Frasier 168
262- 4		Symphonic Literature (Class meets 10:10-11:30)	3	Dykins	TTh	Frasier 169
265- 4		History of Opera	3	Skinner	MWF	Frasier 256
270- 4		Eighteenth Century Harmony and Forms	3	Hutcherson	MWF	Frasier 149
272- 4		Twentieth Century Harmony and Forms	3	Dykins	MWF	Frasier 169
310- 4		Problems of Instrumental Supervision (Class meets 10:10-12:00)	4	King	TTh	Frasier 58
402- 4		Foundations of Music Education	3	Mohr	MWF	Frasier 148
<b>11:10-12 noon — Music</b>						
10- 5		Beginning Class Piano I	1	Fluke	TTh	Frasier 51
205- 5		Music Performance (Woodwind Ensemble)	1	Bartlett	TTh	Frasier 63
219- 5		Improvisation	2	Menk	TTh	Frasier 149
225- 5		Practicum in Orchestra Conducting and Performance	3	Evans	MWF	Frasier 63
242- 5		Vocal Repertoire: German Lieder	2	Worden	TTh	Frasier 168
253- 5		Music for the Exceptional Child	3	Fluke	MWF	Frasier 168
311- 5		Improvement of Instruction in Instrumental Music	3	King	MWF	Frasier 58
323- 5		Comparative Voice Methods and Materials	3	Worden	MWF	Frasier 169
<b>12:10-1:00 p.m. — Music</b>						
205- 6		Music Performance (Mixed Choir)	1	Skinner	MWF	Frasier 256
205-26		Music Performance (Symphony Orchestra)	1	Evans-Mickens-Ginsburg	MWF	Frasier 63
205-36		Music Performance (Chamber Orchestra)	1	Evans	TTh	Frasier 63
<b>1:10-2:00 p.m. — Music</b>						
10- 7		Beginning Class Piano I	1	Menk	TTh	Frasier 51
52- 7		Harmony I	3	Goes	MWF	Frasier 54
193- 7		String Class	1	Mickens	TTh	Frasier 249
193-27		String Class	1	Garlick	TTh	Frasier 58
205- 7		Music Performance (Concert Band)	1	James, R.	TTh	Frasier 63
212- 7		Music Activities for Classroom Teachers	3	Fluke	MWF	Frasier 168
216- 7		Methods and Materials for Class Voice Instruction	3	Ludwig	MWF	Frasier 169
223- 7		Practicum in Band Conducting and Performance	3		MWF	Frasier 63
256- 7		Psychology of Music	3	King	MWF	Frasier 149



# Music-- Nursing-- Science

## 1966 Summer Class Schedule

Course	Section No.	Division, Time and Course Title	Hours Credit	Instructor	Days	Building and Room
<b>2:10-3:00 p.m. — Music</b>						
49-8		Music Fundamentals I	2	Ginsburg	MWF	Frasier 169
202-8		Opera Workshop (Class meets 2:10-4:00)	3	Schmitz-Skinner	WF	Frasier 256
205-8		Music Performance (Symphonic Winds) (Class meets 2:10-4:00)	1		MTTh	Frasier 63
218-8		Principles of Piano Teaching (June 20- July 1; Class meets 2:10-5:00)	3	Hutcherson-Duckworth	MTWThF	Frasier 148
250-8		Seminar in Music Education (July 11-July 22; Class meets 2:10-5:00)	3	Nofziger-Freeburg	MTWThF	Frasier 148
317-8		Instrumental Techniques and Materials (Violin-Viola; Class 2:10-3:30)	3	Mickens	WF	Frasier 58
318-8		Instrumental Techniques and Materials (Cello and Bass; Class meets 2:10-3:30)	3	Garlick	WF	Frasier 54

### Division of Nursing

<b>8:10-10:30 a.m. — Nursing</b>						
103-2		Medical-Surgical Nursing (Class meets MF 8:10-10:30) (lab. 15 hrs. TWTh 8:10-1:30 —Weld County General Hospital)	10	Carlson	MTWThF	Cranford 200A
<b>9:10-12 noon — Nursing</b>						
202-3		Nursing of Children (Class meets M 9:10-12:00, F 9:10-11:00) (lab. 15 hrs. T 7:00-1:30, W 7:00-11:30, Th 3:00-8:00—Weld County General Hospital)	10	Payton	MTWThF	Cranford 200B
<b>1:10-2:00 p.m. — Nursing</b>						
101-7		Pharmacology	3	Hallan	MWTh	Cranford 200B
<b>2:10-4:00 p.m. — Nursing</b>						
100-8		Basic Principles of Nursing (Class meets MTTh 2:10-4:00) (lab. 12 hrs. TWThF 8:00-11:00 —Weld County General Hospital)	10	McMinn-Hallan-Sawatzky-Self	MTWThF	Cranford 200B
<b>3:10-4:00 p.m. — Nursing</b>						
101-9		Pharmacology	3	Hallan	MTW	Kepner 204

### Division of the Sciences

<b>7:10-8:00 a.m. — Science</b>						
APST	275-1	Descriptive Statistics (Lab. 2 hrs. arr.)	5		MTWTh	Ross 301
BIO	296-1	Ecological Principles (Labs. 6 hrs. TTh, 7:00-9:00, 10:00-11:00)	5	Thomas-Hess	MF	Ross L107
CHEM	46-1	Qualitative Analysis (Lab. 6 hrs. TW 2:00-5:00)	5	Koch	MWF	Ross 111
CHEM	245-1	Quantitative Analysis (Lab. 6 hrs. TTh 2:00-5:00)	5	Woerner	MWF	Ross 35
ESCI	231-1	Introduction to Oceanography	3	Tollefson	MWF	Ross 329
ESCI	235-1	Rocky Mountain Geology (Class meets 7:10-8:30)	3	Tollefson	TTh	Ross 329
ESCI	237-1	Principles of Geology (Lab. 3 hrs. T 10:00-1:00, Th 7:00-10:00)	5	Shropshire	MTWF	Ross 331
MATH	122-1	Introduction to Modern Algebra	5	Tolar	MTWThF	Ross 305
MATH	234-1	Advanced Calculus III	5		MTWThF	Ross 302
MATH	324-1	Modern Algebra II	5	Johnson, R.	MTWThF	Ross 304
ZOO	114-1	Ornithology (Field trips req.)	3	Stamper	MWF	Ross 224
ZOO	212-1	Mammalian Anatomy (Lab. 4 hrs. TTh 10:00-12:00)	5		MWF	Ross L106
<b>8:10-9:00 a.m. — Science</b>						
	5-2	Earth Science	3	Crockett	MWF	Ross L105
	205-2	Physical Science Concepts	4		MTWF	Ross 331
APST	275-2	Descriptive Statistics (Lab. 2 hrs. arr.)	5		MTWTh	Ross 301
BIO	297-2	Basic Genetics (Labs. 4 hrs., T, 1:00-4:00)	4	Winchester	MF	Ross L107
BOT	222-2	Plant Physiology I (Lab. 4 hrs. TTh 8:00-10:00)	5	Moinat	MWF	Ross 245
CHEM	291-2	Structure of Matter (June 25-August 19) (Reg. Seminar Attendance)	5		MTWThF	Ross L104
CHEM	349-2	Advanced Inorganic Chemistry	3	Fields	MWF	Ross 34
MATH	31-2	Calculus with Analytic Geometry I (2 hrs. required, 8 and 11 o'clock, June 15-July 15)	5		MTWThF	Ross 302
MATH	32-2	Calculus with Analytic Geometry II (2 hrs. required, 8 and 11 o'clock, July 18-August 19)	5		MTWThF	Ross 302



Mickens



Mohr



Nofziger



Schenckman



Schmitz



Skinner



Smith

#### NURSING



McMinn  
Chairman



Carlson



Hallan



Payton



Rubenstein, V.



Sawatzky



Self



# Science

## 1966 Summer Class Schedule

Course	Section No.	Division, Time and Course Title	Hours Credit	Instructor	Days	Building and Room
MATH	201-2	Theory of Sets (Class meets 8:10-9:30)	3	Tolar	TTh	Ross 305
MATH	203-2	Structure of Numbers	3	Johnson, R.	MWF	Ross 305
MATH	326-2	Theory of Groups	4		MTWF	Ross 303
MED	372-2	Curriculum in Secondary School Mathematics	5	Popejoy	MTWThF	Ross 304
PHYS	161-2	Mechanics I	4		MTWF	Ross 35
SCED	273-2	Problems in Teaching Physics (Class meets 8:10-10:00)	4	Trowbridge	TTh	Ross 358
SCED	372-2	Improvement of Science Instruction in the Secondary School Through Curriculum Development	3	Olson, K.	MWF	Ross 357
ZOO	12-2	General Zoology—Vertebrate (Lab. 4 hrs. TTh 1:00-3:00)	5		MWF	Ross L106
ZOO	217-2	Human Physiology (Labs. 4 hrs., TTh 8:00-10:00)	5	Rich	MWF	Ross 224

### 9:10-10:00 a.m. — Science

	3-3	Physical Science	3		MWF	Ross L107
	5-3	Earth Science (Juniors and Seniors are urged to take a substitute for this course.)	3	Sargent	MWF	Ross L105
APST	376-3	Statistical Inference	5		MTWThF	Ross 301
BIO	151-3	Cellular Biology (Lab. 4 hrs. MW 1:00-3:00)	5	Rich	MWF	Ross L106
BOT	122-3	General Bacteriology (Lab. 4 hrs. TTh 10:00-12:00)	5	Lindsey	MWF	Ross 215
CHEM	40-3	Principles of Chemistry I (Lab. 6 hrs. MW 2:00-5:00; two hrs. req. 9:00 and 1:00, June 15-July 15)	5	Fields	MTWF	Ross 111
CHEM	41-3	Principles of Chemistry II (Lab. 6 hrs. MW 2:00-5:00, two hrs. req. 9:00 and 1:00, July 18-August 19)	5	Fields	MTWF	Ross 111
CHEM	281-3	Physical Chemistry I (Lab. 3 hrs. Th 1:00-4:00)	5	Koch	MTWF	Ross 125
CHEM	292-3	Introductory Organic Chemistry (June 25-August 19) (Labs. 3 hrs. Th 9:00-12:00)	4		MTWF	Ross L104
ESCI	136-3	General Geology (Field Trips Req.)	4	Tollefson	MTWF	Ross 331
ESCI	238-3	Elementary Physical Meteorology	3	Trowbridge	MWF	Ross 329
MATH	1-3	Basic Mathematics (Class meets 9:30-11:00)	3	Anders	TTh	Ross 305
MATH	25-3	Plane Trigonometry	5		MTWThF	Ross 302
MATH	202-3	Basic Mathematical Logic	3	Cavanagh	MWF	Ross 305
MATH	232-3	Advanced Calculus I	5		MTWThF	Ross 303
MATH	243-3	Modern Geometry I	5	Fisch	MTWThF	Ross 304
PHYS	61-3	General Physics—Mechanics (Lab. 2 hrs. T 1:00-3:00)	5	Fry, R.	MTWF	Ross 34
PHYS	164-3	Electrical Measurements (Lab. 3 hrs. T 2:00-5:00)	5		MTWF	Ross 35
SCED	277-3	Test Construction in Science	3	Glidden	MWF	Ross 224
SCED	374-3	Instructional Problems in Teaching Science	3	Crockett	MWF	Ross 358
SCED	376-3	History of Science	3	Sund	MWF	Ross 357
ZOO	319-3	Animal Parasitology (Lab. 4 hrs. TTh 1:00-3:00)	5	Schmidt	MWF	Ross 225

### 10:10-11:00 a.m. — Science

APST	275-4	Descriptive Statistics (Lab. 2 hrs. arr.)	5		MTWTh	Ross 301
BIO	298-4	Plant Growth, Development and Regulation (Labs. 4 hrs., M 1:00-5:00)	4	Mellor	MF	Ross L107
BOT	22-4	General Botany I (Lab. 4 hrs. TTh 10:00-12:00)	5	Leafgren	MWF	Ross 224
CHEM	242-4	Organic Chemistry (Lab. 3 hrs. T 2:00-5:00)	5	Tomasi	MTWF	Ross 111
CHEM	282-4	Physical Chemistry II (Lab. 3 hrs. Th 1:00-4:00)	5	Koch	MTWF	Ross 125
ESCI	233-4	Field Methods (Lab. 6 hrs. MW 2:00-5:00)	3	Shropshire	W	Ross 329
MATH	142-4	College Geometry	5	Johnson, R.	MTWThF	Ross 304
MATH	223-4	Modern Algebra I	5	Cavanagh	MTWThF	Ross 303
MATH	250-4	Probability Theory	3		MWF	Ross 305
MED	373-4	Problems in the Teaching of Secondary Mathematics	4	Popejoy	MTWTh	Ross 302
PHYS	267-4	Atomic Physics (Lab. 3 hrs. Th 1:00-4:00)	5	Hayes	MTWF	Ross 35
SCED	270-4	Teaching Science in the Elementary School (Lab. 2 hrs. T 1:00-3:00, 3:00-5:00; Th 1:00-3:00, 3:00-5:00)	3	Sund	MW	Ross L104
SCED	270-24	Teaching Science in the Elementary School (Lab. 2 hrs. T 1:00-3:00, 3:00-5:00; Th 1:00-3:00, 3:00-5:00)	3	Olson, K.	MW	Ross L104
SCED	274-4	Problems in Teaching Biology (Class meets 10:10-12:00)	4	Sund	TTh	Ross 357
ZOO	315-4	Vertebrate Organogeny (Lab. 4 hrs. MW 10:00-12:00)	4	Stamper	TTh	Ross L106

### 11:10-12 noon — Science

	3-5	Physical Science	3		MWF	Ross L107
	4-5	Biological Science (Juniors and Seniors are urged to take a substitute for this course.)	3	Rich	MWF	Ross L106
	209-5	Aviation and Space Flight	4	Olson, K.	MTWF	Ross 329
APST	275-5	Descriptive Statistics (Lab. 2 hrs. arr.)	5		MTWTh	Ross 301
BIO	253-5	Human Genetics and Eugenics	3	Winchester	MWF	Ross 224
BOT	229-5	Plant Diseases (Lab. 4 hrs. TTh 1:00-3:00)	5	Lindsey	MWF	Ross 209
CHEM	147-5	General Biochemistry (Lab. 3 hrs. Th 1:00-4:00)	5	Tomasi	MTWF	Ross L105
CHEM	284-5	Instrumental Methods of Analysis (Lab. 3 hrs. W 2:00-5:00)	4	Woerner	MWF	Ross 125
CHEM	293-5	Quantitative Analysis (June 25-August 19) (Labs. 3 hrs., Th 9:00-12:00)	4		MTWF	Ross 111

## SCIENCE



Glidden  
Chairman



Anders



Cavanagh



Crockett



Fields



Fisch



Fry



Hayes



Johnson



Koch



Moinat



Olson, K.



Popejoy



Rich



Schmidt



Shropshire



(TEAR OFF)

Please use  
the attached

**REPLY  
CARD**

to order  
additional  
materials and  
to inform the  
college of your  
intention to  
enroll at

**Colorado State College**

for the

**Current Summer Quarter**



# Science--Social Science

## 1966 Summer Class Schedule

Course	Section No.	Division, Time and Course Title	Hours Credit	Instructor	Days	Building and Room
MATH	33- 5	Calculus with Analytic Geometry III	4	Tolar	MTWF	Ross 303
MATH	344- 5	Modern Geometry II	5	Fisch	MTWThF	Ross 304
MED	264- 5	History of Mathematics I	3		MWF	Ross 305
PHYS	63- 5	General Physics—Sound, Light and Heat (Lab. 2 hrs. Th 1:00-3:00)	5		MTWF	Ross 34
PHYS	263- 5	Light and Optics (Lab. 3 hrs. Th 8:00-11:00)	5	Fry, R.	MTWF	Ross 35
SCED	271- 5	Improvement of Science Instruction in the Elementary School Through Curriculum Development	3	Crockett	MWF	Ross 357-358
SCED	375- 5	Development of Scientific Inquiry Abilities of Children Through Science	4	Neal	MTWF	Ross 358
ZOO	311- 5	Advanced Invertebrate Zoology (Lab. 4 hrs. TTh 8:00-10:00)	5	Schmidt	MWF	Ross 204

### 12:10-1:00 p.m. — Science

APST	475- 6	Design and Analysis of Experiments	5		MTWThF	Ross 301
BIO	251- 6	Evolution	5	Stamper	MWF	Ross L106
BIO	350- 6	Seminar in Biological Sciences	1		Th	Ross L106
BOT	220- 6	Economic Botany	2	Moinat	MW	Ross 224
MATH	24- 6	College Algebra	5		MTWThF	Ross 304
MED	374- 6	Seminar in Teaching Secondary Mathematics	4	Cavanagh	MTWTh	Ross 305

### 1:10-2:00 p.m. — Science

	109- 7	Science for Elementary Teachers	3	Tillery	MWF	Ross 358
	206- 7	Conservation of Natural Resources (Field Trips req. 1:00-5:00) (June 20-July 1)	4	Glidden	MTWThF	Ross L107
	207- 7	Aerospace Workshop (July 11-22) (Field Trips req. 1:00-4:00)	3	Olson, K.	MTWThF	Ross L105
	208- 7	Elementary Science Workshop (July 25-August 5) (Class meets 1:00-4:00 p.m.)	3	Crockett-Neal	MTWThF	Ross L105
	230- 7	Common Minerals and Rocks (Field Trips req. 1:00-4:00)	3	Sargent	MTWThF	Ross 331
APST	476- 7	Prediction Analysis in Behavioral Research	3		MWF	Ross 301
BIO	299- 7	Seminar in Science Inquiry (Class meets 1:00-5:00)	2	Sund	Th	Ross L106
BOT	226- 7	Botanical Microtechnique (Class meets 1:10-3:00)	2	Lindsey	WF	Ross 211
CHEM	285- 7	Chemical Literature	1	Woerner	Th	Ross 111
ESCI	230- 7	Principles of Meteorology (Lab. 2 hrs. Th 10:00-12:00, 1:00-3:00)	4	Trowbridge	MWF	Ross 329
MATH	282- 7	Computer Mathematics I (Lab. 2 hrs. arr.)	4	Anders	MWF	Ross 304
MATH	290- 7	Foundations of Arithmetic	3		MWF	Ross 305
MED	271- 7	Instructional Materials in Secondary School Mathematics (Class meets 1:10-2:30)	3	Popejoy	TTh	Ross 34
MED	277- 7	Mathematics Teachers Workshop I (June 20-July 1) (Class meets 1:00-4:00)	3		MTWThF	Ross 303
MED	279- 7	Mathematics Teachers Workshop III (July 11-22) (Class meets 1:00-4:00)	3		MTWThF	Ross 303
PHYS	165- 7	Modern Physics	4	Hayes	MTWF	Ross 35
SCED	373- 7	Seminar in Science Education	3	Sund	MWF	Ross 357

### 2:10-3:00 p.m. — Science

	330- 8	Graduate Readings Course in Science	4	Glidden-Staff	MWThF	Ross 302
APST	376- 8	Statistical Inference	5		MTWThF	Ross 301
BIO	357- 8	Biological Research (Lab. 6 hrs. arr.)	5	Winchester	MW	Ross 224
BOT	325- 8	Plant Ecology (Lab. 4 hrs. T 1:00-5:00)	5	Moinat	MWF	Ross 215
MATH	251- 8	Mathematical Statistics I	5		MTWThF	Ross 304
MATH	281- 8	Introduction to Computer Mathematics (Lab. 2 hrs. arr.)	5	Anders	MTWF	Ross 305
PHYS	262- 8	Electricity and Magnetism II	4	Fry, R.	MTWF	Ross 35

### 3:10-4:00 p.m. — Science

CHEM	346- 9	Seminar in Chemistry	1	Koch	M	Ross 111
------	--------	----------------------	---	------	---	----------

## Division of the Social Sciences

### Hours Arranged — Social Science

USH	272-70	Contemporary American Foreign Policy (Total cost of this field study course which involves travel to Washington and New York is about \$235 plus tuition. See Page 4 for details.) (June 4-14)	3	Reynolds	Arr.	Faculty Lounge 903-19th St.
-----	--------	--	---	----------	------	-----------------------------

### 7:10-8:00 a.m. — Social Science

GEOG	10- 1	World Geography	5	Farren	MTWThF	Kepner 222
GEOG	360- 1	Political Geography	5	West	MTWThF	Kepner 219
PSCI	40- 1	National Government of the United States	5	Menard	MTWThF	Kepner 122
SOC	206- 1	Crime and Delinquency	3	Willoughby	MWF	Kepner 217
USH	265- 1	Contemporary United States History	3	Reynolds	MWF	Kepner 9
WHS	30- 1	World History I	4	Byerly	MTThF	Kepner 125
WHS	365- 1	French Revolution and Napoleon	5	Barsky	MTWThF	Kepner 205



Stamper



Sund



Thomas



Tolar



Tollefson



Tomasi



Trowbridge



Winchester



Woerner

### SOCIAL SCIENCE



Reynolds  
Chairman



Arnold



Boeck



Byerly



Christensen



Denney



# Social Science

## 1966 Summer Class Schedule



Farren



Larson



Matoren



Mickey, B.



Mickey, J.



Perchlik



Pogue



Quammen



Rubenstein, F.



Trainer



West



Willoughby

Course	Section No.	Division, Time and Course Title	Hours Credit	Instructor	Days	Building and Room
--------	-------------	---------------------------------	--------------	------------	------	-------------------

### 8:10-9:00 a.m. — Social Science

220- 2		European Contributions to American Culture (European study-travel program. Class will meet on campus the first five weeks from 8:10-11:00 daily and then will go to Europe for 29 days. Round trip via Jet from Denver. Terminates August 15. Travel cost \$1150 from Greeley to Greeley. Tuition and living expenses on campus are additional. See Page 4 for details.) (June 13-August 15)	11-15	Arnold-Green	MTWThF	Kepner 125
ANT	20- 2	General Anthropology	5	Mickey, J.	MTWThF	Kepner 214
ECON	102- 2	Contemporary Economic Problems	3	Trainer	MWF	Kepner 11
ECON	250- 2	National Income Analysis (Class meets from 8:10-9:30)	3	Davis	TTh	Kepner 9
GEOG	221- 2	Physical Geography	5	West	MTWThF	Kepner 219
PSCI	275- 2	The United Nations	3	Christensen	MWF	Kepner 218
SOC	50- 2	Principles of Sociology	5	Rubenstein	MTWThF	Kepner 222
USH	364- 2	Civil War and Reconstruction	3	Boeck	MWF	Kepner 122
WHS	200- 2	Introduction to Historical Research	3	Matoren	MWF	Kepner 217
WHS	332- 2	Interrelationship of Western and Eastern Civilizations	3	Barsky	MWF	Gunter Annex 105

### 9:10-10:00 a.m. — Social Science

ANT	224- 3	Indians of the Southwest	3	Mickey, B.	MWF	Kepner 217
ECON	302- 3	Advanced Economics	5	Trainer	MTWThF	Ross 300
GEOG	250- 3	Geography of Colorado	2	Pogue	TTh	Kepner 222
GEOG	365- 3	The Soviet Union	3	Farren	MWF	Kepner 219
PSCI	40- 3	National Government of the United States	5	Perchlik	MTWThF	Kepner 11
SOC	291- 3	Social Psychology	3	Willoughby	MWF	Kepner 214
SOC	292- 3	Problems of Intergroup Relations	2	Willoughby	TTh	Kepner 214
USH	250- 3	History of Colorado	3	Pogue	MWF	Kepner 222
USH	253- 3	Great Men in American History	3	Boeck	MWF	Kepner 122
WHS	372- 3	Constitutional History of Medieval England (Class meets from 9:10-10:30)	3	Byerly	TTh	Kepner 218

### 10:10-11:00 a.m. — Social Science

ANT	225- 4	Cultures of Africa: South of the Sahara	5	Mickey, J.	MTWThF	Kepner 122
ECON	320- 4	History of Economic Thought	3	Trainer	MWF	Kepner 217
GEOG	226- 4	Africa	5	West	MTWThF	Kepner 219
GEOG	237- 4	Middle America	3	Denney	MWF	Kepner 222
SOC	310- 4	Comparative Social Institutions	5	Quammen	MTWThF	Kepner 11
USH	71- 4	United States History II	3	Pogue	MWF	Kepner 9
USH	368- 4	The Populist-Progressive Age, 1887-1920	5	Larson	MTWThF	Kepner 207
WHS	373- 4	Contemporary Germany	4	Matoren	MTWF	Kepner 119

### 11:10-12 noon — Social Science

ANT	20- 5	General Anthropology	5	Mickey, B.	MTWThF	Ross L104
ECON	205- 5	Russia's Soviet Economy	3	Quammen	MWF	Kepner 11
GEOG	218- 5	Australia and the Pacific	2	Holzner	TTh	Kepner 219
GEOG	243- 5	Europe	3	Farren	MWF	Kepner 219
PSCI	171- 5	State and Local Government	5	Christensen	MTWThF	Kepner 217
SOC	211- 5	History of Social Thought	5	Willoughby	MTWThF	Kepner 119
SSED	305- 5	Improvement of Instruction in Social Studies in the Secondary School	3	Perchlik	MWF	Kepner 218
USH	363- 5	Emergence of a New Nation, 1763-1815	5	Boeck	MTWThF	Kepner 122
WHS	260- 5	Ancient History	5	Byerly	MTWThF	Kepner 222

### 12:10-1:00 p.m. — Social Science

GEOG	238- 6	South America	3	Denney	MWF	Kepner 222
PSCI	280- 6	Regional and Supranational Political Organizations	4	Menard	MTWThF	Kepner 125
PSCI	377- 6	Constitutional Law	5	Christensen	MTWThF	Kepner 204
SOC	203- 6	World's Great Religions	3	Mickey, J.	MWF	Kepner 119
SOC	302- 6	American Society Today	3	Rubenstein	MWF	Kepner 217
USH	72- 6	United States History III	3	Pogue	MWF	Kepner 11
WHS	271- 6	English History	5	Barsky	MTWThF	Kepner 122

### 1:10-2:00 p.m. — Social Science

81- 7		The Individual and His Social Relations	3	Mickey, B.	MWF	Kepner 214
250- 7		New Viewpoints in the Social Sciences (Class meets from 1:10-4:00, July 18-July 29)	3	Perchlik	MWF	Kepner 125
330- 7		Graduate Readings Course in the Social Sciences (Class meets from 1:10-3:00)	4	Larson	MT	Gugg. 105
ECON	202- 7	Money and Banking	5	Davis	MTWThF	Kepner 119
GEOG	203- 7	World Resources and Industries	3	Denney	MWF	Kepner 219
PSCI	379- 7	Seminar in International Politics (Class meets from 1:10-4:00)	3	Menard	T	Kepner 217
USH	274- 7	America Comes of Age	3	Larson	MWF	Kepner 222
WHS	399- 7	Historiography (Class meets from 1:10-4:00)	3	Boeck Byerly-Matoren	Th	Kepner 218

### 2:10-3:00 p.m. — Social Science

82- 8		American Life and Institutions	3	Rubenstein	MWF	Kepner 214
ECON	30- 8	Introductory Economics	5	Davis	MTWThF	Kepner 9
GEOG	244- 8	Asia (Class meets from 2:10-4:30)	5	Holzner	MW	Kepner 219
GEOG	370- 8	Urban Geography (Class meets from 2:10-4:30)	5	Holzner	TTh	Kepner 219
WHS	266- 8	Europe 1815-1870	5	Matoren	MTWThF	Kepner 122



# Statistical Information Form Colorado State College--Greeley

If you have not attended Colorado State College since August 31, 1959, you must complete this form and return it to the Registrar's Office prior to registration in order that Registration Materials (IBM CARDS) may be prepared.

**Complete this form with typewriter or print in ink**

**Please complete this line**

Name \_\_\_\_\_  
(Last) (First) (Middle) (Maiden, if applicable)

**(No Nicknames, Please!!)**

Birthdate \_\_\_\_\_  
(Month-Day-Year)

Social Security  
Account Number

Sex: Male ( ) Female ( ) Marital Status: Single ( ) Married ( )

--	--	--	--	--	--	--	--

Permanent Home Address \_\_\_\_\_  
(City) (County) (State) (Country)

If your home is in Colorado, when did this residence begin for you? \_\_\_\_\_

Where were you living during the past 12 months? \_\_\_\_\_

Name of parent or guardian \_\_\_\_\_

Permanent address of parent or guardian \_\_\_\_\_

When did this residence begin for your parent? \_\_\_\_\_

If married, give name of husband or wife \_\_\_\_\_

What was your occupation during the past 12 months? \_\_\_\_\_

City and state of employment \_\_\_\_\_

What was the occupation of your spouse during the last 12 months? \_\_\_\_\_

City and state of employment of spouse \_\_\_\_\_

Name high schools and academies attended:

School Name	City-County-State	Dates Attended	Yr. Graduated

Names of all colleges and universities attended in order of attendance from earliest to latest date.

Failure to list colleges or universities previously attended may result in loss of credit or dismissal.

Name of Institution	City State	Period of Attendance (Quarter and/or Semester and the years)	Date of Graduation (if applicable)	Degree Received (if any)

Have you previously taken CSC correspondence or off-campus courses? Yes ( ) No ( ) When? \_\_\_\_\_

Check your proper Classification: Undergraduate ( ) Freshman ( ) Sophomore ( ) Junior ( ) Senior ( )

Graduate ( ):  
 Master of Arts ( ) Doctor of Education ( )  
 Specialist ( ) Doctor of Philosophy ( )  
 Unclassified ( )

Your proposed degree program: 1. ( ) Teacher Education 2. ( ) Without Teacher Education (Liberal Arts)

Your major(s) \_\_\_\_\_ Minor(s) \_\_\_\_\_

New and returning students: When do you expect to enter (or re-enter) CSC?  
 Fall ( ) Winter ( ) Spring ( ) Summer ( ) Year \_\_\_\_\_

Returning students only: When was your last enrollment at CSC?  
 Fall ( ) Winter ( ) Spring ( ) Summer ( ) Year \_\_\_\_\_

**DO NOT WRITE IN THIS SPACE**

1. \_\_\_\_\_ Student No.
2. \_\_\_\_\_ Alpha No.
3. \_\_\_\_\_ Birthdate
4. \_\_\_\_\_ Sex
5. \_\_\_\_\_ Residence Status
6. \_\_\_\_\_ Classification
7. \_\_\_\_\_ Degree Program
8. \_\_\_\_\_ Major
9. \_\_\_\_\_ Quarter and Year

**DO NOT WRITE IN THIS SPACE**

LAST NAME

FIRST NAME

MIDDLE NAME

MAIDEN, if applicable



# After School

Mix an outstanding campus activities program, a complete community activities program and some of the most spectacular mountain country in the world . . . the result: a delightful summer of relaxation and vacation as well as study at Colorado State College. After one summer in Greeley, you'll see why CSC is a favorite among summer school students and their families.

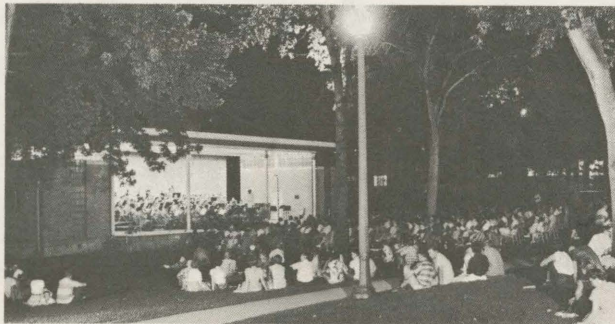
## Summer Education

Provisions may be made for the education of children during the 10-week Summer Quarter. Morning classes will be held in Ernest Horn Elementary School (Nursery, Kindergarten, grades one through six), and the Special Education School. No classes will be held in the secondary school on the campus, although summer sessions are planned for grades two through twelve in Greeley School District No. 6. For further information, write Director, Laboratory School or Director, Special Education School, CSC. Mr. Richard Biddle, assistant principal at Greeley High School, will be glad to furnish any requested information on the School District No. 6 summer school program.

## Family Fun Night

Perhaps the most popular all-around summer quarter activity is Family Fun Night, sponsored by the Division of Health, Physical Education and Recreation each Wednesday night.

Beginning at approximately 7:00 p.m., members of the CSC recreation courses supervise a variety of activities for all age groups. Included in the evenings' diversions are organized relays and circle games, supervised swimming, indoor sports, (badminton, volleyball, etc.), square dancing for all ages on the tennis courts, and recent full-length movies.



Outdoor band concerts at Garden Theatre are a favorite mid-week evening activity for CSC students.



Family Fun Night provides recreation for "kids" of all ages.

## Intramural Sports

Dr. Max Shirley of the Division of Health, Physical Education and Recreation maintains a spirited intramural sports program during the summer quarter. Open to CSC students, the possibilities include softball tournaments with teams usually derived of and named after various states, mixed golf tournaments and bowling leagues.

## Recreational Facilities

Besides campus activities, students are urged to take full advantage of the complete community activities program in Greeley. Facilities include a Community Building, eight city parks, two golf courses, two museums, not to mention movie theaters and numerous restaurants for the pleasure of CSC students and their families.

## Weekends in Colorado

Greeley is ideally located for those who love the awesome beauty of the mountains. Almost any kind of scenery is at your beck and call through various "Circle Trips" from Greeley ranging anywhere from 100 to 250 miles. For instance, Rocky Mountain National Park with more than 84 named peaks at elevations of more than 11,000 feet is but an hour's drive.

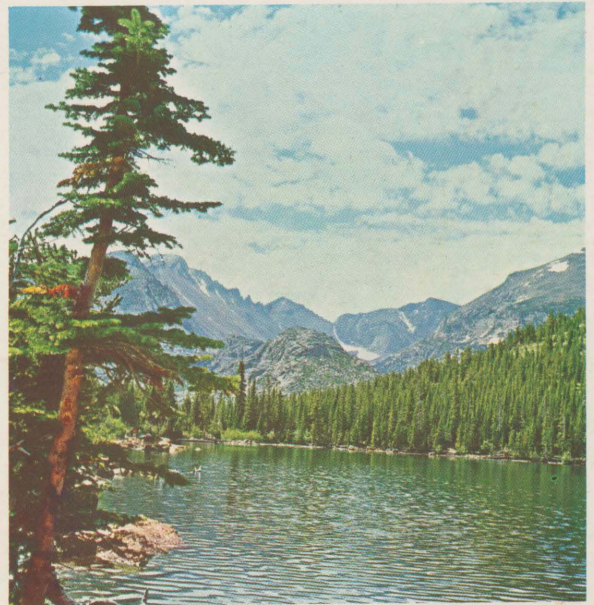
Other popular circle trips include ventures to Central City, the ghost mining town that vividly recalls the era of the Old West; the Cache la Poudre Canyon and Red Feather Lake area, Red Rocks Theater, Denver, capital of the State of Colorado; Colorado Springs, Garden of the Gods, the Air Force Academy, the Royal Gorge, Grand Lake, and many other delightful spots.





CSC's new College Center, opened Fall Quarter, 1965, offers students of all ages a variety of services and conveniences. Included are reading and music listening rooms, a comprehensive bookstore, bowling and other recreational facilities, food services, meeting rooms, and the spectacular Panorama Lounge.

Rocky Mountain National Park, featuring 84 peaks over 11,000 feet, is located 60 miles west of CSC. A favorite park retreat for summer students is Bear Lake, shown right, under the shadow of Majestic Long's Peak.



Students relax in a colorful lounge of McCowen Hall. A second residence hall, patterned after McCowen Hall and designed to house 125 student families, will open this summer.





BIRD TOWERS