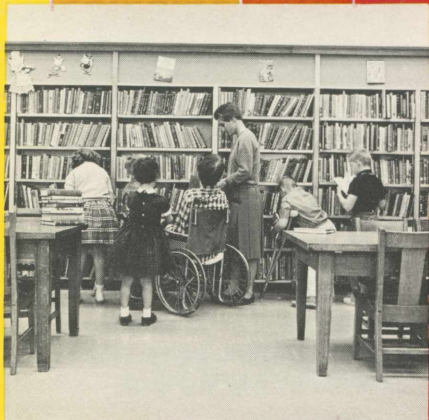


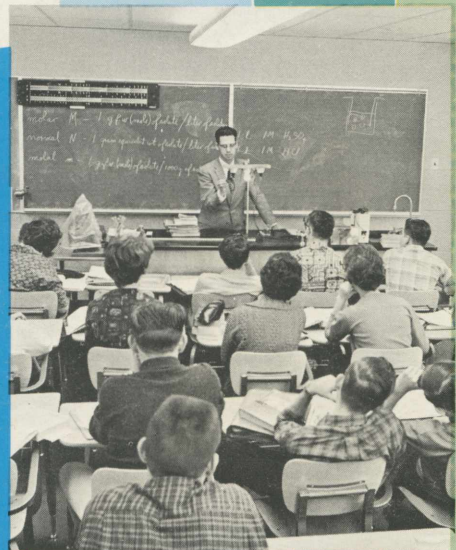
COLORADO STATE COLLEGE BULLETIN



Special Education



Elementary



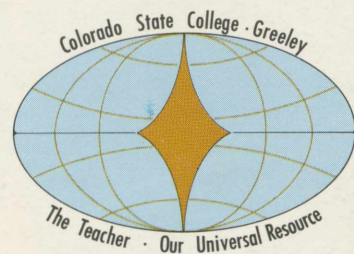
Secondary

SUMMER '65

JUNE 14 - - AUGUST 20, 1965

Greeley, Colorado

1890 · DIAMOND JUBILEE · 1965





Prospective Summer Students:

Today's educator is a person of stature who has earned the respect and admiration of a public that has become more knowledgeable about the needs for ever-strengthening educational programs at all levels.

As the result of this new view of education, the teacher's status has increased immeasurably and people are beginning to recognize the true value of the educator and his keystone position in our society.

In turn, this new position of the teacher has resulted in some challenges to each teacher, to

maintain and strengthen his professional knowledge and skills.

The theme—"Professional Development" has the same meanings and overtones today as it had yesterday, but new dimensions have been added. Professional development today means a deep probing for depth and breadth and an exploration into new ways to do better what we did yesterday.

To some, professional development means study in depth in an academic discipline, while to others it means ferreting out the mysteries of human behavior so that we can better understand and more proficiently teach the student. For yet others, teachers and administrators, it connotes gaining insights into new fields of work and study.

Whatever the purpose of study, there is to be found at Colorado State College a wide variety of courses and programs which relate closely to the professional and personal goals of the teacher.

At Colorado State College the program in the liberal arts and sciences presents a full selection of courses. Courses in the academic majors offer innumerable opportunities for further study. Professional courses in teaching, counseling, administration and research are unsurpassed in quality and scope.

The summer program as described in this bulletin is illustrative of a Colorado State College policy—that of offering a comprehensive selection of courses to meet the individual needs of its students. A careful review of this bulletin will suggest the specific areas which the teacher may wish to select this summer.

The faculty at Colorado State College stand ready to counsel and advise. Collectively, the faculty represent many years of practical experience in all phases of teaching and education; it behooves the prospective student on campus to avail himself of their services. Feel free to write before coming, or upon arrival, to contact the appropriate adviser.

Greeley is a delightful community, ideally suited for a reasonable blending of study and recreation. The Rocky Mountains, the nearby rivers and streams, the many and varied cultural activities sponsored by Colorado State College and Greeley, make possible an exciting and stimulating summer.

Colorado State College will celebrate her 75th anniversary this summer. Many outstanding events are scheduled to commemorate this memorable year. We cordially invite you to join us on the occasion of this celebration.

Good luck during the coming summer.

Cordially,

DARRELL HOLMES
President

COLORADO STATE COLLEGE BULLETIN Series LXV
Number 3, March, 1965. Entered as second class
matter at the post office at Greeley, Colorado, under
the Act of August 14, 1912. Published monthly.

Diamond Jubilee--

A Statement of Beliefs

The year 1965 marks not only the inauguration of Dr. Darrell Holmes as the fifth president of Colorado State College but also the Seventy-Fifth year of the founding of the Normal School at Greeley. The college now is recognized as one of the outstanding colleges of education in the nation.

As Colorado State College enters the fourth quarter of its history under the vigorous and imaginative leadership of President Holmes, it is fitting that students, alumni, faculty, and administration together consider the "Diamond Jubilee" as a time for forming visions of the future—the laying of a **Master Plan** for the next quarter century. What shall such a Master Plan encompass?

Are we, as a college, to continue our steadfast conviction and commitment of the past three-quarters century that the role of the teacher is paramount?

Are we willing to endorse the theme of this anniversary that the "Teacher is the legacy of every child, the foundation of the school, the promise of the nation, and the hope of the world"? If we do endorse this commitment, to what extent are we willing to make the necessary sacrifices, and to establish an essential focus of purpose, in the fulfillment of this conviction? We must be eternally vigilant that the materialism of our age, and the distractions of a technological society, do not seriously disrupt us in the task.

Shall we become creative and positive or negative and apathetic in our thinking?

The planning of a campus is not unlike the planning for urban renewal. We must have the vision, imagination, and capacity to think and see creatively, to assure that our evolving **Master Plan** ultimately results not in an "asphalt jungle" but in a campus environment conducive to contemplation, and those things that constitute the life of the mind. Our architecture, trees, shrubs, and landscapes must continue to be objects that stimulate scholarship. Our student centers, our theaters, and concert halls must become not only places of amusement but forums for leisure as the Greeks envisioned in the society they started. If, as teachers and community leaders, we are to help in rebuilding the nation toward the fulfillment of the promise referred to in our theme, it is imperative that these neglected and often ignored essential values in education rise to the forefront in the decade to come.

What is the place of the student in this Master Plan?

The right to have a teacher is not only the "legacy of the child" but also the legacy of the college student. Our **Master Plan** must, above all, reward the college teacher for his dedication to the classroom and to the student, and for his excellence as a scholar and a teacher. He must become respected, honored, and rewarded for this dedication and excellence as the research professor and the creative worker is rewarded. This renewed emphasis in our **Master Plan** will serve to once again bring the college student back to a realization of his place in the college community, a place where his mind, and the mind of his teacher, join together in a process of first-hand exploration, reflection, and discovery. The student must come to know that this is probably the central reason for a college or a university.

What is the role of college in a rapidly changing society?

The land-grant college and university gave first consideration to the study of agriculture, the mechanical arts, and the natural sciences. With this incentive and support our nation moved forward in these areas, and we have not been surpassed by any other nation of the world. The college and the university in the coming decades must take a similar leadership position in the behavioral sciences, the arts and the humanities. In our recent past these studies were assigned largely to private schools, and institutes with only philanthropic support. It remains now for the colleges and the universities to become the centers, not only for the advancement of the nation's material welfare, but also the centers of culture and for the study of man himself.

E. E. MOHR
Chairman
Seventy-Fifth Anniversary
Committee

TABLE OF CONTENTS

	INDEX
Diamond Jubilee	1, 2
Summer Arts Program	3
CSC Study-Travel Plans	4
Special Courses	5-8
Summer Quarter Courses	9
Summary Table	
Admissions Policy	10
Registration	11
Undergraduate Program	12
Graduate Program	13
Housing, Health Services	14
Tuition, Fees	15
Summer Resident Faculty	16
Schedule of Classes	17-30
Statistical Information Form	31
General Information	32



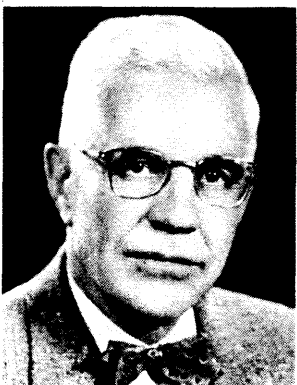
Quillen



Dougherty



McKee



Zeleny

Summer School '65 promises to be a busy and rewarding experience for those attending Colorado State College. In addition to the comprehensive offering of classes described in this bulletin, a challenging and provocative program of special academic, cultural and social activities is planned.

Included in the busy schedule of special attractions are the summer observance of the college's 75th Anniversary, a Program of the Arts to be held throughout the quarter, and numerous other programs to be conducted by divisions and campus organizations.

CSC's Diamond Jubilee

In observance of the college's 75-year history, a program of lectures, concerts and forums have been planned for the quarter, with special emphasis concentrated during the week of July 12.

Highlighting the observance will be the second of two Diamond Jubilee forums dedicated to the discussion of the role of the teacher in the modern classroom. Among the specific topics of the forum will be the question of evaluating teacher effectiveness.

Participants in the forum, scheduled for the afternoon of Friday, July 16, will include such well-known authorities on education as Dr. I. James Quillen, Dean of the School of Education, Stanford University, and former CSC faculty member, and Mr. James Cass, associate education editor of the Saturday Review, along with several other educators of eminence to be named. Cass is the author of the Saturday Review's report on the Berkeley incident.

Another aspect of the Diamond Jubilee is the return to campus of three widely-known former members of the CSC faculty.

Dr. Frances Dougherty, professor of dance at the University of Oregon, School of Health, Physical Education and Recreation, will teach three special courses in contemporary dance. Dr. Dougherty, who received her bachelor's and master's degree here, taught in the Denver Public Schools and at Colorado State College from 1947 to 1959.

Dr. Paul McKee, professor of elementary education at CSC from 1926 to 1960, is known throughout the nation and the world for his work in developing the use and meanings of language at the elementary level. He will be on the instructional staff of a workshop in elementary school reading this summer.

Dr. Leslie Zeleny, professor emeritus of sociology and former chairman of the Division of the Social Sciences, will join the division's summer faculty. A member of the CSC faculty from 1946 until his retirement in 1963, Dr. Zeleny has distinguished himself as a teacher and author, especially in the field of sociometry. He will teach three courses in sociology, including social philosophy.

Summer Program of the Arts

In addition to the Diamond Jubilee activities, the college has reorganized its summer cultural program under the quarter-long Program of the Arts. The intent of this program is to make available to the student a varied and balanced program.

Monday Night Assembly Program

Four times throughout the Summer Quarter, outstanding speakers representing a diversity of academic backgrounds, will be brought to campus for Monday night programs. Three speakers selected to make Summer School '65 appearances are:

Dr. Harold Taylor June 21

World renown educator and former president of Sarah Lawrence College, Dr. Taylor will lead off the series with a discussion on "Moral Conflicts in American Life." Dr. Taylor was instrumental in initiating a program in which returning Peace Corps volun-

teers were trained to help American communities. He has served as host on the television series, "Meet the Professor," is chairman of the National Research Council on Peace Strategy, and is the co-founder of the National Committee for Support of the Public Schools.

Mr. Max Lerner **June 28**

Mr. Lerner, syndicated newspaper columnist, author, and teacher, is currently professor of American Civilization and World Politics at Brandeis University. He is the author of *America as a Civilization*, a best-seller, and *The Age of Overkill*, his most recent work. A world-traveler, Mr. Lerner, recently spent a year in Europe, studying the problems of emerging nations.

Dr. Harlow Shapley **July 19**

Dr. Shapley has served as director of the Harvard College Observatory and is currently Lecturer on Cosmography at Harvard University. The recipient of 18 honorary degrees, Dr. Shapley during his career has presided over eight nation-wide scientific organizations. Among his publications are six books and more than 450 technical articles. He is credited with many important accomplishments in astronomy, including the development of a period-luminosity relation for cepheid variable stars as a measuring device for the universe.

One more speaker will be named at a later date to complete the Monday Night Assembly program. All assemblies will be held at 8:00 p.m. in Garden Theatre.

OPERA

The combined departments of music, theatre and dance will present the opera, "Carmen," for four consecutive nights, beginning August 10. The performance will be under the direction of guest conductor, Dr. Jan Popper, chairman of the Department of Music, University of California at Los Angeles, and one of America's leading opera conductors. In addition to his duties at UCLA, Dr. Popper has served as guest conductor of the Los Angeles Chamber Symphony, the Los Angeles Philharmonic and the San Francisco Symphony.

LITTLE THEATRE OF THE ROCKIES

Contributing outstanding theatrical artistry to the summer program will be the Little Theatre of the Rockies, which presents a bill of five plays. Each production will be staged two nights, Thursday and Friday, beginning at 8 p.m. The program will include: *Death of a Salesman*, *The Solid Gold Cadillac*, *Come Back Little Sheba*, *Send Me No Flowers* and *A Man for All Seasons*.

BOOK REVIEWS

For the 41st consecutive year, members of the CSC faculty will present a series of 16 book reviews, ranging from biographies, to novels, to resource books. Review meetings convene at 4 p.m. Monday through Thursday for four weeks beginning July 12. Dr. Darrell Holmes, president of the college, and Dr. Donald Decker, dean of the college and director of the Summer Quarter, will launch the review program.

OTHER PROGRAMS OF THE ARTS ACTIVITIES

Other activities planned to round out the Program of the Arts include a Band Concert presented by the Music Division each Tuesday night in Garden Theatre; a presentation by the Concert Choir near the end of the quarter; a concert in contemporary dance; various student art exhibits and special programs planned by the seven academic divisions.

* * *

The programs mentioned above do not include the Family Fun Night, scheduled each Wednesday night throughout the quarter; the Institute for Respiratory Fitness (see page 8 for details) and two exhibits of textbooks and instructional materials.



Taylor



Lerner



Shapley



Popper

CSC's Study-Travel Courses

Earn academic credit at Colorado State College during Summer '65 and, at the same time, travel to Washington and New York, or London, Berlin, Rome and Paris?

Yes, it's possible. Again this summer, Colorado State College is offering its two study-travel plans for those students wanting to see and experience first-hand those places so often mentioned in the classroom.

Washington, D. C., and the United Nations building in New York City will be the destination of one of CSC's traveling classrooms June 5-15. Contemporary American foreign policy will be the object of study.

A 36-day tour of Western Europe will climax a summer's study of European contributions to American culture. This plan combines 28 days of in-depth study on campus from June 16 to July 13, followed by an on-the-spot tour of Europe from July 14 to August 18.

SS 220 European Contributions to American Culture June 16-Aug. 18

(Fifteen hours credit in social science or four hours of individual studies and 11 hours in social sciences.)

Offered in cooperation with the Institute of European Studies, a non-profit organization, this course offers the opportunity for international education by tracing the historical, economic and artistic influences of Europe on American culture.

Students first attend 28 days of on-campus study of European history, geography and humanities under Profs. Arnold, Koller and Woerner.

Upon completion of this segment of the program, the class will embark on a 36-day tour of Europe via jet from Denver. Countries included in the tour are England, the Netherlands, Belgium, West Germany, Austria, Switzerland, Italy and France. Faculty members of universities throughout Western Europe will lecture to students. European tour guides engaged by the Institute of European Studies will accompany the tour throughout Europe.

Students may earn 15 hours of academic credit in social sciences or 4 hours of individual studies and 11 hours in social sciences. The credit may be applied toward a graduate or undergraduate degree with prior approval of the academic advisor and major department. New graduate students must apply for admission to a formal degree program. Students from other institutions must make arrangements with their own college or university for transfer of credit.

Travel costs from Greeley to Greeley are \$1,215. All travel to and from Europe will be by jet at group flight rates. Also included is air transportation to 12 cities during the tour.

Dr. Dean A. Arnold is tour director. Please contact Dr. Arnold or Dr. Sam Gates, dean of the graduate division, for additional information. All applications must be submitted no later than April 1, 1965.

Students participating in the 1964 CSC study-travel tour to Europe hear a lecture by a European professor in Versailles.



The United Nation's General Assembly.

USH 272 Contemporary American Foreign Policy June 5-15 (Three hours credit)

In Washington, D. C., members of the class will hear lectures at the State Department and observe the Foreign Relations Committees of both houses. Also scheduled is a trip to the National Archives where the class will examine major historical documents, and an optional tour of the Arlington National Cemetery and Mount Vernon.

In New York, participants will tour the U.N. building, be briefed on America's role in the world organization, and will attend U.N. meetings if any are in session. Saturday will be free for those wanting to visit the World's Fair.

Total cost of this course will be about \$225 plus tuition, to be paid as follows: \$25 in advance reservation deposit before May 1 and the remainder before May 15. Students will not need housing in Greeley because the class departs by train on registration day (June 5) and returns on June 15.

The course may be taken either as a single three-hour course or as three hours of a student's program for the summer quarter. For further information, contact Dr. Arthur Reynolds, Division of the Social Sciences, CSC.



(TEAR OFF)

Please use
the attached

**REPLY
CARD**

to order
additional
materials and
to inform the
college of your
intention to
enroll at

Colorado State College

for the

Current Summer Quarter

Special Courses

Course No.	Course Description	Date	No. Weeks
------------	--------------------	------	-----------

Fine Arts

FA 228 Seminar in Secondary Art June 21-July 2 (2)

The seminar is a survey and demonstration of new ideas in art techniques and materials essential to a secondary school art program. Student participation in selected areas. (Two hours credit)

FA 230 Seminar in Elementary Art
July 19-30; Aug. 2-13 (2)

This course is designed to give the graduate student a philosophy of art education; an understanding of and an opportunity to participate in the essential art activities for the elementary school; and to develop his interest and enthusiasm for the teaching of art. Emphasis is given to the creative approach and the integration of the art activities into the entire school program. (Two sections, two hours credit each)

Home Economics

HEC 244 Personal Improvement of the Teacher
June 21-July 9 (3)

Individual problems will be considered with emphasis given to the development of expressive personality traits and attractive personal appearance. Opportunities for improvement of appearance through exercise, posture, diet, make-up, use of voice and selection of clothing for the individual will be provided. (Three hours credit)

HEC 274 Equipment Selection and Maintenance
July 19-30 (2)

Methods of selecting and maintaining proper equipment and utensils for the home, school or business will be studied through individual reports, projects, field trips, demonstrations, and classroom discussions. To provide the proper background for the student, the fundamental scientific principles of heat, mechanics, electricity and light will be studied. (Four hours credit)

HEC 301 Supervision of Student Teaching
in Home Economics June 21-July 16 (4)

Designed to prepare the home economics teacher for the role as a supervisor of student teachers, this course will concentrate on developing skills necessary to providing desirable experiences for the student teacher from orientation through full classroom responsibility. Techniques of planning and evaluation and discussions of teacher-student relationships will be emphasized. (Two hours credit)

HEC 376 Problems in Clothing Construction
June 21-July 9 (3)

Individual figures will be analyzed with corrective alteration procedure following. Basic garments belonging to the individual will then be altered (excluding tailored garments). Unusual dressmaking details, including yoke and collar treatments, will be designed for the distinctive accent on these garments. Details in the purchasing of quality clothing for individual figure types will be discussed. (Three hours credit)

Industrial Arts

IA 240 Graphic Arts Design and Layout July 12-23 (2)

The course will consist of the study of the origin, development and application of the principles of design in the field of typography. Special emphasis will be placed on the selection and use of type and illustrations for printing layouts. (Three hours credit)

IA 254 Seminar in Industrial Arts for Elementary Schools
June 28-July 9; July 26-Aug. 6 (2)

The development of basic skills through elementary work in wood, metals, and other accessible materials will be reviewed. The adaptation of work to classroom or small shop and creative work with limited equipment are discussed. (Two sections, three hours credit each)

Course No.	Course Description	Date	No. Weeks
------------	--------------------	------	-----------

Business Education

BUED 280-8 Business Education Workshop:
Developing Economic Understandings
June 16-July 2 (3)

The theme of the workshop will be "Programs for Economic Opportunity in American Society." Various programs sponsored by both the federal and state governments will be studied by hearing lectures by people directing these programs and by observing some of the programs in action. A field study is one of the requirements of the course. (Three hours credit)

BUED 280-28 Business Education Workshop:
Machine Shorthand July 19-Aug. 6 (3)

While studying methods of teaching machine shorthand, participants in the workshop will apply these methods in learning how to record and transcribe dictation using a Stenograph machine. The special fee of \$10 for the workshop will cover the rental of special machines, supplies, and textbooks. (Three hours credit)

See Also ED200-8 below.

Education

ED 200-7 Education Workshop: Elementary
School Modern Mathematics June 21-July 2 (2)

The general purpose of the workshop is to acquaint the teacher with contemporary content of elementary school mathematics and the methods of introducing it to children. Topics which have been added to or re-emphasized in the elementary school curriculum will be presented with special emphasis on the evaluation of exploratory programs.

Topics to be presented and discussed include numeration systems, number theory, sets, mathematical sentences, the number line, graphs, geometry, various algorithms, and mental computation.

Dr. Klaas Kramer, CSC's expert in elementary school mathematics, will conduct the workshop. (Three hours credit)

ED 200-27 Education Workshop:
Elementary School Reading July 6-16 (2)

The reading workshop will feature the teaching of the fundamental reading skills related to word perception, comprehension, and beginning reading. The instructional staff will feature Dr. Paul McKee, nationally known author in reading and elementary school English. Dr. McKee is completing the last chapters on a new professional book on reading which is based on 40 years of experience. His class presentation will include new and significant procedures in teaching the fundamentals of reading. (Three hours credit)

ED 200-37 Education Workshop:
Outdoor Education June 21-July 2 (2)

The workshop is designed to provide an opportunity for teachers, supervisors, coordinators, and administrators to become acquainted with the comprehensive interdisciplinary approach to the broad area of outdoor education. The instructional staff for the workshop will include interested and qualified faculty from the academic divisions in the college and the laboratory school. A special emphasis will be centered around the sixth, seventh, and eighth grade outdoor laboratory school program. A major portion of the workshop will be devoted to presentations dealing with the relationship of the various academic areas to the methodology of outdoor education.

Highlights of the workshop will include a Saturday field trip to the "Old Man Mountain" Field Campus, the Rocky Mountain National Park, the Trail Ridge Highline Drive, and a study of the Greeley community through field trips. (Three hours credit)

Special Courses

Course No.	Course Description	Date	No. Weeks
ED 200-47	Education Workshop: Library Science	June 21-July 2	(2)

Concentrating on the problems of the small-to-intermediate size school library, this workshop will delve into the problems of library organization, cataloging, book selection, reference work, and establishing and maintaining a periodicals department.

Selected school libraries will be available for visitation, including the college Laboratory School library.

Dr. Lucy Maddox, librarian at Spring Arbor (Mich.) College and a member of the CSC summer guest faculty, will be in charge of the workshop. **(Three hours credit)**

ED 200-57	Education Workshop: Public Relations	July 19-23	(1)
-----------	---	------------	-----

"School Public Relations in an Era of Conflict" is the theme of this conference, featuring top-flight speakers, workshop sessions, and technical consultative assistance. The total program is geared to the every-day public relations issues that concern public school educators at all levels of instruction.

Visiting speakers will discuss what labor, business, citizens, and educators expect of their schools. The workshops will consider how to achieve enriched educational goals and interpret them to the public and how to solve "knotty" human relations problems in the academic and activity programs.

Consultative aid will be available on how to do opinion surveys, the mechanics of producing a publication, utilization of radio and TV and news releases for the press. **(Two hours credit)**

ED 200-8	Workshop in Education— Vocational Education	June 21-July 2	(2)
----------	--	----------------	-----

Designed for persons involved in vocational education programs as expanded through recent legislation. The workshop is especially intended for those in distributive education, homemaking, industrial arts, office occupations, trade and industrial education, counseling and guidance, and administration.

Participants will become familiar with the total area of vocational education and its important role in our economy today, gain a working understanding of all phases of vocational education and current legislation, and develop plans and procedures for use in their own particular situations.

Emphasis will be placed on combining parts of the different vocational areas and methods of teaching especially adaptable to this approach.

Local, state, and national specialists will serve as resource personnel for the workshop. **(Three hours credit)**

College Student Personnel Work

CSPW 252	Workshop for Residence Hall Directors and Housemothers	June 21-25	(1)
----------	---	------------	-----

This workshop will discuss the problems of management, counseling, discipline and food service which are faced by residence hall directors and fraternity and sorority housemothers. This workshop is especially helpful for the person entering the field. **(Two hours credit)**

Educational Psychology and Guidance

EPG 214	Guidance Workshop	June 21-July 2	(2)
---------	-------------------	----------------	-----

The workshop is designed to provide concentration of time and study in a special problem in guidance. The needs and interests of class members will determine to a certain extent the course content. **(Three hours credit)**

Course No.	Course Description	Date	No. Weeks
Special Education			

SPED 201 and 211	Mental Retardation	June 28-July 23	(4)
------------------	--------------------	-----------------	-----

These workshops will be held for four weeks at the State Home and Training School at Wheatridge, a suburb of Denver, Colorado. It will feature lectures, demonstrations and observations under the direction of Miss Dorothy Pasch, a member of the guest faculty and Dr. Tony Vaughan, director of special education at CSC. Topics to be discussed are problems of mental retardation, overall objectives of education, total life history approach to mental retardates and the role of the family and parent organizations. A limited number of students may live at the Home; however, it is not essential to do so. For additional information, write to Dr. Vaughan. **(Eight credit hours)**

SPED 241	Survey of Education of the Visually Handicapped	July 19-30	(2)
----------	--	------------	-----

The educational, social and emotional implications of visual disability will be the general topic of this course. Class study will include an overview of the history and current practices in educational and rehabilitation planning, organization and implications of various educational methods from pre-school through college, and a review of private and public agencies, their philosophies and programs. Guest speakers will include Mr. Carl J. Davis, Perkins School for the Blind, Watertown, Mass.; Miss Georgia Lee Abel, San Francisco State College; and Dr. Berthold Lowenfeld, former superintendent, California School for the Blind. **(Three hours credit)**

Health, Physical Education and Recreation

General

HPER 63	Advanced First Aid (One hour credit)	June 16-July 16	(5)
---------	---	-----------------	-----

HPER 64	Instructor's Course in First Aid (One hour credit)	July 19-Aug. 20	(5)
---------	--	-----------------	-----

HPER 65	Senior Life Saving (One hour credit)	June 16-July 16	(5)
---------	---	-----------------	-----

HPER 66	Water Safety Instructor's Course (One hour credit)	July 19-Aug. 20	(5)
---------	---	-----------------	-----

HPER 275	Advanced Driver Education	Aug. 2-13	(2)
----------	---------------------------	-----------	-----

Primary emphasis in this course will be the improvement of driver education instruction with reference to the revised Colorado certification requirements for driver education instruction. Also included in the course will be development of improved testing procedures and instructional aids. **(Three hours credit)**

Dance

HPER 248	Advanced Techniques of Teaching Dance Activities	June 21-July 2	(2)
----------	---	----------------	-----

This workshop deals with the problems and procedures of teaching social, square, and folk dance. Dr. Francis Dougherty, professor of dance at the University of Oregon and former CSC dance instructor, will serve as guest lecturer in this series of dance workshops. **(Three hours credit)**

HPER 256	Workshop in Contemporary Dance	June 21-July 2	(2)
----------	-----------------------------------	----------------	-----

The problems connected with dance concerts and performances will be discussed. **(Two hours credit)**

HPER	Dance History and Philosophy	July 5-16	(2)
------	------------------------------	-----------	-----

The history and development of dance will be traced in this workshop. **(Three hours credit)**

Special Courses

Course No.	Course Description	Date	No. Weeks
------------	--------------------	------	-----------

Recreation

HPER 200 Workshop in Outdoor Recreation July 5-16 (2)

The workshop will emphasize the relationship of outdoor recreation to the broad area of outdoor education; the historical background and development of outdoor recreation; the findings of the Outdoor Recreation Resource Review Commission; the significance of the Bureau of Outdoor Recreation; the importance of the broad multidisciplinary approach to outdoor recreation; and will provide instruction in outdoor skill activities. Qualified resource persons from federal, state, professional, and private agencies will participate in the workshop. (Three hours credit)

Team Sports

HPER 245 Advanced Techniques in Teaching Gymnastics Activities Aug. 2-6 (1)

This course is designed to assist the high school or college physical education teacher with special problems in teaching and officiating gymnastics activities. (Two hours credit)

HPER 247 Advanced Techniques in Teaching Team Sports See dates below (1)

This class, in two different sections, discusses the problems of teaching and officiating track and wrestling. Mr. Tom Benich, CSC track coach, will head the workshop on track July 12-16. Mr. John Hancock, CSC wrestling coach, will conduct the workshop in wrestling on July 26-30. (Two sessions, two hours credit each)

HPER 265 Advanced Techniques of Teaching Football to Men July 5-9 (1)

Mr. William Heiss, CSC's head football coach, will lead the workshop in a discussion of the special problems connected with the organization, strategy and personnel of football. (Two hours credit)

HPER 266 Advanced Techniques of Teaching Basketball to Men July 19-23 (1)

Dr. George Sage, head basketball coach at CSC, will lead the workshop in a discussion of the special problems connected with the organization, strategy, and personnel of basketball. (Two hours credit)

Speech

SP 248 Workshop in Speech Education June 28-July 9 (2)

This workshop provides an opportunity for teachers to study cooperatively the problems involved in teaching speech. The content of the workshop will be especially designed to meet the individual needs of participants, but will cover the general areas of curriculum, class instructional projects, co-curricular speech activities, remedial techniques, evaluation, etc. (Three hours credit)

Journalism

JOUR 201 Sponsorship of the School Newspaper June 16-Aug. 6 (8)

Designed primarily for the new student publications adviser, this workshop will feature instruction in all phases of preparation and publication of a high school newspaper. Classroom instruction will be supplemented by practical experience on the *Summer Mirror*. (Three hours credit)

Music

MUS 159 History of Music II June 16-July 16 (5)

Prerequisite, MUS 158. A study of historical changes which took place in music in the Baroque Period (1600-1750) and the Classical Period (1750-1800) with emphasis on changes caused by the new Monodic style found in opera, and the beginning of instrumental music. (Two hours credit)

Course No.	Course Description	Date	No. Weeks
MUS 160	History of Music III	June 16-July 16	(5)

Prerequisite, MUS 159. A study of the musical changes caused by the Romantic, Post-Romantic and Impressionistic periods from 1800 to 1920. (Two hours credit)

Mathematics

MATH 31 Calculus with Analytic Geometry I June 16-July 16 (5)

Prerequisite, MATH 25. A combined course in Analytic Geometry and Calculus, fundamental principles of beginning analytic geometry, including different forms of the equations of a straight line, are developed. Elementary phases of both differential and integral calculus, along with various applications of these subjects, are considered. (Five hours credit)

MATH 32 Calculus with Analytic Geometry II July 19-August 20 (5)

Prerequisite, MATH 31. A continuation of Math 31 of differential and integral calculus combined with analytic geometry, together with applications from all three fields. Special emphasis in calculus on transcendental functions, and analytic geometry on conic sections. (Five hours credit)

MATH 277 Mathematics Teachers Workshop I (Elementary) June 21-July 2 (2)

This workshop will feature an intensive study of geometry in the elementary grades, kindergarten through six. Students will be allowed to work a project of their own choosing. (Three hours credit)

MATH 278 Mathematics Teachers Workshop II (Junior High) July 6-16 (2)

Opportunity will be provided for teachers to discuss and share problems encountered in teaching modern junior high school mathematics and work on a project of their own choosing. (Three hours credit)

Science

SCI 207 Aerospace Education Workshop July 5-16 (2)

The purpose of this course is to provide the elementary and secondary teacher with a general background in aviation and an understanding of the air and space age. Subject matter will include the elementary concepts of aircraft, rocket and satellite development, weather, navigation, theory of flight, and aviation in education. (Three hours credit)

SCI 208 Elementary Science Workshop July 26-Aug. 6 (2)

Provision is made for public school groups and individual teachers to organize science activities in their schools. Visual aids, laboratory materials, demonstrations, experiments, discussions, museums, children's literature, field trips and professional literature will be considered within the total program. (Three hours credit)

BIO 257 Conservation of Natural Resources June 21-July 2 (2)

A study of the relation of natural resources to the development of man and his culture. Units of study are organized on soil, water, forests and forest products. Range management, wildlife, and mineral resources are also covered. (Four hours credit)

CHEM 40 Principles of Chemistry I June 16-July 16 (5)

This course introduces the student to the principles of chemistry, together with some descriptive chemistry, to illustrate these principles. (Five hours credit)

Special Courses

Course No.	Course Description	Date	No. Weeks
CHEM 41	Principles of Chemistry II	July 19-Aug. 20	(5)

Prerequisite, CHEM 40. This course is a continuation of the principles of chemistry, together with the descriptive chemistry necessary to illustrate these principles. (Five hours credit)

ESCI 230	Common Minerals and Rocks	July 12-24	(2)
----------	---------------------------	------------	-----

A laboratory course in the recognition of common minerals and rocks. Each student will collect and prepare a set of specimens for his classroom. (Three hours credit)

Social Science

SS 220	European Contributions to American Culture	June 16-Aug. 18	(10)
--------	--	-----------------	------

(Fifteen or eleven hours credit) See page 4 for details.

GEOG 392	Syracuse U. Summer Field Course in Geography	Aug. 9-Sept. 10	(4)
----------	--	-----------------	-----

Colorado State College has been selected as the site for the Syracuse University Summer Field Course in Geography. The course will be open to Syracuse University graduate students although CSC will register students under Geography 392. To enroll, applicants must be graduate students at CSC at least two quarters prior to

Course No.	Course Description	Date	No. Weeks
------------	--------------------	------	-----------

Summer Quarter and must have permission of the geography staff. Dr. Frank Koller is the CSC coordinator of the project. Regular geography staff members of Syracuse University will direct the program for Syracuse University. All inquiries concerning the program should be directed to Dr. Koller, Division of the Social Sciences, CSC (Eight hours credit)

USH 272	Contemporary American Foreign Policy	June 5-15	(2)
---------	--------------------------------------	-----------	-----

(Three hours credit) See page 4 for details.

WHS 332	Interrelationship of Western and Eastern Civilizations	June 16-July 16	(5)
---------	--	-----------------	-----

Content of this class will trace the historical origins of the division of Western democracies and communistic Russia; the impact of Western civilization upon India, China, Japan, and Southeastern Asia; and the more recent counterimpact of the non-Western civilizations. The class will also explore the possibility of reconciling the conflicting ideologies through a more inclusive cultural ideal. (Three hours credit)

Non-Collegiate

Frontiers of Science	June 21-Aug. 13
----------------------	-----------------

Conducted for the gifted high school student. The Frontiers of Science Institute will discuss advanced theories and new information in the fields of the biological and physical sciences. The institute is scholarship-sponsored and will not duplicate high school courses. For details, write to Dr. LeRoy Kerns, Institute Director, Laboratory School, CSC.

Institute of Health and Fitness

June 23-25, 1965

The Institute in Respiratory Health and Fitness is the second in a series of forums presented by Colorado State College, the Department of Health, Education, and Welfare and various national, state and regional health organizations, which delve into the contemporary problems of health and physical fitness.

Following very closely the format pioneered in the 1963 Cardiovascular Institute, the program will feature presentations by experts from throughout the nation followed by reactor panels composed of state and regional authorities. Scheduled to be held from 9 a.m. to noon in the Little Theatre, the Institute is designed to inform the layman, inservice and prospective teacher, and professional health personnel. The Institute is open to the public and summer students free of charge. No academic credit is given.

Topics to be discussed include:

Smoking and respiratory disease • Physiology and function of the respiratory system • Air pollution and its effects on respiratory efficiency • The problem of strep throat and other upper respiratory conditions among high school and college age young people • The continuing problem of tuberculosis • Health education and respiratory health • The role of exercise in respiratory health • The role of the school in preventing and detecting respiratory illness.

Participants in the institute will include:

Miss Betsy Palmer, well-known television actress and honorary chairman of the 1964 Christmas Seal campaign.

Gardner Middlebrook, M.D., Berkeley, California. Dr. Middlebrook is one of the world's authorities on tuberculosis and is a leader in basic research on the TB germ leading to the perfection of an effective TB vaccine.

Roger Mitchell, M.D., Denver. Dr. Mitchell is director of the Webb-Waring Institute at the University of Colorado Medical Center, noted for its research on respiratory diseases. A specialist in chest diseases, Dr. Mitchell is noted for his work on the effects of smoking.

Capt. Robert O. Peckinpaugh, M.D., Great Lakes Naval Station, Illinois. Capt. Peckinpaugh is the officer in charge of one of the four Naval Medical Research Units in the world. He is a specialist in strep throat and upper respiratory conditions.

Albert Roberts, M.D., Washington, D.C. Dr. Roberts, a specialist in internal medicine, is chief of the Cardio-Pulmonary Diseases section of the U.S. Public Health Service, Washington.

Paul Hunsicker, Ph.D., Ann Arbor, Mich. Dr. Hunsicker is chairman of the Department of Physical Education for Men at the University of Michigan and has done research on the influence of exercise on the respiratory system.

Leslie W. Irwin, Ph.D., Boston, Mass. Dr. Irwin is professor of Health Education at Boston University and one of the top national authorities on health education in public schools and colleges.

Edward K. Williams, M.D., San Mateo, Calif. Dr. Williams, a noted chest specialist, is director of medical services for the College of San Mateo and authors a health column published in numerous California newspapers under the auspices of the California Medical Society.

Miss Charlotte Leach, MPH, New York, N.Y. Miss Leach is a school health consultant for the National Tuberculosis Association.

Summer Quarter Classes

Division	(a)	(b)	(c)	(d)	(e)
Department	1-99	100-199	200-299	300-399	400-499
Arts					
Fine Arts	1, 17, 54.	124, 127.	200, 202, 203, 204, 212, 216, 217, 220, 222, 228, 230, 232, 241.	301, 303, 304, 317, 319, 320, 324, 327, 328, 335, 336.	
Home Economics	73.	192.	203, 244, 264, 267, 274, 275.	301, 304, 376, 386, 387, 396.	
Industrial Arts	41, 50, 72.	143, 154.	211, 216, 217, 218, 219, 220, 230, 232, 240, 243, 254, 256, 257, 272, 274, 275, 281, 290.	335, 336, 339, 344, 352, 362, 371, 373, 375, 380, 381.	
Education		101‡, 109, 110, 111, 112, 113, 115, 139.	200, 206, 207, 208, 222, 223, 227, 249, 295‡, 296.	302, 308, 309, 310, 311, 312, 313, 314, 315, 316, 319, 320, 321, 322, 323, 324, 325, 330, 331, 332, 341, 342, 343, 344, 348, 351, 355, 365, 367, 369, 380, 391, 395, 398.	443, 444, 461, 462, 463, 492.
Business	72, 76.	115, 158, 171.	252, 253, 257, 285, 286, 287.	320, 333, 341, 379.	
Business Education			262, 280.	353, 355, 356, 357, 370, 372, 373, 374.	401, 403.
College Student Personnel Work			252.	351, 352, 353, 354, 358.	453.
Educational Psychology and Guidance	20*, 21.	101, 140‡, 170, 184.	214, 230, 275, 280, 285.	311, 313, 314, 315, 317, 332, 340, 347, 370, 371, 373, 374, 380, 383, 384, 388.	415, 416.
Library Science			280, 281, 282, 283, 284.		
Special Education			200, 201, 202, 210, 211, 212, 230, 231, 240, 241, 242, 243, 244, 245, 250, 251, 253, 260, 262, 264, 265, 270, 273, 274, 280.	301, 302, 303, 311, 343, 344, 345, 350, 363, 371, 372, 390, 394, 395, 396.	401, 403, 411.
Health, Physical Education and Recreation	3‡, 12‡, 16‡, 20‡, 22‡, 25‡, 26‡, 34‡, 61*, 62, 63, 64, 65, 66, 88.	101, 102, 121.	200, 201, 205, 220, 226, 232, 235, 245, 246, 347, 248, 250, 252, 256, 257, 261, 265, 266, 268, 270, 271, 272, 274, 275, 280.	304, 312, 325, 340, 344, 375, 376.	401, 403, 405, 406.
Humanities					
Communications	1*, 2*, 3*.				330.
English	1*, 2*, 3*. 49.		200, 211, 227, 228, 231, 258, 259, 260, 261.	301, 302, 304, 306, 312, 314, 315, 319, 325, 350.	
Foreign Language					
French	5, 6, 7.				
German	1, 2, 3.				
Speech	16.		208, 217, 218, 228, 248, 251, 270, 275, 280, 294.	350.	
Drama (Sp)		113, 115.	210, 213, 220.	315, 316, 330.	
Journalism			201.		
Music	10, 49, 52.	159, 160, 190, 193, 194, 196.	202, 205, 206, 216, 217, 220, 224, 242, 243, 249, 251, 253, 256, 258, 262, 270, 272, 274, 276.	305, 310, 311, 317, 318, 319, 320, 323, 325, 350, 351, 380, 383, 384, 385.	402, 420.
Nursing		105.			
Science	3*, 4*, 5*.		207, 208, 209.	330.	
Applied Statistics			275.	376.	475.
Biology	53.		252, 257, 296, 297, 298, 299.	357.	
Botany	23.		221, 227.	320, 325.	
Chemistry	40, 41, 46.	147.	243, 246, 249, 280, 281, 282, 285, 291, 292, 293.	344, 346.	
Earth Science		130, 136.	230, 233, 234.		
Mathematics	25, 31, 32, 33.		201, 202, 203, 222, 223, 233, 242, 243, 250, 277, 278, 281, 290, 291.	340, 344.	
Mathematics Education				364, 372, 373, 374.	471.
Physics	61, 62.	162.	261, 264, 268.		
Science Education			270, 271, 275.	372, 373, 374, 375, 376.	477.
Zoology	11.	114.	210, 211, 215.	310, 318.	
Social Science	81*, 82*, 83*.		200, 220.	330.	
Anthropology	20.		225.	323.	
Economics		102.	210, 237.	320.	
Geography	10, 48.		221, 244, 250.	360, 365, 370, 392.	
Political Science	40.	172, 176.	275, 280.	377, 379.	
Sociology	50.		204, 206, 291, 292.	310.	
Social Studies Education				305.	
United States History	70, 75.		209, 246, 250, 251, 272.	356, 366.	
World History	32.		200, 264, 267.	332, 333, 372, 399.	

*General Education courses required of all undergraduate students regardless of program.

‡Advance Teacher Education program courses.

†Physical Education Activity Courses.

Course numbers are divided into five groups: (a) 1 to 99 are primarily for the first and second-year students; (b) 100 to 199 are primarily for third and fourth-year students; (c) 200 to 299 are primarily for fourth-year and graduate students; (d) 300 to 399 are for graduate students; (e) 400 to 499 are primarily for candidates for the doctorate. Please consult the schedule of classes pages 17-30 for time, course title, hours credit, instructor and class location. Course description and division programs may be found in the 1964-65 General Catalog.

Admissions Policy

Students applying for admission to Colorado State College for Summer Quarter should complete and return the reply card bound into this bulletin. Students applying for the first time or for the first time since September, 1959, should complete and return the Statistical Information Form on page 31 of the bulletin. Additional information required as part of application for admission depends upon the status of the student as defined below. Inquiries concerning the graduate program or graduate admission should be directed to the Dean of the Graduate Division, Dr. Sam Gates. Undergraduates should contact the Registrar, Mr. George F. Sanderson, for application forms. There are no admission or evaluation fees.



All campus walks lead to Frasier Hall, location of administrative offices and drama and music facilities.

Graduate

An application in triplicate and two copies of certified transcripts of all previous academic credits should be filed with the Dean of the Graduate Division. All classified graduate students are required to take an English usage examination. A completed medical examination form and two pictures must also be submitted.

Transfer Students

Students seeking a graduate degree from CSC may transfer eight quarter hours toward a master or specialist degree and 12 quarter hours toward either doctorate degree. The college accepts a maximum of 135 quarter hours transfer credit on undergraduate programs. Only 90 hours of the transferred credit may be granted by junior colleges. All degree-seeking students must submit transcripts of previous college work and a health report. Undergraduate students must also submit a transcript of high school studies.

Freshmen

Students who are entering college for the first time should write to the Registrar, Mr. George F. Sanderson, for information and application forms. Special programs for freshman students are described on page 12. To be eligible to apply for regular admission, in-state freshmen must graduate in the upper two-thirds of their class and out-of-state students in the upper half.



A setting for summer study. An overview of the reference facilities in Carter Hall, the college's library.

Registration

Registration for regular classes will take place June 14 and 15 in the Student Union Ballroom and Gunter Hall Gymnasium. Registration materials may be obtained in the Student Union Ballroom and students will confer with their advisers in Gunter Gymnasium.

Summer Quarter students will register as follows:

June 14	8 a.m. to noon	M-Z graduate students
	1 p.m. to 4 p.m.	M-Z undergraduate students
June 15	8 a.m. to noon	A-L graduate students
	1 p.m. to 4 p.m.	A-L undergraduate students

To insure proper registration, follow these steps:

1. Registration materials may be obtained at Frasier 115 on Thursday and Friday, June 10 and 11. Registration materials will be in the Student Union Ballroom on June 14 and 15.
2. Students should fill in all registration cards accurately and as completely as possible before entering Gunter Hall to see advisers and major professors.
3. Enter Gunter Hall via the north door and locate your academic adviser or major professor. Secure the adviser's signature on (a) Registration Form and (b) Accounting and Business Office Fee Payment card. At this point, be sure all cards are 100 per cent complete and signed by the faculty adviser and not by the instructor of the class.
4. Go to the specific division tables to secure your correct class cards and laboratory cards (if applicable). Compare registration cards with these class cards to be absolutely sure correct class cards have been given you.
5. Enter the Women's Gym via the west archway from the Men's Gym. Stop at the checking tables where "checkers" will check every card for possible errors.
6. Veterans who must complete Veterans Administration forms must see Mr. Harry Collins, Frasier 7.
7. Leave the Women's Gym via the west door and proceed to Frasier Hall for payment of fees.

Students who complete registration after June 15 will be assessed a late registration fee as described on page 15 of the Summer Bulletin. No registration for 10-week classes will be permitted after 4 p.m., Friday, June 18.

Special Courses

Registration for one to eight week courses may be completed during regular registration, June 14 or 15, or at the Records Office, Frasier 126 after June 15. Students must register before the first class meeting.

A student may register for any class for no credit by paying regular tuition and fees. Class cards may be obtained from the Dean of the College. No audit or visitors cards are issued.

Graduation

Graduation will be at 7 p.m., Thursday, August 19, in the Garden Theater. Graduating students are required to participate in graduation exercises. Caps and gowns may be rented from the college bookstore.

Final Examinations

Final examinations will be held Thursday and Friday, August 19 and 20, according to the published schedule unless special arrangements are made by the instructor for special examination periods. Graduating students are exempt from final examinations. A student who must be absent any part of the last week of the course or for final examinations makes arrangements with his instructor to receive an Incomplete if his reasons and previous work warrant this privilege. If arrangements are not made, the student receives an F. Only in extreme emergency (death, illness, jury duty, armed services directives) may an instructor grant an early examination privilege which requires a fee and a special examination.

Summer School Calendar

JUNE

S	M	T	W	Th	F	S
			1	2	3	4 5
6	7	8	9	10	11	12
13	14	15	16	17	18	19
20	21	22	23	24	25	26
27	28	29	30			

JULY

S	M	T	W	Th	F	S
					1	2 3
4	5	6	7	8	9	10
11	12	13	14	15	16	17
18	19	20	21	22	23	24
25	26	27	28	29	30	31

AUGUST

S	M	T	W	Th	F	S
1	2	3	4	5	6	7
8	9	10	11	12	13	14
15	16	17	18	19	20	21
22	23	24	25	26	27	28
29	30	31				

Undergraduate Programs

MAJORS

TEACHER PREPARATION

Arts

Fine Arts
Home Economics
Dietetics
Industrial Arts

Education

Business Education
(Emphasis in Accounting, Secretarial,
Basic Business and Economics, or
Distributive Education)
Elementary Education
Special Education
(Audiology; Mental Retardation; Speech
Correction or Teaching the Acoustically
Handicapped)

Health, Physical Education and Recreation

Physical Education for Women
Physical Education for Men

Humanities

English
English
(Junior High)
French
German
Spanish
Speech
Drama

Music

Music Education
Music Education
(Five-year program)

Sciences

Biological Science
Chemistry
Physical Science
Mathematics
(Junior High)
Mathematics
(Secondary)
Elementary Science
Physics

Social Sciences

Social Science
History
Social Studies
(Junior High)

LIBERAL ARTS

Arts

Fine Arts
Home and Family Living
Dietetics

Education

Business

Humanities

English
Foreign Languages
Speech
Drama
Music

Nursing

Nursing

Sciences

Biological Science
Chemistry
Physical Science
Mathematics
Physics
Medical Technology

Social Sciences

Social Science
History

Students enrolling at the undergraduate level may elect to work toward a Bachelor of Arts degree in either the teacher education or liberal arts programs.

Please consult the list of Summer classes on page nine for the number of General Education and content courses being offered for undergraduate students.

Baccalaureate Degrees

Eight academic divisions offer a total of 33 majors in the teacher preparation program. Admission to Colorado State College does not guarantee teacher certification. Prior to their junior year, students pursuing a teacher preparation major must apply for admission into the Advanced Teacher Education Program. If admitted, the student enrolls in a block of advanced teacher education courses including basic concepts of education, educational psychology, student teaching and educational philosophy. Successful completion of the program will result in certification of the prospective teacher to teach in Colorado and all other states in the nation.

There are 17 majors offered by six academic divisions in the liberal arts program. The program, in the number and quality of course offerings, is comparable to the program of fine liberal arts colleges in the area.

Two programs—nursing and recreation—are being offered under the Bachelor of Science degree.

Minor Programs

In addition to the programs listed above, the college offers a number of programs as minors (27 quarter hours). Most major programs are also offered as minor programs. Two minor programs, journalism and psychology, are offered as minors only. Please consult the general catalog for specific information.

Summer Quarter Plan

The Summer Quarter plan allows the undergraduate student to attend college on a four-quarter basis. If this plan is followed from the freshman year, the student, through continuous study, may complete his undergraduate requirements for graduation in three years. If academic requirements are met, the student is then eligible to apply for a position and earn an extra year's salary or to work on a master's degree during the fourth year which is normally devoted to undergraduate study.

College Competency Program

Colorado State College believes that any person who demonstrates ability to successfully pursue college study should have the opportunity to enter college. Working on this assumption, CSC is offering its "Summer Program for College Competency" which offers the high school student graduating from the lower third of his class an opportunity to test his ability to do college work.

Students under this program will take at least 12 quarter hours of academic work plus one physical education activity course as an unclassified student. If the student achieves the grade point average required of all regularly admitted freshmen, he will be granted regular college admission for Fall Quarter and will be granted credit for the courses satisfactorily completed during the summer.

Graduate Programs

Through the Graduate Division, Colorado State College offers four advanced degree programs leading to the Master of Arts, (M.A.), Specialist in Education, (Ed.S.), Doctor of Education, (Ed.D.), and Doctor of Philosophy, (Ph.D.). The Specialist degree is offered only in the Division of Education, but is often designed across interdivisional lines to meet individual needs.

Detailed information concerning advanced degrees may be obtained by consulting the 1964-65 General Catalog or by writing to Dr. Sam Gates, Dean of the Graduate Division, CSC.

Master of Arts

The Master of Arts degree may be earned in three consecutive summer quarters of full-time study. Thirty weeks is the minimum residence requirement for the master's degree which is awarded upon completion of 45 quarter hours of credit. Students may choose their field of study from the majors offered by the seven instructional divisions:

Two plans are available: Plan A, with thesis, and Plan B, without thesis.

Specialist in Education

The Specialist in Education degree is a one-year program beyond the Master's degree. This program prepares one to be what the name implies—a specialist—and course work generally cuts across divisional and departmental lines. A student may wish to specialize in areas similar to the following topics: Supervision of Science Instruction, Consultant in School Buildings, Testing in the Elementary School or Guidance in the Elementary School.

Doctor of Education

A two-year program beyond the master's degree, the Doctor of Education degree requires course work and research of a professional nature. The student selects an area of concentration (major) and a supporting area (minor). All candidates are required to spend three consecutive quarters in residence and in full-time study. To be eligible for admission to candidacy for the degree, the student must have earned at least 36 hours of credit with a "B" average or better and completed all examinations, research outlines and other classification work. Concentration or major fields of study may be chosen from: Business Education • Educational Administration • Educational Psychology and Guidance • Elementary Education • English Education • Health and Physical Education • Industrial Arts Education • Mathematics • Music Education • Science Education • Secondary Education • Social Science • Special Education (Speech Pathology or Mental Retardation) • Vocational Rehabilitation.

Students may select any one of the above fields for their minor course of study or one of the following: Audio-Visual Education • Curriculum • Higher Education • Mathematics • History and Philosophy of Education.

Doctor of Philosophy

The Doctor of Philosophy degree is a three year program beyond the baccalaureate. Two specialized programs are available: (1) College Student Personnel Work to prepare candidates for college placement as deans of students and in other related areas; and (2) Educational Measurements and Research designed to prepare candidates for college teaching assignments and/or researchers for curricular areas.

MASTER OF ARTS MAJOR PROGRAMS

Arts

Industrial Arts
Fine Arts
Home Economics

Education

Audio-Visual Education
Business Education
Educational Administration (Elementary, Junior High or Secondary)
Educational Psychology and Guidance
Elementary Education (Content, Developmental Reading, or Remedial Reading)
Junior High School Education
Secondary Education (Curriculum and Supervision or Instruction)
Special Education (Audiology, Speech Correction, Mental Retardation, Physically Handicapped, Visually Handicapped or Acoustically Handicapped)
Vocational Rehabilitation Counseling
Emphasis: Outdoor Education
(Elective Credit and Thesis)

Health, Physical Education and Recreation

Dance Education
Health Education
Physical Education
Recreation
Supervision of Physical Education

Humanities

English
Speech and Drama

Music

Music Education
Supervision of Music

Science

Biological Sciences
Botany
Chemistry
Mathematics
Physical Sciences
Physics
Science Education
Zoology

Social Sciences

History
Social Science
Social Studies Education

Housing

College housing is available in residence halls for single men and women. All accommodations in the residence halls include room and board. The rooms are arranged to accommodate two persons to a room. Married couples without children are housed in residence halls, providing either the husband or wife is a student.

If the applicant desires to cancel his application in the residence halls or College houses for Summer Quarter accommodations and notifies the Director of Student Housing on or before May 15th, \$10.00 of the deposit will be refunded. If the applicant does not attend Colorado State College and cancels after May 15th the College will retain the entire \$25.00 deposit. If a student living in a residence hall or college house should withdraw from the College before the end of the quarter, he forfeits his room deposit of \$25.00, and is charged for the room rent for the balance of the quarter; however, he is allowed a refund on the dining hall charges on a pro-rated basis.

The college does not have low-cost housing for married students with children. Many students find rooms, apartments, and houses in Greeley. Room and apartment rental listings are available to any student who desires to call in person at the Housing Office. Arrangements for accommodations with private landlords cannot be made by the Housing Office by mail, but must be made by the student directly with the landlord. Students and landlords are both advised to have a clear understanding, preferably in writing, as to facilities, prices, and intended length of tenancy.

A limited number of college-owned sorority and fraternity houses are available for single women and married couples without children. Houses accommodating single women have two or more students per room and no food service. Houses for married couples without children provide a room for each couple with community lounge and cooking privileges, but no food service.



Wiebking Hall is one of eight residence halls adjacent to Main Campus.

Board and Room (Residence Halls)*

Men (2 per room)	\$250.00
Women (2 per room)	250.00
(1 per room)	285.00
Married Couples	500.00
Board Only (2 meals per day, excluding breakfast, limited to students not residents in college halls)	145.00

Rooms Only* (2-4 occupants per room in sorority houses)

Single woman	70.00
Married couples (Rates for 2 persons)	140.00

Trailer Parking Space, electricity and water provided, per day

\$.50

* The college will furnish and launder college-owned sheets, pillow cases and blankets.

Housing information for periods less than 10 weeks may be obtained from Mr. Ralph Hargrove, Director of Housing, Colorado State College.

Student Employment

A number of the students of the college have part-time employment on campus to help defray their expenses. Other jobs are available in Greeley business places and homes. Each student employed on the college campus must maintain a satisfactory grade average. Inquiries concerning employment should be addressed to Mr. Harry Collins, Director of Financial Aid, Frasier Hall, Room 7.

Health Services

The Student Health Service in Frasier Hall, Room 18, offers treatment and limited dispensary facilities with registered nurses in attendance at all times during the college day, and with physicians available at specific office hours.

PRINT PLEASE **Colorado State College—1965 Summer Quarter APPLICATION FOR COLLEGE HOUSING**

Name _____
(LAST) (FIRST) (MIDDLE)

Address _____
(STREET) (CITY) (STATE)

Sex _____ Age _____

Please Enclose a \$25 Deposit

College housing desired —
 (All rooms are for two or four persons)

My classification is _____

_____ Residence Hall _____ College House

_____ Fresh.-Soph.

_____ Jr.-Senior

_____ Accommodations desired for man and wife

_____ Graduate

Tuition, Fees

Basic required tuition and fees paid by every student are collected for the number of rated credit hours of the courses for which a student registers. These are applicable to every enrollment: for partial or full study, for Colorado resident status, and for credit or non-credit status.

All charges are due and payable at the time of regular registration or during registration for special classes. No registration is complete until the assessed charges are paid at the Accounting Office. Any registration permitted at a time other than that scheduled as defined by the regulations of this bulletin will carry a late registration fee. Please consult the incidental fees table below.

Fees for added services, individual instruction, special programs and courses carrying laboratory or field trip expenses will be assessed and paid at registration in like manner with basic tuition and fees. For programs leading to the Specialist in Education and Doctoral degrees, the General Catalog itemizes extra charges (including phasing fees) which are assessed to the student. No graduate program phasing fees will be altered or refunded if the student fails to pursue his intent or for any reason drops out of the program for which he has been accepted.

Certain tuition scholarships and waivers are issued to apply in the fall, winter, and spring quarters; others, principally Joint Honor Scholarships and Colorado State College Awards, are now validated as well for use during the summer quarter. Only that portion of the credit hour charge represented by the tuition is waived. Holders of Student Teaching Reciprocity Waivers which are issued for fractional loads, are granted waivers for tuition plus student services fees for the credit hour value only of the STRW presented.

Determination of residence for tuition assessment purposes is made at registration in accordance with C.R.S. 1963, 124-18-1-5, a Colorado Statute governing residence status and applicable to all state institutions of higher education in Colorado.

The Trustees of the State Colleges, the governing body for Colorado State College, reserves the right to alter tuition fees and/or board and room charges on 30 days notice prior to the first day of registration for a summer quarter. Charges for the present summer are based on the 1964-65 General Catalog.

Tuition and Fees:

		Summer 1965, Per Credit Hour of Enrollment
Colorado Resident		
Tuition	\$ 4.50	
Student Service Fee	2.00	\$ 6.50
Non-Colorado Resident		
Tuition	\$10.00	
Student Service Fee	2.00	\$12.00

Complete tuition and student services fee assessments are computed by multiplying the number of course credit hours by \$6.50 for residents and \$12.00 for non-residents.

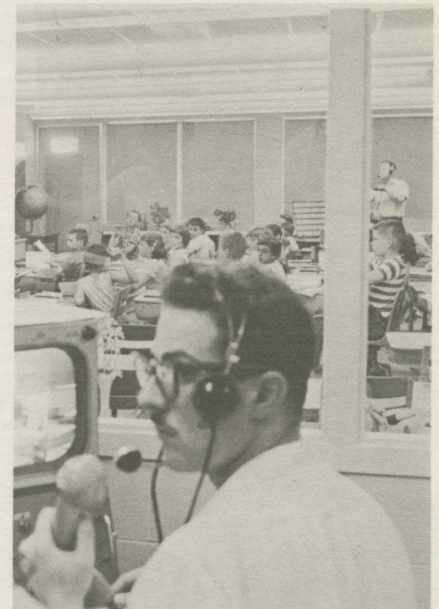
Incidental Fees

Late Registration: Assessed for an enrollment completed on the first day following the scheduled registration day.....	\$5.00
Assessed for each added day, if late registration be permitted, per day.....	2.00
Special Examination: Assessed when permission is granted to take an examination at a time other than regularly scheduled.....	2.00
Late Application for Graduation.....	2.00
Change of Program: Assessed for each separate change of program permitted.....	1.00

See the 1964-65 General Catalog for other fees which may be applicable in the terms of a particular registration.

Refunds Policy

To be eligible for a refund of any kind under college regulations, the student must present a copy of an approved formal withdrawal notice to the Business Office. Forms may be obtained from the Records Office. Partial refunds for full quarter classes are granted only for early withdrawals. No refund will be granted for special short-period classes after the first meeting of the class. Please consult the 1964-65 General Catalog for the specific refund policies of the college.



Special facilities at Colorado State College include modern educational television equipment.

Summer Faculty



Holmes



Decker



Gates



Hartman



Oppelt



Turner



Sanderson



Lakin

Darrell Holmes, Ph.D., President of the College.....	Frasier 203
Donald G. Decker, Ph.D., Sc.D., Dean of the College and Director of Summer School.....	Frasier 203
Sam G. Gates, Ed.D., Dean of the Graduate Division.....	Frasier 207
William F. Hartman, Ed.D., Director of Public Relations.....	Frasier 108
Norman T. Oppelt, Ph.D., Dean of Students.....	Frasier 119
Glen C. Turner, M.B.A., D.P.S., Comptroller.....	Frasier 5
George F. Sanderson, A.M., Registrar.....	Frasier 123
Frank P. Lakin, Ed.D., Administrative Assistant.....	Frasier 201

Hillway, Tyrus, Ph.D.....	Cranford 100
Hogan, Kenneth, Ed.D.....	Kepner 13
Hughes, Herbert H., Ph.D.....	Kepner 113
Kelly, Leo J., Ed.D.....	B. L. 145A
Kopitz, Eugene D., Ph.D.....	Cranford 6
Kramer, Klaas, Ph.D.....	Cranford 106
Lewis, Juanita, Ph.D.....	Cranford 100
Lowery, Betty, Ph.D.....	Cranford F
Luketich, Donald, Ed.D.....	Kepner 16
Lutey, Carol L., Ph.D.....	Cranford 6
McAfee, Daniel, Ph.D.....	B. L. 142A
Meier, John H., M.A.....	Cranford 11
Montgomery, Lola J., Ed.D.....	Cranford 11
Mosbo, Alvin O., Ed.D.....	Cranford 106
Nelson, Theodore M., Ph.D.....	Cranford 103
Ninemires, Howard, M.A.....	Cranford B
Partridge, Arthur, Ed.D.....	Kepner 16
Quinlan, Claire, M.A.....	Cranford 103
Rapp, William, Ed.M.....	B. L. 147
Stoffler, James A., M.A.....	Cranford A
Stuckey, June E., Ph.D.....	Frasier 121
Tanner, Gerald, M.A.....	Frasier 121
Traylor, Helen, Ed.D.....	B. L. 114C
Van Maanen, Everett H., Ed.D.....	Cranford E
Waterman, Roland, Ed.D.....	Cranford 211
Weishahn, Mel, M.A.....	B. L. 130
Whorton, Gladys P., Ph.D.....	B. L. 145B

LABORATORY SCHOOL

Kerns, LeRoy, Ed.D.....	B. L. 112A
Director	
Benson, Charles, M.A.....	B. L. 218A
Bruce, Josephine, M.A.....	B. L. 122A
Brooks, George H., M.Ed.....	B. L. 202A
Brummer, Edith, B.S.....	B. L. 211
Dalbey, Hazel, M.A.....	B. L. 224A
Harkness, Marjorie, Ed.D.....	B. L. 222A
Hunn, Bernice, Ed.D.....	B. L. 126A
Longwell, Robert, M.A.....	B. L. 204A
Mower, Morris, M.S.....	B. L. 220A
Neal, Louise, Ed.D.....	B. L. 113A
Schweers, Rex R., M.A.....	B. L. 203A
Shoemaker, Joseph, Ed.D.....	B. L. 103A
Trigg, Dorris, M.S.....	B. L. 124A

LIBRARY STAFF

Seager, Daniel, M.A.....	Carter 208
Head Librarian	
Bachenburg, Elmer, M.A.....	Carter 211
Brown, Lois, A.M.....	Carter 209
Costello, Virginia, A.M.....	Carter 401
Greer, James, M.A.....	Carter 211
Hall, Josephine, M.A.L.S.....	Carter 307
Koehmstedt, Carol, M.A.....	Carter 401
Kovacs, Gabor, M.A.....	Carter 207
Richardson, Winnifred, M.A.....	Carter 211
Rider, Mary, B.S.L.S.....	Carter 401
Tilden, Vivian, M.A.....	Carter 211

-HEALTH, PHYSICAL EDUCATION AND RECREATION

Butler, L. C., Ed.D.....	Gunter 109A
Division Chairman	
Barham, Jerry N., Ed.D.....	Gunter 103C
Behling, Mary A., M.A.....	Gunter 103A
Benich, Thomas R., M.A.....	Gunter B4
Best, Warren (Bud), M.A.....	Gunter B4
Blasi, Robert L., M.A.....	Gunter B4
Cyphers, Vincent A., Ed.D.....	Gunter 103B
Everett, Margaret E., Ph.D.....	Gunter 109C
Hancock, John, M.A.....	Gunter 106
LaBonde, Jack J., M.A.....	Gunter B4
Latham, Jessie, M.A.....	Gunter 109B
Lindahl, Virgil Y., M.A.....	Gunter 106
Montgomery, Robert, Ed.D.....	Gunter 103B
Rossi, Anthony, M.A.....	Gunter B5
Sage, George, Ed.D.....	Gunter 2
Shirley, Max, Ed.D.....	Gunter 103D
Staton, Wesley, Ed.D.....	Gunter 103C
Steffy, Doris, M.A.....	Gunter 109B
Van Anne, Nancy, Ph.D.....	Gunter 109C

HUMANITIES

Frease, Forrest, Ph.D.....	Carter 402
Division Chairman	
Carriar, Shirley M., Ed.D.....	B. L. 206A
Cleere, Ford, M.A.....	Frasier 108
Crawford, Richard J., M.A.....	Kepner 106
Cross, Neal, Ed.D.....	Carter 402

D'Angelo, Gary D., M.A.....	Kepner 104A
Freeman, Sam F., Ph.D.....	Carter 206
Gates, George G., Ed.D.....	Carter 306
Graham, Robert S., Ph.D.....	Carter 504
Holley, Donald L., Ed.D.....	Kepner 208
Huff, Chester C., Jr., M.A.....	Carter 501
Jamison, Frank R., M.A.....	Carter 205
LaBorne, Paul C., M.A.....	B. L. 201A
Landry, Leonard P., B.A.....	B. L. 204A
Langworthy, Helen P., Ph.D.....	Frasier 70
Norton, Lloyd A., M.A.....	Frasier 70
Princic, Walter, M.A.....	Carter 501
Toussaint, Sylvester, Ph.D.....	Kepner 208
Zimmerman, Donald, M.S.....	Carter 201A

MUSIC

Mohr, E. E., Ed.D.....	Frasier 159
Division Chairman	
Dykins, Dale, M.Mus.....	Frasier 156
Evans, Kenneth, Ph.D.....	Frasier 254
Fluke, John H., Ed.D.....	Frasier 166
Ginsburg, Blanche, B.A.....	Frasier 255
Goodbrod, Rupert M., M.A.....	Frasier 154
Himmel, Joseph, M.Mus.....	Frasier 252
Hutcherson, Rita, Ph.D.....	Frasier 155
James, Robert, M.Mus.....	Frasier 48
King, Ralph R., Ed.D.....	Frasier 49
Menk, Anthony, M.A.....	Frasier 151
Mickens, Howard M., M.Mus.....	Frasier 251
Miller, James E., Ph.D.....	Frasier 53
Nofziger, Dwight E., M.A.....	Frasier 250
Schenkman, Walter A., M.Mus.....	Frasier 152
Schmitz, Claude M., M.A.....	Frasier 150
Skinner, Howard, D.Mus.....	Frasier 253
Smith, Robert, Ed.D.....	Frasier 153
Tipton, Eleanor, Ed.D.....	Frasier 167
Walker, Wayman, E., M.Mus.....	Frasier 50

NURSING

McMinn, Elaine, M.S.....	Cranford 204
Division Chairman	
Carlson, Jean, M.S.....	Cranford 206
Hallan, Mable, M.S.....	Cranford 206
Payton, Reta, M.S.....	Cranford 206

SCIENCE

Glidden, Harley, Ph.D.....	Science 138
Division Chairman	
Aas, Wallace, M.A.....	Science 48
Anders, Frank W., M.A.....	Science 308
Beel, John A., Ph.D.....	Science 134
Fisch, Forest N., M.A.....	Science 323
Fry, Richard K., Ph.D.....	Science 312
Gapter, John K., M.S.....	Science 238
Greer, Janet, M.S.....	Science 309
Hayes, Stuart, B.A.....	Science 44
Heimerl, Bea, Ed.D.....	Science 322
Johnson, Robert L., M.S.....	Science 311
Koch, William G., Ph.D.....	Science 137
Moinat, Arthur D., Ph.D.....	Science 241
Olson, Kenneth V., Ph.D.....	Science 350
Patterson, Dale O., Ph.D.....	Science 314
Popejoy, William D., Ed.D.....	Science 313
Schmidt, Gerald, Ph.D.....	Science 239
Sund, Robert B., Ed.D.....	Science 348
Thomas, Bert O., Ph.D.....	Science 242
Tollefson, Oscar, Ph.D.....	Science 333
Tomasi, Gordon, Ph.D.....	Science 135
Trowbridge, Leslie, Ph.D.....	Science 349
Winchester, A.M., Ph.D.....	Science 240
Woerner, Dale E., Ph.D.....	Science 129
Woods, Ernest J., M.A.....	B. L. 205A

SOCIAL SCIENCE

Reynolds, Arthur, Ph.D.....	Kepner 201A
Division Chairman	
Arnold, Dean A., Ph.D.....	Kepner 202
Boeck, George A., Ph.D.....	Kepner 212
Byerly, Benjamin, M.A.....	Kepner 119A
Christensen, Harold P., Ph.D.....	Kepner 202
Koller, Frank, Ph.D.....	Kepner 220A
Matoren, Stanley, M.S.....	Kepner 122A
Mickey, Barbara, Ph.D.....	Kepner 116
Mickey, John R., B.S.....	Kepner 116
Perchlik, Richard, Ed.D.....	Kepner 211
Pogue, Pauline C., M.A.....	Kepner 212
Quammen, Francis R., M.A.....	Kepner 202
Rothweiler, Robert L., Ph.D.....	Kepner 119A
Trainer, Orvel L., Ph.D.....	Frasier 68
Van Dusen, Peter, M.A.....	Kepner 220A
West, Lee R., M.A.....	Kepner 217A
Willoughby, Gary, M.A.....	Kepner 122A

ARTS

Perry, Kenneth, Ph.D.....	Gugg. 101
Division Chairman	
Ball, Richard, M.A.....	Gugg. 202
Blubaugh, Charles, M.A.....	Gugg. 202
Cadigan, Marianna, M.A.....	Crabbe 308
Erwin, William, Ed.D.....	Arts Annex 200
Funderburk, Clara, M.A.....	Crabbe 208
Gleb, Phillip L., M.A.....	Gugg. 103
Grable, Joyce, B.A.....	Crabbe 208
Hall, Rhoda, M.S.....	B. L. 111A
Jelden, David L., Ed.D.....	Art Annex 300
Johnson, F. Morris, Ed.D.....	Art Annex 100
Kagy, Frederick D., Ed.D.....	Gugg. 103
Leacock, Rose A., M.A.....	Gugg. 102
Lubbers, J. Max, M.A.....	Carter 203
Mariani, John I., M.A.....	Gugg. 101
Olson, David, M.A.....	B. L. 152A
Platter, Allen, Ed.D.....	Gugg. 102
Reitze, Alberta, M.S.....	Carter House
Schumacher, Herbert, M.F.A.....	Gugg. 102
Wolfe, Welby, Ed.D.....	Frasier 69

EDUCATION

Kelly, Edward, Ph.D.....	Cranford 106
Division Chairman	
Ahlberg, Verne, M.A.....	B. L. 145C
Anderson, Darrell, Ph.D.....	B. L. 138B
Barnhart, Alvin E., Ed.D.....	Kepner 16
Blanchard, Howard, Ed.D.....	Cranford 11
Bothell, John, Ed.D.....	Cranford 105
Bourgeault, Stanley, M.A.....	B. L. 130C
Bowman, Harold, Ed.D.....	Carter 205
Chrimer, John M., Ed.D.....	Cranford 107
Claybaugh, Amos L., Ed.D.....	B. L. 118
Clevenger, Susan, Ed.D.....	Cranford 6
Damgaard, John A., Ed.D.....	Cranford 107
Dickerson, Wendell, M.A.....	B. L. 145D
Duling, John, M.A.....	Frasier 115
Elliott, Allan R., Ed.D.....	Kepner 16
Forkner, Irvine, Ph.D.....	Cranford 211
Fulbright, John, Ed.D.....	Cranford 11
Gagon, Glen S., Ed.D.....	Cranford 114
Heimerl, Ramon P., Ph.D.....	Kepner 6B
Henkels, Milo P., M.A.....	B. L. 136
Hillestad, Mildred, Ph.D.....	Cranford 209

Interdivisional--Arts

ARTS

1965 Summer Class Schedule

Course	Section No.	Division, Time and Course Title	Hours Credit	Instructor	Days	Building and Room
Interdivisional Courses						
7:10-8:00 a.m. — Interdivisional						
ID	300- 1	Introduction to Graduate Study (Education)	3	Chaloupka	MWF	Bishop-L 166
ID	300-21	Introduction to Graduate Study	3	Perry	MWF	Gugg. 105
ID	0300- 1	Writing Laboratory for Graduate Students	0		MTWThF	Kepner 101
8:10-9:00 a.m. — Interdivisional						
ID	300- 2	Introduction to Graduate Study (Education)	3	Chaloupka	MWF	Bishop-L 166
ID	300-22	Introduction to Graduate Study	3	Erwin	MWF	Crabbe 302
ID	300-32	Introduction to Graduate Study (Business Education)	3	Hillestad	MWF	Kepner 214
ID	300-42	Introduction to Graduate Study	3	Lindahl	MWF	Gunter 201
ID	300-52	Introduction to Graduate Study	3	Frease	MWF	Kepner 118
ID	300-62	Introduction to Graduate Study	3	Mohr	MWF	Frasier 249
ID	300-72	Introduction to Graduate Study	3	Trowbridge	MWF	Science 35
ID	0300- 2	Writing Laboratory for Graduate Students	0	Zimmerman	MTWThF	Kepner 101
ID	400- 2	Introduction to Doctoral Research	3	Hillway	MWF	Science 303
9:10-10:00 a.m. — Interdivisional						
ID	0300- 3	Writing Laboratory for Graduate Students	0	Huff	MTWThF	Kepner 101
10:10-11:00 a.m. — Interdivisional						
ID	0300- 4	Writing Laboratory for Graduate Students	0		MTWThF	Kepner 101
12:10-1:00 p.m. — Interdivisional						
ID	0300- 6	Writing Laboratory for Graduate Students	0	Princic	MTWThF	Kepner 101
2:10-3:00 p.m. — Interdivisional						
ID	300- 8	Introduction to Graduate Study (Social Science) (2:10-3:30 p.m.)	3	Quammen	MF	Kepner 125

Division of the Arts

Hours Arranged — Arts						
HEC	192-70	Home Management Residence	3		MTWThF	Cottage
HEC	264-70	Workshop in Pre-School (Labs. 6 hrs. arr. between 9:10-11:00 M thru F)	3	Reitze	MTWThF	Carter House
7:10-8:00 a.m. — Arts						
FA	54- 1	Drawing and Painting Techniques (Lab. 3 hrs. arr.)	3	Abbott	MWF	Gugg. 201
FA	127- 1	Craft Techniques (Lab. TTh 7:10-8:00)	3	Ball	MWF	Gugg. 206
FA	317- 1	Ceramics (Lab. 3 hrs. arr.)	3	Schumacher	MWF	Gugg. 2
FA	335- 1	Advanced Life Drawing	2	Mariani	TTh	Gugg. 106
FA	336- 1	Advanced Drawing (Lab. 3 hrs. arr.)	3	Platter	MWF	Gugg. 1
HEC	203- 1	Development and Guidance of the Young Child (Lab. 2 hrs. arr. between 9:10-11, M thru F)	3	Reitze	MW	Crabbe 302
IA	72- 1	Gas and Electric Welding (Lab. 2 hrs., TTh, 10:10-11 or 11:10-12)	2	Olson	TTh	Art Annex 100
IA	232- 1	Improvement of Instruction in the Arts	3	Kagy	MWF	Kepner 120
IA	272- 1	Advanced Gas and Electric Welding (Labs. 3 hrs., MWF 8:10-9, 9:10-10 or 1:10-2)	3	Johnson	MWF	Art Annex 100
IA	290- 1	Power and Transportation (Labs. 3 hrs., MWF 8:10-9 or 1:10-2)	3	Pritchett	MWF	Crabbe 106
IA	362- 1	Problems in Drafting and Planning (Labs. 3 hrs., MWF 10:10-11 or 1:10-2)	3	Gleb	MWF	Art Annex 200
IA	371- 1	Advanced Metal Craft Techniques (Labs. 3 hrs., MWF, 10:10-11 or 1:10-2)	3	Erwin	MWF	Art Annex 300
8:10-9:00 a.m. — Arts						
FA	17- 2	Introduction to Pottery (Lab. arr.)	3	Schumacher	MWF	Gugg. 2
FA	124- 2	Elementary Art (Lab. 5 hrs. arr.)	5	Leacock	MTWThF	Gugg. 100
FA	200- 2	Techniques of Creative Weaving (Lab. 3 hrs. arr.)	3	Ball	MWF	Gugg. 203
FA	202- 2	Advanced Composition (Lab. 3 hrs. arr.)	3	Platter	MWF	Gugg. 201
FA	204- 2	Figure and Composition (Lab. 3 hrs. arr.)	3	Blubaugh	MWF	Gugg. 1
FA	304- 2	Seminar in Art Education	3	Blubaugh	TTh	Gugg. 1
FA	319- 2	Serigraphy	2	Ball	TTh	Gugg. 205
FA	327- 2	Craft Activities for the Elementary School (Lab. 3 hrs. arr.)	3	Abbott	MWF	Gugg. 206
HEC	301- 2	Supervision of Student Teaching in Home Economics (June 21-July 16)	2	Hall	MTWThF	Crabbe 302
IA	50- 2	Bench Woodwork (Labs. 3 hrs., MWF, 10:10-11 or 11:10-12)	3	Olson	MWF	Art Annex 200
IA	218- 2	Design Problems in Synthetic Materials (Labs. 2 hrs., TTh, 7:10-8 or 1:10-2)	2	Lubbers	TTh	Carter 203
IA	219- 2	Advanced Plastics (Labs. 3 hrs., MWF, 7:10-8, 11:10-12 or 1:10-2)	3	Lubbers	MWF	Carter 203
IA	274- 2	Advanced Machine Tool Operation (Labs. 2 hrs., TTh, 7:10-8, 11:10-12 or 1:10-2)	2	Johnson	TTh	Art Annex 100
IA	335- 2	Philosophy of Industrial Arts	3	Perry	MWF	Gugg. 105
IA	380- 2	Electronics (Labs. 5 hrs., MTWThF, 10:10-11 or 1:10-2)	5	Jelden	MTWThF	Art Annex 300



Perry
Chairman



Ball



Blubaugh



Cadigan



Erwin



Funderburk



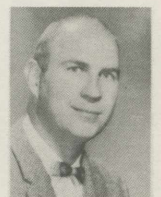
Gleb



Grable



Hall, R.



Jelden



Johnson



Kagy



Leacock

The Arts

1965 Summer Class Schedule



Lubbers



Mariani



Olson



Platter



Reitze



Schumacher



Waters



Wolfe

EDUCATION



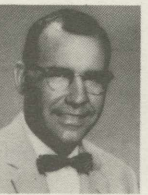
Kelly
Chairman



Ahlberg



Anderson



Barnhart



Blanchard



Bothell

Course	Section No.	Division, Time and Course Title	Hours Credit	Instructor	Days	Building and Room
9:10-10:00 a.m. — Arts						
FA	203-3	Watercolor Painting (Lab. 5 hrs. arr.)	5	Mariani	MTWThF	Gugg. 106
FA	222-3	Art History II	5		MTWThF	Gugg. 201
FA	241-3	Craft Processes in 7th, 8th and 9th Grades (Lab. 4 hrs. arr.)	4	Blubaugh	MTWThF	Gugg. 206
FA	317-3	Ceramics (Lab. 3 hrs. arr.)	3	Schumacher	MWF	Gugg. 2
FA	324-3	Creative Activities in the Elementary School (Lab. 3 hrs. arr.)	3	Leacock	MWF	Gugg. 100
HEC	73-3	Intermediate Clothing Construction (Labs. 4 hrs., TTh, 10:10-12)	4	Cadigan	TTh	Crabbe 301
HEC	387-3	Food Economics	4	Funderburk	MTWTh	Crabbe 206
IA	211-3	Problems in Bindery Organization (Labs. 3 hrs., MWF, 7:10-8, 11:10-12 or 1:10-2)	3	Lubbers	MWF	Carter 203
IA	243-3	Theory and Practice in Offset Lithography (Labs. 3 hrs., MWF, 7:10-8, 8:10-9, or 1:10-2)	3	Kagy	MWF	Kepner 4
IA	274-3	Advanced Machine Tool Operation (Labs. 2 hrs., TTh, 7:10-8, 11:10-12 or 1:00-2)	2	Johnson	TTh	Art Annex 100
IA	281-3	Problems in Teaching General Shop Electricity (Labs. 3 hrs., MWF, 10:10-11 or 1:10-2)	3	Jelden	MWF	Art Annex 300
IA	336-3	Critique for General Shop Organization	3	Pritchett	MWF	Gugg. 105
IA	373-3	Advanced Lapidary and Silvercrafts (Lab. 3 hrs., MWF, 10:10-11 or 1:10-2)	3	Erwin	MWF	Art Annex 200
IA	381-3	Industrial Electronics (Labs. 2 hrs., TTh, 7:10-8 or 10:10-11)	2	Jelden	TTh	Art Annex 300
10:10-11:00 a.m. — Arts						
FA	1-4	Drawing (Labs. TTh, 10:10-11)	3	Mariani	MWF	Gugg. 106
FA	124-4	Elementary Art (Lab. 5 hrs. arr.)	5	Leacock	MTWThF	Gugg. 100
FA	216-4	Creative Jewelry (Lab. 4 hrs. arr.)	4	Ball	MTWTh	Gugg. 205
FA	220-4	Oil Painting (Lab. 5 hrs. arr.)	5		MTWThF	Gugg. 200
FA	301-4	Supervision of Art	5	Platter	MWF	Gugg. 201
HEC	267-4	Advanced Methods in the Teaching of Homemaking	3	Hall	MWF	Crabbe 302
HEC	386-4	Principles and Techniques of Cookery (Labs. 2 hrs., T, 10:10-12)	4	Funderburk	MWTh	Crabbe 206
IA	154-4	Woodfinishing (Labs. 2 hrs., TTh, 8:10-9 or 1:10-2)	2	Gleb	TTh	Crabbe 102
IA	216-4	Design Problems in Leather (Labs. 2 hrs., TTh, 7:10-8 or 1:10-2)	2	Lubbers	TTh	Carter 203
IA	217-4	Advanced Leathercraft (Labs. 3 hrs., MWF, 7:10-8, 11:10-12 or 1:10-2)	3	Lubbers	MWF	Carter 203
IA	220-4	Course Organization in Industrial Arts	3	Pritchett	MWF	Gugg. 105
IA	275-4	Advanced Machine Shop Practice (Labs. 3 hrs., MWF, 8:10-9, 9:10-10 or 1:10-2)	3	Johnson	MWF	Art Annex 100
IA	344-4	Problems of Design in the Graphic Arts (Labs. 3 hrs., MWF, 8:10-9 or 1:10-2)	3	Kagy	MWF	Kepner 4
IA	352-4	Problems in Woodworking (Labs. 3 hrs., MWF, 8:10-9, 9:10-10 or 1:10-2)	3	Gleb	MWF	Crabbe 102
11:10-12:00 Noon — Arts						
FA	212-5	Problems in Design (Lab. 3 hrs. arr.)	3	Blubaugh	MWF	Gugg. 1
FA	217-5	Pottery: Advanced Throwing (Lab. 3 hrs. arr.)	3	Schumacher	MWF	Gugg. 2
FA	232-5	Advanced Scene Design (Admission by permission of Instructor)	3	Wolfe	MWF	Frasier 111
FA	303-5	Advanced Watercolor Painting (Lab. 2 hrs. arr.)	2	Mariani	TTh	Gugg. 106
FA	328-5	Curriculum in Art Education	3	Platter	MWF	Gugg. 201
HEC	275-5	Home Furnishing	3		MWF	Crabbe 305
HEC	304-5	Evaluation in Homemaking Education	4	Hall	MWThF	Crabbe 302
IA	41-5	Graphic Arts Fundamentals (Lab. 3 hrs., MWF, 7:10-8, 8:10-9 or 1:10-2)	3	Brown	MWF	Kepner 4
IA	143-5	News Photography (Labs. 2 hrs., MTWThF, 12:10-1 or 1:10-2)	2	Kagy	TTh	Kepner 6
IA	230-5	History of Industrial Arts	4	Erwin	MTThF	Gugg. 105
IA	256-5	Advanced Upholstery (Labs. 2 hrs., TTh, 8:10-9 or 1:10-2)	2	Gleb	TTh	Crabbe 102
IA	257-5	Construction Problems in Wood (Labs. 3 hrs., MWF, 8:10-9, 9:10-10 or 1:10-2)	3	Gleb	MWF	Crabbe 102
IA	290-5	Power and Transportation (Labs. 3 hrs., MWF, 8:10-9 or 1:10-2)	3	Pritchett	MWF	Crabbe 106
IA	339-5	Evaluation in Industrial Arts (11:10-12:30)	3	Jelden	TTh	Crabbe 305
IA	375-5	Problems of the Metal Shop (Labs. 3 hrs., MWF, 8:10-9, 9:10-10 or 1:10-2)	3	Johnson	MWF	Art Annex 100
1:10-2:00 p.m. — Arts						
FA	320-7	Advanced Oil Painting (Labs. Arr.)	2		TTh	Gugg. 200
HEC	244-7	Personal Improvement for the Teacher (June 21-July 9) (1:10-3:00 p.m.)	3	Grable	MTWThF	Crabbe 305
HEC	274-7	Equipment Selection and Maintenance (July 19-July 30) (1:10-5:00)	4	Funderburk	MTWThF	Crabbe 206
HEC	376-7	Problems in Clothing Construction (June 21-July 9) (MW, 1:10-4:00, F 1:10-3:00)	3		MWF	Crabbe 301
HEC	396-7	Dress Design in Draping (Labs. 4 hrs., TTh, 2:10-4:00)	4		TTh	Crabbe 301
IA	240-7	Graphic Arts Design and Layout (July 12-23) (1:10-4:00)	3	Brown	MTWThF	Kepner 4
IA	254-7	Seminar in Elementary School Industrial Arts (June 28-July 9) (1:10-4:00)	3	Olson	MTWThF	Bishop-L 157
IA	254-27	Seminar in Elementary School Industrial Arts (July 26-August 6) (1:10-4:00)	3	Olson	MTWThF	Bishop-L 157

Arts--Education

1965 Summer Class Schedule

Course	Section No.	Division, Time and Course Title	Hours Credit	Instructor	Days	Building and Room
2:10-4:00 p.m. — Arts						
FA	228- 8	Seminar in Secondary Art (June 21-July 2) (2:10-4:00)	2	Abbott	MTWThF	Gugg. 1
FA	230- 8	Seminar in Elementary Art (July 19-July 30)	2	Abbott	MTWThF	Gugg. 1
FA	230-28	Seminar in Elementary Art (August 2-August 13) (2:10-4:00)	2	Abbott	MTWThF	Gugg. 1

Division of Education

Hours Arranged — Education						
	139-70	Introduction to Student Teaching in the Elementary School (ATE) (Four hours per week between 9-12 arranged with instructor) (Instructor determined by grade level of assignment)	2	Lab School Staff Arr.		Bishop-Lehr
SPED	201-16	Workshop in Special Education (2 hrs. of Lab. arr. each day) (Taken in conjunction SPED 211) (Some low rate housing available at the Home. Write Dr. Vaughan for additional information.) (Class meets from 10:30-12, June 28-July 23)	5	Pasch	MTWThF	State Home & Training School Wheat Ridge, Colo.
SPED	211-17	Education of Severely Mentally Retarded Children (2 hrs. lab. each day arr.) (To be taken in conjunction with SPED 201.) (Some low rate housing available at the Home. Write Dr. Vaughan for additional information. (Class meets from 8:45-10:15) (June 28-July 23)	3	Pasch	MTWThF	State Home & Training School Wheat Ridge, Colo.
SPED	372-74	Seminar in Audiological Problems	3		Arr. Arr.	Kepner 118
SPED	394-75	Supervised Clinical Practice in Rehabilitation Counseling	16	McAlees		Kepner 6

7:10-8:00 a.m. — Education

	101- 1	Basic Concepts of Education (ATE)	5	Ninemires	MTWThF	Frasier 148
	109- 1	Teaching Handwriting and Spelling in the Elementary School (ATE)	2	Trigg	TTh	Kepner 119
	113- 1	Improvement of Instruction in Social Studies in the Elementary School (ATE)	3	Harkness	MWF	Kepner 218
	206- 1	Audio-Visual Materials in Education (Class also meets on T & Th at 8:10 in Kepner Auditorium.) (Lab. 1 hr. arr.)	4		MW	Carter 202
	222- 1	Reading in the Primary Grades (ATE)	3	Hunn	MWF	Kepner 214
	295- 1	Philosophy of Education (ATE)	3	Williams, L.	MWF	Frasier Theatre
	302- 1	Seminar in Evaluating and Improving Jr. High School Instructional Program	3	Stoffler	MWF	Kepner 204
	311- 1	Supervision of Instruction in English in the Elementary School (Graduates only)	3	Mosbo	MWF	Frasier 205
	314- 1	The Elementary School Curriculum (Graduates only)	3	Heddens	MWF	Science 34
	325- 1	Supervised Practice in Remedial Reading (Clinic Teaching and Conferences: 4 hrs. req., arr.) (Registration by permission of instructor)	3		T	Frasier 205
	332- 1	Problems in Curriculum Development	3	Dunwell	MWF	Crabbe 306
	343- 1	School Finance (Prerequisite, ED 342 or permission of instructor)	3	Barnhart	MWF	Kepner 119
	380- 1	Philosophy and Principles of Outdoor Education	3	Cyphers	MWF	Kepner 205
	395- 1	Philosophy of Education (Graduates only)	3	Bothell	MWF	Frasier 105
BUS	171- 1	Principles of Retailing	3		MWF	Kepner 118
BUS	252- 1	Office Management	3	Forkner	MWF	Frasier 249
BUS	287- 1	Business Data Processing	3	Damgaard	MWF	Science C331
BUS	333- 1	Applied Business Law	5	Dooley	MTWThF	Kepner 216
BUED	356- 1	Improvement of Instruction in Shorthand	2	Hillestad	TTh	Cranford 213
CSPW	453- 1	Research and Evaluation in College Student Personnel Work (7:10-8:30)	3	Quinlan	TTh	Kepner 122
EPG	170- 1	Introduction to Measurement and Evaluation (7:10-8:30)	3	Traylor	TTh	Kepner 209
EPG	315- 1	Counseling Theory and Techniques	3	Traylor	MWF	Kepner 123
EPG	317- 1	Foundations of Guidance	3	Blanchard	MWF	Science L104
EPG	340- 1	Theories of Learning	5		MTWThF	Crabbe 305
EPG	370- 1	Principles and Practices in Testing Measurement	3	Clevenger	MWF	Kepner 108
EPG	388- 1	Abnormal Psychology	3	Anderson	MWF	Science C301
LS	284- 1	The Librarian and Reading Guidance for Youth	5	Hill	MTWThF	Carter 201
SPED	200- 1	The Education of Exceptional Children	3		MWF	Bishop-L 202
SPED	210- 1	Introduction to Mental Retardation (Class meets from 7:10-9:00 a.m.)	4	Rapp	TTh	Bishop-L 203
SPED	211- 1	Education of Severely Mentally Retarded Children	3		MWF	Kepner 6
SPED	243- 1	Beginning Braille	3	Weishahn	MWF	Bishop-L 130
SPED	250- 1	Pathology and Introduction to Education of the Deaf	3	Henkels	MWF	Bishop-L 203
SPED	343- 1	Advanced Braille (Admission by permission of instructor)	3		MWF	Bishop-L 135
SPED	345- 1	Principles of Orientation and Mobility for the Blind (Admission by permission of instructor) (Meets 2 days plus lab.)	3	Bourgeault	TTh	Crabbe 306

8:10-9:00 a.m. — Education

	101- 2	Basic Concepts of Education (ATE)	5	Ninemires	MTWThF	Frasier 148
	206- 2	Audio-Visual Materials in Education (Class also meets on TTh at 8:10 in Kepner Auditorium) (One hour lab. arr.)	4	Bowman	MW	Carter 202



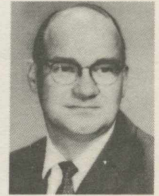
Bourgeault



Bowman



Chrisher



Claybaugh



Clevenger



Damgaard



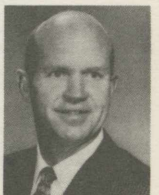
Dickerson



Duling



Elliott



Forkner



Fulbright



Gagon



Heimerl, R.



Henkels

Education

1965 Summer Class Schedule

Course	Section No.	Division, Time and Course Title	Hours Credit	Instructor	Days	Building and Room
8:10-9:00 a.m. — Education (Cont.)						
	311- 2	Supervision of Instruction in English in the Elementary School (Graduates only)	3	Mosbo	MWF	Cranford 9
	320- 2	Seminar in Elementary School Reading (Prerequisite ED 110, 310, or permission of Instructor)	3		MWF	Frasier 205
	324- 2	Remedial Reading in the Elementary School (Theory)	2		TTh	Kepner 105
	351- 2	Supervision of Student Teachers (Open only to CSC past and potential cooperating teachers)	3	Van Maanen	MWF	Crabbe 306
	443- 2	Seminar in Administration (8:10-9:30) (Required of doctoral students in administrations; open to other doctoral students by arr.)	3	Partridge-Elliott	TTh	Kepner 123
BUS	76- 2	Display (8:10-10:00 a.m.)	2		TTh	Kepner 119
BUED	357- 2	Improvement of Instruction in Typewriting	2	Hillestad	TTh	Cranford 213
BUED	373- 2	Current Problems in Business Education	3	Forkner	MWF	Kepner 123
CSPW	351- 2	Student Personnel Work in College and Universities	3	Oppelt	MWF	Crabbe 306
CSPW	352- 2	Student Housing (8:30-10:00)	3	Stuckey	TTh	Crabbe 306
EPG	280- 2	Personality Development	3		MWF	Kepner 103
EPG	340- 2	Theories of Learning	5	Copple	MTWThF	Crabbe 305
LS	283- 2	Book Selection for School Libraries	5	Hill	MTWThF	Carter 201
SPED	230- 2	Care and Pathology of the Physically Handicapped	3	Kelly, L.	MWF	Bishop-L 203
SPED	244- 2	Elementary Methods for the Blind	3		MWF	Bishop-L 205
SPED	270- 2	Audiology	3		MWF	Bishop-L 202
SPED	301- 2	Administration and Supervision of Special Education	3		MWF	Bishop-L 132
SPED	390- 2	Introduction to Rehabilitation	3	McAlees	MWF	Bishop-L 206
SPED	401- 2	Research Seminar in Special Education	3	Dickerson	MWF	Bishop-L 204
9:10-10:00 a.m. — Education						
	115- 3	Literature in the Elementary School (ATE)	2	Lewis	TTh	Kepner 217
	227- 3	Kindergarten Education (ATE)	3	Lewis	MWF	Frasier 101
	249- 3	Principles of Vocational Education	3	Hall	MWF	Crabbe 302
	296- 3	History of Education in the United States	3	Bothell	MWF	Kepner 205
	309- 3	Supervision of Handwriting and Spelling in the Elementary School (Graduates only)	2	Heddens	TTh	Kepner 108
	323- 3	Seminar in Elementary School Social Studies (Prerequisite ED 113, 313, or permission of instructor)	3	Kelly, E.	MWF	Frasier 249
	330- 3	Foundations of Curriculum Development	3	Dunwell	MWF	Carter 202
	341- 3	Philosophy and Techniques of Public Relations	3	Hartman	MWF	Frasier 205
	344- 3	School Plant Planning (Prerequisite, ED 342 or permission of instructor)	3	Luketich	MWF	Kepner 119
	369- 3	Experimentation in Education	3	Morrison	MWF	Kepner 121
BUS	391- 3	Higher Education in the United States	3	Hillway	MWF	Crabbe 306
BUS	253- 3	Personnel Management	3	Damgaard	MWF	Kepner 218
BUED	257- 3	Principles of Insurance	3	Heimerl	MWF	Kepner 216
BUED	353- 3	Improvement of Instruction in Bookkeeping	2	Waterman	TTh	Kepner 205
BUED	401- 3	Analysis of Research in Business Education	5	Hillestad	MTWThF	Kepner 120
CSPW	252- 3	Workshop for Residence Hall Directors and Housemothers (9:10-4:00) (June 21-25)	2	Stuckey-Tanner	MTWThF	Faculty Lounge
EPG	314- 3	Techniques in Group Guidance	3	Montgomery, L.	MWF	Kepner 123
EPG	315- 3	Counseling Theory and Techniques	3	Copple	MWF	Crabbe 305
EPG	380- 3	Theories of Personality	3		MWF	Kepner 125
EPG	383- 3	Projective Techniques (Permission of Instructor)	3	Anderson	MWF	Science C329
LS	280- 3	Organization and Administration of a School Library	5	Hill	MTWThF	Carter 201
SPED	200- 3	The Education of Exceptional Children	3		MWF	Bishop-L 202
SPED	212- 3	Curriculum Development and Methodology for Mentally Retarded	4	Kelly, L.	MTWF	Bishop-L 203
SPED	251- 3	Speech Development for Acoustically Handicapped Children (Class meets from 9:10-11:00 a.m.)	6	Henkels	MWF	Bishop-L 205
SPED	363- 3	The Theory and Treatment of Stuttering	3	Ahlberg	MWF	Bishop-L 204
10:10-11:00 a.m. — Education						
	207- 4	Audio-Visual Administration Workshop	3	Bowman	MWF	Carter 202
	208- 4	Local Production of Audio-Visual Instructional Materials (10:10-11:30)	3	Bowman	TTh	Carter 202
	310- 4	Supervision of Instruction in Reading in the Elementary School (Graduates only)	3	Claybaugh	MWF	Kepner 214
	312- 4	Supervision of Instruction in Arithmetic in the Elementary School (Graduates only)	3	Kramer	MWF	Science L104
	314- 4	The Elementary School Curriculum (Graduates only)	3	Heddens	MWF	Science L105
	315- 4	Supervision of Instruction in Children's Literature	2	Lewis	TTh	Kepner 123
	321- 4	Seminar in Elementary School English (Prerequisite ED 111, 311, or permission of instructor)	3	Mosbo	MWF	Kepner 205
	351- 4	Supervision of Student Teachers	3	Van Maanen	MWF	Science C-111
	355- 4	Administration and Supervision in the Elementary School	4	Hogan	MTWTh	Kepner 108
	365- 4	Secondary School Organization, Administration and Supervision (1 hr. arr.—7 one hr. sectional meetings per week) (10:10-11:30)	4	Elliott-Stoffler	TTh	Frasier 205
	461- 4	Philosophical Foundations of Education	3	Bothell	MWF	Frasier 249
	462- 4	Psychological Foundations of Education	3	Lutley	MWF	Frasier 205
	463- 4	Sociological Foundations of Education	3	Zeleny	MWF	Kepner 216
BUED	262- 4	Distributive Education Programs	5	Chrismar	MTWThF	Crabbe 305



Hillestad



Hillway



Hogan



Hughes



Kelly



Koplitz



Kramer



Lewis



Luketich



Lutey



McAlees



Montgomery, L.



Mosbo



Nelson

Education

1965 Summer Class Schedule



Ninemires



Partridge



Quinlan



Rapp



Stoffler



Stuckey



Tanner



Traylor



Van Maanen



Waterman



Weishahn



Whorton

LIBRARY STAFF



Seager
Head Librarian



Bachenburg

Course	Section No.	Division, Time and Course Title	Hours Credit	Instructor	Days	Building and Room
10:10-11:00 a.m. — Education						
BUED	372- 4	Curriculum Construction in Business Education	5	Heimerl	MTWThF	Kepner 110
CSPW	353- 4	Counseling Services in Colleges and Universities	3	Nelson	MWF	Kepner 123
CSPW	358- 4	Internship in College Personnel Work (Permission of instructor only) (10:10-12:00)	2	Stuckey-Quinlan	T	Kepner 205
EPG	285- 4	Mental Hygiene and Emotional Adjustment	3	Montgomery, L.	MWF	Kepner 125
EPG	311- 4	Organization and Administration of Guidance Services	3	Blanchard	MWF	Frasier 148
EPG	370- 4	Principles and Practices in Testing Measurement	3	Clevenger	MWF	Kepner 105
EPG	374- 4	Supervised Practice in the Use of Individual Tests of Intelligence (10:10-12:00)	4	Lutey	TTh	Kepner 125
LS	282- 4	Reference Materials for School Libraries	5	Richardson	MTWThF	Carter 201
SPED	210- 4	Introduction to Mental Retardation (10:10-12:00)	4	Rapp	TTh	Bishop-L 203
SPED	242- 4	Principles of Education of Partially Seeing	3	Bourgeault	MWF	Kepner 120
SPED	245- 4	Secondary Methods for the Blind (Admission by permission of instructor)	3		MWF	Kepner 121
SPED	264- 4	Speech Correction in the Classroom	3	Ahlberg	MWF	Science 329
SPED	273- 4	The Hearing Mechanism	3		MWF	Crabbe 306
SPED	280- 4	Education of Children with Special Abilities	3		MWF	Bishop-L 202
SPED	302- 4	Appraisal of Exceptional Children	4	Dickerson	MTWF	Bishop-L 204
SPED	395- 4	Seminar in Rehabilitation: Specific Disability Areas (Meets from 10:10-11:30 a.m.)	3		TTh	Kepner 120
11:10-12 noon — Education						
	112- 5	Improvement of Instruction in Arithmetic in the Elementary School (ATE)	3	Heddens	MWF	Science L107
	223- 5	Reading in the Intermediate Grades (ATE)	3	Lowry	MWF	Frasier 249
	295- 5	Philosophy of Education (ATE)	3	Williams, L.	MWF	Kepner 214
	319- 5	Curriculum in the Junior High School	3	Stoffler	MWF	Kepner 119
	322- 5	Seminar in Elementary School Arithmetic (Prerequisite ED 112, 312, or permission of instructor.)	3	Kramer	MWF	Science L105
	331- 5	Advanced Curriculum Construction	3	Dunwell	MWF	Carter 202
	348- 5	School Law	3	Partridge	MWF	Kepner 108
	492- 5	The College Teacher	3	Hillway	MWF	Crabbe 306
BUS	379- 5	Marketing Research	3		MWF	Kepner 120
BUED	403- 5	Post High School Business Education	3	Forkner	MWF	Kepner 110
EPG	140- 5	Educational Psychology	5	Fulbright	MTWThF	Frasier 148
EPG	347- 5	Learning Problems: Diagnosis and Remediation	3	Copple	MWF	Kepner 123
EPG	373- 5	Individual Tests of Intelligence (Permission of instructor req.)	3	Lutey	MWF	Kepner 125
EPG	384- 5	Group Dynamics in Human Relations	3	Traylor	MWF	Frasier 205
LS	281- 5	Classification and Cataloging	5	Richardson	MTWThF	Carter 201
SPED	231- 5	Problems of Teaching the Physically Handicapped	3		MWF	Kepner 210
SPED	260- 5	Speech Pathology	3	Ahlberg	MWF	Bishop-L 206
SPED	311- 5	Workshop for the Vocational Rehabilitation of Mentally Retarded Youth	3		MWF	Kepner 118
SPED	350- 5	Advanced Problems in Teaching Deaf Children	3	Whorton	MWF	Bishop-L 205
SPED	371- 5	Clinical Study in Communication Problems	3		MWF	Bishop-L 140
SPED	411- 5	Medical and Psychological Aspects of Mental Retardation	4	Dickerson	MTWF	Bishop-L 204
12:10-1:00 p.m. — Education						
	310- 6	Supervision of Instruction in Reading in the Elementary School (Graduates only)	3	Claybaugh	MWF	Frasier 249
	316- 6	Secondary Education	3	Dunwell	MWF	Kepner 216
	342- 6	School Administration — Federal, State, Local (Required for all first quarter M.A. candidates in school administration (1 hr. arr. — 6 one hr. sectional meetings per week)	3	Barnhart	MWF	Kepner 214
	342-26	School Administration — Federal, State, Local (Experience or background in education required)	3	Luketich	MWF	Kepner 214
	398- 6	Current Educational Trends and Issues	3	Morrison	MWF	Kepner 219
BUS	115- 6	Business Correspondence	3	Forkner	MWF	Cranford 213
BUS	285- 6	Systems and Procedures	3	Damgaard	MWF	Kepner 119
BUS	341- 6	Foundations of Business	3	Heimerl	MWF	Kepner 218
BUED	355- 6	Improvement of Instruction in Distributive Education	3	Chrismer	MWF	Kepner 121
BUED	370- 6	Administration and Supervision of Business Education	3	Waterman	MWF	Kepner 125
BUED	374- 6	Cooperative Programs in Business Education	2	Chrismer	TTh	Kepner 121
EPG	101- 6	Guidance in the Classroom	3	Fulbright	MWF	Kepner 6
EPG	275- 6	Experimentation in Psychology	3	Hughes	MWF	Kepner 123
EPG	317- 6	Foundations of Guidance	3	Blanchard	MWF	Kepner 125
EPG	370- 6	Principles and Practices in Testing Measurement	3	Clevenger	MWF	Kepner 206
EPG	371- 6	Aptitude and Achievement Analysis	5	Koplitz	MTWThF	Kepner 217
SPED	253- 6	Methods of Teaching Content Subjects to the Deaf	3	Henkels	MWF	Bishop-L 203
SPED	396- 6	Seminar in Rehabilitation: Professional Problems	3		MWF	Bishop-L 202
1:10-2:00 p.m. — Education						
	110- 7	Improvement of Instruction in Reading in the Elementary School (ATE)	3	Mower	MWF	Kepner 101
	200- 7	Education Workshop: Elementary School Modern Mathematics (1:10-4:00) (June 21-July 2)	3	Kramer	MTWThF	Kepner 214
	200-27	Education Workshop: Elementary School Reading (1:10-4:00) (Class will also meet on Saturday, July 10 from 9:00-12:00) (Dr. Paul McKee will be guest lecturer for this course.) (July 6-July 16)	3	Lewis McKee	MTWThF	Kepner 214

Education

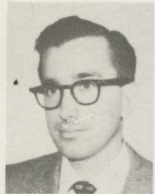
1965 Summer Class Schedule



Brown



Costello



Greer



Hall, J.



Koehmstedt



Kovacs



Richardson



Rider



Tilden

LABORATORY SCHOOL



Kerns
Director



Benson



Brooks



Bruce

Course	Section No.	Division, Time and Course Title	Hours Credit	Instructor	Days	Building and Room
1:10-2:00 p.m. — Education						
200-37		Education Workshop: Outdoor Education (1:10-4:00) (June 21-July 2)	3	Cyphers-Ninemires	MTWThF	Gunter 201
200-47		Education Workshop: Library Science (1:10-4:00) (June 21-July 2)	3	Maddox	MTWThF	Carter 201
200-57		Education Workshop: Public Relations (1:30-4:30) (See page 6 for details) (July 19-23)	2	Hartman-Partridge-Cleere	MTWThF	Greeley West High School
206-7		Audio-Visual Materials in Education (Class also meets on T & Th at 8:10 in Kepner Auditorium) (Lab. 1 hr. arr.)	4		MW	Carter 202
308-7		Production of Photographic Teaching Materials (1:10-3:00) (Lab. 1 hr. arr.)	3		TTh	Carter 202
312-7		Supervision of Instruction in Arithmetic in the Elementary School (Graduates only)	3	Heddens	MWF	Science L107
313-7		Supervision of Instruction in Social Studies in the Elementary School (Graduates only)	3	Lowry	MWF	Frasier 249
420-7		Seminar in Research (1:10-3:00)	0	Hughes	MT	Kepner 205
443-7		Seminar in Administration (2nd quarter) (1:10-4:00) (Required of doctoral students in administration; open to other doctoral students by arr.)	3	Partridge	M	Kepner 108
443-27		Seminar in Administration (3rd quarter) (1:10-4:00) (Req. of doctoral students in administration; open to other doctoral students by arr.)	3	Barnhart	T	Kepner 108
444-7		Advanced Seminar in Administration (4th quarter) (1:10-4:00) (permission of instructor req.)	3	Luketich	M	Kepner 120
444-27		Advanced Seminar in Administration (1:10-4:00) (Permission of instructor req.)	3	Elliott	T	Kepner 120
BUS	320-7	Management Accounting	5	Waterman	MTWThF	Kepner 219
CSPW	354-7	Admissions and Records (1:10-4:00) (June 28-July 9)	3	Lakin	MTWThF	Kepner 121
EPG	20-7	General Psychology and Personal Adjustment	3	Nelson	MWF	Frasier 205
EPG	20-27	General Psychology and Personal Adjustment	3	Duling	MWF	Kepner 221
EPG	214-7	Guidance Workshop (1:10-4:00 p.m.) (June 21-July 2)	3	Clevenger	MTWThF	Kepner 218
EPG	415-7	Supervised Practice in Counseling (Permission of instructor req.)	3		MWF	Kepner 110
EPG	415-27	Supervised Practice in Counseling (Permission of instructor req.)	3	Blanchard	MWF	Cranford 9
EPG	415-37	Supervised Practice in Counseling (Permission of instructor req.)	3	Koplitz	MWF	Cranford 202
EPG	415-47	Supervised Practice in Counseling (Permission of instructor req.)	3	Traylor	MWF	Kepner 6
EPG	415-57	Supervised Practice in Counseling (Permission of instructor req.)	3	Copple	MWF	Kepner 217
EPG	415-67	Supervised Practice in Counseling (Permission of instructor req.)	3	Montgomery, L.	MWF	Cranford 207
EPG	416-7	Play Therapy	3	Anderson	MWF	Crabbe 302
SPED	202-7	Counseling Parents of Exceptional Children	3		MWF	Bishop-L 203
SPED	241-7	Survey of Education of Visually Handicapped (Permission of instructor req.) (1:10-4:00) (July 19-July 30)	3	Bourgeault	MTWThF	Bishop-L 132
SPED	262-7	Clinical Practice in Speech Correction	2		Arr.	Bishop-L 140
SPED	265-7	The Auditory and Speech Mechanism	3	Ahlberg	MWF	Bishop-L 205
SPED	303-7	Practicum in Appraising Exceptional Children	3	Dickersson	MWF	Bishop-L 204
SPED	403-7	Trends in Special Education	3	Kelly, L.	MWF	Crabbe 306
2:10-3:00 p.m. — Education						
111-8		Improvement of Instruction in English in the Elementary School (ATE)	3	Benson	MWF	Kepner 206
200-8		Education Workshop: Vocational Education (2:10-5:00) (June 21-July 2)	3	Chrismer	MTWThF	Kepner 123
313-8		Supervision of Instruction in Social Studies in the Elementary School (Graduates only)	3	Lowry	MWF	Frasier 249
367-8		Reconstructing Secondary Education	3	Morrison	MWF	Kepner 103
BUS	158-8	Advertising	3		MWF	Kepner 118
BUED	280-8	Workshop in Business Education: Developing Economic Understandings (2:10-4:00) (June 16-July 2)	3	Trainer	MTWThF	Kepner 217
BUED	280-28	Workshop in Business Education: Machine Shorthand (2:10-5:00) (July 19-August 6) (\$10 fee will be charged)	3		MTWThF	Cranford 213
EPG	21-8	General Psychology and Human Performance (Prerequisite EPG 20)	3	Tanner	MWF	Kepner 219
EPG	184-8	Industrial Psychology	3	Fulbright	MWF	Kepner 6
EPG	332-8	Psychology of Adolescence	3	Montgomery, L.	MWF	Kepner 122
SPED	274-8	Practicum in Audiology	3		Arr.	Bishop-L 138
SPED	314-8	Practicum with the Mentally Retarded (Registration by permission of major professor only)	6	Zeitlow	MTWThF	Bishop-L 133
SPED	314-28	Practicum With the Mentally Retarded (Registration by permission of major professor only)	6	Tawney	MTWThF	Bishop-L 137
SPED	314-38	Practicum With the Mentally Retarded (Registration by permission of major professor only)	6	Cassidy	MTWThF	Bishop-L 135
SPED	314-48	Practicum With the Mentally Retarded (Registration by permission of major professor only)	6	Schimke	MTWThF	Bishop-L 141
SPED	344-8	Practicum With Visually Handicapped (Admission by permission of instructor)	6	Weishahn	MTWThF	Bishop-L 130

Education-- HPER

1965 Summer Class Schedule

Course	Section No.	Division, Time and Course Title	Hours Credit	Instructor	Days	Building and Room
3:10-4:00 p.m. — Education						
BUS	72- 9	Salesmanship	3		MWF	Kepner 101
EPG	230- 9	Psychology of Childhood and Adolescence	3	Fulbright	MWF	Kepner 122
EPG	313- 9	Occupational Information and Analysis in Vocational Guidance	3	Koplitiz	MWF	Frasier 205
4:10-5:30 p.m. — Education						
BUS	286-10	Electronic Data Processing (4:10-5:30)	3	Damgaard	TTh	Kepner 101
7:00-10:00 p.m. — Education						
SPED	240-13	Structure and Function of the Eye (Admission by permission of instructor)	3	Bourgeault-Droegemueller	T	Carter 201

Division of Health, Physical Education and Recreation

7:10-8:00 a.m. — HPER						
16-	1	Beginning Golf (7:00-9:00) (Fee req.)	1	Benich	T	Men's Gym—Golf Course
16-	11	Beginning Golf (7:00-9:00) (Fee req.)	1	Benich	W	Men's Gym—Golf Course
61-	1	Personal and Community Health	3	Sage	MWF	Gunter 203
62-	1	First Aid	2	Sage	TTh	Gunter 203
252-	1	Internship in Recreation	15	Staff	MTWThF	Gunter 103
271-	1	Safety Education	3	Lindahl	MWF	Gunter 201
280-	1	Care of Sports Injuries	3	Rossi	MWF	Gunter 205
375-	1	Areas and Facilities in Physical Education and Recreation	4	Shirley	MTWF	Gunter Hallway
8:10-9:00 a.m. — HPER						
12-	2	Tennis (Men & Women)	1	Heiss	MWF	Courts
20-	2	Beginning Bowling (Men & Women) (Fee req.)	1	Rossi	TTh	Columbine
61-	2	Personal and Community Health	3	Rossi	MWF	Gunter 203
62-	2	First Aid	2	Sage	TTh	Gunter 203
88-	2	Physical Education Activities for the Elementary School	2	Stefy	MTWThF	Men's Gym
101-	2	Health Education in the Elementary School	2	Latham	TTh	Gunter 201
272-	2	Recreation Leadership	3	Shirley	MWF	Kepner 11
325-	2	Physiology of Exercise	4	Barham	MTThF	Gunter 205
376-	2	Seminar in Contemporary Problems of Recreation	4		MTThF	Gunter 107
9:10-10:00 a.m. — HPER						
12-	3	Tennis (Men & Women)	1	Heiss	MWF	Courts
20-	3	Beginning Bowling (Men & Women) (Fee req.)	1	Benich	TTh	Columbine
25-	3	Beginning Swimming (Men & Women)	1	Best	MWF	Pool
34-	3	Folk Dancing	1	Bodman	MWF	Kepner 11
88-	3	Physical Education Activities for the Elementary School	2	Stefy	MTWThF	Gunter 107
101-	3	Health Education in the Elementary School	2	Behling	TTh	Kepner 125
102-	3	Health Education in the Secondary School	4	Staton	MTThF	Gunter 201
247-	3	Advanced Techniques in Teaching Team Sports (Women)	4	Everett	MTWThF	Men's Gym
274-	3	Methods and Materials in Driver Education	3	LaBonde	MWF	Gunter 205
344-	3	Supervision of Physical Education and Recreation	4	Montgomery	MTThF	Kepner 110
405-	3	Human Growth and Development	4	Barham	MTThF	Gunter 203
10:10-11:00 a.m. — HPER						
12-	4	Tennis (Men & Women)	1	Lindahl	MWF	Courts
20-	4	Beginning Bowling (Men & Women) (Fee req.)	1	Benich	TTh	Columbine
26-	4	Intermediate Swimming (Men & Women)	1	Best	MWF	Pool
62-	4	First Aid	2	Best	TTh	Gunter 205
88-	4	Physical Education Activities for the Elementary School	2	Behling	MTWThF	Men's Gym
101-	4	Health Education in the Elementary School	2	Rossi	TTh	Gunter 201
201-	4	Problems in School Health Programs	4	Latham	MTThF	Science 301
226-	4	Tests and Measurements in Physical Education	3	Cyphers	MWF	Gunter 201
232-	4	Adapted Physical Education	3	Van Anne	MWF	Gunter 205
270-	4	Administration of Athletics	3	Hancock	MWF	Gunter Hallway
304-	4	School Health Administration	4	Staton	MTThF	Gunter 203
11:10-12 noon — HPER						
12-	5	Tennis (Men & Women)	1	Heiss	MWF	Courts
25-	5	Beginning Swimming (Men & Women)	1	Best	MWF	Pool
62-	5	First Aid	2	Best	TTh	Gunter 201
63-	5	Advanced First Aid (June 14-July 16)	1	Rossi	TTh	Gunter 205
64-	5	Instructor's Course in First Aid (July 19-Aug. 21)	1	Rossi	TTh	Gunter 205
226-	5	Tests and Measurements in Physical Education	3	Lindahl	MWF	Gunter 205



Brummer



Dalbey



Harkness



Hunn



Longwell



Mower



Neal



Schweers



Shoemaker



Trigg

HEALTH AND PHYSICAL EDUCATION



Butler
Chairman



Barham



Behling



Benich

HPER -- Humanities

1965 Summer Class Schedule

Course	Section No.	Division, Time and Course Title	Hours Credit	Instructor	Days	Building and Room
11:10-12 noon — HPER (Cont.)						
235-	5	Educational Interpretations of Health, Physical Education and Recreation	3	Sage	MWF	Gunter 201
268-	5	Programs in Recreation	4	Shirley	MTThF	Gunter Hallway
312-	5	Evaluation in Health, Physical Education and Recreation	4	Everett	MTThF	Gunter 203
12:10-1:00 p.m. — HPER						
20-	6	Beginning Bowling (Men & Women (Fee req.)	1	Westering	TTh	Columbine
61-	6	Personal and Community Health	3	Latham	MWF	Kepner 105
65-	6	Senior Life Saving (June 16-July 16)	1	Best	MTWThF	Pool
66-	6	Water Safety Instructor's Course (July 19-Aug. 21)	1	Best	MTWThF	Pool
88-	6	Physical Education Activities for the Elementary School	2	Marburger	MTWThF	Gunter 107
246-	6	Advanced Techniques in Teaching Individual Sports (Women)	4	Behling	MTWThF	Men's Gym—
246-	26	Advanced Techniques in Teaching Individual Sports (Men)	4	Heiss	MTWThF	Courts Men's Gym—
250-	6	Administration of Physical Education	3	Montgomery	MWF	Courts 201
261-	6	Mechanical Principles of Teaching Activities in Physical Education	4	Barham	MTThF	Gunter 205
340-	6	Curriculum in Health and Physical Education	4		MTThF	Gunter 203
1:10-2:00 p.m. — HPER						
3-	7	Individual Sports (Men & Women)	1	Reitz	MWF	Gunter Field
22-	7	Fencing (Men & Women)	1	Behling	MWF	Gunter 107
121-	7	Applied Human Physiology	5	Van Anne	MTWThF	Gunter 205
200-	7	Workshop: Outdoor Recreation (1:00-4:00) (July 5-16)	3	Cyphers	MTWThF	Kepner 209
205-	7	Family Health Problems	3	Latham	MWF	Kepner 204
245-	7	Advanced Techniques in Teaching Gymnastics Activities (1:00-5:00) (Aug. 2-6)	2	Rossi	MTWThF	Men's Gym
247-	7	Advanced Techniques in Teaching Team Sports (Track 1:00-5:00) (July 12-16)	2	Benich	MTWThF	Men's Gym 201
247-	27	Advanced Techniques in Teaching Team Sports (Wrestling 1:00-5:00) (July 26-30)	2	Hancock	MTWThF	Gunter 202
248-	7	Advanced Techniques in Teaching Dance Activities (1:00-4:00) (June 21-July 2)	3	Steffy	MTWThF	Kepner 11
256-	7	Workshop in Contemporary Dance (1:00-5:00) (July 19-23)	2	Dougherty	MTWThF	Kepner 11
257-	7	Dance History and Philosophy (1:00-4:00) (July 5-16)	3	Dougherty	MTWThF	Gunter 203
265-	7	Advanced Techniques in Teaching Football to Men (1:00-5:00) (July 5-9)	2	Heiss	MTWThF	Gunter 201
266-	7	Advanced Techniques in Teaching Basketball to Men (1:00-5:00) (July 19-23)	2	Sage	MTWThF	Men's Gym— 201
275-	7	Advanced Driver Education (1:00-4:00) (August 2-13)	3	LaBonde	MTWThF	Gunter 203
401-	7	Analysis of Research and Literature in Health and Physical Education (1:00-3:00)	4	Staton	MW	Gunter 103
403-	7	Research Seminar in Health and Physical Education (1:00-3:00)	4	Everett	MW	Gunter Hallway
406-	7	Administrative Interrelationships in Health, Physical Education, and Recreation (1:00-3:00)	4		TTh	Gunter Hallway
2:10-3:00 p.m. — HPER						
20-	8	Beginning Bowling (Men & Women) (Fee req.)	1	Behling	TTh	Columbine
25-	8	Beginning Swimming (Men & Women)	1	Girten	MWF	Pool
220-	8	Scientific Bases of Health and Physical Education	5	Van Anne	MTWThF	Gunter 205
3:10-4:00 p.m. — HPER						
		Recreational Swimming	0	Guards	MWF	Pool
		Faculty Swimming	0	Guards	TTh	Pool
4:10-5:00 p.m. — HPER						
		Team Sports Program	0	Shirley-Benich	MTWThF	Gunter 103
6:10-7:00 p.m. — HPER						
		Family Fun Night	0	Shirley	W	Gunter 103
Division of Humanities						
7:10-8:00 a.m. — Humanities						
COM	1- 1	Elementary Composition I	3	Hoglin	MWF	Kepner 103
COM	2- 1	Elementary Composition II (7:10-8:25)	3	Hoglin	TTh	Kepner 103
COM	3- 1	Principles of Speech	3	Holley	MWF	Kepner 209
ENG	306- 1	Seminar in Major American Writers II	4	Gates, G.	MTThF	Kepner 110
EED	227- 1	Literature and Materials in the Junior High School	4	Carriar	MTWTh	Bishop-L 206
EED	301- 1	The Teaching of Grammar (New and Traditional)	4	Landry	MTThF	Bishop-L 204a
GER	1- 1	Elementary German I	5	LaBorne	MTWThF	Bishop-L 201
SP	280- 1	American Public Address	4	Toussaint	MTThF	Kepner 210



Best



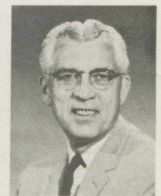
Blasi



Cyphers



Everett



Hancock



Heiss



LaBonde



Latham



Lindahl



Montgomery, R.



Rossi



Sage



Shirley

Humanities

1965 Summer Class Schedule



Staton



Steffy



Van Anne

HUMANITIES



Frease
Chairman



Carrier



Cleere



Crawford



Cross



D'Angelo



Freeman



Gates



Graham



Holley

Course	Section No.	Division, Time and Course Title	Hours Credit	Instructor	Days	Building and Room
8:10-9:00 a.m. — Humanities						
COM	1- 2	Introduction: The Greek and Roman Periods	3	Cross	MWF	Kepner 108
	3- 2	Principles of Speech	3	D'Angelo	MWF	Kepner 209
ENG	258- 2	Readings in English Literature from 700-1800	4	Huff	MTWTh	Kepner 121
ENG	315- 2	Milton Seminar	4	Gates, G.	MTThF	Kepner 110
FR	5- 2	Intermediate French Composition	4	Graham	MTThF	Kepner 6
GER	2- 2	Elementary German II	5	LaBorne	MTWThF	Bishop-L 201
SP	275- 2	Phonetics	3	Ahberg	MWF	Kepner 205
SP	350- 2	Rhetorical Theory	4	Holley	MTThF	Kepner 210
9:10-10:00 a.m. — Humanities						
ENG	2- 3	The Middle Ages and the Renaissance	3		MWF	Kepner 108
ENG	211- 3	The English Language	4	Freeman	MTWF	Frasier 105
ENG	261- 3	Readings in American Literature Since 1865	4	Frease	MTThF	Kepner 118
ENG	319- 3	Literature of the Eighteenth Century	4	Zimmerman	MTThF	Kepner 103
EED	200- 3	Workshop in the Teaching of English	4	Landry	MTThF	Bishop-L 204a
EED	228- 3	The Teaching of Reading in the Secondary School	4	Carrier	MTWTh	Bishop-L 206
FR	6- 3	Intermediate French Conversation	4	Graham	MTThF	Kepner 6
GER	3- 3	Elementary German III	5	LaBorne	MTWThF	Bishop-L 201
SP	16- 3	Voice and Diction	4	D'Angelo	MTThF	Kepner 209
SP	220- 3	Stage Costuming	4	Donley	MTWF	Frasier 71
SP	270- 3	The Psychology of Speech	4	Toussaint	MTWTh	Kepner 210
SP	315- 3	Directing High School Plays	3	Nicovich	MWF	Frasier 148
10:10-11:00 a.m. — Humanities						
COM	3- 4	Principles of Speech	3	Holley	MWF	Kepner 209
ENG	260- 4	Readings in American Literature to 1865	4	Gates, G.	MTThF	Kepner 119
ENG	304- 4	The Greek Drama	4	Cross	MTWF	Kepner 118
EED	302- 4	The Teaching of Composition	4	Landry	MTThF	Bishop-L 204a
EED	350- 4	Seminar in Literature for Adolescents	4	Carrier	MTWTh	Bishop-L 206
FR	7- 4	Intermediate French Fiction	4	Graham	MTThF	Kepner 6
JOUR	201- 4	Sponsorship of School Newspaper and Annual (Newspaper only, Summer 1965) (June 16-August 6, 10:10-11:00 a.m.; plus June 21-July 2, 2:10-3:00 p.m.)	3	Hartman-Cole	MWF	Frasier 101
SP	113- 4	Stagecraft (Summer Theatre Members and permission of instructor)	3	Wolfe	MWF	Frasier 171
SP	294- 4	Critical Thinking	4	Toussaint	MTWTh	Kepner 210
11:10-12 noon — Humanities						
ENG	231- 5	The Short Story	3	Cross	MWF	Kepner 218
ENG	259- 5	Readings in English Literature from 1800 to the Present	4	Huff	MTWTh	Kepner 101
ENG	314- 5	Shakespeare Seminar	4	Freeman	MTWF	Kepner 121
FL	210- 5	Linguistics	3	Graham	MWF	Kepner 6
SP	218- 5	Discussion Techniques	4	Crawford	MTThF	Kepner 209
SP	251- 5	Speech for the Classroom Teacher	4	Longwell	MTWTh	Kepner 103
12:10-1:00 p.m. — Humanities						
COM	1- 6	Elementary Composition I	3	Leinius	MWF	Kepner 118
COM	3- 6	Principles of Speech	3	Crawford	MWF	Kepner 209
ENG	49- 6	English Literature from 1500 to 1660	3	Zimmerman	MWF	Kepner 103
ENG	312- 6	Old English	4	Freeman	MTWF	Kepner 120
1:10-2:00 p.m. — Humanities						
COM	3- 7	The Eighteenth to the Twentieth Centuries	3	Princic	MWF	Kepner 123
COM	330- 7	Graduate Readings Course in the Humanities	3	Cross	MWF	Kepner 118
SP	1- 7	Elementary Composition I	3	Leinius	MWF	Kepner 103
SP	217- 7	Advanced Oral Interpretation	3	Norton	MWF	Frasier 71
SP	228- 7	Television in Education (Lab. 1:10-3:00, TTh)	4	Jamison	MW	Bishop-L 228
SP	248- 7	Workshop in Speech Education: Classroom Projects (1:30-4:30) (June 28-July 9)	3	Holley-Toussaint-Longwell	MTWThF	Kepner 210
SP	330- 7	History of the Theatre	4	Nicovich	MTWF	Frasier 148
2:10-3:00 p.m. — Humanities						
ENG	325- 8	Seminar in World Literature	4	Princic	MTWTh	Kepner 101
SP	210- 8	Summer Theatre Workshop I	5	Langworthy-Wolfe	MTWThF	Frasier 71
3:10-4:00 p.m. — Humanities						
SP	115- 9	Beginning Characterization	4	Langworthy	MTWF	Frasier 71
SP	208- 9	Introduction to Radio and Television Production (Lab. 3:10-5:00, TTh)	4	Jamison	MW	Bishop-L 228
SP	213- 9	Advanced Staging Techniques	4	Wolfe	MTWF	Frasier 171
4:10-5:25 p.m. — Humanities						
ENG	236-10	Modern Drama Since Ibsen	3	Nicovich	MT	Frasier 148

Music

1965 Summer Class Schedule

Course	Section No.	Division, Time and Course Title	Hours Credit	Instructor	Days	Building and Room
--------	-------------	---------------------------------	--------------	------------	------	-------------------

Division of Music

Hours Arranged — Music

205-71	Music Performance Individual Instruction—Voice	1	Himmel	Arr.	Frasier	252
205-73	Music Performance Individual Instruction—Voice	1	Schmitz	Arr.	Frasier	150
205-74	Music Performance Individual Instruction—Voice	1	Skinner	Arr.	Frasier	253
205-75	Music Performance Individual Instruction—Piano	1	Dykens	Arr.	Frasier	156
205-76	Music Performance Individual Instruction—Piano	1	Fluke	Arr.	Frasier	166
205-77	Music Performance Individual Instruction—Piano	1	Goodbrod	Arr.	Frasier	154
205-78	Music Performance Individual Instruction—Piano	1	Hutcherson	Arr.	Frasier	155
205-79	Music Performance Individual Instruction—Piano	1	Menk	Arr.	Frasier	151
205-80	Music Performance Individual Instruction—Piano	1	Schenkman	Arr.	Frasier	152
205-81	Music Performance Individual Instruction—Piano	1	Smith	Arr.	Frasier	153
205-82	Music Performance Individual Instruction—Organ	1	Smith	Arr.	Frasier	55B
205-83	Music Performance Individual Instruction—Strings	1	Powers	Arr.	Frasier	52
205-84	Music Performance Individual Instruction—Strings	1	Ginsburg	Arr.	Frasier	255
205-85	Music Performance Individual Instruction—Strings	1	Mickens	Arr.	Frasier	251
205-86	Music Performance Individual Instruction—Woodwinds	1	Evans	Arr.	Frasier	254
205-87	Music Performance Individual Instruction—Woodwinds	1	James	Arr.	Frasier	48
205-88	Music Performance Individual Instruction—Brass	1	Miller	Arr.	Frasier	53
205-89	Music Performance Individual Instruction—Brass	1	Walker	Arr.	Frasier	50

7:10-8:00 a.m. — Music

194- 1	Percussion Class	1	James	TTh	Frasier	58
220- 1	Instrument Repair and Care	2	King	TTh	Frasier	63
262- 1	Symphonic Literature	3	Dykens	MWF	Frasier	169
270- 1	Eighteenth Century Harmony and Forms	3	Goodbrod	MWF	Frasier	149
350- 1	Practical Arranging	3	Miller	MWF	Frasier	54
380- 1	Survey of Music History	3	Smith	MWF	Frasier	168

8:10-9:00 a.m. — Music

159- 2	History of Music II (June 16-July 16)	2	Smith	MTWTh	Frasier	54
160- 2	History of Music III (July 19-August 20)	2	Smith	MTWTh	Frasier	54
206- 2	Music and Recreation	2	Nofziger	TTh	Frasier	168
251- 2	Teaching Secondary School Music	3	Nofziger	MWF	Frasier	168
383- 2	Seminar: The Romantic Period	3	Schenkman	MWF	Frasier	149
384- 2	Seminar: Beethoven	2	Schenkman	TTh	Frasier	169
420- 2	Criteria for Music Analysis and Comparison (8:10-10:00)	4	Hutcherson	TTh	Frasier	149
ID 300-62	Introduction to Graduate Study	3	Mohr	MWF	Frasier	249

9:10-10:00 a.m. — Music

190- 3	Clarinet Class	1	James	TTh	Frasier	58
196- 3	Voice Class	1	Schmitz	TTh	Frasier	168
249- 3	Music Methods and Materials for Elementary Teachers	2	Tipton	MWF	Frasier	168
276- 3	American Music	3	Smith	MWF	Frasier	149
305- 3	Supervising Elementary Teachers of Music	3	Nofziger	MWF	Frasier	169
319- 3	Instrumental Techniques and Materials (Woodwinds)	5	Evans	MTWThF	Frasier	54
320- 3	Instrumental Techniques and Materials (Brass)	5	Miller	MTWThF	Frasier	63

10:10-11:00 a.m. — Music

205- 4	Music Performance Brass Ensemble	1	Miller	TTh	Frasier	63
224- 4	Practicum in Choral Conducting and Performance	3	Skinner	MWF	Frasier	256
243- 4	Vocal Repertoire: French and English: 19th and 20th Centuries	2	Himmel	TTh	Frasier	168
249- 4	Music Methods and Materials for Elementary Teachers	2	Fluke	MWF	Frasier	169
270- 4	Eighteenth Century Harmony and Forms	3	Hutcherson	MWF	Frasier	149
272- 4	Twentieth Century Harmony and Forms (10:10-11:30)	3	Dykens	TTh	Frasier	149
310- 4	Problems of Instrumental Supervision (10:10-12:00)	4	King	TTh	Frasier	58
325- 4	Comparative Piano Teaching Methods and Materials	3	Goodbrod	MWF	Frasier	51
402- 4	Foundations of Music Education	3	Tipton	MWF	Frasier	168

11:10-12 noon — Music

10- 5	Beginning Class Piano I	1	Fluke	TTh	Frasier	51
205- 5	Music Performance Woodwind Ensemble	1	Evans	TTh	Frasier	54
242- 5	Vocal Repertoire: German Lieder	2	Himmel	TTh	Frasier	169
253- 5	Music for the Exceptional Child	3	Fluke	MWF	Frasier	54
258- 5	Composition	3	Menk	MWF	Frasier	149
274- 5	Teaching Music Appreciation	3	Tipton	MWF	Frasier	168
311- 5	Improvement of Instruction in Instrumental Music	3	King	MWF	Frasier	58
323- 5	Comparative Voice Methods and Materials	3	Himmel	MWF	Frasier	169
351- 5	Advanced Conducting	5	Walker	MTWThF	Frasier	63



Huff



Jamison



LaBorne



Landry



Langworthy



Norton



Princic



Toussaint



Zimmerman

MUSIC



Mohr
Chairman



Dykens



Evans



Fluke

Music-- Nursing Sciences

1965 Summer Class Schedule

Course	Section No.	Division, Time and Course Title	Hours Credit	Instructor	Days	Building and Room
12:10-1:00 p.m. — Music						
205-6	6	Music Performance Mixed Concert Choir	1	Skinner	MWF	Frasier 256
205-26		Music Performance Symphony Orchestra	1	Evans	MWF	Frasier 63
205-36		Music Performance Chamber Orchestra	1	Mickens	TTh	Frasier 63
385-6		New Music	2	Dykens	TTh	Frasier 149
1:10-2:00 p.m. — Music						
10-7		Beginning Class Piano I	1	Menk	TTh	Frasier 51
52-7		Harmony I	3	Menk	MWF	Frasier 149
193-7		String Class	1	Mickens	TTh	Frasier 54
205-7		Music Performance Concert Band	1	James	TTh	Frasier 63
216-7		Methods and Materials for Class Voice Instruction	3	Tipton	MWF	Frasier 168
217-7		Methods and Materials for Class Instrumental Instruction	3	James	MWF	Frasier 58
256-7		Psychology of Music	3	King	MWF	Frasier 169
2:10-3:00 p.m. — Music						
49-8		Music Fundamentals I	2	Ginsburg	MWF	Frasier 168
202-8		Opera Workshop (2:10-4:00)	3	Schmitz-Skinner	WF	Frasier 63
205-8		Music Performance Symphonic Winds (2:10-4:00)	1	Walker	MTTh	Frasier 63
317-8		Instrumental Techniques and Materials (Violin and Viola)	3	Mickens	MTTh	Frasier 54
318-8		Instrumental Techniques and Materials (Cello and Bass)	3	Powers	MTTh	Frasier 52

Division of Nursing

1:10-2:00 p.m. — Nursing						
NURS	105-7	Medical-Surgical Nursing II (Lab. 24 hrs. arranged) (1:10-3:00)	12	Carlson Payton	MWTh	Weld Co. Gen. Hosp.

Division of the Sciences

Hours Arranged — Science						
CHEM	280-13	Organic Qualitative Analysis	3	Beel	Arr.	Science 101
7:10-8:00 a.m. — Science						
APST	275-1	Descriptive Statistics (Lab. 2 hrs. arr.)	5	Johnson, R.	MTWTh	Science L106
APST	275-21	Descriptive Statistics (Lab. 2 hrs. arr.)	5	Heimerl, B.	MTWTh	Science L105
APST	376-1	Statistical Inference	5	Patterson	MTWThF	Science 302
BIO	252-1	Genetics (Lab. TTh 1-3)	5	Widmer	MWF	Science 214
BIO	296-1	Ecological Principles (Lab. 6 hrs. TTh 7-9, 10-11) (NSF Biology Institute)	5	Thomas	MW	Science L107
BOT	221-1	Plant Anatomy (Lab. 2 hrs. T 8-10)	3	Moinat	MW	Science 245
CHEM	46-1	Qualitative Analysis (Lab. 4 hrs. TTh 1-3)	5		MWF	Science 35
CHEM	246-1	Quantitative Analysis II (Lab. 4 hrs. MW 1-3)	5	Woerner	MWF	Science 111
ESCI	234-1	Geomorphology	4	Tollefson	MTWTh	Science 329
MATH	202-1	Basic Mathematical Logic	3	Fry	MWF	Science 304
MATH	344-1	Modern Geometry II	5	Fisch	MTWThF	Science 305
ZOO	114-1	Ornithology	3	Johnson, J.	MWF	Science 215
8:10-9:00 a.m. — Science						
	3-2	Physical Science	3		MWF	Science L107
APST	275-2	Descriptive Statistics (Lab. 2 hrs. arr.)	5	Fry	MTWTh	Science L105
BIO	297-2	Basic Genetics (Lab. 4 hrs. M 1-5) (NSF Biology Institute)	4	Winchester	MW	Science 300
CHEM	243-2	Organic Chemistry III (Lab. 2 hrs. T 1-3)	5	Tomasi	MTWF	Science 224
CHEM	282-2	Physical Chemistry II (Lab. 2 hrs. Th 3-5)	5	Koch	MTWF	Science 111
CHEM	291-2	Structure of Matter (June 26-August 20) (Seminar attendance req.) (NSF Chemistry Institute)	5	Sanderson, R. T.	MTWThF	Science L104
MATH	31-2	Calculus with Analytic Geometry I (2 hrs. req., 8 & 1) (June 16-July 16)	5	Anders	MTWThF	Science 302
MATH	32-2	Calculus with Analytic Geometry II (2 hrs. req., 8 & 1) (July 19-August 20)	5	Anders	MTWThF	Science 302
MATH	223-2	Modern Algebra I	5	Johnson, R.	MTWThF	Science 305
MATH	277-2	Mathematics Teachers Workshop I (Elementary) (3 hrs. req., 8-10, 11-12) (June 21-July 2)	3	Woods	MTWThF	Science L106
MATH	278-2	Mathematics Teachers Workshop II (Jr. High) (3 hrs. req., 8-10, 11-12) (July 6-16)	3	Woods	MTWThF	Science L106
MATH	290-2	Foundations of Arithmetic	3	Popejoy	MWF	Science 304
MED	374-2	Seminar in Teaching Secondary School Mathematics (8:10-10:00)	4	Popejoy	TTh	Science 303



Ginsburg



Goodbrod



Himmel



Hutcherson



James



King



Menk



Mickens



Miller



Nofziger



Schenkman



Schmitz



Skinner



Smith

Sciences

1965 Summer Class Schedule

Course	No. Section	Division, Time and Course Title	Hours Credit	Instructor	Days	Building and Room
8:10-9:00 a.m. — Science (Cont.)						
PHYS	261- 2	Mechanics II	4	Aas	MTWF	Science 34
SCED	270- 2	Teaching Science in the Elementary School	3	Sund	MWF	Science 358
SCED	372- 2	Improvement of Science Instruction in the Secondary School Through Curriculum Development	3	Olson, K.	MWF	Science 357
ZOO	11- 2	General Zoology-Invertebrate (Lab. 4 hrs., TTh 8-10)	5	Johnson, J.	MWF	Science 204
ZOO	310- 2	Entomology (Lab. 4 hrs. arr., MW 1-3)	4	Schmidt, G.	MW	Science 301
9:10-10:00 a.m. — Science						
	5- 3	Earth Science	3	Sund	MWF	Science L105
APST	275- 3	Descriptive Statistics (Lab. 2 hrs. arr.)	5	Fisch	MTWTh	Science L104
BOT	23- 3	General Botany II (Lab. 4 hrs., TTh 10-12)	5	Gapter	MWF	Science 224
CHEM	40- 3	Principles of Chemistry I (2 hrs. req. 9 & 1) (Lab. M 2-4 & W 2-4) (June 16-July 16)	5	Fields	MTWF	Science 111
CHEM	41- 3	Principles of Chemistry II (2 hrs. req. 9 & 1) (Lab. M 2-4 & W 2-4) (July 19-August 20)	5	Fields	MTWF	Science 111
CHEM	147- 3	Biochemistry (Lab. 2 hrs. F 1-3)	5	Tomasi	MTWF	Science 301
CHEM	292- 3	Introductory Organic Chemistry (Lab. 3 hrs. Th 9-12) (June 26-August 20) (NSF Chemistry Institute)	4	Beel	MTWF	Science 300
ESCI	136- 3	General Geology (Field trips req.) (\$6 field trip fee)	4	Tollefson	MTWTh	Science 331
MATH	25- 3	Plane Trigonometry	5	Greer, J.	MTWThF	Science 302
MATH	203- 3	Structure of Numbers	3	Patterson	MWF	Science 305
MED	364- 3	History of Mathematics II	3	Schmidt, D.	MWF	Science 304
MED	471- 3	Seminar in Mathematics Education	3	Popejoy	MWF	Science 303
PHYS	62- 3	General Physics-Electricity (Lab. 2 hrs. Th 1-3)	5	Aas	MTWF	Science 34
PHYS	162- 3	Electricity and Magnetism I	4	Hayes	MTWF	Science 35
SCED	271- 3	Improvement of Science Instruction in the Elementary School Through Curriculum Development	3	Trowbridge	MWF	Science 358
SCED	477- 3	Evaluation and Testing in Science	4	Glidden	MTWF	Science L107
ZOO	215- 3	Vertebrate Embryology (Lab. 4 hrs. TTh 10-12)	5	Widmer	MWF	Science 225
10:10-11:00 a.m. — Science						
	4- 4	Biological Science	3	Schmidt, G.	MWF	Science L106
	209- 4	Aviation and Space Flight	4	Olson, K.	MTWF	Science 331
BIO	298- 4	Plant Growth, Development and Regulation (Lab. 4 hrs. T 1-5) (NSF Biology Institute)	4	Mellor	MW	Science L107
BOT	320- 4	Plant Growth and Development (Lab. 2 hrs. T 8-10)	4	Moinat	MWF	Science 224
CHEM	249- 4	Inorganic Chemistry	4	Woerner	MTWF	Science 34
CHEM	281- 4	Physical Chemistry I (Lab. 2 hrs. Th 1-3)	5	Patterson	MTWF	Science 125
MATH	201- 4	Theory of Sets	3	Fry	MWF	Science 304
MATH	242- 4	College Geometry	5	Johnson, R.	MTWThF	Science 303
MATH	243- 4	Modern Geometry I	5	Fisch	MTWThF	Science 302
MATH	250- 4	Probability Theory	3	Patterson	MWF	Science 305
PHYS	61- 4	General Physics-Mechanics (Lab. 2 hrs. Th 1-3)	5	Hayes	MTWF	Science 35
SCED	375- 4	Development of Scientific Inquiry Abilities of Children Through Science	4	Neal	MTWF	Science 357
ZOO	211- 4	Comparative Anatomy of the Vertebrates (Lab. 4 hrs. TTh 10-12)	4	Johnson, J.	MW	Science 226
11:10-12:00 a.m. — Science						
BIO	53- 5	Heredity and Your Life	3	Winchester	MWF	Science 214
CHEM	293- 5	Quantitative Analysis (Lab. 3 hrs. Th 1-4) (June 26-August 20) (NSF Chemistry Institute)	4	Koch	MTWF	Science 300
CHEM	344- 5	Theoretical Organic Chemistry	3	Tomasi	MWF	Science 111
ESCI	233- 5	Mineralogy (Lab. 4 hrs. MW 11-1)	4	Tollefson	TTh	Science 331
MATH	33- 5	Calculus with Analytic Geometry III	5	Greer, J.	MTWThF	Science 302
MATH	233- 5	Advanced Calculus II	5	Fry	MTWThF	Science 303
MED	372- 5	Curriculum in Teaching Secondary School Mathematics	4	Patterson	MTWTh	Science 304
MED	373- 5	Problems in Teaching Secondary School Mathematics	4	Popejoy	MTWTh	Science 305
PHYS	268- 5	Nuclear Physics I (Lab. 2 hrs. Th 9-11)	5	Aas	MTWF	Science 34
SCED	270- 5	Teaching Science in the Elementary School	3	Olson, K.	MWF	Science 358
SCED	374- 5	Instructional Problems in Teaching Science	3	Trowbridge	MWF	Science 357
SCED	376- 5	History of Science	3	Sund	MWF	Science 35
ZOO	318- 5	Vertebrate Histology (Lab. 4 hrs. TTh 3-5)	5	Schmidt, G.	MWF	Science 224
12:10-1:00 p.m. — Science						
	3- 6	Physical Science	3	Fields	MWF	Science L107
APST	475- 6	Design and Analysis of Experiments	5	Heimerl, B.	MTWThF	Science 302
BOT	325- 6	Plant Ecology (Lab. 4 hrs. Th 1-5)	5	Moinat	MWF	Science 214
ZOO	210- 6	Cytology	3	Widmer	MWF	Science 224
1:10-2:00 p.m. — Science						
	207- 7	Aerospace Workshop (1-4) (July 5-16)	3	Olson, K.— ROTC Staff	MTWThF	Science L105
	208- 7	Elementary Science Workshop (1-4) (July 26-August 6)	3	Neal- Trowbridge	MTWThF	Science L105



Tipton



Walker

NURSING



McMinn
Chairman



Carlson



Hallan



Payton

SCIENCE



Glidden
Chairman



Aas



Anders



Beel



Fisch



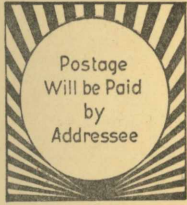
Fry



Gapter

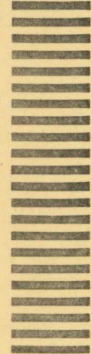


Greer



BUSINESS REPLY MAIL
First Class Permit No. 182—Greeley, Colorado

REGISTRAR
COLORADO STATE COLLEGE
GREELEY, COLORADO 80631



BUSINESS REPLY CARD

My student number* at CSC is _____

You must return this card if you intend to enroll for classes at Colorado State College for the current Summer Quarter.

Name Miss
Mrs.
Mr. Last First Middle

Address _____
Street City State

*If you have attended CSC since August 31, 1959, you have been assigned a student number. If you do not have a student number you must complete the statistical information form on page 31 and mail it to the registrar immediately. (If you have been assigned a student number but do not remember it, leave the space blank!)

Fill in Each Blank Below Which Applies to You:

- 1. I am a **GRADUATE** student: new _____ returning _____
 - a. I have been admitted, my application has been evaluated, and I am classified as a degree candidate for the _____ degree.
 - b. I am unclassified and do not wish to enroll as a degree candidate.
 - c. I wish to apply for admission and evaluation as a degree candidate. What degree? _____
- 2. I am an **UNDERGRADUATE** student: new _____ returning _____
 - a. I have been admitted, evaluated, and classified as an A.B. degree candidate.
 - b. I am unclassified and do not wish to enroll as a degree candidate.
 - c. I wish to apply for admission and evaluation as a degree candidate.
- 3. I will be a beginning freshman _____
- 4. I will need instructions, etc., to apply for **UNDERGRADUATE transfer credit** _____
- 5. As a former student with a minimum of 135 quarter hours I wish to apply for graduation _____ (I have not applied previously.)
- 6. I have applied for graduation and my proposed graduation is _____ Quarter, 19 _____
- 7. Please mail the following items to me:
 - a. A Summer Quarter Bulletin _____
 - b. A Current General Catalog _____ (For new students only!)
 - c. A Graduate Bulletin _____
 - d. An Additional Statistical Information Form _____
- 8. If you need specific information about a certain course listed in the Summer Bulletin, you **must** write to the particular division concerned.

Please Read Carefully and Fill Out Card Completely!

Sciences

1965 Summer Class Schedule



Hayes



Heimerl, B.



Johnson



Koch



Moinat



Olson



Patterson



Popejoy



Schmidt



Sund



Thomas



Tollefson



Tomasi



Trowbridge

Course	Section No.	Division, Time and Course Title	Hours Credit	Instructor	Days	Building and Room
1:10-2:00 p.m. — Science (Cont.)						
BIO	257- 7	Conservation of Natural Resources (1-4) (Film hr. req.) (\$20 field trip fee) (June 21-July 2)	4	Glidden-Johnson, J.	MTWThF	Science L106
BIO	299- 7	Seminar in Science Inquiry (1-5) (NSF Biology Institute)	2	Sund	Th	Science L104
BOT	227- 7	Identification of Seed Plants of the Local Flora (Lab. 6 hrs. MW 2-5)	5	Gapter	MW	Science 215
ESCI	130- 7	General Meteorology	3	Trowbridge	MWF	Science 329
ESCI	230- 7	Common Minerals and Rocks (1-4) (\$2.50 field trip fee) (July 12-24)	3	Tollefson	MTWThF	Science 331
MATH	222- 7	Basic Matrix Algebra	5	Greer, J.	MTWThF	Science 305
MATH	291- 7	Theory of Numbers	5	Schmidt, D.	MTWThF	Science 304
SCED	373- 7	Seminar in Science Education	3	Sund	MWF	Science 357

2:10-3:00 p.m. — Science						
BIO	357- 8	Biological Research (Lab. 6 hrs. arr.)	5	Winchester	TTh	Science 209
MATH	281- 8	Introductory Computer Mathematics (Lab. 2 hrs. arr.)	5	Anders	MTWTh	Science 305
MATH	340- 8	Introduction to Topology	4	Schmidt, D.	MTWTh	Science 302
PHYS	264- 8	Electronics (Lab. 2 hrs. Th 3-5)	5	Hayes	MTWF	Science 35

3:10-4:00 p.m. — Science						
CHEM	285- 9	Chemical Literature	1	Woerner	M	Science 111

4:10-5:00 p.m. — Science						
CHEM	346-10	Seminar in Chemistry	1		M	Science 111

6:30-10:00 p.m. — Science						
	330-12	Graduate Readings Course in Science	4	Glidden	T	Science L107

Division of the Social Sciences

Hours Arranged — Social Sciences						
GEOG	392-70	Syracuse University Summer Field Course in Geography (Enrollment limited. Permission req. from CSC Geog. staff) (Aug. 9-Sept. 3)	8	Koller	MTWThF	
USH	272-70	Contemporary American Foreign Policy (Total cost of this field study course which involves travel to Washington and New York is about \$225 plus tuition. See Page 4 for details.) (June 5-15)	3	Reynolds		Faculty Lounge, 903 19th St.

7:10-8:00 a.m. — Social Science						
	82- 1	American Life and Institutions	3	Fredriksson	MWF	Kepner 206
	83- 1	Contemporary World Cultures	3	Rothweiler	MWF	Kepner 222
	200- 1	Social Philosophy	3	Zeleny	MWF	Kepner 217
GEOG	360- 1	Political Geography	5	West	MTWThF	Kepner 219
SOC	291- 1	Social Psychology	3	Willoughby	MWF	Kepner 122
WHS	32- 1	World History III	4	Byerly	MTThF	Kepner 125
WHS	200- 1	Introduction to Historical Research	3	Matoren	MWF	Kepner 105

8:10-9:00 a.m. — Social Science						
	220- 2	European Contributions to American Culture (European study-travel program. Class will meet on campus the first five weeks from 8:10-11:00 daily and then will go to Europe for 36 days. Round trip via jet from Denver. Terminates August 18. Travel cost \$1215 from Greeley to Greeley. Tuition and living expenses on campus are additional. (See page 4 for details.) (June 16-August 19)	15	Arnold-Koller	MTWThF	Kepner 125
	220-22	European Contribution to American Culture (European study-travel program. Class will meet on campus the first 5 weeks from 8:10-11:00 daily and then will go to Europe for 36 days. Round trip via jet from Denver. Terminates August 18. Travel cost \$1215 from Greeley to Greeley. Tuition and living expenses on campus are additional. See page 4 for details.) (June 16-August 19)	11	Arnold-Koller	MTWThF	Kepner 125
ANT	323- 2	Spanish-American Culture	3	Mickey, B.	MWF	Kepner 204
ECON	102- 2	Contemporary Economic Problems	3	Trainer	MWF	Kepner 122
GEOG	48- 2	Anglo-America	5	West	MTWThF	Kepner 219
PSCI	176- 2	International Relations	3	Rothweiler	MWF	Kepner 222
PSCI	275- 2	The United Nations	3	Christensen	MWF	Kepner 105

Sciences

1965 Summer Class Schedule



Winchester



Woerner



Woods

SOCIAL SCIENCE



Reynolds
Chairman



Arnold



Boeck



Byerly



Koller



Matoren



Mickey, B.



Mickey, J.



Perchlik



Pogue



Quammen



Rothweiler



Trainer



Van Dusen



West



Willoughby

Course	No. Section	Division, Time and Course Title	Hours Credit	Instructor	Days	Building and Room
8:10-9:00 a.m. — Social Science (Cont.)						
SOC	206- 2	Crime and Delinquency	3	Zeleny	MWF	Kepner 206
USH	70- 2	United States History I	3	Pogue	MWF	Kepner 218
USH	251- 2	Colonial America 1607-1763	3	Boeck	MWF	Kepner 216
WHS	333- 2	Revolutions in Modern Times	5	Matoren	MTWThF	Kepner 217
9:10-10:00 a.m. — Social Science						
ANT	20- 3	General Anthropology	5	Mickey, J.	MTWThF	Kepner 206
GEOG	244- 3	Asia	5	Van Dusen	MTWThF	Kepner 222
GEOG	250- 3	Geography of Colorado	2	Pogue	TTh	Kepner 218
PSCI	377- 3	Constitutional Law	5	Christensen	MTWThF	Kepner 204
SOC	50- 3	Principles of Sociology	5	Willoughby	MTWThF	Kepner 105
USH	209- 3	Economic History of the United States	4	Trainer	MTWF	Kepner 122
USH	246- 3	Geographic Influences in United States History	2	Koller	TTh	Kepner 216
WHS	372- 3	Constitutional History of Medieval England	3	Byerly	MWF	Kepner 217
10:10-11:00 a.m. — Social Science						
ANT	20- 4	General Anthropology	5	Mickey, B.	MTWThF	Kepner 206
ECON	320- 4	History of Economic Thought	3	Trainer	MWF	Kepner 217
GEOG	10- 4	World Geography	5	Van Dusen	MTWThF	Kepner 222
GEOG	221- 4	Physical Geography	5	West	MTWThF	Kepner 219
PSCI	280- 4	Regional and Supranational Political Organizations	3	Rothweiler	MWF	Kepner 218
SOC	310- 4	Comparative Social Institutions	5	Quammen	MTWThF	Kepner 204
USH	356- 4	Topics in American History	2	Boeck	TTh	Kepner 216
WHS	267- 4	Europe, 1870-1914	5	Matoren	MTWThF	Kepner 122
11:10-12 noon — Social Science						
ANT	82- 5	American Life and Institutions	3	Fredriksson	MWF	Kepner 122
ANT	225- 5	Cultures of Africa; South of the Sahara	5	Mickey, J.	MTWThF	Kepner 105
ECON	210- 5	History of Economic Systems: Socialism, Communism, Capitalism, Fascism	5	Quammen	MTWThF	Kepner 204
GEOG	237- 5	Middle America	3	Koller	MWF	Kepner 219
PSCI	40- 5	National Government of the United States	5	Christensen	MTWThF	Kepner 206
SOC	292- 5	Problems of Intergroup Relations	2	Willoughby	TTh	Kepner 122
SSED	305- 5	Improvement of Instruction in Social Studies in the Secondary School	3	Perchlik	MWF	Kepner 205
USH	75- 5	Unit Survey of United States History	5	Pogue	MTWThF	Kepner 222
USH	366- 5	The Era of Jacksonian Democracy, 1815-1850	5	Boeck	MTWThF	Kepner 216
WHS	264- 5	The Old Regime, 1600-1789	5	Byerly	MTWThF	Kepner 217
12:10-1:00 p.m. — Social Science						
GEOG	81- 6	The Individual and his Social Relations	3	Willoughby	MWF	Kepner 122
GEOG	365- 6	The Soviet Union	3	Van Dusen	MWF	Kepner 222
PSCI	172- 6	Problems in United States Government	3	Perchlik	MWF	Kepner 205
1:10-2:00 p.m. — Social Science						
	81- 7	The Individual and his Social Relations	3	Mickey, B.	MWF	Kepner 206
	330- 7	Graduate Readings Course in the Social Sciences (1:10-3:00)	4	Reynolds	TTh	Kepner 122
SOC	204- 7	Marriage and the Family	3	Zeleny	MWF	Kepner 105
USH	250- 7	History of Colorado	2	Pogue	TTh	Kepner 206
WHS	332- 7	Interrelationship of Western and Eastern Civilizations (June 16-July 16) (1:10-3:00)	3	Arnold	MWF	Kepner 119
WHS	399- 7	Historiography (1:10-4:00)	3	Boeck	Th	Kepner 125
2:10-3:00 p.m. — Social Science						
GEOG	83- 8	Contemporary World Cultures	3	Mickey, J.	MWF	Kepner 105
GEOG	370- 8	Urban Geography (2:10-4:25)	5	Koller	TTh	Kepner 220
PSCI	379- 8	Seminar in International Politics (2:10-5:00)	3	Rothweiler	T	Kepner 125

Statistical Information Form Colorado State College--Greeley

If you have not attended Colorado State College since August 31, 1959, you must complete this form and return it to the Registrar's Office prior to registration in order that Registration Materials (IBM CARDS) may be prepared.

Complete this form with typewriter or print in ink

Please complete this line

Name _____
(Last) (First) (Middle) (Maiden, if applicable)
(No Nicknames, Please!!)

Birthdate _____
(Month-Day-Year)

Sex: Male () Female () Marital Status: Single () Married ()

Permanent Home Address _____
(City) (County) (State) (Country)

If your home is in Colorado, when did this residence begin for you? _____

Where were you living during the past 12 months? _____

Name of parent or guardian _____

Permanent address of parent or guardian _____

When did this residence begin for your parent? _____

If married, give name of husband or wife _____

What was your occupation during the past 12 months? _____

City and state of employment _____

What was the occupation of your spouse during the last 12 months? _____

City and state of employment of spouse _____

Name high schools and academies attended:

School Name	City-County-State	Dates Attended	Yr. Graduated

Names of all colleges and universities attended in order of attendance from earliest to latest date.
 Failure to list colleges or universities previously attended may result in loss of credit or dismissal.

Name of Institution	City State	Period of Attendance (Quarter and/or Semester and the years)	Date of Graduation (if applicable)	Degree Received (if any)

Have you previously taken CSC correspondence or off-campus courses? Yes () When? _____
 No ()

Check your proper Classification: Freshman () Junior ()
 Sophomore () Senior ()

Graduate ():
 Master of Arts () Doctor of Education ()
 Specialist () Doctor of Philosophy ()
 Unclassified ()

Your proposed degree program: 1. () Teacher Education
 2. () Without Teacher Education (Liberal Arts)

Your major(s) _____ Minor(s) _____

New and returning students: When do you expect to enter (or re-enter) CSC?
 Fall () Winter () Spring () Summer () Year _____

Returning students only: When was your last enrollment at CSC?
 Fall () Winter () Spring () Summer () Year _____

DO NOT WRITE IN THIS SPACE

1. _____ Student No.

2. _____ Alpha No.

3. _____ Birthdate

4. _____ Sex

5. _____ Residence Status

6. _____ City

7. _____ County

8. _____ State

9. _____ Name of High School

10. _____ County

11. _____ State

12. _____ Year Graduated

13. _____ Classification

14. _____ Degree Program

15. _____ Major

16. _____ Quarter and Year

DO NOT WRITE IN THIS SPACE

LAST NAME
FIRST NAME
MIDDLE NAME
MAIDEN, if applicable

Campus Information



Textbook and instructional materials exhibits are on display each summer.

Family Fun Night is a favorite among the youngsters.



During the 10-week Summer Quarter, morning classes will be held in Ernest Horn Elementary School (Nursery, Kindergarten, and grades one through six) and the Special Education School. No classes will be held in the secondary school although several special programs will be conducted by the Laboratory School personnel. For information about enrollment in the elementary or special education schools program, please write to the Director, Laboratory School, or Director, Special Education School, CSC.

Greeley School District No. 6 is offering a summer school for students in grades 2 through 12. Tentative dates for the school are June 28 to August 6. Instruction will be individualized whenever possible. Closing date for application will be June 15. For further information, please contact Mr. Richard Biddle, assistant principal, Greeley High School.

Summer Guest Faculty

- Abbott, Patricia, M.A., Fine Arts teacher, Greeley School District No. 6. (Fine Arts)
Brown, James E., M.A., Graphic Arts teacher, School District No. 11, Colorado Springs. (Graphic Arts)
Budy, Donald F., B.A., Instructor in Arts and Crafts, School District No. 6, Greeley. (Fine Arts)
Cassidy, Frances, M.A., Instructor of Pre-Vocational Mentally Retarded, Special Education School, Greeley. (Special Education)
Copple, C. Rockne, Ed.D., Associate Professor of Psychology, Eastern Montana College of Education, Billings, Mont. (Educational Psychology and Guidance)
Donley, Joyce, M.A., Instructor in Speech, Northern Illinois University, DeKalb, Ill. (Drama)
Dunwell, Robert R., Ed.D., Associate Professor of Education, Hanover College, Hanover, Ind. (Education)
Heddens, James W., Ed.D., Assistant Professor of Education, Kent State University, Kent, Ohio. (Elementary Education)
Hill, Wanda L., B.A.L.S., Dickerson, Maryland. (Library Science)
Hockstrasser, Herbert J., B.S., Science and Conservation teacher, School District No. 3, Fort Morgan. (Science)
Maddox, Lucy J., Ph.D., Director, Spring Arbor, Mich., College Library. (Library Science)
Pasch, Dorothy F., M.A., Director of Special Education, Toledo, Ohio, Public Schools. (Special Education)
Powers, Dudley, Professor of Cello, Northwestern University, Evanston, Ill. (Music)
Pritchett, Samuel L., M.S., Assistant Professor of Power Mechanics, Purdue University, LaFayette, Ind. (Industrial Arts)
Schimke, Jean, M.A., Instructor of the Mentally Retarded, Special Education School, Greeley. (Special Education)
Tawney, James W., M.A., Instructor of the Mentally Retarded, Special Education School, Greeley. (Special Education)
Zeitlow, August L., M.A., Instructor of the Mentally Retarded, Special Education School, Greeley. (Special Education)

General Information

Colorado State College, a state-supported college, was founded in 1890 by members of Horace Greeley's Union Colony. It is primarily a teacher education institution although educational demands from throughout the state have caused the college to widen its liberal arts offerings. Average summer enrollment is 4,500.

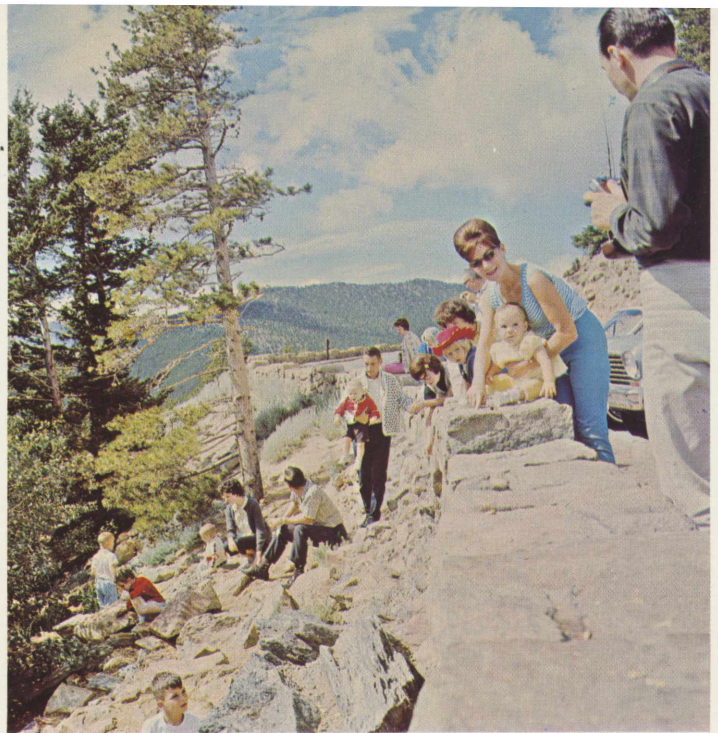
The library in Carter Hall has 178,000 volumes, 750 microfilms and 950 periodicals. The Instructional Material Center, in the library, has more than 1,700 films, 200 filmstrips, and several hundred recordings.

The beautiful 317-acre CSC campus is divided into two parts—Greeley campus with a physical plant of 81 buildings and the 80-acre Mountain Campus near Estes Park amid some of the most spectacular scenery in the Rockies. Still under development, the Mountain Campus is used primarily for field trips.

CSC is in Greeley, Colorado, a city of approximately 32,000. Greeley is on U. S. Highway 85 and 34, fifty miles north of Denver, south of Cheyenne, Wyoming, and east of Estes Park.



Greeley's invigorating summer climate, accented by the seemingly ever-present warm sunshine, is a favorite among outdoor enthusiasts.



Above—Rocky Mountain National Park and its nationally famous Trailridge Road, is a frequent weekend destination of summer students. The park, and various other famous attractions, are within a day's drive from campus.

After School

Mix an outstanding campus activities program, a complete community activities program, eight city parks, two golf courses and some of the most spectacular mountain country in the world. The result: a delightful summer of relaxation and vacation as well as study at Colorado State College. After one summer in Greeley, you'll see why Colorado State College is a favorite among summer school students.

In Greeley, the college-community sponsored programs supervises leisure activities throughout the summer for all school-age youth, plus a number of recreational activities for adults.

Greeley is ideally located for those who love the awesome beauty of the mountains. Almost any kind of scenery is at your beck and call through various "Circle Trips" from Greeley ranging anywhere from 100 to 250 miles. For instance, Rocky Mountain National Park with more than 84 named peaks more than 11,000 feet high is but an hour's drive.

Other popular circle trips include ventures to Central City, the ghost mining town that vividly recalls the era of the Old West; the Cache La Poudre Canyon and Red Feathers Lake area, Red Rocks Theatre, Denver, capitol of the State of Colorado which has a variety of attractions; Colorado Springs, Garden of the Gods, the Royal Gorge, Grand Lake, and many other delightful spots.

Regardless of academic and vacation preferences, Colorado State College summer students look forward to a busy summer filled with academic achievement and summer fun in the Colorado sun.

Back Cover—Beautiful Glenmere Park, just four blocks from campus, is a natural site for a summer picnic. Other attractions for the kids include a playground, small lake, and a variety of hungry geese and ducks.

Below—A summer student takes advantage of a quiet spot on campus, the warm sun, and a cool Colorado breeze to catch up on her studies. Carter Hall, which houses the library, is in the background.



